

BIBLIOGRAPHY

- Adachi, M., & Carlsen, J. C. (1994). Melodic expectancy development in musical children. Paper presented at the *3rd International Conference for Music Perception and Cognition*, Liege, Belgium: European Society for the Cognitive Sciences of Music.
- Allik, J., Dzharfarov, E. N., Houtsma, A. J. M., Ross, J., & Versfeld, N. J. (1989). Pitch motion with random chord sequences. *Perception and Psychophysics*, *46*(6), 513-527.
- Anderson, J. R. (1991). Is human cognition adaptive? *Behavioral and Brain Sciences*, *14*, 471-517.
- Ando, Y., Okano, T., & Takezoe, Y. (1989). The running autocorrelation function of different musical signals relating to preferred temporal parameters of sound fields. *Journal of the Acoustical Society of America*, *86*(2), 644-649.
- Andreasen, F. A. & Geake, J. G. (1995). (in preparation).
- Andrews, M. W., & Dowling, W. J. (1991). The development of perception of interleaved melodies and control of auditory attention. *Music Perception*, *8*(4), 349-368.
- Aschkenasy, J. R., & Odom, R. D. (1982). Classification and perceptual development: exploring issues about integrality and differential sensitivity. *Journal of Experimental Child Psychology*, *34*(3), 435-448.
- Ashman, A. F., & Das, J. P. (1980). Relation between planning and simultaneous-successive processing. *Perceptual and Motor Skills*, *51*, 371-382.
- Asmus, E. P., & Radocy, R. E. (1992). Quantitative Analysis. In R. Colwell (Ed.), *Handbook of Research on Music Teaching and Learning* (pp. 141-183). New York: Schirmer Books.
- Balch, W. R. (1981). The role of symmetry in the good continuation ratings of two-part tonal melodies. *Perception & Psychophysics*, *29*(1), 47-55.
- Bamberger, J. (1982). Growing Up Prodigies: The Midlife Crisis. In D. H. Feldman (Ed.), *Developmental Approaches to Giftedness and Creativity*. (pp. 61-77). San Francisco: Jossey-Bass.
- Bamberger, J. (1991). *The Mind Behind the Musical Ear: How Children Develop Musical Intelligence*. Cambridge, Massachusetts: Harvard University Press.
- Barcellos, A. (1984). The fractal geometry of Mandelbrot. *College Mathematics Journal*, *15*(2), 98-114.
- Barnsley, M. F. (1988). *Fractals Everywhere: A First Course in Deterministic Fractal Geometry*. New York: Academic Press.

- Barnsley, M. F., & Sloan, A. D. (1988). A better way to compress images. *Byte* (January), 215-223.
- Barsz, K. (1988). Auditory pattern perception: The effect of tonal frequency range on the perception of temporal order. *Perception and Psychophysics*, 43, 293-303.
- Bartlett, J. C. (1984). Cognition of Complex Events: Visual Scenes and Music. In W. R. Crozier & A. J. Chapman (Eds.), *Cognitive Processes in the Perception of Art*. (pp. 225-251). Amsterdam: Elsevier Science Publishers.
- Bartlett, J. C., & Dowling, W. J. (1988). Scale structure and similarity of melodies. *Music Perception*, 5(3), 285-314.
- Basar, E. (1990). Chaotic dynamics and resonance phenomena in brain function: progress, perspectives and thoughts. In E. Basar (Ed.), *Chaos in Brain Function* (pp. 1-30). Berlin: Springer-Verlag.
- Beament, J. (1977). The biology of music. *Psychology of Music*, 5(1), 3-18.
- Benjafield, J. G. (1992). *Cognition*. New Jersey: Prentice-Hall Inc.
- Bentley, A. (1966). *Musical Ability in Children and its Measurement*. London: Harrap.
- Berlyne, D. E. (1970). Novelty, complexity and hedonic value. *Perception & Psychophysics*, 8(5A), 279-286.
- Bever, T. G. (1988). A cognitive theory of emotion and aesthetics in music. *Psychomusicology*, 7(2), 165-175.
- Bigand, E. (1990). Abstraction of two forms of underlying structure in a tonal melody. *Psychology of Music*, 18, 45-59.
- Biggs, J. B., & Kirby, J. R. (1980). Differentiation of learning processes within ability groups. *Educational Psychology*, 4, 21-39.
- Billingsley, R., & Rotenberg, K. J. (1982). Children's interval processing in music. *Psychomusicology*, 2(1), 38-43.
- Birbaumer, N., Lutzenberger, W., Rau, H., Mayer-Kress, G., Choi, I., & Braun, C. (1994). *Perception of Music and Dimensional Complexity of Brain Activity*. Technical Report No. CCSR-94-28. Center for Complex Systems Research, University of Illinois at Urbana-Champaign.
- Bock, R. D. (1975). *Multivariate Statistical Methods in Behavioral Research*. New York: McGraw-Hill Book Company.
- Boltz, M. (1989). Perceiving the end: Effects of tonal relationships on melodic completion. *Journal of Experimental Psychology: Human Perception and Performance*, 15(4), 749-761.

- Boltz, M. (1991). Time estimation and attentional perspective. *Perception and Psychophysics*, *49*(5), 422-433.
- Boon, J.-P., Noullez, A., & Mommen, C. (1990). Complex dynamics and musical structure. *Interface*, *19*, 3-14.
- Boon, J. P., & Decroly, O. (1995). Dynamical systems theory for music dynamics. *CHAOS*, (in press).
- Boroda, M. G. (1993). Classification Criteria and the Universals in the Organisation of a Musical Text. In O. Opitz, B. Lausen, & R. Klar (Eds.), *Information and Classification* (pp. 500-509). Berlin: Springer-Verlag.
- Bossomaier, T., Pipitone, J., & Stuart, G. (1993). Neural Dynamics in Biological Information Processing. In D. G. Green & T. Bossomaier (Eds.), *Complex Systems: From Biology to Computation*, Amsterdam: IOS Press.
- Boyd, T. A., & Hooper, S. R. (1993). WISC-R IQ estimates from the Luria-Nebraska neuropsychological battery. *Perceptual and Motor Skills*, *77*, 683-688.
- Boyle, J. D. (1992). Evaluation of Music Ability. In R. Colwell (Ed.), *Handbook of Research on Music Teaching and Learning* (pp. 247-265). New York: Schirmer Books.
- Bray, J. H., & Maxwell, S. E. (1982). Analyzing and interpreting significant MANOVAs. *Review of Educational Research*, *52*(3), 340-367.
- Bregman, A. S. (1994). *Auditory Scene Analysis*. Cambridge, Massachusetts: The MIT Press.
- Brooker, R. (1993). The Predictive Validity of the Australian Test for Advanced Music Studies. In *IXth National Conference Australian Society for Music Education*, (pp. 68-75). Perth: Australian Society for Music Education.
- Brown, G. J., & Cooke, M. (1994). Perceptual grouping of musical sounds. *Journal of New Music Research*, *23*(2), 107-132.
- Brown, H. (1987). Tonal hierarchies and perceptual context: An experimental study of music behavior. *Psychomusicology*, *7*(1), 77-90.
- Brown, H. (1988). The interplay of set content and temporal context in a functional theory of tonality perception. *Music Perception*, *5*(3), 219-250.
- Bryant, E. T., Maruish, M. E., Sawicki, R. F., & Golden, C. J. (1984). Validity of the Luria-Nebraska Neuropsychological Battery. *Journal of Consulting and Clinical Psychology*, *52*(3), 445-448.
- Bryce, J. (1979). *ACER and University of Melbourne Music Evaluation Kit*, Melbourne: Australian Council for Educational Research Limited.

- Bryce, J. (1993). (personal communication). Australian Council for Educational Research, Melbourne.
- Buldyrev, S.V., Goldberger, A. L., Havlin, S., Peng, C-K., & Stanley, H. E. (1994). Fractals in Biology and Medicine: From DNA to Heartbeat. In A. Bunde & S. Havlin (Eds.) *Fractals in Science*. Berlin: Springer-Verlag.
- Bunde, A., & Havlin, S. (1994). A Brief Introduction to Fractal Geometry. In A. Bunde & S. Havlin (Eds.) *Fractals in Science*. Berlin: Springer-Verlag.
- Burgess, A. E. (1990). High level visual decision efficiencies. In C. Blakemore (Ed.), *Vision: coding and efficiency*, (pp. 431-440). Cambridge: Cambridge University Press.
- Burnett, K. F. (1989). Computers for assessment and intervention in psychiatry and psychology. *Current Opinion in Psychiatry*, 2, 780-786.
- Butler, D. (1990). A study of event hierarchies in tonal and post-tonal music. *Psychology of Music*, 18, 4-17.
- Byrkit, D. (1987). *Statistics Today: A Comprehensive Introduction*. Menlo Park, California: The Benjamin/Cummings Publishing Co.
- Calvin, W. H. (1994). The emergence of intelligence. *Scientific American*, 271(4), 78-85.
- Carroll, J. B. (1993). *Human Cognitive Abilities: A Survey of Factor-analytic Studies*. Cambridge: Cambridge University Press.
- Carroll, J. B. (1992). Cognitive abilities: The state of the art. *Psychological Science*, 3(5), 266-270.
- Cazden, N. (1979). Can verbal meanings inhere in fragments of melody? *Psychology of Music*, 7(2), 34-38.
- Clarke, E. F., & Krumhansl, C. L. (1990). Perceiving musical time. *Music Perception*, 7(3), 213-252.
- Cochran, K. F., & Wheatley, G. H. (1982). Cognitive strategies in spatial performance. Paper presented to the American Educational Research Association, New York.
- Cohen, A. J. (1991). Tonality and perception: Musical scales primed by excerpts from *The Well-Tempered Clavier* of J. S. Bach. *Psychological Research*, 53, 305-314.
- Cohen, A. J., Trehub, S. E., & Thorpe, L. A. (1989). Effects of uncertainty on melodic information processing. *Perception and Psychophysics*, 46(1), 18-28.
- Colwell, R. (1970). *The Evaluation of Music Teaching and Learning*. New Jersey: Prentice-Hall.

- Cook, T. D., & Campbell, D. T. (1979). *Quasi-Experimentation: Design and Analysis Issues for Field Settings*. Chicago: Rand McNally.
- Cook, N. (1994). Perception: A Perspective from Music Theory. In R. Aiello (Ed.), *Musical Perceptions* New York: Oxford University Press.
- Cooper, L. A. (1982). Strategies for visual comparison and representation: individual differences. In R. J. Sternberg (Ed.), *Advances in the Psychology of Human Intelligence*, . Hillsdale: Lawrence Erlbaum & Associates.
- Cowart, C. A., & McCallum, R. S. (1988). Multi-trait multi-method investigation of the Simultaneous-Successive-Planning Model. *Journal of Psychoeducational Assessment*, 6, 67-77.
- Crawford, K. P. (1986). Simultaneous and Successive Processing, Executive Control and Social Experience: Individual Differences in Educational Achievement and Problem Solving in Mathematics. Unpublished Doctoral thesis, University of New England.
- Creider, B. H. (1989). Music Learning Theory and the Suzuki Method. In D. L. W. & C. C. Taggart (Eds.), *Readings in Music Learning Theory* (pp. 260-271). Chicago: GIA Publications Inc.
- Crick, F., & Koch, C. (1992). The problem of consciousness. *Scientific American*, 267(3), 110-117.
- Crummer, G. C., Hantz, E. C., Chuang, S. W., Walton, J., & Frisnia, R. D. (1988). Neural basis for music cognition: Initial experimental findings. *Psychomusicology*, 7(2), 117-126.
- Cuddy, L. L. (1991). Melodic patterns and tonal structure: converging evidence. *Psychomusicology*, 10, 107-126.
- Cuddy, L. L., & Uptis, R. (1992). Aural Perception. In R. Colwell (Ed.), *Handbook of Research on Music Teaching and Learning* (pp. 333-343). New York: Schirmer Books.
- Cummins, J., & Das, R. J. (1978). Simultaneous and successive syntheses and linguistic processes. *International Journal of Psychology*, 13, 129-138.
- Dai, H., & Green, D. M. (1992). Auditory intensity perception: Successive versus simultaneous, across-channel discriminations. *Journal of the Acoustical Society of America*, 91(5), 2845-2854.
- Das, J. P. (1973). Structure of cognitive abilities: evidence for simultaneous and successive processing. *Journal of Educational Psychology*, 65(1), 103-108.
- Das, J. P., Kirby, J., & Jarman, R. F. (1975). Simultaneous and successive syntheses: an alternative model for cognitive abilities. *Psychological Bulletin*, 82(1), 87-103.
- Das, J. P., Kirby, J., & Jarman, R. F. (1979). *Simultaneous and Successive Cognitive Processes*. New York: Academic Press.

- Das, J. P., & Heemsbergen, D. B. (1983). Planning as a factor in the assessment of cognitive processes. *Journal of Psychoeducational Assessment*, 1, 1-16.
- Das, J. P., Mensink, D., & Janzen, H. (1990). The K-ABC, coding and planning: An investigation of cognitive processes. *Journal of School Psychology*, 28(1), 1-11.
- Das, J. P., & Molloy, G. N. (1975). Varieties of simultaneous and successive processing in children. *Journal of Educational Psychology*, 67(2), 213-220.
- Das, J. P., Naglieri, J. A., & Kirby, J. R. (1994). *Assessment of Cognitive Processes: The PASS Theory of Intelligence*. Boston: Allyn and Bacon.
- Dash, U. N., & Mahapatra, S. (1989). Development and differentiation of simultaneous, successive and planning processes. *Psychological Studies*, 34, 75-83.
- Davidson, L. (1993). Arts Education: New Ways of Learning. In *IXth National Conference Australian Society for Music Education* (pp. 35-45). Perth: Australian Society for Music Education.
- Davidson, L. (1994). Songsinging by Young and Old: A Developmental Approach to Music. In R. Aiello (Ed.), *Musical Perceptions*. New York: Oxford University Press.
- Davies, J. B. (1994). Seeds of a false consciousness. *The Psychologist*, 7(8), 355-356.
- Davies, J. B., & Yelland, A. (1977). Effects of two training procedures on the production of melodic contour, in short-term memory for tonal sequences. *Psychology of Music*, 5, 3-9.
- de la Motte, H. (1994). La perception de la forme musicale. Paper presented at the *3rd International Conference for Music Perception and Cognition*. Liege, Belgium: European Society for the Cognitive Sciences of Music.
- Delis, D. C., & Kaplan, E. (1983). Hazards of a standardized neuropsychological test with low content validity: Comment on the Luria-Nebraska Neuropsychological Battery. *Journal of Consulting and Clinical Psychology*, 51(3), 396-398.
- Demany, L., & Semal, C. (1988). Dichotic fusion of two tones one octave apart: Evidence for internal octave templates. *Journal of the Acoustical Society of America*, 83(2), 687-695.
- Demorest, S. (1994). (personal communication), University of Washington, Seattle.
- Deutsch, D. (1982). Organisational Processes in Music. In M. Clynes (Ed.), *Music, Mind and Brain: The Neuropsychology of Music*. New York: Plenum Press.
- Deutsch, D. (1988). The semitone paradox. *Music Perception*, 6(2), 115-132.
- Deutsch, D. (1991). Pitch proximity in the groupings of simultaneous tones. *Music Perception*, 9(2), 185-198.

- Devaney, R. L. & Keen, L. (Eds.) (1989). *Chaos and Fractals: The Mathematics Behind the Computer Graphics*. American Mathematical Society.
- DeWitt, L. A., & Crowder, R. G. (1987). Tonal fusion of consonant musical intervals: The oomph in Stumpf. *Perception and Psychophysics*, 41(1), 73-84.
- Dodge, C., & Bahn, C. R. (1986). Musical fractals. *Byte* (June), 185-196.
- Dowling, W. J. (1971). Recognition of inversions of melodies and melodic contours. *Perception and Psychophysics*, 9(3B), 348-349.
- Dowling, W. J. (1978). Scale and contour: Two components of a theory of memory for melodies. *Psychological Review*, 85(4), 341-354.
- Dowling, W. J. (1989). Programming small computers to produce experiments in music cognition. *Psychomusica*, 8(2), 183-190.
- Dowling, W. J. (1990). Expectancy and attention in melody perception. *Psychomusicology*, 9(2), 148-160.
- Dowling, W. J. (1991). Tonal strength and melody recognition after long and short delays. *Perception and Psychophysics*, 50(4), 305-313.
- Dowling, W. J. (1994a). The development of melodic perception and production. Paper presented at the *3rd International Conference for Music Perception and Cognition*. Liege, Belgium: European Society for the Cognitive Sciences of Music.
- Dowling, W. J. (1994b). The time course memory for melodies. Paper presented at the *3rd International Conference for Music Perception and Cognition*. Liege, Belgium: European Society for the Cognitive Sciences of Music.
- Dowling, W. J. (1995a). The Development of Music Perception and Cognition. In D. Deutsch (Ed.), *Psychology of Music* (in press).
- Dowling, W. J. (1995b). Melodic Structure in Perception and Production. In A. Zenatti (Ed.), *La Psychologie de la Musique*. Paris: PUF.
- Dowling, W. J., Kwak, S. Y., & Andrews, M. W. (1995). The time course of recognition of novel melodies. *Perception and Psychophysics*. (in press).
- Edelman, G. (1994). *Bright Air, Brilliant Fire*. Harmondsworth: Penguin Books.
- Eibl-Eibesfeldt, I. (1988). The Biological Foundations of Aesthetics. In I. Rentschler, B. Hertzberger, & D. Epstein (Eds.), *Beauty and the Brain: Biological Aspects of Aesthetics*. Basel: Birkhauser Verlag.
- Elliot, J., Platt, J. R., & Racine, R. J. (1987). Adjustment of successive and simultaneous intervals by musically experienced and inexperienced subjects. *Perception and Psychophysics*, 42(6), 594-598.

- Elliott, A. S. (1990). The social-cognitive complexity of young children's play in selected computer-based learning environments: An exploratory study. Unpublished Doctoral thesis, University of New England.
- Farnsworth, P. R. (1953). A study of the Henver adjective list. Paper presented to the *Esthetics Division of the American Psychological Association*.
- Feder, J. (1988). *Fractals*. New York: Plenum Press.
- Feldman, D. H. (1993). Child prodigies: A distinctive form of giftedness. *Gifted Child Quarterly*, *37*(4), 188-193.
- Field, D. J. (1987). Relations between the statistics of natural images and the response properties of cortical cells. *Journal of the Optical Society of America*, *4*(12), 2379-2394.
- Figgs, L. D. (1980). The law of regression as it pertains to musicality. *Psychology of Music*, *8*(1), 19-24.
- Fischbach, G. D. (1992). Mind and brain. *Scientific American*, *267*(3), 24-33.
- Fiske, H. (1987). Cognition structure and the perception of music. *Bulletin of the Council for Research in Music Education*, *91*, 31-37.
- Fitzgerald, D. F. (1978). *A Model of Simultaneous and Successive Processing as a Basis for Developing Individualised Instruction*. Education Research and Development Committee, University of New England.
- Fitzgerald, D. F. (1990). *Computer Based Assessment and Cognitive Modelling*. Centre for Research on Information Technology in Education, University of New England.
- Fitzgerald, D. F., Fraser, C., & Fitzgerald, R. (1995). (work in progress). Centre for Research on Information Technology in Education, University of New England.
- Freeman, J. (1974). Musical and artistic talent in children. *Psychology of Music*, *2*(1), 5-12.
- Freeman, W. J. (1990). Nonlinear Neural Dynamics in Olfaction as a Model for Cognition. In E. Basar (Ed.), *Chaos in Brain Function* (pp. 63-73). Berlin: Springer-Verlag.
- Freeman, W. J. (1992). Tutorial on neurobiology: From single neurons to brain chaos. *International Journal of Bifurcation and Chaos in Applied Sciences and Engineering*, *2*(3), 451-482.
- Frisina, R. D., Walton, J. P., & Crummer, G. C. (1988). Neural basis for music cognition: Neurophysiological foundations. *Psychomusicology*, *7*(2), 99-107.
- Gardner, H. (1982). *Art, Mind, and Brain*. New York: Basic Books.

- Gardner, H. (1993). *Multiple Intelligences: The Theory in Practice*. New York: Basic Books.
- Gardner, H., Silverman, J., Denes, G., Semenza, C., & Rosenstiel, A. (1977). Sensitivity to musical denotation and connotation in organic patients. *Cortex*, 13, 242-256.
- Gardner, M. (1978). White and brown music, fractal curves and one-over-f fluctuations. *Scientific American*, April, 16-31.
- Geake, J. G. (1991). Fractal Computer Graphics as a Stimulus for the Enhancement of Perceptual and Affective Sensitivity to the Natural Environment. Unpublished Masters thesis, University of New England.
- Geake, J.G. (1992). Fractal computer graphics as a stimulus for the enhancement of perceptual sensitivity to the natural environment. *Australian Journal of Environmental Education*, 8, 1-16.
- Geake, J.G. & Porter, J. (1992). Form in the Natural Environment: Fractal Computer Graphics and Wassily Kandinsky. *Journal of Art & Design Education (U.K.)*, 11(3), 287-302.
- Geake, J.G. (1994). A computer-adaptive operationalised model of information processing as a means of identification of gifted children. *Proceedings of the Fifth National Conference of the Australian Association for Education of the Gifted and Talented*, Perth, April.
- Gibson, D. (1989). An effective computer-assisted protocol for music perception experiments. *Psychomusicology*, 8(2), 191-196.
- Gibson, E. J. (1969). *Principles of Perceptual Learning and Development*. New York: Meredith Corporation.
- Gilden, D., Schmuckler, M., & Clayton, K. (1993). The perception of natural contour. *Psychological Review*, 100(3), 460-478.
- Gleick, J. (1987). *Chaos: Making a New Science*. New York: Viking Penguin.
- Gleick, J., & Porter, E. (1990). *Nature's Chaos*. London: Scribners.
- Godoy, R. I. (1994). Shapes and spaces in musical thought. Paper presented at the *3rd International Conference for Music Perception and Cognition*. Liege, Belgium: European Society for the Cognitive Sciences of Music.
- Golden, C. J. (1987). *LNNB-C Revision Manual*. Lincoln, Nebraska: Western Psychological Services.
- Golden, C. J., Purisch, A. D., & Hammeke, T. A. (1985). *Luria-Nebraska Neuropsychological Battery: Forms I and II*. Lincoln, Nebraska: Western Psychological Services.
- Goldman-Rakic, P. S. (1992). Working memory and the mind. *Scientific American*, 267(3), 62-71.

- Gordon, E. (1971). *The Psychology of Music Teaching*. New Jersey: Prentice-Hall.
- Gordon, E. E. (1979). Developmental music aptitude as measured by the Primary Measures of Musical Audiation. *Psychology of Music*, *7*(1), 42-49.
- Gordon, E. E. (1993). *Learning Sequences in Music*. Chicago: GIA Publications Inc.
- Gorsuch, R. (1988). Exploratory Factor Analysis. In J. N. & R. Cattell (Eds.), *Handbook of Multivariate Experimental Psychology*. New York: Plenum Press.
- Green, K. N. (1977). An Examination of a Model of Individual Differences in Sequential and Simultaneous Processing for the Study of Aptitude-Treatment Interaction. Unpublished Doctoral thesis, University of New England.
- Gregson, R. A. M. (1983). *Time Series in Psychology*. Hillsdale, New Jersey: Lawrence Erlbaum Associates.
- Gregson, R. A. M. (1994). (personal communication). Australian National University.
- Gregson, R. A. M., & Harvey, J. P. (1992). Similarities of low-dimensional chaotic auditory attractor sequences to quasirandom noise. *Perception and Psychophysics*, *52*(3), 267-278.
- Gross, M. U. M. (1993). *Exceptionally Gifted Children*. New York: Routledge.
- Guenther, R. K. (1991). Generic versus specialized information processing. *American Journal of Psychology*, *104*(2), 193-209.
- Haken, H. (1983). Chaos and order in nature. *Springer Series in Synergetics*, *11*, 2-11.
- Haken, H. (1987). Synopsis and Introduction. In H. Haken (Ed.), *Synergetics of the Brain*. Berlin: Springer-Verlag.
- Halpern, A. R., Bartlett, J. C., & Dowling, W. J. (1995). Aging and Expertise in the Recognition of Musical Transpositions. (in preparation).
- Handel, S., & Yoder, D. (1975). The effects of intensity and interval rhythms on the perception of auditory and visual temporal patterns. *Quarterly Journal of Experimental Psychology*, *27*, 111-122.
- Hanna, A. L. (1965). A Statistical Analysis of some Style Elements in the Solo Piano Sonatas of Franz Schubert. Doctoral thesis, Indiana University: UMI.
- Hantz, E. C., & Crummer, G. C. (1988). Neural basis for music cognition: Psychophysical foundations. *Psychomusicology*, *7*(2), 109-115.

- Hantz, E. C., Crummer, G. C., Wayman, J. W., Walton, J. P., & Frisina, R. D. (1992). Effects of musical training and absolute pitch on the neural processing of melodic intervals: A P3 event-related study. *Music Perception*, 10(1), 25-42.
- Hargreaves, D. J. (1986). *The Developmental Psychology of Music*. Cambridge: Cambridge University Press.
- Hassler, M. (1990). Functional cerebral asymmetries and cognitive abilities in musicians, painters and controls. *Brain and Cognition*, 13, 1-17.
- Hassler, M., Birbaumer, N., & Feil, A. (1985). Musical talent and visual-spatial abilities: A longitudinal study. *Psychology of Music*, 13(2), 99-113.
- Hassler, M., Birbaumer, N., & Feil, A. (1987). Musical talent and visual-spatial ability: Onset of puberty. *Psychology of Music*, 15, 141-151.
- Hebb, D. O. (1961). *Organisation of Behavior: A Neuropsychological Theory*. New York: Science Editions.
- Henon, M. (1976). A two-dimensional mapping with a strange attractor. *Communications in Mathematical Physics*, 50, 69-77.
- Hevner, K. (1936). Experimental studies of the elements of expression in music. *American Journal of Psychology*, 48, 246-268.
- Hewlet, W. B., & Selfridge-Field, E. (1991). Fractal approaches to analysis and composition. In W. B. Hewlet & E. Selfridge-Field (Eds.), *Computing in Musicology* (pp. 92-97). Menlo Park: Center for Computer Assisted Research in the Humanities.
- Hochberg, J. (1984). Form Perception: Experiences and Explanations. In P. C. Dodwell & T. Caelli (Eds.), *Figural Synthesis*. Hillsdale, New Jersey: Lawrence Erlbaum Associates.
- Honing, H. (1993). Issues on the representation of time and structure in music. *Contemporary Music Review*, 9, 221-238.
- Horton, A. M., Vaeth, J., & Anilane, J. (1990). Computerized interpretation of the Luria-Nebraska Neuropsychological Battery: A pilot study. *Perceptual and Motor Skills*, 71, 83-86.
- Houtsma, A. J. M., & Smurzynski, J. (1990). Pitch identification and discrimination for complex tones with many harmonics. *Journal of the Acoustical Society of America*, 87(1), 304-310.
- Howe, M. J. (1989). Separate skills or general intelligence: The autonomy of human abilities. *British Journal of Educational Psychology*, 59, 351-360.
- Hsu, K. J. (1993). Fractal Geometry of Music: From Bird Songs to Bach. In A. J. Crilly, R. A. Earnshaw, & H. Jones (Eds.), *Applications of Fractals and Chaos: The Shape of Things* (pp. 21-39). Berlin: Springer-Verlag.

- Hsu, K. J., & Hsu, A. (1991). Self-similarity in music. *Computing in Musicology*, *7*, 98-100.
- Hubbard, T. L., & Stoeckig, K. (1988). Musical imagery: Generation of tones and chords. *Journal of Experimental Psychology: Learning, Memory and Cognition*, *14*(4), 656-667.
- Hunt, D., Randhawa, B., & Fitzgerald, D. (1976). *Verbal and Pictorial Cues, Individual Differences and Auditory Learning*. Information Research Report, Education Resources Centre, University of Saskatchewan.
- Jackendoff, R. (1991). Musical parsing and musical affect. *Music Perception*, *9*(2), 199-230.
- Janata, P., & Petsche, H. (1993). Spectral analysis of the EEG as a tool for evaluating expectancy violations of musical contexts. *Music Perception*, *10*(3), 281-304.
- Janata, P., & Reisberg, D. (1988). Response-time measures as a means of exploring tonal hierarchies. *Music Perception*, *6*(2), 161-172.
- Johnston, I. (1989). *Measured Tones: The Interplay of Physics and Music*. Bristol: Adam Hilger.
- Jones, M. R. (1992). Attending to Musical Events. In M. R. Jones & S. Holleran (Eds.), *Cognitive Bases of Musical Communication*. (pp. 91-109). American Psychological Association.
- Kandel, E. R., & Hawkins, R. D. (1992). The biological basis of learning and individuality. *Scientific American*, *267*(3), 52-60.
- Karma, K. (1979). Musical, spatial and verbal abilities. *Bulletin of the Council for Research in Music Education*, *59*, 50-53.
- Karma, K. (1982). Musical, spatial and verbal abilities: A progress report. Proceedings of the Ninth International Seminar on Research in Music Education, *Psychology of Music*, *10*, 69-71.
- Karma, K. (1985). Components of auditive structuring - Towards a theory of musical aptitude. *Bulletin of the Council for Research in Music Education*, *82*, 1-13.
- Karnes, F. A., & McCallum, R. S. (1983). Evidence for the Luria-Das model of information processing for gifted students: A preliminary investigation. *Educational and Psychological Research*, *3*, 133-137.
- Karras, D., Newlin, D. B., Franzen, M. D., Golden, C. J., Wilkening, G. N., Rothermel, R. D., & Tramontana, M. J. (1987). Development of factor scales for the Luria-Nebraska Neuropsychological Battery-Children's Revision. *Journal of Clinical Child Psychology*, *16*(1), 19-28.
- Kaufman, A., & Kaufman, N. (1983). *The Kaufman Assessment Battery for Children: Interpretive Manual*. Circle Pines, NM: American Guidance Service.

- Kendall, R. A., & Carterette, E. C. (1991). Perceptual scaling of simultaneous wind instrument timbres. *Music Perception*, 8(4), 369-404.
- Kersten, D. (1987). Predictability and redundancy of natural images. *Journal of the Optical Society of America*, 4(12), 2395-2400.
- Kertesz, J., & Vicsek, T. (1994). Self-Affine Interfaces. In A. Bunde & S. Havlin (Eds.), *Fractals in Science*. Berlin: Springer-Verlag.
- Keston, M. J., & Pinto, I. M. (1955). Possible factors influencing musical preference. *The Journal of Genetic Psychology*, 86, 101-113.
- Keeves, J. (1988). Multivariate Analysis. In J. Keeves (Ed.) *Educational Research, Methodology, and Measurement: An International Handbook*. (pp. 700-705). Oxford: Pergamon Press.
- Kimura, D. (1992). Sex differences in the brain. *Scientific American*, 267(3), 80-86.
- Kirby, J. R., & Das, J. P. (1990). A cognitive approach to intelligence: Attention, coding and planning. *Canadian Psychology*, 31(4), 320-333.
- Klich, L. Z. (1983). A Cross-Cultural Examination of Cognitive Functions Based on Luria's Neuropsychological Theory of Cerebral Organisation. Unpublished Doctoral thesis, University of New England.
- Klich, L. Z., & Davidson, G. R. (1984). Toward a Recognition of Australian Aboriginal Competence in Cognitive Functions. In J. R. Kirby (Ed.), *Cognitive Strategies and Educational Performance*. (pp. 155-202). Orlando, Florida: Academic Press.
- Klimontovich, Y. L., & Boon, J. P. (1987). *European Physical Letters*, 3, 395-399.
- Knill, D. C., Field, D., & Kersten, D. (1990). Human discrimination of fractal images. *Journal of the Optical Society of America*, 7(6), 1113-1123.
- Krumhansl, C. L. (1992). Internal Representations for Music Perception and Performance. In M. R. Jones & S. Holleran (Eds.), *Cognitive Bases of Musical Communication*. (pp. 197-211). American Psychological Association.
- Krumhansl, C. L., Sandell, G. J., & Sergeant, D. C. (1987). The perception of tone hierarchies and mirror forms in twelve-tone serial music. *Music Perception*, 5(1), 31-78.
- Landini, G. (1992). Fractal music: the 1/f algorithm. *Fractal Report*, 4(20), 14-17.
- Landini, G. (1994a). (personal communication). University of Birmingham, UK.
- Landini, G. (1994b). Implementing a 1/f noise algorithm. *AMYGDALA*, 33-34, 11-13.

- Leasak, J., Hunt, D., & Randhawa, B. S. (1982). Cognitive processing, intervention and achievement. *The Alberta Journal of Educational Research*, 28(3), 257-266.
- LeDoux, J. E. (1994). Emotion, memory and the brain. *Scientific American*, 270(6), 32-39.
- Leman, M. (1992). The theory of tone semantics: Concept, foundation, and application. *Minds and Machines*, 2, 345-363.
- Leman, M. (1994a). Schema-based tone center recognition of musical signals. *Journal of New Music Research*, 23, 169-204.
- Leman, M. (1994b). Signals, images, schemata and mental representations. Paper presented at the *3rd International Conference for Music Perception and Cognition*. Liege, Belgium: European Society for the Cognitive Sciences of Music.
- Lerdahl, F. (1988). Tonal pitch space. *Music Perception*, 5(3), 315-350.
- Lewin, R. (1991). The fractal structure of music. *New Scientist* (May 4), 15.
- Licklider, J. C. R. (1951). Basic Correlates of the Auditory System. In S. S. Stevens (Ed.), *Handbook of Experimental Psychology*. New York: John Wiley & Sons Inc.
- Long, P. A. (1977). Relationship between pitch memory in short melodies and selected factors. *Journal of Research in Music Education*, 25, 272-282.
- Longstreth, L. E. (1986). The real and the unreal: A reply to Jensen and Vernon. *Intelligence*, 10, 181-191.
- Lufti, R. A. (1990). Informational processing of complex sound: II. Cross-dimensional analysis. *Journal of the Acoustical Society of America*, 87(5), 2141-2148.
- Luria, A. R. (1966a). *Higher Cortical Functions in Man*. New York: Basic Books.
- Luria, A. R. (1966b). *Human Brain and Psychological Processes*. New York: Harper & Row.
- Luria, A. R. (1970). The functional organisation of the brain. *Scientific American*, 222(3), 66-78.
- Luria, A. R. (1973). *The Working Brain: An Introduction to Neuropsychology*. New York: Basic Books.
- Luria, A. R. (1975). *The Man with a Shattered World*. Harmondsworth: Penguin.
- Luria, A. R. (1982). *Language and Cognition*. New York: John Wiley & Sons.
- Madsen, C. K., Byrnes, S. R., Capperella-Sheldon, D. A., & Brittin, R. V. (1993). Aesthetic responses to music: Musicians versus nonmusicians. *Journal of Music Therapy*, 30(3), 174-191.

- Mainzer, K. (1994). *Thinking in Complexity: The Complex Dynamics of Matter, Mind and Mandkind*. Berlin: Springer-Verlag.
- Mandelbrot, B. B. (1983). *The Fractal Geometry of Nature* (2nd ed.). New York: W. H. Freeman.
- Mandelbrot, B. B. (1990). Fractals - a geometry of nature. *New Scientist* (September), 22-27.
- Mandelbrot, B. B. (1993). A Fractal's Lacunarity, and How it can be Tuned and Measured. In T. F. Nonnenmacher, G. A. Losa, & E.R. Weibel (Ed.), *Fractals in Biology and Medicine*. Ascona, Switzerland: Birkhauser Verlag.
- Marsden, A. A. (1987). A study of cognitive demands in listening to Mozart's Quintet for Piano and Wind Instruments, K.452. *Psychology of Music*, 15, 30-57.
- McAdams, S. (1984). The Auditory Image: A Metaphor for Musical and psychological Research on Auditory Organisation. In W. R. Crozier & A. J. Chapman (Eds.), *Cognitive Processes in the Perception of Art*. (pp. 289-323). Amsterdam: Elsevier Science Publishers.
- McAdams, S. (1987). Music: A science of the mind? *Contemporary Music Review*, 2, 1-61.
- McCallum, R. S., Merritt, F. M., Dickson, A. L., Oehler-Stinnett, J., & Spencer, T. R. (1988). Planning ability across ranges of intellectual ability: An examination of the Luria-Das information processing model. *Journal of School Psychology*, 26, 405-411.
- McCardell, A. (1993). (personal communication). University of New England.
- McMullen, P. T. (1974). Influence of number of different pitches and melodic redundancy on preference responses. *Journal of Research in Music Education*, 22, 198-204.
- McMullen, P. T., & Arnold, M. J. (1976). Preference and interest as functions of distributional redundancy in rhythmic sequences. *Journal of Research in Music Education*, 24, 22-31.
- McPherson, G. E. (1993). Factors and Abilities Influencing the Development of Visual, Aural and Creative Performance Skills in Music and Their Educational Implications. Doctoral thesis, University of Sydney: UMI.
- McPherson, G. E. (1995). Giftedness and talent in music. *Journal of Aesthetic Education*, (in press).
- Meyer, L. B. (1970). *Music, The Arts, and Ideas: Patterns and Predictions in Twentieth-Century Culture* (3rd ed.). Chicago: University of Chicago Press.
- Miller, I. (1982). Hurssel's account of our temporal awareness. In H. Dreyfus (Ed.), *Hurssel, Intentionality, and Cognitive Science*. Cambridge, Massachusetts: The MIT Press.

- Minsky, M. (1981). Music, mind and meaning. *Computer Music Journal*, 5(3), 28-44.
- Minsky, M. (1988). *The Society of Mind*. New York: Simon & Schuster.
- Mitroo, J. B., Herman, N., & Badler, N. I. (1979). Movies from music: Visualising musical compositions. *Computer Graphics*, 13, 218-225.
- Miyazaki, K. (1993). Absolute pitch as an inability: Identification of musical intervals in a tonal context. *Music Perception*, 11(1), 55-72.
- Monahan, C. B., Kendall, R. A., & Carterette, E. C. (1987). The effect of melodic and temporal contour on recognition memory for pitch change. *Perception and Psychophysics*, 41(6), 576-600.
- Morgan, A. L. R., & Brandt, J. F. (1989). An auditory Stroop effect for pitch, loudness and time. *Brain and Language*, 36, 592-603.
- Naglieri, J. A. (1989). A cognitive processing theory for the measurement of intelligence. *Educational Psychologist*, 24(2), 185-206.
- Naglieri, J. A., & Das, J. P. (1988). Planning-arousal-simultaneous-successive (PASS): A model for assessment. *Journal of School Psychology*, 26, 35-48.
- Naglieri, J. A., & Das, J. P. (1990). Some comments on testing Luria's model: A response to Cowart and McCallum. *Journal of Psychoeducational Assessment*, 8, 165-171.
- Naglieri, J. A., Das, J. P., & Jarman, R. F. (1990). Planning, attention, simultaneous and successive cognitive processes as a model for assessment. *School Psychology Review*, 19(4), 423-442.
- Narmour, E. (1990). *The Analysis and Cognition of Basic Melodic Structures*. Chicago: University of Chicago Press.
- Nettheim, N. (1992). On the spectral analysis of melody. *Interface*, 21, 135-148.
- Nonnenmacher, T. F. (1993). Spatial and Temporal Fractal Patterns in Cell and Molecular Biology. In T. F. Nonnenmacher, G. A. Losa, & E.R. Weibel (Ed.), *Fractals in Biology and Medicine*. Ascona Switzerland: Birkhauser Verlag.
- Olson, H. F., & Belar, H. (1961). Aid to music composition employing a random probability system. *The Journal of the Acoustical Society of America*, 33(9), 1163-1170.
- Osgood, C. E., Suci, G. J., & Tannenbaum, P. H. (1957). *The Measurement of Meaning*. Urbana: University of Illinois Press.
- Paivio, A. (1975). Perceptual comparisons through the mind's eye. *Memory and Cognition*, 3(6), 635-647.

- Palmer, S. E. (1977). Hierarchical structure in perceptual representation. *Cognitive Psychology*, 9, 441-171.
- Parker, O. G. (1978). The relationship of musical ability, intelligence and socioeconomic status to aesthetic sensitivity. *Psychology of Music*, 6(2), 30-35.
- Parmcutt, R. (1989). *Harmony: A Psychoacoustical Approach*. New York: Springer-Verlag.
- Patterson, R. D. (1990). The tone height of multiharmonic sounds. *Music Perception*, 8(2), 203-214.
- Pennycook, B. W. (1985). Computer-music interfaces: A survey. *Computing Surveys*, 17(2), 267-289.
- Pentland, A. P. (1984). Fractal-based description of natural scenes. *Transactions on Pattern Analysis and Machine Intelligence*, PAM-6(6), 661-674.
- Pickover, C. A. (1986). Representation of melody patterns using topographic spectral distribution functions. *Computer Music Journal*, 10(3), 72-78.
- Pickover, C. A., & Khorasani, E. (1986). Fractal characterization of speech waveform graphs. *Computers and Graphics*, 10(1), 51-61.
- Peitgen, H. O., & Richter, P. H. (1986). *The Beauty of Fractals: Images of Complex Dynamical Systems*. Berlin: Springer-Verlag.
- Peitgen, H. O., & Saupe, D. (Ed.). (1988). *The Science of Fractal Images*. Berlin: Springer-Verlag.
- Pinkerton, R. C. (1956). Information theory and melody. *Scientific American*, 194, 77-86.
- Platt, J. R., & Racine, R. J. (1990). Perceived pitch class of isolated musical triads. *Journal of Experimental Psychology: Human Perception and Performance*, 16(2), 415-428.
- Pogonowski, L. (1989). Metacognition: A Dimension of Musical Thinking. In E. Boardman (Ed.), *Dimensions of Musical Thinking* (pp. 9-19). Reston, Virginia: Music Educators National Conference.
- Pont, G. (1990). Geography and human song. *New Scientist* (January 20), 56-59.
- Posner, M. I., & Petersen, S. E. (1990). The attention system of the human brain. *Annual Review of Neuroscience*, 13, 25-42.
- Pressing, J. (1983). Cognitive isomorphisms between pitch and rhythm in world musics: West Africa, the Balkans and Western tonality. *Studies in Music*, 17, 38-61.
- Pressing, J. (1988). Nonlinear maps as generators of musical design. *Computer Music Journal*, 12(2), 35-45.

- Pribram, K. H. (1982). Brain Mechanism in Music: Prolegomena for a Theory of the Meaning of Meaning. In M. Clynes (Ed.), *Music, Mind and Brain: The Neuropsychology of Music*. New York: Plenum Press.
- Radford, J. (1994). Variations on a musical theme. *The Psychologist*, 7(8), 359-360.
- Radocy, R. E., & Boyle, J. D. (1988). *Psychological Foundations of Musical Behavior* (Second Edition). Springfield Illinois: Charles C Thomas.
- Rakowski, A. (1990). Intonation variants of musical intervals in isolation and in musical contexts. *Psychology of Music*, 18, 60-72.
- Ransley, W. K. (1981) The Development of a Psychometric Model of Information Processing in Young Children Based on Luria's Theory of Brain Functioning. Unpublished Doctoral thesis, University of New England.
- Rensick, L. P. (1976). *The Nature of Intelligence*. New Jersey: Lawrence Elbaum & Associates.
- Roads, C. (1985). Research in music and artificial intelligence. *Computing Surveys*, 17(2), 163-190.
- Rose, S. (1993). *The Making of Memory*. Toronto: Bantam Books.
- Ruelle, D. (1990). Chaos in the Soft Sciences. In G. Brown & A. Opie (Ed.), *Chaos in Australia*. University of NSW, Sydney: World Scientific.
- Schmidt, C. P., & Lewis, B. E. (1987). Field-dependence/independence, movement-based instruction and Fourth Graders' achievement in selected musical tasks. *Psychology of Music*, 15, 117-127.
- Schmuckler, M. A. (1989). Expectation in music: Investigation of melodic and harmonic processes. *Music Perception*, 7(2), 109-150.
- Schmuckler, M. A. (1990). The performance of global expectations. *Psychomusicology*, 9(2), 122-147.
- Schmuckler, M. A. (1994). (personal communication). University of Toronto, Ontario.
- Schmuckler, M. A., & Gilden, D. L. (1993). Auditory perception of fractal contours. *Journal of Experimental Psychology: Human Perception and Performance*, 19(3), 641-660.
- Schofield, N., & Ashman, A. (1987). The cognitive processing of gifted, average, and low-average ability students. *British Journal of Educational Psychology*, 57, 9-20.
- Schroeder, M. (1991). *Fractals, Chaos, Power Laws: Minutes from an Infinite Paradise*. New York: W. H. Freeman & Co.

- Serafine, M. L. (1988). *Music as Cognition: The Development of Thought in Sound*. New York: Columbia University Press.
- Sergeant, D., & Thatcher, G. (1974). Intelligence, social status and musical abilities. *Psychology of Music*, 2(2), 32-57.
- Sergeant, D., & Boyle, J. D. (1980). Contextual influences on pitch judgement. *Psychology of Music*, 8, 3-15.
- Shaw, R. (1983a). Modeling chaotic systems. *Springer Series in Synergetics*, 11, 218-231.
- Shaw, R. (1983b). Perspective III: Measuring Information. In E. Reed, P. N. Kugler, & R. E. Shaw (Eds.), *Work Group on Biology and Physics* (pp. 327-345). American Psychological Association.
- Shuter-Dyson, R., & Gabriel, C. (1981). *The Psychology of Musical Ability* (2nd ed.). London: Methuen.
- Shuter, R. (1968). *The Psychology of Musical Ability*. London: Methuen & Co.
- Skarda, C. A., & Freeman, W. J. (1987). How brains make chaos in order to make sense of the world. *Behavioural and Brain Sciences*, 10(1), 161-195.
- Sloboda, J. (1991). Musical Expertise. In K. A. Ericsson & J. Smith (Eds.), *Toward a general theory of expertise* (pp. 153-171). Cambridge: Cambridge University Press.
- Sloboda, J. A., Davidson, J. W., & Howe, M. J. A. (1994a). Is everyone musical? *The Psychologist*, 7(8), 349-354.
- Sloboda, J. A., Davidson, J. W., & Howe, M. J. A. (1994b). Musicians: Experts not geniuses. *The Psychologist*, 7(8), 363-364.
- Smoliar, S. W., & Mikulska, M. (1994). The problem of cognitive opacity: Who cares if you can hear the series? Paper presented at the *3rd International Conference for Music Perception and Cognition*. Liege, Belgium: European Society for the Cognitive Sciences of Music.
- Snart, F., Das, J. P., & Mensink, D. (1988). Reading disabled children with above-average IQ: A comparative examination of cognitive processing. *Journal of Special Education*, 22, 344-356.
- Sorkin, R. D. (1990). Perception on temporal patterns defined by tonal sequences. *Journal of the Acoustical Society of America*, 87(4), 1695-1701.
- Spiers, P. A. (1981). Have they come to praise Luria or to bury him?: The Luria-Nebraska Neuropsychological Battery controversy. *Journal of Consulting and Clinical Psychology*, 49(3), 331-341.

- Spyridis, H., & Roumeliotis, E. (1983). Fourier analysis and information theory on a musical composition. *Acoustica*, 52, 255-256.
- Stevens, J. (1986). *Applied Multivariate Statistics for the Social Sciences*. Hillsdale, New Jersey: Lawrence Erlbaum Associates.
- Strong, A. D. (1992). The relationship between hemispheric laterality and perception of musical and verbal stimuli in normal and learning disabled subjects. *Psychology of Music*, 20, 138-153.
- Storr, A. (1992). *Music and the Mind*. Glasgow: Harper Collins.
- Stuki, D. J., & Pollack, J. B. (1992). Fractal (reconstructive analogue) memory. *14th Annual Conference of the Cognitive Science Society*, Bloomington, USA.
- Swanwick, K. (1988). *Music, Mind, and Education*. London: Routledge.
- Tabachnick, B., & Fidell, L. (1983). *Using Multivariate Statistics*. New York: Harper & Row.
- Taylor, S. (1973). Musical development of children aged seven to eleven. *Psychology of Music*, 1(1), 44-49.
- Terhardt, E. (1991). Music perception and sensory information acquisition: Relationships and low-level analogies. *Music Perception*, 8(3), 217-240.
- Tervaniemi, M., Alho, K., Paavilainen, P., Sams, M., & Naatanen, R. (1993). Absolute pitch and event-related brain potentials. *Music Perception*, 10(3), 305-316.
- Thomas, J. (1991). Fractals in algorithmic composition. *Computing in Musicology*, 7, 100-101.
- Tong, H. (1980). A View on Time Series Model Building. In O. D. Anderson (Ed.), *Time Series*. Amsterdam: North-Holland Publishing Company.
- Torff, B., & Winner, E. (1994). Don't throw out the baby with the bath water. *The Psychologist*, 7(8), 361-362.
- Trehub, S. E. (1994). Developmental perspectives on music perception. Paper presented at the *3rd International Conference for Music Perception and Cognition*. Liege, Belgium: European Society for the Cognitive Sciences of Music.
- Try, K. M. (1984). Computer Managed Instruction and Individualized Learning in Junior High School Mathematics. Unpublished Masters thesis, University of New England.
- Tsuzaki, M. (1991). Effects of the preceding scale on melodic interval judgement in terms of equality and size. *Music Perception*, 9(1), 47-70.
- Tucker, L. R. (1955). Determination of parameters of a functional relation by factor analysis. *Psychometrika*, 11, 19-23.

- Tulloch, M. I. (1981). Individual Differences in Cognitive Processing and Their Significance for the Development of Number Concepts and the Utilization of Mathematical Apparatus. Unpublished Doctoral thesis, University of New England.
- Turner, G. R. (1992). Production of $1/f$ music series. *Fractal Report*, 4(22), 16-20.
- Umemoto, T. (1990). The psychological structure of music. *Music Perception*, 8(2), 115-128.
- Unyk, A. M. (1990). An information processing analysis of expectancy in music. *Psychomusica*, 9(2), 229-240.
- Vannieuwkirk, R. R., & Galbraith, G. G. (1985). The relationship of age to performance on the Luria-Nebraska Neuropsychological Battery. *Journal of Clinical Psychology*, 41, 527-532.
- Vernon, P. A., & Mori, M. (1992). Intelligence, reaction times, and peripheral nerve conduction velocity. *Intelligence*, 16, 273-288.
- Vernon, P. A., Nador, S., & Kantor, L. (1985). Reaction times and speed-of-processing: Their relationship to timed and untimed measures of intelligence. *Intelligence*, 9, 357-374.
- Vernon, P. E., Ryba, K. A., & Lang, R. J. (1978). Simultaneous and successive processing: An attempt at replication. *Canadian Journal of Behavioral Science*, 10(1), 1-14.
- Voss, R. F. (1975). $1/f$ Noise: Diffuse Systems and Music. Doctoral thesis, University of California, Berkley: UMI.
- Voss, R. F. (1985). Random Fractal Forgeries. In R. A. Earnshaw (Ed.), *Fundamental Algorithms for Computer Graphics*. Berlin: Springer-Verlag.
- Voss, R. F. (1988). Fractals in Nature: From Characterisation to Simulation. In H-O Peitgen & D. Saupe (Eds.), *The Science of Fractal Images*. New York: Springer-Verlag.
- Voss, R. F., & Clarke, J. (1975). $1/f$ noise in music and speech. *Nature*, 258 (November 27), 317-318.
- Voss, R. F., & Clarke, J. (1978). " $1/f$ noise" in music: Music from $1/f$ noise. *Journal of the Acoustical Society of America*, 63(1), 258-263.
- Waber, D. P., Carlson, D., Mann, M., Merola, J., & Moylan, P. (1984). SES-related aspects of neuropsychological performance. *Child Development*, 55, 1878-1886.
- Waldrop, M. M. (1992). *Complexity*. London: Viking.
- Walters, D. L. (1989). Audiation: The Term and the Process. In D. L. W. & C. C. Taggart (Eds.), *Readings in Music Learning Theory* (pp. 3-11). Chicago: GIA Publications Inc.

- Walton, J. E. (1983). Sequential and Simultaneous Information Processing Abilities and Their Interaction with Instructional Treatments in Senior High School Mathematics. Unpublished Doctoral thesis, University of New England.
- Wannier, G. H. (1966). *Statistical Physics*. New York: John Wiley & Sons.
- Warren, R. M., & Bashford, J. A. (1993). When acoustic sequences are not perceptual sequences: The global perception of auditory patterns. *Perception and Psychophysics*, *54*(1), 121-126.
- Warren, R. M., Gardner, D. A., Brubaker, B. S., & Bashford, J. A. (1991). Melodic and nonmelodic sequences of tones: Effects of duration on perception. *Music Perception*, *8*(3), 277-290.
- Watters, J. (1993). Cognitive style and scientific process skills in 10-year-old children. Paper presented at the *24th Australasian Science Education Research Association Conference*, Southern Cross University, Lismore.
- Webster, P. R. (1989). Composition software and issues surrounding its use in research settings with children. *Psychomusicology*, *8*(2), 163-169.
- Webster, P., & Richardson, C. (1994). Asking children to think about music. *Research Studies in Music Education*, *1*(2), 8-14.
- West, B., Cross, I., & Howell, P. (1987). Modelling music as input-output and as process. *Psychology of Music and Music Education*, *15*(1), 7-29.
- West, R. J., & Fryer, R. (1990). Ratings of suitability of probe tones as tonics after random orderings of notes of the diatonic scale. *Music Perception*, *7*(3), 253-258.
- Westhead, M. D., & Smaill, A. (1993). Automatic Characterisation of Musical Style. In M. Smith, A. Smaill, & G. A. Wiggins (Ed.), *Music Education: An Artificial Intelligence Approach*. Edinburgh: Springer-Verlag.
- Whellams, F. S. (1973). Has musicality a structure? *Psychology of Music*, *1*(1), 7-9.
- Wiles, J., Latimer, C., & Stevens, C. (1994). *Collected Papers from a Symposium on Connectionist Models and Psychology*. Technical Report No. 289, University of Queensland.
- Willis, W. G. (1989). Neurological models of cognitive processing. *Learning and Individual Differences*, *1*(4), 371-383.
- Wing, H. (1970). *Tests of Musical Ability and Appreciation* (2nd ed.). Cambridge: Cambridge University Press.
- Winner, E., Rosenblatt, E., Windmueller, G., Davidson, L., & Gardner, H. (1986). Children's perception of 'aesthetic' properties of the arts: Domain-specific or pan-artistic? *British Journal of Developmental Psychology*, *4*, 149-160.

- Wolfe, D. E., & Hom, C. (1993). Use of melodies as structural prompts for learning and retention of sequential verbal information by preschool students. *Journal of Music Therapy*, 30(2), 100-118.
- Woodley, C. E. (1993). Cognitive Abilities and Instructional Treatments in a Reasoning Unit for Senior Primary School: A Study of Aptitude Treatment Interaction. Unpublished Doctoral thesis, University of New England.
- Woodrow, H. (1951). Time Perception. In S. S. Stevens (Ed.), *Handbook of Experimental Psychology*. New York: John Wiley & Sons Inc.
- Wuthrich, C. E., & Tunks, T. W. (1989). The influence of presentation time asynchrony on music interval perception. *Psychomusicology*, 8(1), 31-46.

APPENDIX A

MUSIC EVALUATION KIT (MEK)

© The Australian Council For Educational Research Limited

Answer sheets for:

Part I: Pitch Discrimination

Part V: Pattern Recognition

APPENDIX B**PITCH CONTOUR INVERSION TEST**

Instructions

Answer sheet

Scores of the fifteen probe phrases

*Pitch Contour Inversion Test*TAPED INSTRUCTIONS FOR SUBJECTS

In this activity you have to try and recognise a short piece of music which is upside down.

What is upside down music? Here is an example. Listen to this short piece.

[example 1: five tone 'hill' contour]

Listen to it again.

[example 1]

Now listen to the piece played upside down.

[example 2: five tone 'valley' contour]

Listen to the original piece again. Can you see its shape? Up then down.

[example 1]

Listen to it upside down again. The shape goes the opposite way - down then up.

[example 2]

Now look at your answer sheet.

For each piece of music you have to choose the upside down piece out of four choices:

a b c d.

One choice will be the piece right way up.

One choice will be the piece played higher or lower.

One choice will be the piece played backwards.

One choice will be the piece played upside down.

The order will be mixed up.

Here are examples of these four choices.

Here is another piece.

[example 3: six tones ascending from C3]

Here it is again; imagine the shape.

[example 3]

Now listen to it upside down.

[example 4: six tone descending from C3]

Listen to examples of the other choices. The piece played lower.

[example 5: six tones ascending from C2]

The piece played backwards.

[example 6: six tones descending from A3]

And once again, the piece played upside down.

[example 4]

Here is a practice example to mark on your answer sheet at the top.
Put a ring around which you think is the piece played upside down.
Listen to the piece.

[example 7: ten tones 'valley']

Here it is again.

[example 7]

Which of the next four pieces is that piece played upside down?

Piece a?

[example 8: transposition up 8ve]

Piece b?

[example 7]

Piece c?

[example 9: inversion]

Piece a?

[example 10: retrograde]

The correct answer is 'c'.

Any questions?

Now for the real test.

Number one.

(same format as practice example)

...

Number fifteen.

*Pitch Contour Inversion Test***Answer Sheet**

For each of the 15 pieces of music, draw a ring around which choice, a, b, c or d, you think is the piece of music played upside down.

Practice example

A. a b c d

1. a b c d

2. a b c d

3. a b c d

4. a b c d

5. a b c d

6. a b c d

7. a b c d

8. a b c d

9. a b c d

10. a b c d

11. a b c d

12. a b c d

13. a b c d

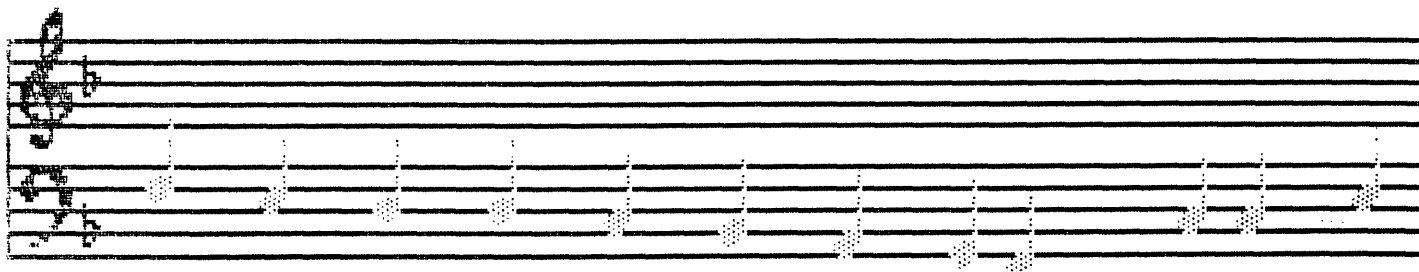
14. a b c d

15. a b c d

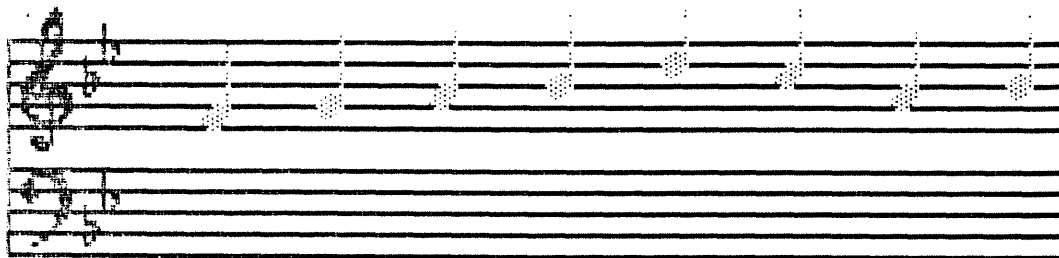
Pitch Contour Inversion Test

Probe phrases for items 1 - 15

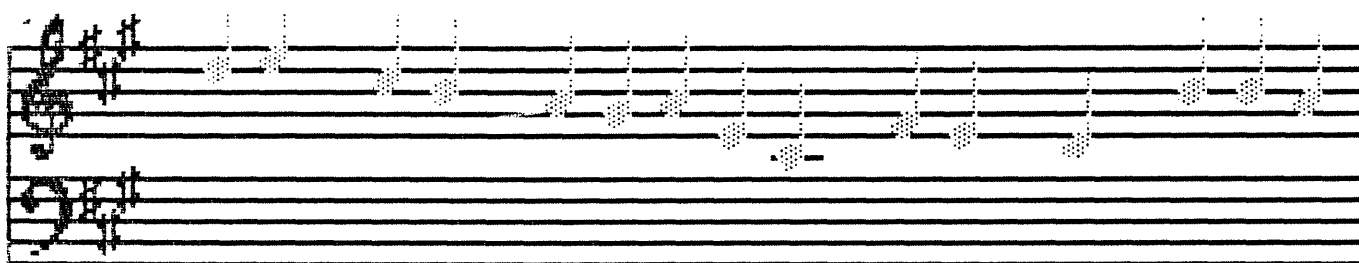
1.



2.



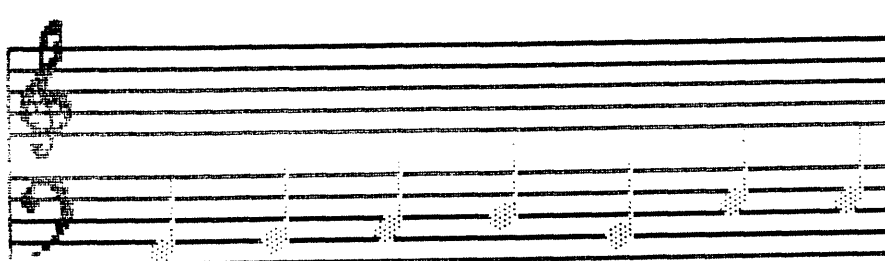
3.



4.



5.



6.

7.

8.

9.

10.

11.

Musical notation for exercise 11, consisting of two staves (treble and bass clef). The key signature is one flat (Bb) and the time signature is 2/4. The melody in the treble clef starts on G4 and moves stepwise up to D5. The bass clef accompaniment starts on G2 and moves stepwise up to D3.

12.

Musical notation for exercise 12, consisting of two staves (treble and bass clef). The key signature is one flat (Bb) and the time signature is 2/4. The melody in the treble clef starts on G4 and moves stepwise up to D5. The bass clef accompaniment starts on G2 and moves stepwise up to D3.

13.

Musical notation for exercise 13, consisting of two staves (treble and bass clef). The key signature is one flat (Bb) and the time signature is 2/4. The melody in the treble clef starts on G4 and moves stepwise up to D5. The bass clef accompaniment starts on G2 and moves stepwise up to D3.

14.

Musical notation for exercise 14, consisting of two staves (treble and bass clef). The key signature is one flat (Bb) and the time signature is 2/4. The melody in the treble clef starts on G4 and moves stepwise up to D5. The bass clef accompaniment starts on G2 and moves stepwise up to D3.

15.

Musical notation for exercise 15, consisting of two staves (treble and bass clef). The key signature is one flat (Bb) and the time signature is 2/4. The melody in the treble clef starts on G4 and moves stepwise up to D5. The bass clef accompaniment starts on G2 and moves stepwise up to D3.

Pitch Contour Inversion Test

Probe phrases for items 1 - 15

1.

Musical notation for item 1, consisting of a single staff with a treble clef and a key signature of one flat (B-flat). The melody is written in quarter notes, starting on G4 and ending on G4.

2.

Musical notation for item 2, consisting of two staves with a treble clef and a key signature of one flat (B-flat). The melody is written in quarter notes, starting on G4 and ending on G4.

3.

Musical notation for item 3, consisting of two staves with a treble clef and a key signature of one flat (B-flat). The melody is written in quarter notes, starting on G4 and ending on G4.

4.

Musical notation for item 4, consisting of two staves with a treble clef and a key signature of one flat (B-flat). The melody is written in quarter notes, starting on G4 and ending on G4.

5.

Musical notation for item 5, consisting of two staves with a treble clef and a key signature of one flat (B-flat). The melody is written in quarter notes, starting on G4 and ending on G4.

