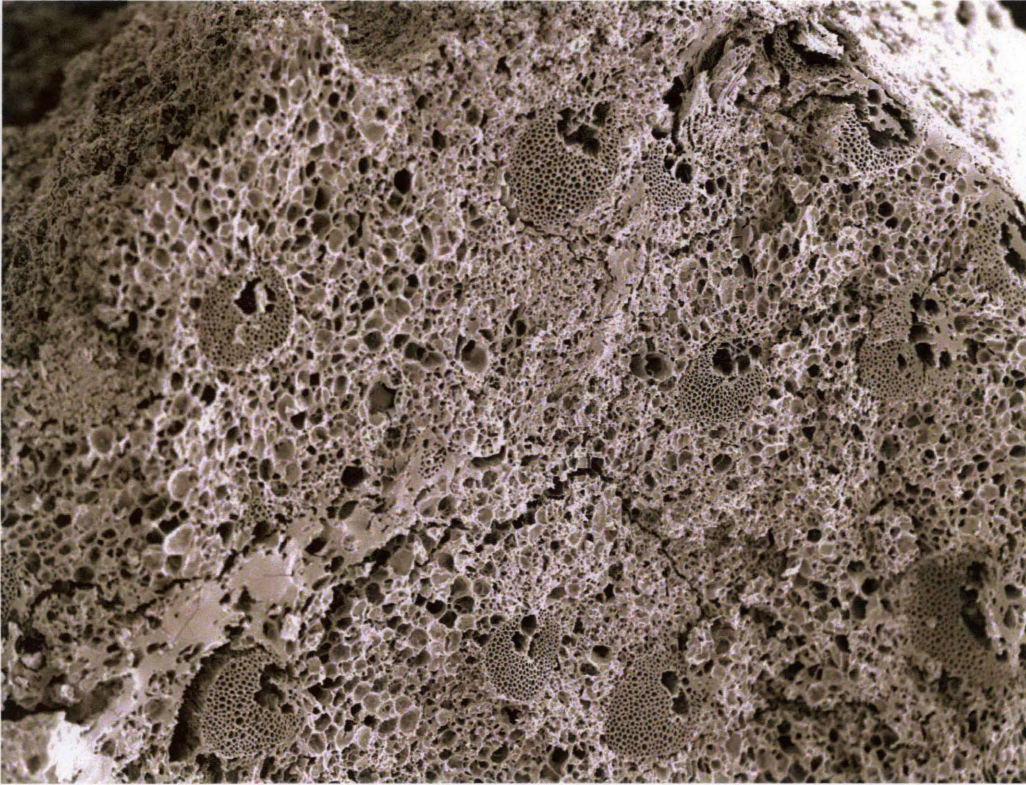
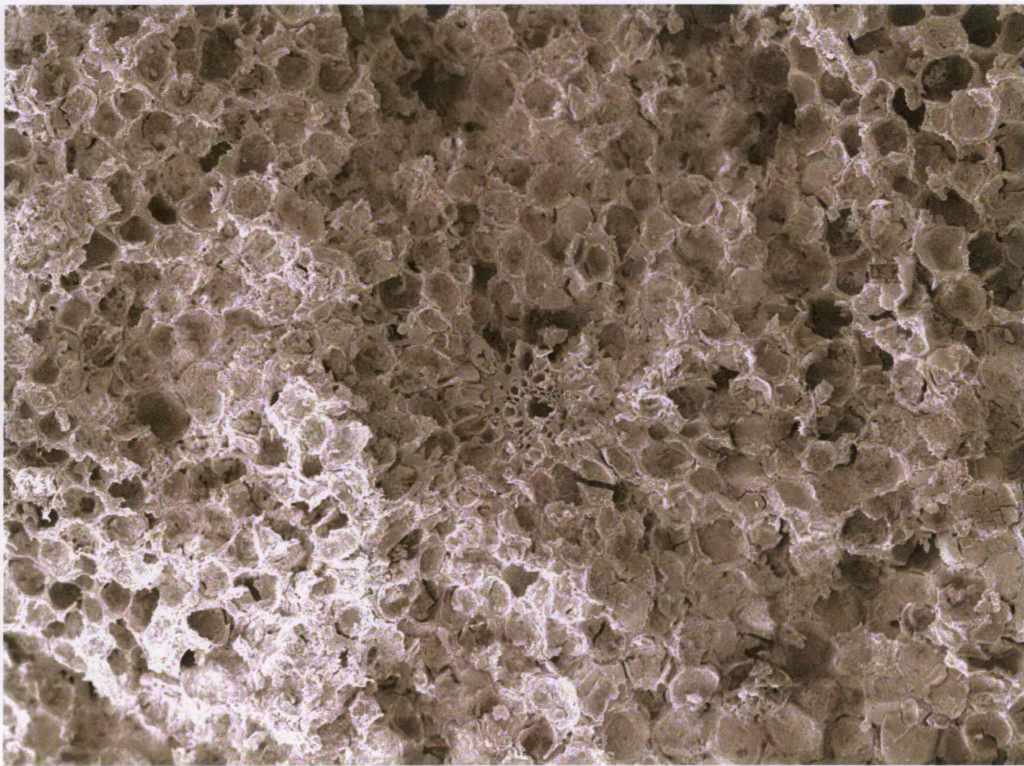


Appendix 3 Examples of SEM Pictures and Notes from B.Gott

S1A - Parenchyma with fibre bundles and monocot vascular bundles enclosed in heavy fibres. Consistent with *Typha* rhizome or flowering stem



S2C - Consistent with *Bolboschoenus* sp.?

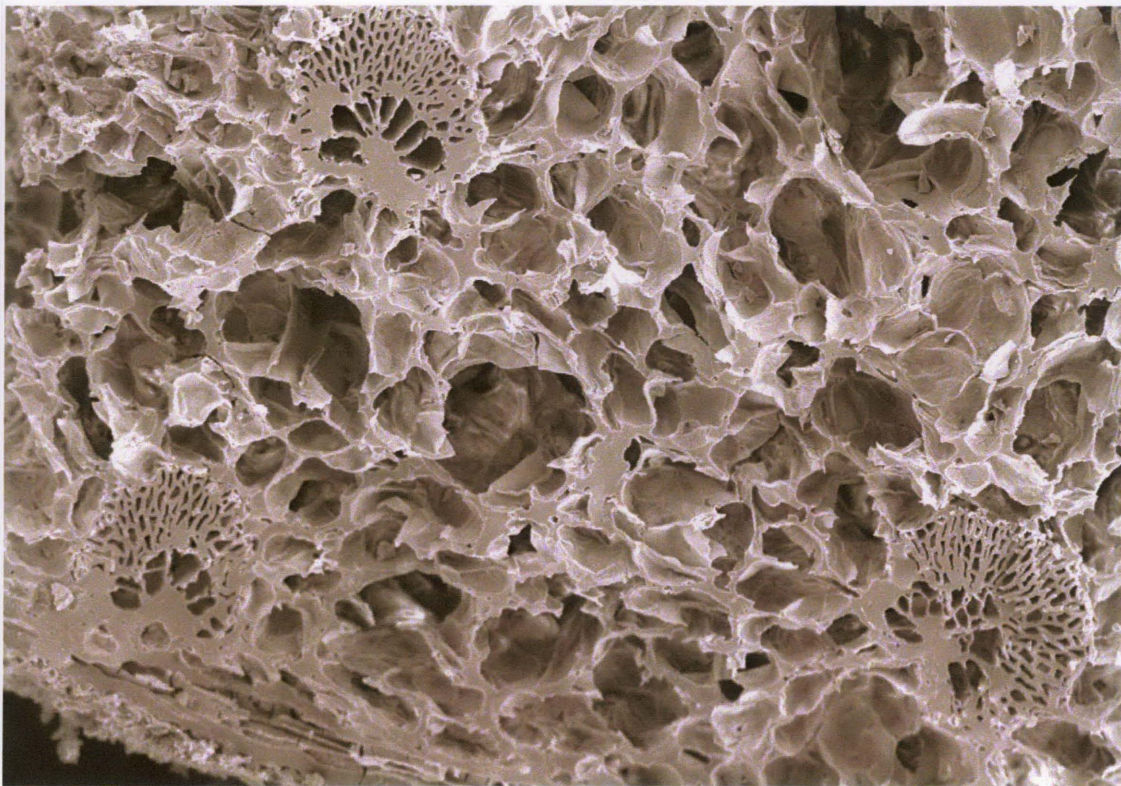


Appendix 3 Examples of SEM Pictures and Notes from B.Gott

S6A - possibly young root arising from a rhizome - *Triglochin*??

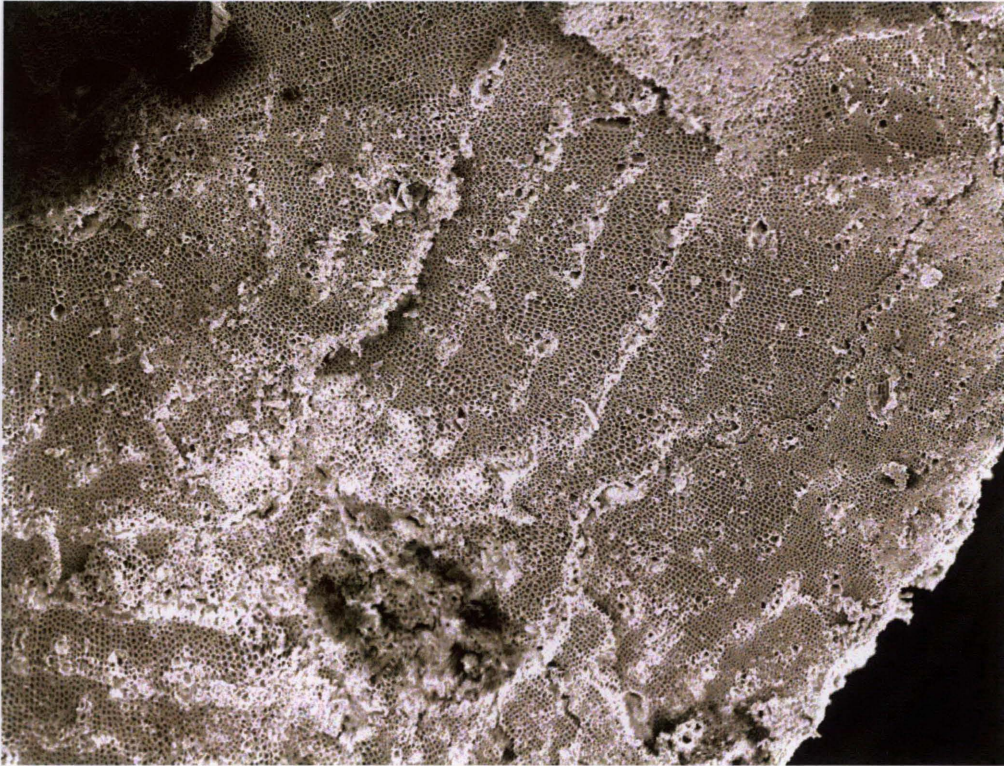


S7A - ? young root arising from rhizome - fibre bundles consistent with *Typha*

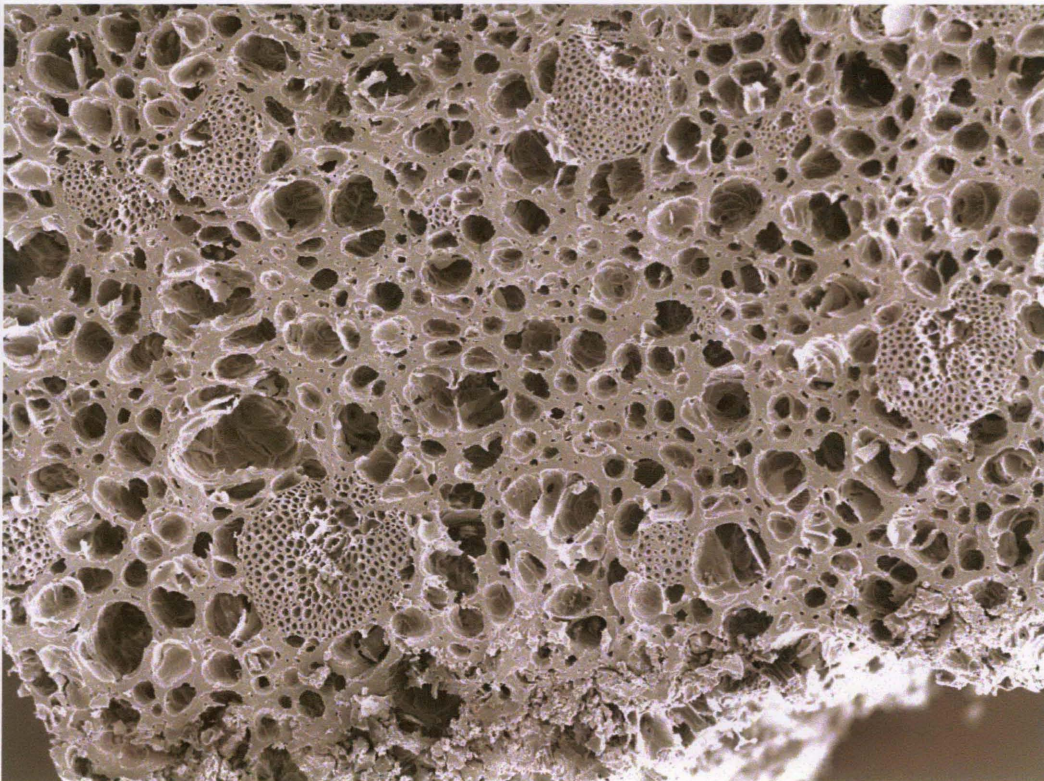


*Appendix 3 Examples of SEM Pictures and Notes from B.Gott*

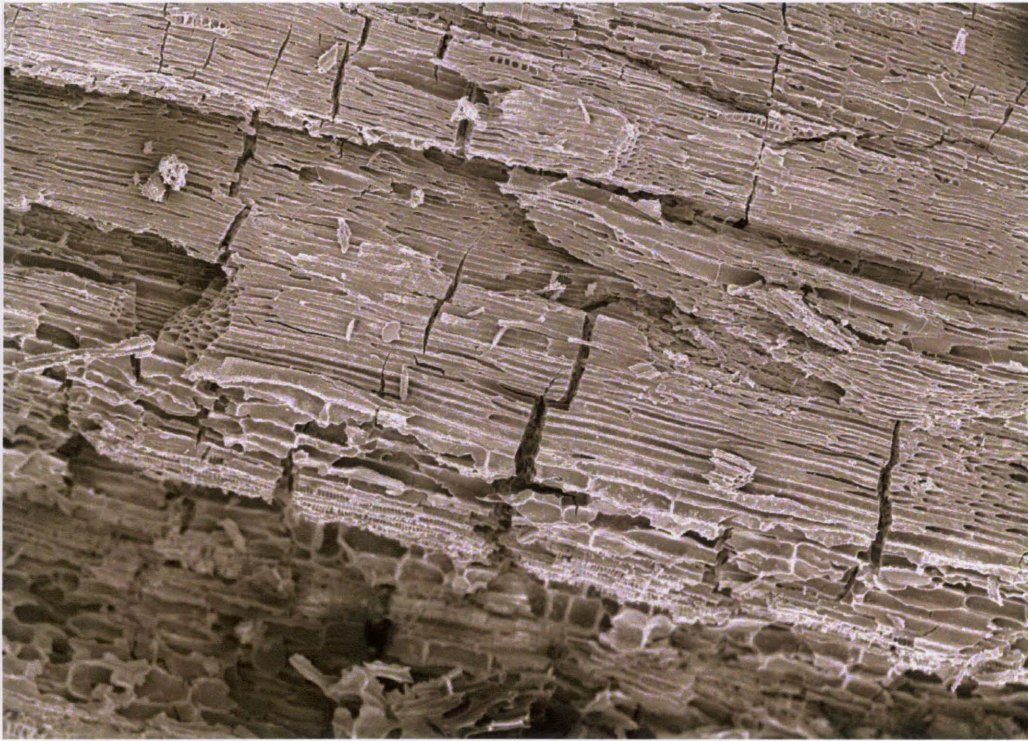
S8A - wood, few vessels, mostly tracheids, probably dicot, showing annual rings. Annual rings seem to indicate stable climatic conditions? *Acacia* ?



S9B - as for S1, monocot fibre bundles consistent with *Typha*



S11A - wood



S11B - transverse section of above - wood

