

C: SITE RECORD FORM

DATE OF COLLECTION		LAT		LONG	
SITE NUMBER		REGION			

LOCATION					
MAP REF					

LAND USE

TENURE		If Other State	
MUNICIPALITY/SIRE		CONTACT	
ADDRESS		PHONE	

LANDFORM

GEOLOGY

SCOPE		MAPPED		OBSERVED	
ASPECT		NOTES			
ALTITUDE		m	NUT	P	N OTHER
					pH

HORIZONTAL ELEVATION

N	NE	E	SE	S	SW	W	NW

GRANITOID LANDFORM

REGION	All Slope	SELECTED AREA	Bornhardt
Boulders		Crevices:	
Boulder Cover		Vegetation:	

FLORISTICS

	FAMILY	GENERA	SPECIES	INTRA
CONIFER				
MONOCOT				
DICOT				
EXOTIC SPECIES			TOTAL TAXA	

SIGNIFICANT SPECIES

FIRE

DISTURBANCE

OBS TYPE		GRAZING		CLEARING	
ACCURACY		POLLUTION		WEEDS	
SEVERITY		OTHER			
HISTORY		NOTES			
ADDITIONAL NOTES					

JOHN HUNTER
BOTANY DEPARTMENT, UNE

W.P & G.P. Anonymous
Address
Address
Address

Re: Granite Outcrop Vegetation

Dear Mr Anonymous,

I am a Doctor of Philosophy student in the Department of Botany at the University of New England, studying the *Floristics and Biogeography of the Granite Outcrop Flora of the New England Batholith*. What this entails is finding out what plants occur on the most exposed granite domes and pretty much trying to find out which outcrop areas are more related to each other. In other words which areas share the same species and why (i.e. is it related to the type of granite, or altitude, or weather etc.). Also how these plants got to these hostile environments. In short, the plants on these exposed areas may be different to those in the surrounding forest vegetation. So I am looking at the outcrops as if they are islands in a sea of forest and trying to understand how these plants can colonize such places and survive there. The area that I am looking at extends from Girraween National Park in Queensland in the north and Moonbi and Attunga State Forest in the south, and from Ashford in the west to Gibraltar Range in the east. In total, about 24 areas will be sampled.

My interest in contacting you about this is that I have found, via aerial photographs and topographic maps, that you have some granite outcrops on your property. Essentially, I wish to ask permission to enter you property and sample these places. All I would need to do is place (depending on the size of the outcrop) a few 32 x 32 m quadrats (essentially squares marked out with measuring tapes) and identify what plants occur there. In some instances, I would need a sample of each species to help identify the plants back at the laboratory. This work will occur some time over the next year to a year and a half, but only a few days or less will need to be spent in any one place. Because this work is being carried out for the university, I will be completely covered by their insurance at all times. That is all that is needed.

To make things easier for everyone I have included a small questionnaire and a self addressed return envelope that I ask for you to fill in for me please. If you have any questions please don't hesitate to contact me at anytime. Thankyou for you time and I hope you will give me permission.

Yours Sincerely,

John T. Hunter
Department of Botany
University of New England
Armidale, NSW 2350
Ph: (067) 722 662

Address of landholder

Name

Please tick the appropriate box:

I do not give permission for you to work on our property

If you ticked the above box forget the next questions and please mail this letter back to me and I will not contact you any further on this matter.

I wish to have more information before I decide

I do give permission for you to work on our property

I wish to be contacted before you enter the property

Please contact me by mail **or by phone** **on**

I would like to know what you find on our land

I would like to know what you find in the area

I would like to know any information about these plants (usefulness, weediness, poisonous etc)

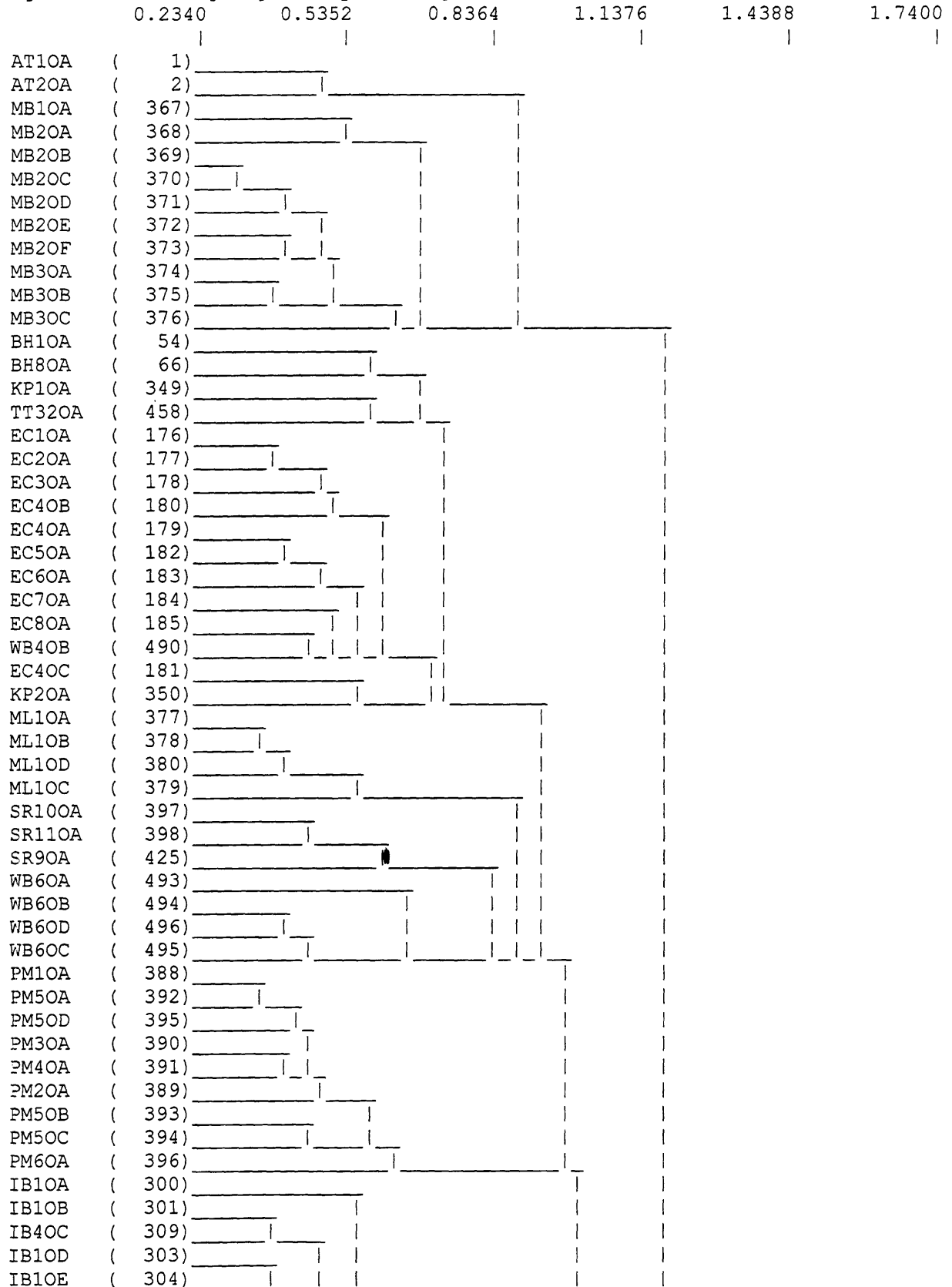
I would like to know what was concluded from the study

Thankyou again !

Full floristic dendrogram of all surveyed sites, both of outcrops and the surrounding flora.

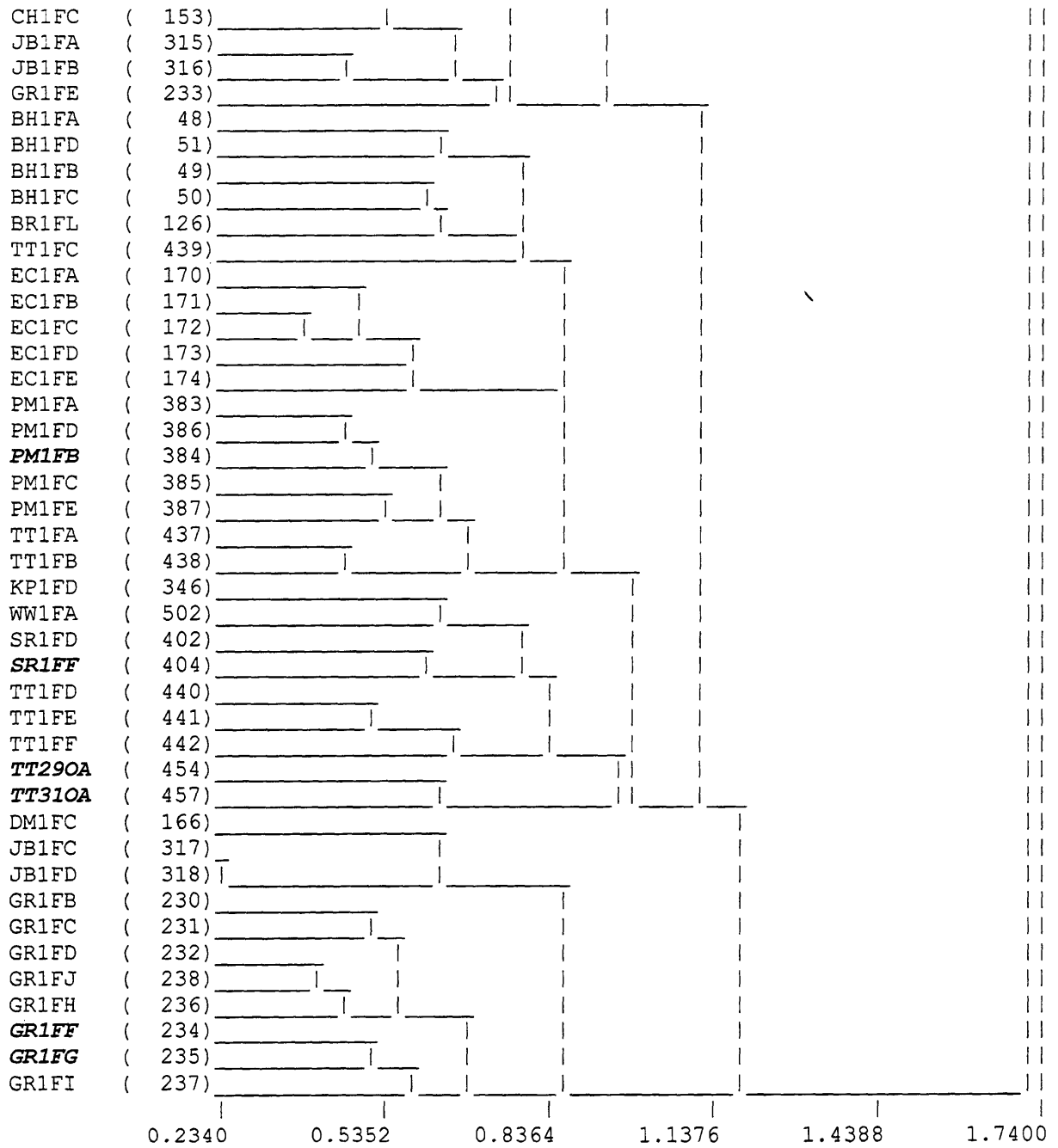
Dendrogram Total Floristics of all Granite Flora
Kulczynski association and Flexible UPGMA

Sites with anomalous distributions within the dendrogram or on the ordination Figure 3.1 are highlighted by bolding and italics see section 3.3.



IB40A	(307)	_____			
IB40B	(308)	_____			
IB10C	(302)	_____			
IB20A	(305)	_____			
IB50A	(310)	_____			
IB80A	(313)	_____			
IB70A	(312)	_____			
IB80B	(314)	_____			
IB30A	(306)	_____			
IB60A	(311)	_____			
FR100A	(186)	_____			
FR100B	(187)	_____			
FR60A	(211)	_____			
FR140A	(191)	_____			
FR150A	(192)	_____			
FR70A	(212)	_____			
FR70B	(213)	_____			
FR10B	(205)	_____			
FR30A	(208)	_____			
SR10A	(405)	_____			
SR70B	(420)	_____			
FR110A	(188)	_____			
FR90A	(215)	_____			
FR50A	(210)	_____			
FR10A	(204)	_____			
FR80A	(214)	_____			
FR40A	(209)	_____			
FR120A	(189)	_____			
YH10A	(518)	_____			
YH30A	(520)	_____			
YH30B	(521)	_____			
YH40A	(522)	_____			
FR190A	(198)	_____			
FR200A	(206)	_____			
YHW0A	(519)	_____			
FR180A	(197)	_____			
FR130A	(190)	_____			
WB70A	(497)	_____			
WB70B	(498)	_____			
WB70C	(499)	_____			
ML30A	(382)	_____			
WB50A	(491)	_____			
WB40A	(489)	_____			
WB50B	(492)	_____			
WB80A	(500)	_____			
WB90A	(501)	_____			
WB10C	(485)	_____			
WB20A	(487)	_____			
WB10D	(486)	_____			
WB30A	(488)	_____			
WB100A	(473)	_____			
WB120A	(475)	_____			
WB110A	(474)	_____			
WB130A	(476)	_____			
FR160A	(193)	_____			
FR160B	(194)	_____			
FR160C	(195)	_____			
FR170A	(196)	_____			
FR20A	(207)	_____			
ML20A	(381)	_____			
BH1FE	(52)	_____			

GR14OB	(227)	_____ _____							
GR1OB	(240)	_____ _____							
GR6OA	(246)	_____ _____							
GR4OA	(244)	_____ _____							
GR5OA	(245)	_____ _____							
GR2OB	(242)	_____ _____							
GR3OA	(243)	_____ _____							
GR7OA	(247)	_____ _____							
GR8OA	(248)	_____ _____							
GR9OA	(249)	_____ _____							
BH1OB	(55)	_____ _____							
BH6OC	(65)	_____ _____							
BH4OA	(60)	_____ _____							
BH1OC	(56)	_____ _____							
BH1OD	(57)	_____ _____							
BH3OA	(59)	_____ _____							
BH6OB	(64)	_____ _____							
BH2OA	(58)	_____ _____							
BH6OA	(63)	_____ _____							
BH4OB	(61)	_____ _____							
BH5OA	(62)	_____ _____							
CH1OA	(154)	_____ _____							
CH2OA	(155)	_____ _____							
GR13OA	(225)	_____ _____							
TT10OA	(426)	_____ _____							
TT12OA	(428)	_____ _____							
TT26OA	(451)	_____ _____							
TT9OA	(469)	_____ _____							
TT8OA	(466)	_____ _____							
TT8OB	(467)	_____ _____							
TT9OB	(470)	_____ _____							
TT9OC	(471)	_____ _____							
TT9OD	(472)	_____ _____							
TT25OA	(450)	_____ _____							
TT8OC	(468)	_____ _____							
TT14OA	(430)	_____ _____							
TT19OA	(436)	_____ _____							
TT27OA	(452)	_____ _____							
TT20OA	(445)	_____ _____							
TT21OA	(446)	_____ _____							
TT5OA	(462)	_____ _____							
TT5OB	(463)	_____ _____							
TT11OA	(427)	_____ _____							
TT13OA	(429)	_____ _____							
TT15OA	(431)	_____ _____							
TT15OB	(432)	_____ _____							
TT22OA	(447)	_____ _____							
TT24OA	(449)	_____ _____							
TT30OA	(456)	_____ _____							
TT28OA	(453)	_____ _____							
TT16OA	(433)	_____ _____							
TT17OA	(434)	_____ _____							
TT23OA	(448)	_____ _____							
TT18OA	(435)	_____ _____							
TT1OA	(443)	_____ _____							
TT1OB	(444)	_____ _____							
TT2OA	(455)	_____ _____							
TT3OA	(459)	_____ _____							
TT4OA	(460)	_____ _____							
TT6OA	(464)	_____ _____							
TT7OA	(465)	_____ _____							



Species insularity scores (see Chapter 3).

Name	Insularity No.
<i>Acacia adunca</i>	3
<i>Acacia barringtonensis</i>	1
<i>Acacia betchei</i>	1
<i>Acacia brownei</i>	0
<i>Acacia buxifolia</i>	1
<i>Acacia cheelii</i>	3
<i>Acacia falcata</i>	2
<i>Acacia falciformis</i>	2
<i>Acacia filicifolia</i>	0
<i>Acacia fimbriata</i>	1
<i>Acacia floribunda</i>	0
<i>Acacia floydii</i>	2
<i>Acacia granitica</i>	6
<i>Acacia gunnii</i>	1
<i>Acacia implexa</i>	0
<i>Acacia juncifolia</i>	2
<i>Acacia latisepala</i>	6
<i>Acacia leiocalyx</i>	3
<i>Acacia leptoclada</i>	0
<i>Acacia longifolia</i>	2
<i>Acacia macnuttiana</i>	2
<i>Acacia mitchellii</i>	0
<i>Acacia myrtifolia</i>	0
<i>Acacia neriifolia</i>	2
<i>Acacia obtusifolia</i>	2
<i>Acacia orites</i>	0
<i>Acacia penninervis</i>	2
<i>Acacia polybotrya</i>	1
<i>Acacia pruinosa</i>	2
<i>Acacia pycnostachya</i>	6
<i>Acacia rubida</i>	2
<i>Acacia</i> sp. aff. <i>torringtonensis</i>	2
<i>Acacia stricta</i>	2
<i>Acacia suaveolens</i>	4
<i>Acacia torringtonensis</i>	3
<i>Acacia triptera</i>	4
<i>Acacia ulicifolia</i>	2
<i>Acacia venulosa</i>	3
<i>Acacia viscidula</i>	3
<i>Acacia williamsiana</i>	3
<i>Acaena novae-zelandiae</i>	1
<i>Acetosella vulgaris</i>	2
<i>Acianthus apprimus</i>	2
<i>Acianthus collinus</i>	2

<i>Acianthus exiguus</i>	0
<i>Acianthus exsertus</i>	2
<i>Acrotriche aggregata</i>	2
<i>Actinobole uliginosum</i>	2
<i>Actinotus gibbonsii</i>	4
<i>Actinotus helianthi</i>	4
<i>Adiantum aethiopicum</i>	0
<i>Adiantum hispidulum</i>	0
<i>Agrostis avenacea</i>	2
<i>Agrostis</i> sp. A	2
<i>Ailanthus altissima</i>	0
<i>Aira cupaniana</i>	0
<i>Ajuga australis</i>	2
<i>Allocasuarina brachystachya</i>	6
<i>Allocasuarina gymnanthera</i>	3
<i>Allocasuarina inophloia</i>	2
<i>Allocasuarina littoralis</i>	2
<i>Allocasuarina rigida</i> subsp. <i>rigida</i>	5
<i>Allocasuarina rupicola</i>	6
<i>Allocasuarina torulosa</i>	2
<i>Alphitona excelsa</i>	2
<i>Amperea xiphoclada</i> var. <i>xiphoclada</i>	2
<i>Amphipogon strictus</i>	2
<i>Amyema cambagei</i>	2
<i>Amyema miquelii</i>	2
<i>Amyema pendulum</i>	2
<i>Anagallis arvensis</i>	2
<i>Angophora floribunda</i>	1
<i>Aotus subglauca</i>	2
<i>Arctotheca calendula</i>	0
<i>Arenaria leptoclados</i>	0
<i>Aristida jerichoensis</i> subsp. <i>subspinulifera</i>	2
<i>Aristida ramosa</i>	2
<i>Aristida vagans</i>	2
<i>Arthropodium milleflorum</i>	2
<i>Arthropodium minus</i>	2
<i>Arundinella nepalensis</i>	1
<i>Asplenium flavellifolium</i>	2
<i>Astrotricha longifolia</i>	2
<i>Astrotricha roddii</i>	3
<i>Austrodanthonia induta</i>	2
<i>Austrodanthonia linkii</i>	2
<i>Austrodanthonia monticola</i>	3
<i>Austrodanthonia penicillata</i>	2
<i>Austrodanthonia pilosa</i>	2
<i>Austrodanthonia racemosa</i>	2

<i>Austrodanthonia richardsonii</i>	2
<i>Austrostipa aristiglumis</i>	2
<i>Austrostipa bigeniculata</i>	1
<i>Austrostipa pubescens</i>	1
<i>Austrostipa rudis</i>	0
<i>Austrostipa scabra</i>	2
<i>Austrostipa setacea</i>	2
<i>Austrostipa tuckeri</i>	2
<i>Austrostipa verticillata</i>	0
<i>Babingtonia densifolia</i>	4
<i>Babingtonia odontocalyx</i>	6
<i>Banksia integrifolia</i> subsp. A	1
<i>Banksia spinulosa</i> var. <i>collina</i>	2
<i>Bertya cunninghamii</i>	3
<i>Bertya glandulosa</i>	0
<i>Bertya gummifera</i>	4
<i>Beyeria viscosa</i>	5
<i>Bidens pilosa</i>	2
<i>Bidens subalternans</i>	2
<i>Billardiera scandens</i>	2
<i>Blechnum cartilagineum</i>	2
<i>Boerhavia dominii</i>	4
<i>Boronia algida</i>	2
<i>Boronia amabilis</i>	6
<i>Boronia anemonifolia</i>	3
<i>Boronia anethifolia</i>	3
<i>Boronia boliviensis</i>	6
<i>Boronia granitica</i>	6
<i>Boronia microphylla</i>	2
<i>Bossiaea heterophylla</i>	0
<i>Bossiaea neo-anglica</i>	2
<i>Bossiaea obcordata</i>	1
<i>Bossiaea prostrata</i>	0
<i>Bossiaea rhombifolia</i>	2
<i>Bossiaea scortechinii</i>	1
<i>Bothriochloa decipiens</i>	0
<i>Bothriochloa macra</i>	2
<i>Brachychiton populneus</i>	2
<i>Brachycome dissectifolia</i>	0
<i>Brachycome microcarpa</i>	1
<i>Brachycome multifida</i>	1
<i>Brachycome nova-anglica</i>	0
<i>Brachycome scapigera</i>	0
<i>Brachycome stuartii</i>	6
<i>Brachycome tenuiscapa</i>	0
<i>Brachyloma daphnoides</i> subsp. <i>glabrum</i>	2

<i>Brachyloma saxicola</i>	6
<i>Bracteantha bracteatum</i>	0
<i>Breynia cernua</i>	0
<i>Briza minor</i>	0
<i>Bromus catharticus</i>	2
<i>Brunoniella australis</i>	0
<i>Bulbine semibarbata</i>	2
<i>Bulbophyllum bracteatum</i>	0
<i>Bulbophyllum elisae</i>	2
<i>Bulbostylis barbata</i>	2
<i>Bulbostylis densa</i>	3
<i>Bulbostylis pyriformis</i>	3
<i>Bursaria spinosa</i> subsp. <i>obovata</i>	2
<i>Caesia calliantha</i>	2
<i>Caesia parviflora</i>	0
<i>Caladenia catenata</i>	2
<i>Caladenia fuscata</i>	2
<i>Caladenia tentaculata</i>	2
<i>Calandrinia eremaea</i>	4
<i>Calandrinia pickeringii</i>	4
<i>Calandrinia</i> sp. nov.	6
<i>Callistemon citrinus</i>	2
<i>Callistemon comboynensis</i>	5
<i>Callistemon flavovirens</i>	2
<i>Callistemon linearis</i>	0
<i>Callistemon pallidus</i>	2
<i>Callistemon pungens</i>	2
<i>Callitris endlicheri</i>	2
<i>Callitris glaucophylla</i>	2
<i>Callitris monticola</i>	6
<i>Callitris rhomboidea</i>	5
<i>Calochilus campestris</i>	2
<i>Calochlaena dubia</i>	2
<i>Calotis cuneifolia</i>	2
<i>Calotis dentex</i>	0
<i>Calotis hispidula</i>	2
<i>Calotis lappulaceae</i>	2
<i>Calytrix tetragona</i>	4
<i>Canthium odoratum</i>	4
<i>Carduus tenuiflorus</i>	1
<i>Carex appressa</i>	2
<i>Carex gaudichaudiana</i>	2
<i>Carex inomitata</i>	0
<i>Cassinia aculeata</i>	2
<i>Cassinia laevis</i>	2
<i>Cassinia quinquefaria</i>	2

<i>Cassinia uncata</i>	2
<i>Cassytha filiformis</i>	2
<i>Cassytha globella</i>	2
<i>Cassytha pubescens</i>	2
<i>Casuarina cunninghamiana</i>	1
<i>Caustis flexuosa</i>	2
<i>Centaurium erythraea</i>	0
<i>Centrolepis strigosa</i>	4
<i>Chamaesyce drummondii</i>	2
<i>Cheilanthes distans</i>	2
<i>Cheilanthes sieberi</i> subsp. <i>sieberi</i>	2
<i>Chenopodium carinatum</i>	2
<i>Chenopodium pumilio</i>	2
<i>Chiloglottis diphylla</i>	0
<i>Chiloglottis reflexa</i>	2
<i>Chionochloa pallida</i>	2
<i>Chloanthes parviflora</i>	5
<i>Chloris truncata</i>	0
<i>Choretrum candollei</i>	2
<i>Choretrum glomeratum</i>	0
<i>Choretrum pauciflorum</i>	0
<i>Choretrum</i> sp. A	2
<i>Chrysocephalum apiculatum</i>	2
<i>Chrysocephalum semipapposum</i>	2
<i>Cirsium vulgare</i>	0
<i>Citriobatus pauciflorus</i>	0
<i>Citrullus lanatus</i>	2
<i>Cleistochloa rigida</i>	4
<i>Clematis aristata</i>	0
<i>Clematis glycinoides</i>	1
<i>Comesperma ericinum</i>	1
<i>Comesperma sylvestre</i>	1
<i>Commelina cyanea</i>	4
<i>Conospermum burgessiorum</i>	0
<i>Conospermum taxifolium</i>	0
<i>Conyza albida</i>	2
<i>Conyza bonariensis</i>	2
<i>Correa reflexa</i>	2
<i>Corybas fimbriatus</i>	2
<i>Corymbia dolichocarpa</i>	1
<i>Cotula australis</i>	2
<i>Craspedia variabilis</i>	0
<i>Crassula decumbens</i> var. <i>decumbens</i>	0
<i>Crassula sieberiana</i>	4
<i>Cryptandra amara</i> var. <i>amara</i>	4
<i>Cryptandra amara</i> var. <i>floribunda</i>	4

<i>Cryptandra lanosiflora</i>	6
<i>Cryptostylis subulata</i>	2
<i>Cullen tenax</i>	0
<i>Cyathea australis</i>	1
<i>Cymbidium canaliculatum</i>	2
<i>Cymbonotus lawsonianus</i>	2
<i>Cymbopogon obtectus</i>	2
<i>Cymbopogon refractus</i>	2
<i>Cynodon dactylon</i>	2
<i>Cynoglossum australe</i>	2
<i>Cyperus eragrostis</i>	0
<i>Cyperus fulvus</i>	3
<i>Cyperus gracilis</i>	2
<i>Cyperus imbecillis</i>	0
<i>Cyphanthera albicans</i> subsp. <i>albicans</i>	4
<i>Cyrtostylis reniformis</i>	0
<i>Dampiera lanceolata</i>	2
<i>Dampiera stricta</i>	2
<i>Datura stamonium</i>	1
<i>Davallia pyxidata</i>	5
<i>Daviesia latifolia</i>	0
<i>Daviesia ulicifolia</i> subsp. <i>pilligensis</i>	2
<i>Daviesia ulicifolia</i> subsp. <i>stenophylla</i>	0
<i>Daviesia umbellulata</i>	0
<i>Daviesia villifera</i>	0
<i>Daviesia wyattiana</i>	0
<i>Dendrobium kingianum</i>	2
<i>Dendrobium pugioniforme</i>	2
<i>Dendrobium speciosum</i>	2
<i>Derwentia arcuata</i>	0
<i>Derwentia derwentiana</i>	0
<i>Desmodium brachypodium</i>	1
<i>Desmodium varians</i>	1
<i>Deyeuxia mckiei</i>	2
<i>Deyeuxia parviseta</i>	0
<i>Dianella caerulea</i> var. <i>asserata</i>	2
<i>Dianella caerulea</i> var. <i>caerulea</i>	2
<i>Dianella longifolia</i>	2
<i>Dianella revoluta</i>	2
<i>Dianella tasmanica</i>	2
<i>Dichanthium setosum</i>	2
<i>Dichelachne crinita</i>	0
<i>Dichelachne micrantha</i>	2
<i>Dichelachne rara</i>	1
<i>Dichelachne sieberiana</i>	1
<i>Dichondra repens</i>	1

<i>Dichondra</i> sp. A	2
<i>Dichopogon fimbriatus</i>	2
<i>Dicksonia antarctica</i>	0
<i>Digitaria breviglumis</i>	4
<i>Digitaria brownii</i>	2
<i>Digitaria diffusa</i>	0
<i>Digitaria longiflora</i>	2
<i>Digitaria ramularis</i>	0
<i>Dillwynia phyllicoides</i>	2
<i>Dillwynia retorta</i>	2
<i>Dillwynia sieberi</i>	2
<i>Dimorphotheca pluvialis</i>	1
<i>Dipodium variegatum</i>	2
<i>Diuris abbreviata</i>	2
<i>Dodonaea boroniifolia</i>	2
<i>Dodonaea falcata</i>	2
<i>Dodonaea hirsuta</i>	3
<i>Dodonaea stenophylla</i>	4
<i>Dodonaea triquetra</i>	2
<i>Dodonaea viscosa</i>	2
<i>Doodia aspera</i>	2
<i>Doodia media</i>	0
<i>Drosera auriculata</i>	2
<i>Drosera peltata</i>	2
<i>Drosera spatulata</i>	2
<i>Echinopogon caespitosus</i>	2
<i>Echinopogon cheelii</i>	0
<i>Echinopogon intermedius</i>	0
<i>Echinopogon nutans</i>	0
<i>Echinopogon ovatus</i>	2
<i>Einadia hastata</i>	2
<i>Einadia nutans</i>	2
<i>Einadia trigonos</i>	0
<i>Elaeocarpus holopetalus</i>	2
<i>Elaeocarpus reticulatus</i>	2
<i>Eleocharis plana</i>	0
<i>Eleocharis sphacelata</i>	2
<i>Empodisma minus</i>	1
<i>Enneapogon nigricans</i>	2
<i>Entolasia stricta</i>	2
<i>Epacris longiflora</i>	3
<i>Epacris microphylla</i> var. <i>microphylla</i>	2
<i>Epacris obtusifolia</i>	1
<i>Epaltes australis</i>	0
<i>Epilobium billardierianum</i> var. <i>cinereum</i>	0
<i>Eragrostis benthamii</i>	2

<i>Eragrostis brownii</i>	2
<i>Eragrostis elongata</i>	2
<i>Eragrostis laniflora</i>	0
<i>Eragrostis leptostachya</i>	2
<i>Eragrostis mollybdea</i>	2
<i>Eragrostis tenuifolia</i>	2
<i>Eriochilus cucullatus</i>	0
<i>Eriostemon australasius</i>	4
<i>Eucalyptus acaciiformis</i>	2
<i>Eucalyptus albens</i>	2
<i>Eucalyptus andrewsii</i>	2
<i>Eucalyptus banksii</i>	2
<i>Eucalyptus blakelyi</i>	0
<i>Eucalyptus bridgesiana</i>	2
<i>Eucalyptus brunnea</i>	2
<i>Eucalyptus caleyi</i>	2
<i>Eucalyptus caliginosa</i>	2
<i>Eucalyptus cameronii</i>	2
<i>Eucalyptus campanulata</i>	2
<i>Eucalyptus codonocarpa</i>	5
<i>Eucalyptus crebra</i>	2
<i>Eucalyptus dalrympleana</i>	2
<i>Eucalyptus dealbata</i>	2
<i>Eucalyptus dunnii</i>	0
<i>Eucalyptus exserta</i>	0
<i>Eucalyptus laevopinea</i>	0
<i>Eucalyptus ligustrina</i>	2
<i>Eucalyptus macrorhyncha</i>	2
<i>Eucalyptus malacoxylon</i>	0
<i>Eucalyptus mckieana</i>	2
<i>Eucalyptus melliodora</i>	0
<i>Eucalyptus notabilis</i>	2
<i>Eucalyptus nova-anglica</i>	0
<i>Eucalyptus pauciflora</i>	0
<i>Eucalyptus prava</i>	3
<i>Eucalyptus quinniorum</i>	3
<i>Eucalyptus radiata</i>	2
<i>Eucalyptus scias</i> subsp. <i>apoda</i>	3
<i>Eucalyptus scoparia</i>	3
<i>Eucalyptus sideroxylon</i>	0
<i>Eucalyptus subillior</i>	0
<i>Eucalyptus williamsiana</i>	2
<i>Eucalyptus youmanii</i>	2
<i>Euchiton involucratus</i>	2
<i>Euchiton sphaericus</i>	2
<i>Eulalia aurea</i>	2

<i>Euphorbia eremophila</i>	4
<i>Euphorbia planiticola</i>	0
<i>Eustrephus latifolius</i>	2
<i>Evolvulus alsinoides</i>	2
<i>Exocarpus cupressiformis</i>	2
<i>Exocarpus strictus</i>	2
<i>Ficus rubiginosa</i>	4
<i>Fimbristylis dichotoma</i>	3
<i>Gahnia aspera</i>	2
<i>Gahnia sieberiana</i>	2
<i>Gahnia subaequiglumis</i>	0
<i>Galium aparine</i>	0
<i>Galium ciliare</i>	0
<i>Galium gaudichaudii</i>	1
<i>Galium migrans</i>	2
<i>Galium propinquum</i>	0
<i>Genista stenopetala</i>	0
<i>Genoplesium fimbriatum</i>	1
<i>Geranium molle</i>	2
<i>Geranium potentilloides</i>	0
<i>Geranium solanderi</i> var. <i>grande</i>	2
<i>Geranium solanderi</i> var. <i>solanderi</i>	2
<i>Gleichenia dicarpa</i>	1
<i>Glossodia major</i>	1
<i>Glossogyne tannensis</i>	0
<i>Glycine clandestina</i>	2
<i>Glycine microphylla</i>	1
<i>Glycine tabacina</i>	1
<i>Gnaphalium americanum</i>	2
<i>Gomphocarpus fruticosus</i>	1
<i>Gompholobium huegelii</i>	2
<i>Gompholobium inconspicuum</i>	0
<i>Gompholobium latifolium</i>	0
<i>Gonocarpus elatus</i>	2
<i>Gonocarpus micranthus</i> subsp. <i>micranthus</i>	2
<i>Gonocarpus oreophilus</i>	2
<i>Gonocarpus tetragynus</i>	2
<i>Gonocarpus teucrioides</i>	2
<i>Goodenia bellidifolia</i> subsp. <i>argentea</i>	2
<i>Goodenia hederacea</i>	2
<i>Gratiola peruviana</i>	1
<i>Grevillea acerata</i>	6
<i>Grevillea floribunda</i>	2
<i>Grevillea linearifolia</i>	2
<i>Grevillea mucromulata</i>	2
<i>Grevillea ramosissima</i>	2

<i>Grevillea scortechinii</i> subsp. <i>sarmentosa</i>	0
<i>Grevillea triternata</i>	2
<i>Gymnoschoenus sphaerocephalus</i>	1
<i>Haemodorum planifolium</i>	1
<i>Hakea dactyloides</i>	2
<i>Hakea decurrens</i>	2
<i>Hakea eriantha</i>	2
<i>Hakea macrorrhyncha</i>	6
<i>Haloragis aspera</i>	2
<i>Haloragis heterophylla</i>	0
<i>Hardenbergia violacea</i>	2
<i>Helichrysum boormanii</i>	2
<i>Helichrysum elatum</i>	4
<i>Helichrysum scorpioides</i>	0
<i>Hibbertia acicularis</i>	2
<i>Hibbertia aspera</i>	1
<i>Hibbertia cistoidea</i>	1
<i>Hibbertia dentata</i>	0
<i>Hibbertia kaputarensis</i>	5
<i>Hibbertia linearis</i>	2
<i>Hibbertia monogyna</i>	6
<i>Hibbertia obtusifolia</i>	2
<i>Hibbertia riparia</i>	2
<i>Hibbertia scandens</i>	2
<i>Hibbertia serpyllifolia</i>	2
<i>Hibbertia</i> sp. "grandiflora"	6
<i>Hibbertia</i> sp. B	3
<i>Hibbertia villosa</i>	2
<i>Homoranthus biflorus</i>	6
<i>Homoranthus bornhardtiensis</i>	6
<i>Homoranthus croftianus</i>	6
<i>Homoranthus papillatus</i>	6
<i>Homoranthus prolixus</i>	6
<i>Hovea lanceolata</i>	2
<i>Hovea linearis</i>	0
<i>Hovea purpurea</i>	2
<i>Hovea</i> sp. A	3
<i>Hybanthus monopetalus</i>	2
<i>Hydrocotyle geraniifolia</i>	2
<i>Hydrocotyle laxiflora</i>	0
<i>Hydrocotyle peduncularis</i>	2
<i>Hydrocotyle tripartita</i>	2
<i>Hypericum gramineum</i>	2
<i>Hypochaeris glabra</i>	1
<i>Hypochaeris radicata</i>	2
<i>Hypolepis glandulifera</i>	0

<i>Hypoxis exilis</i>	2
<i>Imperata cylindrica</i>	1
<i>Indigofera adesmiifolia</i>	0
<i>Indigofera australis</i>	1
<i>Indigofera brevidens</i>	0
<i>Ipomoea cairica</i>	1
<i>Isolepis hookeriana</i>	2
<i>Isopogon petiolaris</i>	2
<i>Isotoma anethifolia</i>	5
<i>Isotoma axillaris</i>	6
<i>Jacksonia scoparia</i>	2
<i>Jasminum lineare</i>	0
<i>Juncus bufonius</i>	2
<i>Juncus continuus</i>	2
<i>Juncus firmus</i>	1
<i>Juncus laeviusculus</i>	1
<i>Juncus remotiflorus</i>	2
<i>Juncus subsecundus</i>	1
<i>Kennedia rubicunda</i>	0
<i>Kunzea bracteolata</i>	6
<i>Kunzea obovata</i>	3
<i>Kunzea opposita</i>	4
<i>Kunzea parvifolia</i>	2
<i>Lagenifera gracilis</i>	1
<i>Lagenifera stipitata</i>	1
<i>Lasiopetalum ferrugineum</i> var. <i>cordatum</i>	4
<i>Laxmannia compacta</i>	4
<i>Laxmannia gracilis</i>	4
<i>Leionema ambiens</i>	6
<i>Leionema dentatum</i>	4
<i>Leionema rotundifolium</i>	6
<i>Lepidium pseudohyssopifolium</i>	1
<i>Lepidosperma gunnii</i>	4
<i>Lepidosperma laterale</i>	2
<i>Lepidosperma neesii</i>	1
<i>Lepidosperma tortuosum</i>	2
<i>Leptomeria drupacea</i>	0
<i>Leptospermum arachnoides</i>	2
<i>Leptospermum brachyandrum</i>	2
<i>Leptospermum brevipes</i>	2
<i>Leptospermum minutifolium</i>	2
<i>Leptospermum novae-angliae</i>	6
<i>Leptospermum parvifolium</i>	0
<i>Leptospermum polygalifolium</i> subsp. <i>transmontanum</i>	3
<i>Leptospermum trinervium</i>	2

<i>Leptospermum variabile</i>	2
<i>Lepyrodia anarthria</i>	2
<i>Lepyrodia leptocaulis</i>	2
<i>Lepyrodia scariosa</i>	2
<i>Leucopogon attenuatus</i>	2
<i>Leucopogon biflorus</i>	3
<i>Leucopogon cicatricatus</i>	5
<i>Leucopogon hookeri</i>	0
<i>Leucopogon lanceolatus</i> var. <i>lanceolatus</i>	2
<i>Leucopogon melaleuroides</i>	2
<i>Leucopogon microphyllus</i>	2
<i>Leucopogon muticus</i>	2
<i>Leucopogon neo-anglicus</i>	5
<i>Leucopogon</i> sp. aff. <i>appressus</i>	0
<i>Leucopogon virgatus</i>	1
<i>Lindsaea linearis</i>	2
<i>Lissanthe strigosa</i>	1
<i>Lobelia gibbosa</i>	2
<i>Lobelia gracilis</i>	4
<i>Logania albiflora</i>	1
<i>Lolium multiflorum</i>	1
<i>Lomandra confertifolia</i>	1
<i>Lomandra cylindrica</i>	1
<i>Lomandra elongata</i>	0
<i>Lomandra filiformis</i> subsp. <i>filiformis</i>	2
<i>Lomandra longifolia</i>	3
<i>Lomandra multiflora</i>	2
<i>Lomatia fraseri</i>	2
<i>Lomatia silaifolia</i>	2
<i>Lophostemon confertus</i>	2
<i>Luzula flaccida</i>	2
<i>Lycopodium deuterodensum</i>	0
<i>Lycopodium laterale</i>	2
<i>Macrozamia heteromera</i>	0
<i>Marrubium vulgare</i>	1
<i>Marsdenia rostrata</i>	1
<i>Marsdenia viridiflora</i>	0
<i>Maytenus silvestris</i>	1
<i>Medicago arabica</i>	0
<i>Meleleuca erubescens</i>	0
<i>Melichrus erubescens</i>	4
<i>Melichrus procumbens</i>	1
<i>Melichrus urceolatus</i>	2
<i>Mentha diemenica</i>	1
<i>Micrantheum ericoides</i>	4
<i>Micrantheum hexandrum</i>	5

<i>Microlaena stipoides</i>	2
<i>Micromyrtus grandis</i>	6
<i>Micromyrtus sessilis</i>	4
<i>Microtis unifolia</i>	1
<i>Mirbelia confertiflora</i>	6
<i>Mirbelia pungens</i>	4
<i>Mirbelia rubiifolia</i>	3
<i>Mirbelia speciosa</i> subsp. <i>speciosa</i>	3
<i>Monotaxis macrophylla</i>	4
<i>Monotoca scoparia</i>	2
<i>Muehlenbeckia costata</i>	5
<i>Muehlenbeckia rhyticarya</i>	4
<i>Muellerina celastroides</i>	2
<i>Muellerina eucalyptoides</i>	2
<i>Murdannia graminea</i>	2
<i>Myoporum montanum</i>	4
<i>Notelaea linearis</i>	2
<i>Notelaea microcarpa</i>	2
<i>Notelaea</i> sp. A	6
<i>Notothixos cornifolius</i>	1
<i>Olax stricta</i>	4
<i>Olearia elliptica</i>	2
<i>Olearia gravis</i>	3
<i>Olearia microphylla</i>	2
<i>Olearia oppositifolia</i>	2
<i>Olearia ramosissima</i>	2
<i>Olearia viscidula</i>	2
<i>Opercularia aspera</i>	1
<i>Opercularia hispida</i>	2
<i>Ophioglossum lusitanicum</i>	4
<i>Opuntia aurantiaca</i>	2
<i>Opuntia stricta</i>	2
<i>Oreomyrrhis eriopoda</i>	0
<i>Oxalis chnoodes</i>	2
<i>Oxalis exilis</i>	2
<i>Oxalis perennans</i>	2
<i>Oxalis radicata</i>	2
<i>Ozothamnus diosmifolius</i>	3
<i>Ozothamnus obcordatus</i>	3
<i>Pandorea pandorana</i>	2
<i>Panicum antidotale</i>	0
<i>Panicum effusum</i>	2
<i>Panicum miliaceum</i>	2
<i>Panicum simile</i>	2
<i>Paronychia brasiliana</i>	1
<i>Parsonsia eucalyptophylla</i>	0

<i>Paspalidium constrictum</i>	2
<i>Paspalum dilatatum</i>	0
<i>Paspalum distichum</i>	2
<i>Patersonia glabrata</i>	2
<i>Patersonia sericea</i>	2
<i>Pelargonium australe</i>	2
<i>Pelargonium inodorum</i>	0
<i>Pellaea falcata</i> var. <i>falcata</i>	2
<i>Pellaea falcata</i> var. <i>nana</i>	2
<i>Persoonia cornifolia</i>	2
<i>Persoonia daphnoides</i>	0
<i>Persoonia fastigiata</i>	0
<i>Persoonia oleoides</i>	2
<i>Persoonia procumbens</i>	0
<i>Persoonia rufa</i>	2
<i>Persoonia sericea</i>	2
<i>Persoonia tenuifolia</i>	2
<i>Persoonia terminalis</i> subsp. <i>recurva</i>	2
<i>Persoonia terminalis</i> subsp. <i>terminalis</i>	2
<i>Petrophile canescens</i>	2
<i>Petrorhagia nanteuillii</i>	1
<i>Phebalium glandulosum</i>	4
<i>Phebalium squamulosum</i>	3
<i>Philotheca myoporoides</i> subsp. <i>conduplicatum</i>	6
<i>Philotheca myoporoides</i> subsp. <i>epilosum</i>	6
<i>Phyllanthus carpentariae</i>	4
<i>Phyllanthus gunnii</i>	0
<i>Phyllanthus hirtellus</i>	2
<i>Phyllanthus occidentalis</i>	2
<i>Phyllanthus subcrenulatus</i>	4
<i>Phyllanthus virgatus</i>	2
<i>Phyllota phyllicoides</i>	2
<i>Phytolacca octandra</i>	2
<i>Pimelea linifolia</i>	2
<i>Plantago debilis</i>	2
<i>Plantago lanceolata</i>	2
<i>Plantago major</i>	0
<i>Plantago varia</i>	2
<i>Platynerium bifurcatum</i>	2
<i>Platysace ericoides</i>	2
<i>Platysace lanceolata</i>	3
<i>Plectranthus graveolens</i>	3
<i>Plectranthus parviflorus</i>	3
<i>Plectranthus suaveolens</i>	6
<i>Pleurosorus subglandulosus</i>	4
<i>Poa fax</i>	2

<i>Poa labillardieri</i>	1
<i>Poa sieberiana</i>	2
<i>Podolepis jaceoides</i>	0
<i>Podolepis neglecta</i>	1
<i>Podolobium arborescens</i>	2
<i>Podolobium ellipticum</i>	4
<i>Podolobium ilicifolium</i>	2
<i>Polyscias sumbucifolius</i>	2
<i>Pomaderris andromedifolia</i>	2
<i>Pomaderris lanigera</i>	2
<i>Pomaderris nitidula</i>	2
<i>Pomaderris notata</i>	5
<i>Pomax umbellata</i>	2
<i>Poranthera corymbosa</i>	2
<i>Poranthera microphylla</i>	1
<i>Portulaca bicolor</i>	4
<i>Portulaca filifolia</i>	4
<i>Portulaca oleracea</i>	4
<i>Prasophyllum brevilabre</i>	2
<i>Prasophyllum campestre</i>	2
<i>Prasophyllum patens</i>	0
<i>Pratia purpurascens</i>	2
<i>Prostanthera howelliae</i>	4
<i>Prostanthera nivea</i>	3
<i>Prostanthera saxicola</i>	3
<i>Prostanthera scutellarioides</i>	3
<i>Prostanthera</i> sp. Boonoo Boonoo	6
<i>Prostanthera staurophylla</i>	6
<i>Prunella vulgaris</i>	1
<i>Pseudanthus divaricatissimus</i>	5
<i>Pseudanthus pimeleoides</i>	4
<i>Pseudanthus ovalifolius</i>	6
<i>Pteridium esculentum</i>	2
<i>Pterostylis boormanii</i>	1
<i>Pterostylis coccinea</i>	2
<i>Pterostylis daintreana</i>	2
<i>Pterostylis decurva</i>	1
<i>Pterostylis fischii</i>	1
<i>Pterostylis furcata</i>	1
<i>Pterostylis longifolia</i>	2
<i>Pterostylis mutica</i>	2
<i>Pterostylis parviflora</i>	1
<i>Pterostylis praetermissa</i>	1
<i>Pterostylis reflexa</i>	1
<i>Pterostylis setifera</i>	2
<i>Pterostylis woollsii</i>	1

<i>Pultenaea campbellii</i>	0
<i>Pultenaea foliolosa</i>	2
<i>Pultenaea hartmannii</i>	0
<i>Pultenaea pycnocephala</i>	0
<i>Pultenaea retusa</i>	1
<i>Pultenaea</i> sp. B.	1
<i>Pultenaea</i> sp. C	2
<i>Pultenaea</i> sp. G	0
<i>Pultenaea stuartiana</i>	2
<i>Pyrrosia confluens</i>	2
<i>Pyrrosia rupestris</i>	2
<i>Quintinia sieberi</i>	2
<i>Ranunculus lappaceus</i>	2
<i>Ranunculus sessiliflorus</i>	2
<i>Rapanea variabilis</i>	0
<i>Restio fimbriatus</i>	1
<i>Restio stenocoleus</i>	0
<i>Rhizosporium procumbens</i>	2
<i>Rorippa laciniata</i>	1
<i>Rosa rubiginosa</i>	1
<i>Rostellularia adscendens</i>	1
<i>Rubus fruticosus</i>	1
<i>Rubus parvifolius</i>	1
<i>Rumex brownii</i>	2
<i>Schizaea bifida</i>	2
<i>Schizaea dichotoma</i>	0
<i>Schoenus apogon</i>	4
<i>Schoenus brevifolius</i>	2
<i>Schoenus melanostachys</i>	2
<i>Schoenus turbinatus</i>	1
<i>Scirpus polystachyus</i>	2
<i>Scleranthus biflorus</i>	1
<i>Scleria mackaviensis</i>	2
<i>Scutellaria humilis</i>	1
<i>Secale cereale</i>	0
<i>Senecio daltonii</i>	1
<i>Senecio diaschides</i>	1
<i>Senecio hispidulus</i>	2
<i>Senecio lautus</i>	2
<i>Senecio quadridentatus</i>	0
<i>Senecio</i> sp. E	2
<i>Senna artemisioides</i>	4
<i>Setaria pumila</i>	0
<i>Setaria verticillata</i>	2
<i>Sigesbeckia australis</i>	2
<i>Silybum marianum</i>	1

<i>Smilax australis</i>	2
<i>Smilax glycyphylla</i>	2
<i>Solanum campanulatum</i>	2
<i>Solanum cinereum</i>	2
<i>Solanum cleistogamum</i>	0
<i>Solanum elegans</i>	2
<i>Solanum opacum</i>	2
<i>Solanum prinophyllum</i>	0
<i>Solenogyne bellioides</i>	2
<i>Solenogyne dominii</i>	1
<i>Sonchus asper</i>	1
<i>Sonchus oleraceus</i>	2
<i>Sorghum leiocladum</i>	0
<i>Sporobolus creber</i>	2
<i>Stackhousia monogyna</i>	2
<i>Stackhousia muricata</i>	1
<i>Stackhousia viminea</i>	2
<i>Stellaria media</i>	2
<i>Stylidium graminifolium</i>	2
<i>Stylidium laricifolium</i>	4
<i>Stypandra glauca</i>	4
<i>Styphelia perileuca</i>	0
<i>Styphelia triflora</i>	2
<i>Styphelia viridis</i>	2
<i>Swainsona galegifolia</i>	1
<i>Syzigium luehmannii</i>	1
<i>Taraxacum afficinale</i>	1
<i>Tasmannia glaucifolia</i>	1
<i>Tasmannia stipitata</i>	1
<i>Telopea aspera</i>	0
<i>Tetrarrhena juncea</i>	2
<i>Tetradlea thymifolia</i>	0
<i>Thanondia longifolia</i>	2
<i>Thelionema caespitosum</i>	1
<i>Thelionema grande</i>	6
<i>Thelymitra pauciflora</i>	2
<i>Themeda triandra</i>	2
<i>Thesium australe</i>	0
<i>Thysanotus tuberosus</i> subsp. <i>tuberosus</i>	2
<i>Trachymene incisa</i>	3
<i>Trachymene</i> sp. nov.	6
<i>Tricoryne elatior</i>	2
<i>Trifolium repens</i>	2
<i>Triodia scariosa</i>	4
<i>Tripogon loliiformis</i>	4
<i>Trochocarpa laurina</i>	1

<i>Trochocarpa</i> sp. A	2
<i>Urtica incisa</i>	2
<i>Velleia paradoxa</i>	5
<i>Verbascum thapsus</i>	1
<i>Verbena bonariensis</i>	1
<i>Verbena rigida</i>	1
<i>Veronica calycina</i>	2
<i>Vicia villosa</i>	0
<i>Viola betonicifolia</i>	1
<i>Viola hederacea</i>	2
<i>Vittadinia cuneata</i>	2
<i>Vittadinia dissecta</i>	2
<i>Vittadinia muelleri</i>	2
<i>Vittadinia sulcata</i>	2
<i>Vulpia bromoides</i>	0
<i>Wahlenbergia communis</i>	2
<i>Wahlenbergia gracilis</i>	2
<i>Wahlenbergia graniticola</i>	2
<i>Wahlenbergia luteola</i>	2
<i>Westringia eremicola</i>	4
<i>Westringia longifolia</i>	0
<i>Wurmbea biglandulosa</i>	2
<i>Xanthorrhoea acaulis</i>	2
<i>Xanthorrhoea glauca</i>	2
<i>Xanthorrhoea johnsonii</i>	2
<i>Xanthosia pilosa</i>	2
<i>Zieria arborescens</i>	0
<i>Zieria cytisoides</i>	5
<i>Zieria fraseri</i>	3
<i>Zieria laevigata</i>	3
<i>Zieria odorifera</i>	3

Community Descriptions

Surrounding (Virtual Sea) Vegetation Communities

These communities are defined based on the methods outlined in Chapter four and are based on the 123 adjacent vegetation ('sea') sites placed within the 21 'archipelagos'.

Element 1: Eastern New England Open Forests.

These communities are common along the eastern portion of the batholith usually at higher altitudes. Various eucalypt species may dominate but there is often a subordinate layer of *Banksia integrifolia* and or *Allocasuarina littoralis*. The communities mainly have a shrubby understory but occasionally this may be more open and sparse and a prominent grass and herb layer will be apparent. This situation commonly occurs in frequently burnt sites or those that have been logged.

Community 11a: *Banksia integrifolia* – *Eucalyptus dalrympleana* – *E. acaciiformis* Shrubby Open Forest.

Sample sites (6): BC1FA, BC1FB, CR1FA, CR1FB, CR 1FC, CR1FD.

Geology: Oban Leucoadamellite, Round Mountain Leucoadamellite.

Trees: *Banksia integrifolia* (83%), *Eucalyptus dalrympleana* (83%), *E. williamsiana* (50%), *E. acaciiformis* (67%), *E. nova-anglica* (50%), *E. caliginosa* (33%), *E. pauciflora* (17%), *Allocasuarina littoralis* (17%).

Shrubs: *Monotoca scoparia* (100%), *Brachyloma daphnoides* subsp. *glabrum* (100%), *Leucopogon lanceolatus* var. *lanceolatus* (100%), *Lomatia fraseri* (100%), *Polyscias sumbucifolius* (83%), *Melichrus urceolatus* (67%), *Dillwynia phyllicoides* (83%), *Derwentia arcuata* (83%), *Persoonia procumbens* (67%), *Platysace ericoides* (50%).

Herbs: *Poa sieberiana* (100%), *Lomandra longifolia* (100%), *Goodenia hederacea* (100%), *Gonocarpus teucroides* (67%), *Lomandra filiformis* subsp. *filiformis* (100%), *Pteridium esculentum* (83%), *Themeda triandra* (67%), *Galium ciliare* (50%), *Gonocarpus tetragynus* (33%), *Dichondra* sp. A (67%).

Restricted taxa: *Persoonia procumbens*, *Eucalyptus acaciiformis*, *Grevillea scortechinii* var. *sarmentosa*, *Acacia mitchellii*.

Threats and Conservation status: This community is reserved in Cathedral Rock National Park and Crown Mountain Forest Preserve. Grazing by cattle in the BC area is the only threat to this community.

Community flb: *Eucalyptus dalrympleana* – *Banksia integrifolia* – *Eucalyptus nova-anglica* Shrubby Open Forest.

Sample sites (4): BC1FC, BC1FD, BC1FE, BC1FF.

Geology: Oban River Leucoadamellite.

Trees: *Eucalyptus dalrympleana* (100%), *E. caliginosa* (50%), *Banksia integrifolia* (100%), *Eucalyptus nova-anglica* (100%), *E. pauciflora* (50%), *Allocasuarina littoralis* (25%).

Shrubs: *Leucopogon lanceolatus* var. *lanceolatus* (75%), *Rubus parvifolius* (75%), *Acacia filicifolia* (75%), *Monotoca scoparia* (75%), *Dillwynia phyllicoides* (75%), *Prostanthera saxicola* (100%), *Lomatia fraseri* (60%), *Acacia falciformis* (75%), *Solanum prinophyllum* (75%), *Bossiaea scortechinii* (50%).

Herbs: *Poa sieberiana* (100%), *Lomandra filiformis* subsp. *filiformis* (100%), *Poranthera microphylla* (100%), *Pteridium esculentum* (100%), *Hydrocotyle peduncularis* (100%), *Geranium solanderi* var. *solanderi* (100%), *Hydrocotyle geraniifolia* (100%), *Senecio* sp. E (100%), *Viola betonicifolia* (100%), *Opercularia hispida* (100%).

Restricted taxa: NA.

Threats and conservation status: This community is reserved in Crown Mountain Flora Preserve. Grazing by cattle is the only disturbance to this community.

Community flc: *Eucalyptus campanulata* – *Banksia integrifolia* – *Allocasuarina littoralis* Shrubby Open Forest.

Sample sites (14): BR1FA, BR1FB, BR1FC, BR1FD, BR1FE, BR1FF, BR1FG, BR1FH, BR1FI, BR1FJ, BR1FK, BR1FM, DM1FA, DM1FB.

Geology: Stanthorpe Leucoadamellite.

Trees: *Allocasuarina littoralis* (64%), *Eucalyptus campanulata* (71%), *Banksia integrifolia* (71%), *Eucalyptus caliginosa* (57%), *E. dalrympleana* (43%), *Allocasuarina torulosa* (7%), *Eucalyptus melliodora* (21%), *E. acaciiformis* (7%), *E. brunnea* (14%), *E. cameronii* (7%).

Shrubs: *Acacia filicifolia* (71%), *Hibbertia aspera* (79%), *Leucopogon lanceolatus* var. *lanceolatus* (86%), *Acacia falciformis* (36%), *Monotoca scoparia* (64%), *Platysace ericoides* (36%), *Hovea linearis* (29%), *Melichrus procumbens* (36%), *Bossiaea scortechinii* (43%), *Persoonia daphnoides* (36%).

Herbs: *Themeda triandra* (100%), *Poa sieberiana* (79%), *Imperata cylindrica* (79%), *Pteridium esculentum* (79%), *Gonocarpus teucroides* (93%), *Lomandra filiformis* subsp. *filiformis* (79%), *Opercularia hispida* (79%), *Dianella caerulea* var. *caerulea* (79%), *Pratia purpurascens* (79%), *Viola betonicifolia* (71%).

Restricted species: *Persoonia daphnoides*, *Kunzea bracteolata*, *Acacia adunca*, *Plectranthus suaveolens*, *Acacia orites*, *Acianthus exiguus*, *Acacia floydii*, *Eucalyptus scias* subsp. *apoda*.

Threats and conservation status: This community is reserved within Girraween, Bald Rock and Boonoo Boonoo National Park and Demon Nature Reserve. Logging has occurred in what is now Demon Nature Reserve and surrounding State Forests and is a potential threat to this community.

**Community fld: *Eucalyptus andrewsii* – *E. bridgesiana* – *Allocasuarina littoralis*
Shrubby Open Forest.**

Sample sites (7): CH1FA, CH1FB, CH1FC, GR1FE, JB1FA, JB1FB, JB1FE.

Geology: Chaelundi Complex – Granite, Dandahra Creek Granite, Billyrimba Leucoadamellite.

Trees: *Eucalyptus andrewsii* (43%), *E. bridgesiana* (43%), *Allocasuarina littoralis* (43%), *Eucalyptus caliginosa* (29%), *Elaeocarpus reticulatus* (14%), *Eucalyptus campanulata* (14%), *E. dalrympleana* (29%), *Banksia integrifolia* (14%).

Shrubs: *Leucopogon lanceolatus* var. *lanceolatus* (100%), *Acacia falciformis* (86%), *Lomatia silaifolia* (100%), *Hibbertia aspera* (86%), *Podolobium ilicifolium* (71%), *Polyscias sumbucifolius* (100%), *Bossiaea scortechinii*

(43%), *Platysace ericoides* (43%), *Acacia obtusifolia* (43%), *Hakea eriantha* (57%).

Herbs: *Poa sieberiana* (100%), *Gonocarpus tetragynus* (57%), *Dianella revoluta* (86%), *Lomandra longifolia* (86%), *Pteridium esculentum* (71%), *Viola betonicifolia* (57%), *Entolasia stricta* (100%), *Pratia purpurascens* (71%), *Themeda triandra* (71%), *Lepidosperma laterale* (71%).

Restricted species: *Olearia gravis*, *Brachyloma saxicola*.

Threats and conservation status: This community is reserved within Guy Fawkes and Gibraltar Range National Park. Logging has occurred at JB. Logging is a potential threat to this community.

Element 2: New England Blackbutt Shrubby Open Forests.

These communities occur in the central and western parts of the batholith. *Eucalyptus andrewsii* is a common dominant. They are more open and not as tall as the communities within element 1 but are not as open as those in elements 4 to 6. A diverse shrubs layer is a major component. In the drier parts, this community may have a layered woodland appearance with *Allocasuarina inophloia*.

Community f2a: *Eucalyptus andrewsii* – *E. dealbata* – *E. melliodora* Shrubby Open Forest.

Sample sites (11): BH1FA, BH1FB, BH1FC, BH1FD, BR1FL, EC1FA, EC1FB, EC1FC, EC1FD, EC1FE, TT1FC.

Geology: Bolivia Range Leucoadamellite, Stanthorpe Adamellite, Mount Mackenzie Adamellite, Mole Granite.

Trees: *Eucalyptus andrewsii* (73%), *E. dealbata* (27%), *E. melliodora* (27%), *E. bridgesiana* (27%), *Allocasuarina littoralis* (18%), *Angophora floribunda* (18%), *Eucalyptus caliginosa* (36%), *E. dalrympleana* (18%), *E. albens* (9%), *E. subillior* (18%).

Shrubs: *Melichrus urceolatus* (82%), *Acacia fimbriata* (64%), *Hibbertia obtusifolia* (73%), *Monotoca scoparia* (82%), *Acacia filicifolia* (45%), *Cassinia quinquefaria* (45%), *Lomatia silaifolia* (55%), *Maytenus silvestris* (36%), *Hovea linearis* (45%), *Aotus subglauc* (45%).

Herbs: *Pratia purpurascens* (91%), *Imperata cylindrica* (91%), *Gahnia aspera* (82%), *Entolasia stricta* (73%), *Paspalidium constrictum* (55%), *Echinopogon caespitosus* (45%), *Lepidosperma laterale* (82%), *Poa sieberiana* (64%), *Gonocarpus tetragynus* (64%), *Pteridium esculentum* (45%).

Restricted species: *Acacia adunca*, *Eucalyptus subtilior*, *Acacia macnuttiana*, *Bertya glandulosa*, *Callistemon flavovirens*.

Threats and conservation status: This community is not reserved. Grazing by cattle is a threat to this community.

Community f2b: *Eucalyptus andrewsii* – *E. albens* - *E. youmanii* Shrubby Open Forest.

Sample sites (7): PM1FA, PM1FB, PM1FC, PM1FD, PM1FE, TT1FA, TT1FB.

Geology: Parlour Mountain Leucoadamellite (some parts porphyritic), Mole Granite.

Trees: *Eucalyptus andrewsii* (71%), *E. youmanii* (43%), *Allocasuarina littoralis* (14%), *E. melliodora* (29%), *E. caliginosa* (14%), *E. albens* (57%), *E. banksii* (43%), *E. dalrympleana* (14%), *Banksia integrifolia* (14%), *Eucalyptus brunnea* (14%).

Shrubs: *Hibbertia obtusifolia* (100%), *Leucopogon meleleuoides* (100%), *Monotoca scoparia* (100%), *Persoonia cornifolia* (57%), *Leucopogon lanceolatus* var. *lanceolatus* (86%), *Acacia buxifolia* (57%), *Brachyloma daphnoides* subsp. *glabrum* (100%), *Melichrus urceolatus* (43%), *Aotus subglaucula* (43%), *Leucopogon muticus* (29%).

Herbs: *Goodenia hederacea* (100%), *Opercularia hispida* (100%), *Paspalidium constrictum* (100%), *Gonocarpus tetragynus* (71%), *Pteridium esculentum* (86%), *Patersonia sericea* (71%), *Imperata cylindrica* (71%), *Aristida jerichoensis* (71%), *Austrodanthonia induta* (43%), *Caustis flexuosa* (71%).

Restricted species: *Acacia betchei*, *A. macnuttiana*, *Callistemon pungens*, *Brachyloma saxicola*.

Threats and conservation status: This community is reserved in the Torrington State Recreation Area. Grazing by cattle is the main threat to this community.

Community f2c: *Eucalyptus andrewsii* – *Allocasuarina inophloia* – *Eucalyptus dealbata* Shrubby Layered Woodland.

Sample sites (7): KP1FD, SR1FD, SR1FF, TT1FD, TT1FF, TT1FF, WW1FA.

Geology: Undifferentiated.

Trees: *Eucalyptus andrewsii* (57%), *Allocasuarina inophloia* (57%), *Eucalyptus dealbata* (57%), *E. crebra* (43%), *Callitris endlicheri* (14%), *Eucalyptus macrorhyncha* (14%), *E. banksii* (14%), *E. exserta* (14%), *E. subillior* (29%), *E. prava* (29%).

Shrubs: *Aotus subglauca* (71%), *Monotoca scoparia* (100%), *Brachyloma daphnoides* subsp. *glabrum* (86%), *Dillwynia phyllicoides* (57%), *Pultenaea* sp. C (57%), *Hibbertia riparia* (57%), *Petrophile canescens* (43%), *Platysace ericoides* (71%), *Melichrus urceolatus* (71%), *Acacia buxifolia* (57%).

Herbs: *Patersonia sericea* (86%), *Entolasia stricta* (71%), *Goodenia hederacea* (86%), *Caustis flexuosa* (43%), *Lomandra multiflora* (71%), *Xanthorrhoea johnsonii* (71%), *Dianella caerulea* var. *caerulea* (43%), *Lomandra filiformis* subsp. *filiformis* (57%), *Aristida jerichoensis* (43%), *Poa sieberiana* (43%).

Restricted species: *Pultenaea stuartiana*, *Acacia torringtonensis*, *Hibbertia* sp. B, *Bertya cunninghamii*, *Boronia granitica*, *Persoonia terminalis* subsp. *terminalis*, *Acacia betchei*, *Eucalyptus exserta*, *E. subillior*, *Homoranthus biflorus*, *Dodonaea hirsuta*, *Acacia williamsiana*, *Allocasuarina brachystachya*, *Astrotricha roddii*, *Callistemon pungens*, *Zieria odorifera*, *Melichrus erubescens*.

Threats and conservation status: This community is reserved within Kings Plains National Park, Severn River Nature Reserve and Topping State Recreation Area. Goats are a threat to this community.

Element 3: Escarpment Shrubby Open Forests.

These communities occur on the eastern margin of the batholith. The overstory is usually of *Eucalyptus andrewsii* or *E. cameronii* and usually has a prominent shrubby understory. Often a sub-layer of *Allocasuarina littoralis* is present. Many taxa normally

found on the coastal ranges will occur, for example *Acacia suaveolens*, *Hibbertia cistoidea* and *H. scandens*.

Community f3a: *Eucalyptus andrewsii* – *Allocasuarina littoralis* – *Eucalyptus campanulata* Shrubby Open Forest.

Sample sites (3): DM1FC, JB1FC, JB1FD.

Geology: Stanthorpe Adamellite, Billyrimba Leucoadamellite.

Trees: *Eucalyptus andrewsii* (67%), *Allocasuarina littoralis* (33%), *Eucalyptus campanulata* (33%),

Shrubs: *Dampiera stricta* (100%), *Platysace ericoides* (100%), *Monotoca scoparia* (100%), *Petrophile canescens* (100%), *Banksia spinulosa* var. *collina* (100%), *Bossiaea scortechinii* (67%), *Podolobium ilicifolium* (100%), *Pimelea linifolia* (67%), *Lomatia silaifolia* (67%), *Acacia ulicifolia* (100%).

Herbs: *Entolasia stricta* (100%), *Lomandra filiformis* subsp. *filiformis* (100%), *Pteridium esculentum* (100%), *Aristida jerichoensis* (100%), *Stylidium graminifolium* (100%), *Lepidosperma laterale* (100%), *Goodenia bellidifolia* subsp. *argentea* (100%), *Patersonia glabrata* (67%), *P. sericea* (67%).

Restricted species: *Pultenaea pycnocephala* (33%), *Persoonia rufa* (67%), *Hibbertia aspera* (67%), *Acianthus apprimus* (33%),

Threats and conservation status: This community is reserved in Demon Nature Reserve. Logging has occurred both at DM and JB and is a threat to this community.

Community f3b: *Eucalyptus cameronii* – *E. notabilis* – *E. caliginosa* – *E. ligustrina* Shrubby Open Forest.

Sample sites (8): GR1FB, GR1FC, GR1FD, GR1FF, GR1FG, GR1FH, GR1FI, GR1FJ.

Geology: Dandahra Creek Granite.

Trees: *Eucalyptus cameronii* (75%), *E. notabilis* (25%), *E. caliginosa* (25%), *E. ligustrina* (25%), *E. campanulata* (25%), *E. williamsiana* (25%), *Allocasuarina littoralis* (13%), *Eucalyptus radiata* (13%).

Shrubs: *Platysace ericoides* (100%), *Petrophile canescens* (100%), *Leptospermum trinervium* (88%), *Hakea dactyloides* (100%), *Bossiaea neo-anglica* (88%), *Monotoca scoparia* (100%), *Persoonia rufa* (100%), *Banksia*

spinulosa var. *collina* (100%), *Acacia ulicifolia* (88%), *Dillwynia phyllicoides* (75%).

Herbs: *Caustis flexuosa* (88%), *Xanthorrhoea glauca* (100%), *Patersonia glabrata* (100%), *Lepidosperma laterale* (75%), *Lepidosperma neesii* (50%), *Themeda triandra* (50%), *Goodenia hederacea* (38%), *Poa sieberiana* (25%), *Aristida ramosa* (38%), *Patersonia sericea* (63%).

Restricted species: *Persoonia rufa*, *Acacia mitchellii*, *Mirbelia confertiflora*, *Pultenaea pycnocephala*, *Telopea aspera*, *Hibbertia villosa*, *Grevillea acerata*, *Conospermum burgessiorum*, *Kunzea bracteolata*, *Acacia barringtonensis*.

Threats and conservation status: This community is reserved within Gibraltar Range National Park.

Element 4: Western New England Layered Woodlands.

These communities are widespread throughout the western parts of the batholith. They are predominantly layered woodlands with a *Callitris endlicheri* component. Often they have a sparse shrubby understory and a diverse grass and herb layer. Occasionally shrubs will be rare and a grassy woodland structure is apparent. The ironbark *Eucalyptus caleyi* is common as a co-dominant particularly in rocky areas. *Angophora floribunda* is prominent along with the low smooth barked trees *Eucalyptus dealbata* and *E. prava*. In the IB and WB areas *Eucalyptus quinniorum* is often abundant giving a mallee woodland structure.

Community f4a: *Eucalyptus melliodora* - *Angophora floribunda* – *Callitris endlicheri* Grassy Woodland.

Sample sites (3): BH1FE, FR1FA, IB1FE.

Geology: Bolivia Range Leucoadamellite, Tilmunda Adamellite, (undifferentiated) Leucoadamellite.

Trees: *Angophora floribunda* (67%), *Callitris endlicheri* (67%), *Eucalyptus blakelyi* (67%), *E. bridgesiana* (67%), *E. melliodora* (100%), *E. prava* (67%), *E. dalrympleana* (33%).

Shrubs: *Brachyloma daphnoides* subsp. *glabrum* (100%), *Hibbertia obtusifolia* (100%), *Melichrus urceolatus* (100%), *Lissanthe strigosa* (100%), *Dodonaea viscosa* (33%), *Leucopogon muticus* (67%), *Aotus subglauca* (33%),

Leptospermum variabile (33%), *Leucopogon melaleucoides* (67%), *Pultenaea* sp. G (33%).

Herbs: *Aristida jerichoensis* (100%), *Cymbopogon refractus* (100%), *Lomandra longifolia* (100%), *Themeda triandra* (67%), *Cheilanthes sieberi* subsp. *sieberi* (100%), *Dianella caerulea* var. *caerulea* (67%), *Geranium solanderi* var. *solanderi* (67%), *Dichondra repens* (67%), *Echinopogon caespitosus* (67%), *Microlaena stipoides* (67%).

Restricted species: *Thesium australe*, *Pultenaea* sp. B.

Threats and conservation status: This community is within a private reserve within the IB area.

**Community f4b: *Eucalyptus youmanii* – *Angophora floribunda* – *Callitris endlicheri*
Layered Woodland.**

Sample sites (13): BH1FF, EC1FF, FR1FB, FR1FC, FR1FD, FR1FE, MB1FA, MB1FB, WB1FA, WB1FB, WB1FC, WB1FD, WB1FE.

Geology: Bolivia Range Leucoadamellite, Tilmunda Adamellite, Moonbi Adamellite, (undifferentiated) Leucoadamellite.

Trees: *Callitris endlicheri* (62%), *Eucalyptus youmanii* (69%), *Angophora floribunda* (69%), *Eucalyptus andrewsii* (38%), *E. dealbata* (54%), *E. quinniorum* (15%), *E. melliodora* (46%), *E. albens* (23%), *E. blakeyli* (15%), *E. prava* (8%).

Shrubs: *Hibbertia obtusifolia* (100%), *Melichrus urceolatus* (92%), *Cassinia quinquefaria* (46%), *Brachyloma daphnoides* subsp. *glabrum* (54%), *Olearia elliptica* (62%), *Persoonia cornifolia* (62%), *Swainsona galegifolia* (38%), *Acacia neriifolia* (38%), *Leucopogon muticus* (31%), *Lissanthe strigosa* (23%).

Herbs: *Aristida vagans* (69%), *Geranium solanderi* var. *solanderi* (92%), *Aristida ramosa* (54%), *Cymbopogon refractus* (85%), *Cheilanthes sieberi* subsp. *sieberi* (69%), *Lomandra multiflora* (77%), *Oxalis chnoodes* (85%), *Dichondra* sp. A (46%), *Plantago debilis* (77%), *Austrodanthonia racemosa* (38%).

Restricted species: *E. malacoxylon*, *E. subtilior*.

Threats and conservation status: This community is reserved within Warrabah National Park and a private reserve at FR.

Community f4c: *Callitris endlicheri* – *Eucalyptus prava* – *E. caleyi* Layered Woodland.

Sample sites (4): IB1FA, IB1FB, IB1FC, IB1FD.

Geology: (undifferentiated) Leucoadamellite.

Trees: *Callitris endlicheri* (100%), *Eucalyptus prava* (100%), *E. caleyi* (100%), *E. andrewsii* (100%), *E. macrorhyncha* (75%), *E. dealbata* (25%), *Angophora floribunda* (50%), *Acacia cheelii* (25%), *Eucalyptus quinniorum* (25%),

Shrubs: *Brachyloma daphnoides* subsp. *glabrum* (100%), *Macrozamia heteromera* (100%), *Pultenaea* sp. G (100%), *Acacia neriifolia* (100%), *Leucopogon muticus* (100%), *Hibbertia obtusifolia* (100%), *Olearia elliptica* (100%), *Cassinia quinquefaria* (100%), *Olearia viscidula* (100%), *Lissanthe strigosa* (100%)

Herbs: *Deyeuxia mckiei* (100%), *Galium propinquum* (100%), *Lepidosperma laterale* (100%), *Geranium solanderi* var. *solanderi* (100%), *Dianella revoluta* (100%), *Luzula flaccida* (100%), *Lomandra multiflora* (100%), *Cheilanthes sieberi* subsp. *sieberi* (100%), *Pomax umbellata* (100%), *Pterostylis coccinea* (75%).

Restricted species: *Macrozamia heteromera*, *Pultenaea* sp. G, *Eucalyptus quinniorum*.

Threats and conservation status: This community is reserved within Ironbark Nature Reserve and an adjoining private reserve.

Community f4d: *Callitris endlicheri* – *Angophora floribunda* - *Eucalyptus dealbata* Layered Woodland.

Sample sites (6): HC1FA, HC1FB, HC1FC, HC1FD, HC1FE, HC1FF.

Geology: Gilgai Granite.

Trees: *Callitris endlicheri* (100%), *Acacia neriifolia* (67%), *Eucalyptus dealbata* (83%), *Angophora floribunda* (100%), *Eucalyptus prava* (67%), *E. youmanii* (50%), *E. caleyi* (50%), *E. nova-anglica* (17%), *E. sideroxylon* (33%), *E. banksii*.

Shrubs: *Leucopogon melaleucoides* (100%), *L. muticus* (100%), *Cassinia laevis* (100%), *Brachyloma daphnoides* subsp. *glabrum* (100%), *Acacia falciformis* (67%), *Persoonia cornifolia* (100%), *Melichrus urceolatus* (83%),

Stackhousia viminea (50%), *Hibbertia obtusifolia* (67%), *Leptospermum brachyandrum* (33%).

Herbs: *Pomax umbellata* (100%), *Aristida jerichoensis* (100%), *Cheilanthes sieberi* subsp. *sieberi* (100%), *Lepidosperma laterale* (83%), *Eragrostis brownii* (50%), *Themeda triandra* (67%), *Gahnia aspera* (67%), *Goodenia hederacea* (67%), *Paspalidium constrictum* (67%), *Poa sieberiana* (50%).

Restricted species: *Zieria odorifera*.

Threats and conservation status: This community was unreserved. Goat grazing is a threat to this community.

Community f4e: *Eucalyptus crebra* – *E. dealbata* – *Callitris endlicheri* Layered Woodland.

Sample sites (5): SR1FA, SR1FB, SR1FC, SR1FE, WW1FB.

Geology: Undifferentiated.

Trees: *Eucalyptus crebra* (100%), *Acacia neriifolia* (60%), *Eucalyptus dealbata* (80%), *Callitris endlicheri* (80%), *Eucalyptus macrorhyncha* (60%), *E. prava* (60%), *Angophora floribunda* (20%), *Allocasuarina inophloia* (40%).

Shrubs: *Olearia elliptica* (80%), *Leucopogon melaleucooides* (80%), *Melichrus urceolatus* (80%), *Leucopogon muticus* (100%), *Hibbertia obtusifolia* (80%), *Leptospermum brevipes* (80%), *Lissanthe strigosa* (40%), *Acacia penninervis* (60%), *Brachyloma daphnoides* subsp. *glabrum* (80%), *Styphelia triflora* (40%).

Herbs: *Aristida jerichoensis* (100%), *Lomandra multiflora* (80%), *Cheilanthes sieberi* subsp. *sieberi* (100%), *Arundinella nepalensis* (60%), *Pterostylis parviflora* (60%), *Aristida vagans* (80%), *Austrodanthonia racemosa* (80%), *Pratia purpurascens* (60%), *Cymbopogon refractus* (80%), *Lomandra filiformis* subsp. *filiformis* (40%).

Restricted species: *Acacia macnuttiana*.

Threats and conservation status: This community is reserved within the Severn River Nature Reserve.

Community f4f: *Eucalyptus crebra* – *E. melliodora* – *E. dealbata* Shrubby Woodland.

Sample sites (5): KP1FA, KP1FB, KP1FC, KP1FE, KP1FF.

Geology: Undifferentiated.

Trees: *Acacia neriifolia* (60%), *Eucalyptus crebra* (80%), *E. melliodora* (60%), *E. dealbata* (60%), *E. mckieana* (20%), *E. banksii* (20%), *E. albens* (20%), *E. caleyi* (20%), *E. prava* (20%), *Allocasuarina inophloia* (20%).

Shrubs: *Acacia buxifolia* (80%), *Melichrus urceolatus* (100%), *Lissanthe strigosa* (100%), *Pultenaea foliolosa* (40%), *Stackhousia viminea* (80%), *Styphelia triflora* (100%), *Leptospermum brevipes* (80%), *Monotoca scoparia* (100%), *Leucopogon muticus* (80%), *Dillwynia sieberi* (40%).

Herbs: *Opercularia aspera* (100%), *Wahlenbergia luteola* (100%), *Brachycome microcarpa* (100%), *Echinopogon caespitosus* (100%), *Cheilanthes sieberi* subsp. *sieberi* (100%), *Cymbopogon refractus* (100%), *Goodenia bellidifolia* (80%), *Lomandra multiflora* (100%), *Aristida ramosa* (60%), *Danthonia monticola* (80%).

Restricted species: *Eucalyptus mckieana*, *Hibbertia* sp. B.

Threats and conservation status: This community is reserved within Kings Plains National Park.

Element 5: Far Western New England Grassy Woodlands.

These communities occurred along the western portion of the batholith at KL, MB and YH. This community has a predominantly grassy understory but will often also have a sparse shrub component. *Callitris endlicheri* and *Brachychiton populneus* often form a subsequent layer giving a layered woodland structure.

Community f5a: *Eucalyptus caleyi* – *Corymbia dolichocarpa* – *Callitris glaucophylla* Grassy Woodland.

Sample sites (7): KL1FA, KL1FB, KL1FC, KL1FD, KL1FE, KL1FF.

Geology: (undifferentiated) Granite.

Trees: *Callitris glaucophylla* (57%), *C. endlicheri* (43%), *Eucalyptus caleyi* (71%), *E. dealbata* (57%), *Corymbia dolichocarpa* (71%), *Eucalyptus prava* (43%), *Alphitona excelsa* (43%), *Brachychiton populneus* (14%).

Shrubs: *Melichrus urceolatus* (100%), *Leptospermum brevipes* (100%), *Calytrix tetragona* (57%), *Hibbertia obtusifolia* (86%), *Acacia leiocalyx*

(57%), *Notelaea linearis* (43%), *Olearia elliptica* (29%), *Desmodium brachypodum* (43%), *Astrotricha roddii* (57%), *Olearia gravis* (29%).

Herbs: *Cheilanthes sieberi* subsp. *sieberi* (100%), *Aristida ramosa* (86%), *Aristida vagans* (86%), *Cheilanthes distans* (100%), *Cyperus gracilis* (100%), *Cymbopogon refractus* (86%), *Scleria mackaviensis* (100%), *Vittadinia sulcata* (57%), *Lomandra longifolia* (100%), *Calotis hispidula* (100%).

Restricted species: *Astrotricha roddii*, *Olearia gravis*, *Acacia williamsiana*.

Threats and conservation status: This community is reserved within Kwiambal National Park. Logging has occurred in the Severn State Forest within the KL area and this is a threat to this community along with goat grazing.

Community f5b: *Eucalyptus youmanii* – *Brachychiton populneus* – *Callitris endlicheri* Layered Woodland.

Sample sites (10): MB1FC, MB1FD, MB1FE, MB1FF, WB1FF, YH1FA, YH1FB, YH1FC, YH1FD, YH1FE.

Geology: Moonbi Adamellite, Yarrowyck Granodiorite.

Trees: *Callitris endlicheri* (50%), *Eucalyptus youmanii* (60%), *E. dealbata* (40%), *Brachychiton populneus* (60%), *Eucalyptus albens* (20%), *E. melliodora* (30%), *E. blakelyi* (30%), *E. prava* (20%), *Angophora floribunda* (30%), *Acacia leptoclada* (10%).

Shrubs: *Hibbertia obtusifolia* (70%), *Dodonaea viscosa* (70%), *Leptospermum brevipes* (30%), *Bursaria spinosa* (40%), *Cassinia laevis* (40%), *C. quinquefaria* (40%), *Desmodium brachypodum* (30%), *Pimelea linifolia* (30%), *Melichrus urceolatus* (50%), *Notelaea microcarpa* (40%).

Herbs: *Cheilanthes sieberi* subsp. *sieberi* (100%), *Aristida ramosa* (90%), *Chrysocephalum semipapposum* (100%), *Dichondra* sp. A (100%), *Crassula sieberiana* (100%), *Geranium solanderi* var. *solanderi* (90%), *Arthropodium milleflorum* (100%), *Oxalis exilis* (50%), *Solenogyne bellioides* (40%), *Ranunculus sessiliflorus* (70%).

Restricted species: NA

Threats and conservation status: This community is reserved within Mount Yarrowyck Nature Reserve.

Element 6: Willows Grassy Woodland.

This community was restricted to the WW area. The understory is very grassy with a minor occurrence of shrubs along creek lines and on shallower soils. *Eucalyptus bridgesiana* appears to be the major overstory species with occasionally a subdominant layer of *Allocasuarina inophloia* or *Acacia leptoclada* forming a layered grassy woodland.

Community f6a: *Eucalyptus bridgesiana* – *E. crebra* Grassy Woodland.

Sample sites (3): WW1FC, WW1FD, WW1FE.

Geology: Undifferentiated.

Trees: *Eucalyptus crebra* (33%), *E. bridgesiana* (67%), *Acacia leptoclada* (33%), *Allocasuarina inophloia* (33%).

Shrubs: *Pimelea linifolia* (67%), *Leptospermum polygalifolium* (33%), *Cassinia laevis* (67%), *Rubus parvifolius* (33%), *Callistemon pungens* (33%).

Herbs: *Eragrostis elongata* (100%), *Stipa setacea* (67%), *Vittadinia muelleri* (67%), *Chloris truncata* (67%), *Danthonia racemosa* (67%), *Digitaria breviglumis* (33%), *Plantago varia* (33%), *Danthonia penicillata* (33%), *Juncus firmus* (33%), *Aristida jerichoensis* (33%).

Restricted species: *Callistemon pungens*.

Threats and conservation status: This community is unreserved.

Species found during this survey, their status, distribution within communities, recognised authorities and conservation codes.

Family	Taxon	Status	ROTAP	Community
Acanthaceae	<i>Brunoniella australis</i> (Cav.) Bremek.	Native		f4e, f5a
Acanthaceae	<i>Rostellularia adscendens</i> (R.Br.) R.M.Barker	Native		8a, f2c, f4e
Adiantaceae	<i>Adiantum aethiopicum</i> L.	Native		f1c, f2a, f3a, f4e
Adiantaceae	<i>Adiantum hispidulum</i> Sw.	Native		f1c
Amaranthaceae	<i>Alternanthera denticulata</i> R.Br.	Native		8a
Amaranthaceae	<i>Alternanthera</i> sp. A	Native		f6a
Anthericaceae	<i>Arthropodium milleflorum</i> (DC.) J.F.Macbr.	Native		1a, 1c, 4a, 4b, 6a, 6b, 7a, 7c, 7d, 7f, 7g, 7h, 8a, 9a, 9b, f1b, f4a, f4b, f4c, f4e, f4f, f5a, f5b,
Anthericaceae	<i>Arthropodium minus</i> R.Br.	Native		7c
Anthericaceae	<i>Caesia calliantha</i> R.J.F.Hend.	Native		9a
Anthericaceae	<i>Caesia parviflora</i> R.Br.	Native		f5a
Anthericaceae	<i>Dichopogon fimbriatus</i> (R.Br.) J.F.Macbr.	Native		7a, 7c, 7g, 9a, 9b, f4b, f4d, f5b
Anthericaceae	<i>Laxmannia compacta</i> Conran & P.I.Forst.	Native		1b, 1c, 2b, 2d, 2e, 2f, 3a, 4a, 4b, 5a, 5b, 7a, 7c, 7d, 7e, 7f, 7g, 7h, 9a, f3b
Anthericaceae	<i>Laxmannia gracilis</i> R.Br.	Native		1c, 2e, 3a, 9a, f2c, f4d
Anthericaceae	<i>Thysanotus tuberosus</i> R.Br. subsp. <i>tuberosus</i>	Native		2d, f3a
Anthericaceae	<i>Tricoryne elatior</i> R.Br.	Native		1c, 5a, 7c, 8a, f1c, f2a, f2b, f4d, f5a, f6a
Apiaceae	<i>Actinotus gibbonsii</i> F.Muell.	Native		1a, 1b, 2a, 2d, 2e, 7a, 7e, 7g, 9a, 9b
Apiaceae	<i>Actinotus helianthi</i> Labill.	Native		2d, 2f, 4b, 5b, 7a, 7c, 7e, 8a, 9a, 9b, f2a, f4d
Apiaceae	<i>Hydrocotyle geraniifolia</i> F.Muell.	Native		2d, f1b
Apiaceae	<i>Hydrocotyle laxiflora</i> DC.	Native		f4a
Apiaceae	<i>Hydrocotyle peduncularis</i> R.Br. ex A.Rich.	Native		2d, 6a, 7a, 7c, 7e, 7f, 7g, 8a, 9a, f1b, f1d, f2a, f2b, f4a, f4b, f4c, f5a, f6a
Apiaceae	<i>Hydrocotyle tripartita</i> R.Br. ex A.Rich.	Native		7a, f4f
Apiaceae	<i>Oreomyrrhis eriopoda</i> (DC.) Hook.f.	Native		f1b
Apiaceae	<i>Platysace ericoides</i> (Sieber ex Spreng.) C.Norman	Native		2a, 2d, 2e, 2f, 3a, 4a, 5a, 5b, f1a, f1c, f1d, f2b, f2c, f3a, f3b, f4f
Apiaceae	<i>Platysace lanceolata</i> (Labill.) Druce	Native		1a, 1b, 1c, 2a, 2b, 2c, f1a, f1d
Apiaceae	<i>Trachymene incisa</i> Rudge	Native		1a, 1b, 1c, 2a, 2b, 2c, 2d, 2e, 2f, 3a, 4a, 4b, 4c, 5a, 5b, 6b, 7a, 7b, 7e, 7f, 7g, 7h, 8a, 9a, 9b, f1c, f2a, f3b, f4b, f4f
Apiaceae	<i>Trachymene</i> sp. nov.	Native	RK	1a, 1b, 1c, 2a, 2c, 4a

Apiaceae	<i>Xanthosia pilosa</i> Rudge	Native		2e, fl d, f3b
Apocynaceae	<i>Parsonsia eucalyptophylla</i> F.Muell.	Native		f4d
Araliaceae	<i>Astrotricha longifolia</i> Benth.	Native		1b, 2a, 2b, fl c, f2c, f2a
Araliaceae	<i>Astrotricha roddii</i> Makinson	Native	3VCa	5a, 5b, 7d, 8a, f2c, f5a
Araliaceae	<i>Polyscias sumbucifolius</i> (Sieber ex DC.) Harms	Native		1a, 1b, 2a, 2c, fl a, fl c, fl d, f3a
Asclepiadaceae	<i>Gomphocarpus fruticosus</i> (L.) R.Br. ex Spreng.	Introduced		7g
Asclepiadaceae	<i>Marsdenia rostrata</i> R.Br.	Native		2d, f5a
Asphodelaceae	<i>Bulbine semibarbata</i> (R.Br.) Haw	Native		6b, 7a
Aspleniaceae	<i>Asplenium flavellifolium</i> Cav.	Native		1a, 1b, 1c, 2a, 2b, 2d, 2f, 4c, 5a, 7f, 7g, 7h, fl a, fl c, f4b
Aspleniaceae	<i>Pleurosorus subglandulosus</i> (Hook. & Grev.) Tindale	Native		6b, 7a, 7d, 7f, 7g, 8a, 9a, f4d, f5a
Asteraceae	<i>Actinobole uliginosum</i> (A.Gray) H.Eichler	Native		7g, f5b
Asteraceae	<i>Arctotheca calendula</i> (L.) Levyns	Introduced		f5b
Asteraceae	<i>Bidens pilosa</i> L.	Introduced		6a, 6b, 8a, 9b, f4b, f4f
Asteraceae	<i>Bidens subalternans</i> DC.	Introduced		6a, 7g, f4d, f4e, f5b
Asteraceae	<i>Brachycome dissectifolia</i> G.L.R.Davis	Native		f4d
Asteraceae	<i>Brachycome microcarpa</i> F.Muell.	Native		1a, f4f, f5a
Asteraceae	<i>Brachycome multifida</i> DC.	Native		7g, f5b
Asteraceae	<i>Brachycome nova-anglica</i> G.L.R.Davis	Native		fl a, fl b, f2a, f2b, f3b, f4b, f4e
Asteraceae	<i>Brachycome scapigera</i> (Sieber ex Spreng.) DC.	Native		fl b
Asteraceae	<i>Brachycome stuartii</i> Benth.	Native		1a, 1b, 1c, 2a, 2b, 2c, 2d, 2e, 2f, 3a, 4a, 4b, 5a, 5b, 6b, 7a, 7c, 7e, 7f, 7g, 8a, 9a, 9b, fl c, f2c
Asteraceae	<i>Brachycome tenuiscapa</i> Hook.f.	Native		fl b
Asteraceae	<i>Bracteantha bracteatum</i> (Vent.) Anderb. & Haegi	Native		fl c
Asteraceae	<i>Calotis cuneifolia</i> R.Br.	Native		6a, 7c, 7g, fl a, f4a, f4e, f5b
Asteraceae	<i>Calotis dentex</i> R.Br.	Native		f2a, f4a
Asteraceae	<i>Calotis hispidula</i> (F.Muell.) F.Muell.	Native		8a, f2b, f5a
Asteraceae	<i>Calotis lappulaceae</i> Benth.	Native		6a, 6b, f5b
Asteraceae	<i>Carduus tenuiflorus</i> S.Curtis	Introduced		1a, 6b, fl b, fl c, f4a
Asteraceae	<i>Cassinia aculeata</i> (Labill.) R.Br.	Native		2d, 7a
Asteraceae	<i>Cassinia laevis</i> R.Br.	Native		1b, 2b, 6a, 7c, 7d, 7g, 9a, 9b, f4b, f4d, f4e, f5b, f6a
Asteraceae	<i>Cassinia quinquefaria</i> R.Br.	Native		2f, 4b, 7a, 7c, 7e, 7f, 7g, 7h, 9a, f2a, f2c, f4a, f4b, f4c, f4e, f5b
Asteraceae	<i>Cassinia uncata</i> A.Cunn. ex DC.	Native		2d, 2e, 4b, 6a, 6b, 7d, 7g, 7h, fl c, f2a, f4a, f4b, f4f, f5a
Asteraceae	<i>Chrysocephalum apiculatum</i> (Labill.) Steetz	Native		2d, 7e, 7f, 7g, fl a, fl c, fl d, f2a, f4a, 4fb, f4c
Asteraceae	<i>Chrysocephalum semipapposum</i> (Labill.) Steetz.	Native		6b, 7g, 9b, fl a, fl c, f4a, f4b, f4d, f5b

Asteraceae	<i>Cirsium vulgare</i> (Savi) Ten.	Introduced		f2b, f6a
Asteraceae	<i>Conyza albida</i> Spreng.	Introduced		1a, 7a, 7f, f2a, f4a
Asteraceae	<i>Conyza bonariensis</i> (L.) Cronquist	Introduced		2d, 2e, 2f, 4b, 7g, 9b, f4f, f5b
Asteraceae	<i>Cotula australis</i> (Sieber ex Spreng.) Hook.f.	Native		9b
Asteraceae	<i>Craspedia variabilis</i> J.Everett & Doust.	Native		f1b, f2a, f4f
Asteraceae	<i>Cymbonotus lawsonianus</i> Gaudich.	Native		7g, f5b, f6a
Asteraceae	<i>Dimorphotheca pluvialis</i> (L.) Moench	Introduced		6b
Asteraceae	<i>Epaltes australis</i> Less.	Native		f6a
Asteraceae	<i>Euchiton involucratu</i> s (G.Forst.) Holub	Native		2f, 7a, 7f, 7g, f1c, f2a, f4a, f4b, f4c
Asteraceae	<i>Euchiton sphaericus</i> (Willd.) Holub	Native		1a, 1c, 3a, 4b, 6a, 7e, 7g, 9a, f1a, f1b, f2a, f2b, f4a, f4d, f4f, f6a
Asteraceae	<i>Glossogyne tannensis</i> (Spreng.) Garn.-Jones	Native		f5a
Asteraceae	<i>Gnaphalium americanum</i> Mill.	Introduced		2d, 2f, f1b, f1c, f2b
Asteraceae	<i>Helichrysum boormanii</i> Maiden & Betche	Native		2a
Asteraceae	<i>Helichrysum elatum</i> A.Cunn. ex DC.	Native		1b, 2a, 2d, 4a
Asteraceae	<i>Helichrysum scorpioides</i> Labill.	Native		f1c, f2b, f4a
Asteraceae	<i>Hypochaeris glabra</i> L.	Introduced		6b
Asteraceae	<i>Hypochaeris radicata</i> L.	Introduced		1a, 1b, 1c, 2c, 2d, 2e, 2f, 3a, 4a, 4b, 4c, 5a, 6b, 7a, 7b, 7c, 7d, 7f, 7g, 7h, 8a, 9a, 9b, f1a, f1b, f1c, f1d, f2a, f2b, f4a, f4b, f4c, f4d, f4f, f5a, 2a, f1c
Asteraceae	<i>Lagenifera gracilis</i> Steetz	Native		7e, 7g, f2a, f4b, f4e
Asteraceae	<i>Lagenifera stipitata</i> (Labill.) Druce	Native		2e, 6b, 7c, 7d, 7e, 7g, 9b, f2b, f4b, f4c, f4d, f4e, f5a, f5b
Asteraceae	<i>Olearia elliptica</i> DC.	Native		7d, 8a, f1d, f5a
Asteraceae	<i>Olearia gravis</i> (F.Muell.) Benth.	Native	3KC-	7a, f1a, f2a, f4f
Asteraceae	<i>Olearia microphylla</i> (Vent.) Maiden & Betche	Native		1a, 2b, 2d, f1d
Asteraceae	<i>Olearia oppositifolia</i> (F.Muell.) Lander	Native		4b, 8a
Asteraceae	<i>Olearia ramosissima</i> (DC.) Benth.	Native		7f, 7g, 7h, f4b, f4c, f5b
Asteraceae	<i>Olearia viscidula</i> (F.Muell.) Benth.	Native		2d, 3a, 7g, f1c, f1d
Asteraceae	<i>Ozothamnus diosmifolius</i> (Vent.) DC.	Native		4b, 5a, 5b, 7c, 7d, 7e, 7f, 7g, 7h, 9a, f2c, f4b, f4d
Asteraceae	<i>Ozothamnus obcordatus</i> DC.	Native		f1b, f1d, f2a, f2b, f4b, f5b
Asteraceae	<i>Podolepis jaceoides</i> (Sims) Voss	Native		7c, f1b, f1d
Asteraceae	<i>Podolepis neglecta</i> G.L.R.Davis	Native		5a, 7d, f4e
Asteraceae	<i>Senecio daltonii</i> F.Muell.	Native		7a, f1c, f4a, f4c, f4f
Asteraceae	<i>Senecio diaschides</i> W.H.Drury	Native		6a, 6b, f1c, f5b
Asteraceae	<i>Senecio hispidulus</i> A.Rich.	Native		6a, 7f, f1c, f4c, f5b
Asteraceae	<i>Senecio lautus</i> J.R.Forst. ex Willd.	Native		

Asteraceae	<i>Senecio quadridentatus</i> Labill.	Native		f2a, f4d
Asteraceae	<i>Senecio</i> sp. E	Native		1a, 2d, f1a, f1b, f1c, f1d, f2a, f2b, f2c, f4a, f4b, f4c, f5b
Asteraceae	<i>Sigesbeckia australis</i> D.L.Schulz	Native		6b, 9b
Asteraceae	<i>Silybum marianum</i> (L.) Gaertn.	Introduced		7h
Asteraceae	<i>Solenogyne bellioides</i> Cass.	Native		1a, 1c, 2c, 2d, 2f, 3a, 4a, 6b, 7e, 7f, 7g, 7h, 9a, f1a, f1b, f1c, f1d, f2a, f2b, f4b, f4c, f4d, f4e, f4f, f5a, f5b
Asteraceae	<i>Solenogyne dominii</i> L.G.Adams	Native		1c, f1a
Asteraceae	<i>Sonchus asper</i> (L.) Hill	Introduced		2e, 2f, f4f
Asteraceae	<i>Sonchus oleraceus</i> L.	Introduced		2d, 7d, 7g, 8a, f4b, f5a, f5b
Asteraceae	<i>Taraxacum officinale</i> (L.) Weber	Introduced		3a
Asteraceae	<i>Vittadinia cuneata</i> DC.	Native		5a, 7a, 7g, f4a, f4b, f4e, f5b, f6a
Asteraceae	<i>Vittadinia dissecta</i> (Benth.) N.T.Burb.	Native		1c, 6a, 6b, f4d
Asteraceae	<i>Vittadinia muelleri</i> N.T.Burb.	Native		8a, f4e, f5a, f6a
Asteraceae	<i>Vittadinia sulcata</i> N.T.Burb.	Native		5a, 6a, 6b, 7f, 7g, 8a, 9b, f4c, f4d, f4f, f5a, f6a
Bignoniaceae	<i>Pandorea pandorana</i> (Andrews) Steenis	Native		7a, 7g, 8a, f5a
Blechnaceae	<i>Blechnum cartilagineum</i> Sw.	Native		2a, 9a, f1c, f1d
Blechnaceae	<i>Doodia aspera</i> R.Br.	Native		2a, f1d, f2a
Blechnaceae	<i>Doodia media</i> R.Br.	Native		f2a
Boraginaceae	<i>Cynoglossum australe</i> R.Br.	Native		6b
Brassicaceae	<i>Lepidium pseudohyssopifolium</i> Hewson	Native		9b
Brassicaceae	<i>Rorippa laciniata</i> (F.Muell.) L.A.S.Johnson	Native		7g
Cactaceae	<i>Opuntia aurantiaca</i> Lindl.	Introduced		6a, 6b, 8a, 9a, 9b, f5a,
Cactaceae	<i>Opuntia stricta</i> (Haw.) Haw.	Introduced		6a, 6b, 7d, 7g, 7h, 8a, 9a, 9b, f5a
Campanulaceae	<i>Wahlenbergia communis</i> Carolin	Native		4b, 6a, 6b, 7a, 7g, 9a, 9b, f1c, f2a, f2b, f4a, f5a, f5b
Campanulaceae	<i>Wahlenbergia gracilis</i> (G.Forst.) A.DC.	Native		1a, 2c, 6b, f1b
Campanulaceae	<i>Wahlenbergia graniticola</i> Carolin	Native		4b, 5a, 5b, 7a, 7b, 7d, 7f, 7g, 8a, f2c, f4b, f4e, f5a, f5b
Campanulaceae	<i>Wahlenbergia luteola</i> P.J.Sm.	Native		1a, 1c, 2d, 5a, 7a, 7f, 7g, f1b, f1c, f1d, f2c, f4b, f4c, f4e, f4f, f5b, f6a
Caryophyllaceae	<i>Arenaria leptoclados</i> (Rchb.) Guss.	Introduced		f4b, f5b
Caryophyllaceae	<i>Paronychia brasiliana</i> Poir.	Introduced		5a, f6a
Caryophyllaceae	<i>Petrorhagia nanteuilii</i> (Burnat) P.W.Ball & Heywood	Introduced		6b, 7g, 9b, f4b, f5b
Caryophyllaceae	<i>Scleranthus biflorus</i> (J.R.Forst. & G.Forst.) Hook.f	Native		7h, f1a, f4b, f4c, f4f
Caryophyllaceae	<i>Stellaria media</i> (L.) Cirillo	Introduced		2d, 7a, 7b, 7d, 7g, 7h, f2a, f2c, f4b, f5b, f6a
Casuarinaceae	<i>Allocasuarina brachystachya</i> L.A.S.Johnson	Native	2RCa	5a, 5b, f2c
Casuarinaceae	<i>Allocasuarina gymnanthera</i> L.A.S.Johnson	Native		5a

Casuarinaceae	<i>Allocasuarina inophloia</i> (F.Muell. & F.M.Bailey) L.A.S.Johnson	Native		5a, 5b, 7d, f2c, f4e, f4f, f6a
Casuarinaceae	<i>Allocasuarina littoralis</i> (Salisb.) L.A.S.Johnson	Native		1b, 2a, 2b, 2d, 2e, 2f, 4a, f1a, f1b, f1c, f1d, f2a, f2b, f3a, f3b
Casuarinaceae	<i>Allocasuarina rigida</i> (Miq.) L.A.S.Johnson subsp. <i>rigida</i>	Native		1a, 1b, 1c, 2a, 2c, 3a, 4a, f1d, f3b
Casuarinaceae	<i>Allocasuarina rupicola</i> L.A.S.Johnson	Native	2RC-	2d, 2f
Casuarinaceae	<i>Allocasuarina torulosa</i> (Aiton) L.A.S.Johnson	Native		2a, f1c
Casuarinaceae	<i>Casuarina cunninghamiana</i> Miq.	Native		7g, 8a
Celastraceae	<i>Maytenus silvestris</i> Lander & L.A.S.Johnson	Native		2a, f1c, f1d, f2a
Centrolepidaceae	<i>Centrolepis strigosa</i> (R.Br.) Roem. & Schult.	Native		7e, 7f, 9a
Chenopodiaceae	<i>Chenopodium carinatum</i> R.Br.	Native		6a
Chenopodiaceae	<i>Chenopodium pumilio</i> R.Br.	Native		1a, 1c, 2d, 6a, 7d, 7e, 8a, 9b, f5a, f5b
Chenopodiaceae	<i>Einadia hastata</i> (R.Br.) A.J.Scott	Native		6b, 7b, 7d, 7e, 7g, 7h, 9b, f4e, f5a, f5b
Chenopodiaceae	<i>Einadia nutans</i> (R.Br.) A.J.Scott	Native		6b
Chenopodiaceae	<i>Einadia trigonos</i> (Roem. & Schult.) Paul G.Wilson	Native		f5b
Chloanthaceae	<i>Chloanthes parviflora</i> Walp.	Native		1b, 2a, 2b, 2d
Clusiaceae	<i>Hypericum gramineum</i> G.Forst.	Native		2d, 3a, 4a, 4b, 5a, 6b, 7a, 7f, 7g, 9a, f1b, f1c, f2a, f2b, f4a, f4b, f4c, f4d, f4e, f4f, f5b
Colchicaceae	<i>Wurmbea biglandulosa</i> (R.Br.) T.D.Macfarl.	Native		4b, 7a, 7g, f4b, f5b
Commelinaceae	<i>Commelina cyanea</i> R.Br.	Native		2d, 4a, 5a, 6b, 7a, 7c, 7d, 7f, 7g, 8a, 9a, 9b, f1c, f4d, f5a, f5b
Commelinaceae	<i>Murdannia graminea</i> (R.Br.) G.Bruckn.	Native		2c, 5a, 6b, 7a, 7g, 9b, f2a, f4f
Convolvulaceae	<i>Dichondra repens</i> J.R.Forst. & G.Forst.	Native		2e, 7a, 7f, f1c, f1d, f2a, f2b, f4a, f4b, f4c, f4e
Convolvulaceae	<i>Dichondra</i> sp. A	Native		1c, 6a, 6b, 7g, 9b, f1a, f1b, f2a, f2b, f4b, f4d, f4e, f4f, f5a, f5b
Convolvulaceae	<i>Evolvulus alsinoides</i> L.	Native		6a, 6b, 7g, 8a, f4f
Convolvulaceae	<i>Ipomoea cairica</i> (L.) Sweet	Introduced		6a
Crassulaceae	<i>Crassula decumbens</i> Thunb. var. <i>decumbens</i>	Native		f1c
Crassulaceae	<i>Crassula sieberiana</i> (Schult. & Schult.f.) Druce	Native		1a, 1c, 2d, 2e, 2f, 4b, 6a, 6b, 7a, 7b, 7c, 7d, 7e, 7f, 7g, 7h, 8a, 9a, 9b, f1a, f1c, f2a, f4b, f4c, f5a, f5b
Cucurbitaceae	<i>Citrullus lanatus</i> (Thunb.) Matsum. & Nakai	Introduced		9b
Cupressaceae	<i>Callitris endlicheri</i> (Parl.) F.M.Bailey	Native		2d, 2f, 4a, 4b, 4c, 5a, 5b, 6a, 7a, 7c, 7d, 7f, 7g, 7h, 8a, 9a, 9b, f2c, f4a, f4b, f4c, f4d, f4e, f4f, f5a, f5b
Cupressaceae	<i>Callitris glaucophylla</i> Joy Thomps. & L.A.S.Johnson	Native		6b, 7g, 8a, f4b, f5a
Cupressaceae	<i>Callitris monticola</i> J.Garden	Native	3VC-	2a, 2d, 2e, 2f, 3a
Cupressaceae	<i>Callitris rhomboidea</i> R.Br. ex Rich.	Native		2d, 2f

Cyatheaceae	<i>Cyathea australis</i> (R.Br.) Domin	Native	1c, 2c, 9a
Cyperaceae	<i>Bulbostylis barbata</i> (Rottb.) C.B.Clarke	Native	8a, f5a
Cyperaceae	<i>Bulbostylis densa</i> (Wall.) Hand.-Mazz.	Native	1a, 1b, 1c, 2b, 2d, 2e, 2f, 3a, 4a, 4b, 7a, 7e, 7g, 8a
Cyperaceae	<i>Bulbostylis pyriformis</i> S.T.Blake	Native	9a, 9b
Cyperaceae	<i>Carex appressa</i> R.Br.	Native	7g
Cyperaceae	<i>Carex gaudichaudiana</i> Kunth.	Native	2c
Cyperaceae	<i>Carex incomitata</i> K.R.Thiele	Native	f4a
Cyperaceae	<i>Caustis flexuosa</i> R.Br.	Native	2a, 3a, 7e, 3a, 4b, f1d, f2a, f2b, f2c, f3b
Cyperaceae	<i>Cyperus eragrostis</i> Vahl.	Introduced	f6a
Cyperaceae	<i>Cyperus fulvus</i> R.Br.	Native	4b, 5a, 7a, 7b, 7c, 7d, 7e, 7f, 7g, 8a, 9a, f2a, f4a, f4b, f4d, f5a, f5b
Cyperaceae	<i>Cyperus gracilis</i> R.Br.	Native	6a, 6b, 7g, 9b, f4b, f4e, f5a, f5b, f6a
Cyperaceae	<i>Cyperus imbecillis</i> R.Br.	Native	f1c
Cyperaceae	<i>Eleocharis plana</i> S.T.Blake	Native	f6a
Cyperaceae	<i>Eleocharis sphacelata</i> R.Br.	Native	2e
Cyperaceae	<i>Fimbristylis dichotoma</i> (L.) Vahl	Native	1a, 1b, 1c, 2d, 2f, 3a, 4a, 4b, 5a, 5b, 6a, 6b, 7a, 7c, 7d, 7e, 7f, 7g, 7h, 8a, 9a, 9b, f1c, f4a, f4b, f4c, f4f, f5a, f5b
Cyperaceae	<i>Gahnia aspera</i> (R.Br.) Spreng.	Native	1a, 2d, 2f, 4a, 4b, 4c, 7a, 7b, 7c, 7d, 7f, 7g, 9a, 9b, f2a, f4b, f4d, f4e, f4f
Cyperaceae	<i>Gahnia sieberiana</i> Kunth	Native	1a, 1b, 1c, 2a, 2b, 2c, 2d, 2e, 2f, 3a, 7e, f1d, f2b,
Cyperaceae	<i>Gahnia subaequiglumis</i> S.T.Blake	Native	f1c
Cyperaceae	<i>Gymnoschoenus sphaerocephalus</i> (R.Br.) Hook.f.	Native	1c
Cyperaceae	<i>Isolepis hookeriana</i> Boeck.	Native	7f
Cyperaceae	<i>Lepidosperma gunnii</i> Boeck.	Native	1a, 1b, 1c, 2a, 2b, 2e, 2f, 3a, 4a, 4b, 7a, f3a, f3b
Cyperaceae	<i>Lepidosperma laterale</i> R.Br.	Native	1a, 1b, 1c, 2a, 2c, 2d, 2e, 2f, 3a, 4a, 4b, 4c, 5a, 5b, 7a, 7b, 7c, 7d, 7e, 7f, 7g, 7h, 9a, 9b, f1a, f1c, f1d, f2a, f2b, f2c, f3a, f3b, f4b, f4c, f4d, f4e, f4f, f5a
Cyperaceae	<i>Lepidosperma neesii</i> Kunth	Native	2a, 3a, f1d, f3b
Cyperaceae	<i>Lepidosperma tortuosum</i> F.Muell.	Native	2b
Cyperaceae	<i>Schoenus apogon</i> Roem. & Schult.	Native	1a, 1b, 1c, 2a, 2b, 2d, 2e, 2f, 3a, 4a, 4b, 5a, 5b, 7d, 7g, 7h, f1c, f3a, f4b, f4f
Cyperaceae	<i>Schoenus brevifolius</i> R.Br.	Native	2d, f3a
Cyperaceae	<i>Schoenus melanostachys</i> R.Br.	Native	1b, 2a, 2d, 2e, 3a, f3b
Cyperaceae	<i>Schoenus turbinatus</i> (R.Br.) Poir. ex Roem. & Schult.	Native	3a, f1c
Cyperaceae	<i>Scirpus polystachyus</i> F.Muell.	Native	1a, 1b

Cyperaceae	<i>Scleria mackaviensis</i> Boeck.	Native		4b, 6a, 8a, f2c, f4a, f4e, f5a
Davalliaceae	<i>Davallia pyxidata</i> Cav.	Native		1a, 1c, 2a, 2d, 2f, 4a, 4b, 4c, 7a, f1c, f1d
Dennstaedtiaceae	<i>Calochlaena dubia</i> (R.Br.) M.D.Turner & R.A.White	Native		1a, 2a, 3a
Dennstaedtiaceae	<i>Hypolepis glandulifera</i> Brownsey & Chinnock	Native		f1c, f3b
Dennstaedtiaceae	<i>Pteridium esculentum</i> (G.Forst.) Cockayne	Native		1a, 1b, 1c, 2a, 2c, 2d, 2f, 3a, 4b, 7g, 7h, f1a, f1b, f1c, f1d, f2a, f2b, f2c, f3a, f3b, f4b
Dicksoniaceae	<i>Dicksonia antarctica</i> Labill.	Native		f1d
Dilleniaceae	<i>Hibbertia acicularis</i> (Labill.) F.Muell.	Native		1a, 1b, 1c, 4c, 5a, f2b, f2c, f4c, f4d, f4e
Dilleniaceae	<i>Hibbertia aspera</i> DC.	Native		2d, f1c, f1d, f3a
Dilleniaceae	<i>Hibbertia cistoidea</i> (Hook.) C.T.White	Native		2d
Dilleniaceae	<i>Hibbertia dentata</i> R.Br. ex DC.	Native		f1c, f1d
Dilleniaceae	<i>Hibbertia kaputarensis</i> B.J.Conn	Native	2RC-	7c
Dilleniaceae	<i>Hibbertia linearis</i> R.Br. ex DC.	Native		2d, 7c, 7f, 9a
Dilleniaceae	<i>Hibbertia monogyna</i> R.Br. ex DC.	Native	3RC-	1a, 7e
Dilleniaceae	<i>Hibbertia obtusifolia</i> DC.	Native		2a, 2d, 4c, 5a, 7d, 7f, 7g, 8a, f1a, f1c, f1d, f2a, f2b, f2c, f3a, f4a, f4b, f4c, f4d, f4e, f4f, f5a, f5b
Dilleniaceae	<i>Hibbertia riparia</i> (R.Br. ex DC.) Hoogland	Native		1b, 2a, 2e, 4a, 4b, 5a, 5b, 7d, 7e, 9a, f1c, f1d, f2a, f2b, f2c, f4a, f4b, f4e
Dilleniaceae	<i>Hibbertia scandens</i> (Willd.) K.D.Konig & J.Sims	Native		2a, f1c, f1d
Dilleniaceae	<i>Hibbertia serpyllifolia</i> R.Br. ex DC.	Native		1a, 1b, 1c, 2a, 3a, 4b, f1a, f2c, f3b
Dilleniaceae	<i>Hibbertia</i> sp. "grandiflora" m.s.	Native	2V	6a, 6b
Dilleniaceae	<i>Hibbertia</i> sp. B	Native	2V	4b, 4c, 5a, 5b, 7d, f2c, f4f
Dilleniaceae	<i>Hibbertia villosa</i> B.J.Conn	Native	3KC-	1c, 3a, f3b
Droseraceae	<i>Drosera auriculata</i> Backh. ex Planch.	Native		2d
Droseraceae	<i>Drosera peltata</i> Thunb.	Native		1b, 1c, 2b, 3a, 4b, 5a, 5b, 7a, 7b, 7f, 7g, 8a, 9a, f4b
Droseraceae	<i>Drosera spatulata</i> Labill.	Native		2e, 3a
Elaeocarpaceae	<i>Elaeocarpus holopetalus</i> F.Muell.	Native		2a, 2c, 2d, 2f
Elaeocarpaceae	<i>Elaeocarpus reticulatus</i> Sm.	Native		1b, 2a, f1c, f1d
Epacridaceae	<i>Acrotriche aggregata</i> R.Br.	Native		2a, 2b, 2d, 2e, 2f, f1c, f1d
Epacridaceae	<i>Brachyloma daphnoides</i> (Sm.) Benth. subsp. <i>glabrum</i> (Blakely) J.T.Hunter	Native		1a, 1c, 2d, 2f, 4b, 5a, 5b, 7a, 7b, 7c, 7d, 7e, 7f, 7g, f1a, f1b, f1c, f2a, f2c, f3b, f4a, f4b, f4c, f4d, f4e, f4f, f5b
Epacridaceae	<i>Brachyloma saxicola</i> J.T.Hunter	Native	3RCa	1a, 1b, 1c, 2a, 2b, 3a, 4a, 4b, 4c, 7a, f1d, f2b
Epacridaceae	<i>Epacris longiflora</i> Cav.	Native		2a, 3a, f3b
Epacridaceae	<i>Epacris microphylla</i> R.Br. var. <i>microphylla</i>	Native		1b, 1c, 2c, 3a, f2b, f3b

Epacridaceae	<i>Epacris obtusifolia</i> Sm.	Native		3a
Epacridaceae	<i>Leucopogon attenuatus</i> A.Cunn.	Native		5a, 5b, 8a, f2c
Epacridaceae	<i>Leucopogon biflorus</i> R.Br.	Native		4b, 4c, 7e, f1a, f1b, f1c, f2b, f3b, f4f
Epacridaceae	<i>Leucopogon cicatricatus</i> J.M.Powell	Native	3RCa	1b, 2a, 2c, 2f
Epacridaceae	<i>Leucopogon hookeri</i> Sond.	Native		f1a
Epacridaceae	<i>Leucopogon lanceolatus</i> (Sm.) R.Br. var. <i>lanceolatus</i>	Native		1a, 1b, 1c, 2a, 2b, 2c, 2d, 2f, 3a, f1a, f1b, f1c, f1d, f2a, f2b, f3a, f3b, f4d
Epacridaceae	<i>Leucopogon melaleucooides</i> A.Cunn. ex DC.	Native		2a, 2d, 2e, 2f, 3a, 4a, 4b, 4c, 5a, 5b, 7c, 7d, 7e, 7g, 9a, 9b, f1c, f1d, f2a, f2b, f2c, f3b, f4a, f4d, f4e, f4f
Epacridaceae	<i>Leucopogon microphyllus</i> (Cav.) R.Br.	Native		1a, 1b, 1c, 3a, 4a, 4b, 5a, f2c, f3b
Epacridaceae	<i>Leucopogon muticus</i> R.Br.	Native		4a, 4b, 5a, 5b, 7a, 7c, 7d, 7e, 7f, 7g, 9a, f2a, f2b, f2c, f4a, f4b, f4c, f4d, f4e, f4f, f5b
Epacridaceae	<i>Leucopogon neoanglicus</i> F.Muell. ex Benth.	Native		1a, 1b, 1c, 2a, 2b, 2c, 2d, 2e, 2f, 3a, 4a, 4b, 4c, 5a, 5b, 7a, 7e, 7f, 9a, 9b, f2b
Epacridaceae	<i>Leucopogon</i> sp. aff. <i>appressus</i>	Native		f3b
Epacridaceae	<i>Leucopogon virgatus</i> (Labill.) R.Br.	Native		f2b
Epacridaceae	<i>Lissanthe strigosa</i> (Sm.) R.Br.	Native		5a, 5b, 7f, f1a, f2c, f4a, f4b, f4c, f4d, f4e, f4f
Epacridaceae	<i>Melichrus erubescens</i> A.Cunn. ex DC.	Native	RK	4b, f2c, f4e
Epacridaceae	<i>Melichrus procumbens</i> (Cav.) Druce	Native		2e, 3a, f1a, f1b, f1c, f2a, f2b, f2c, f3a, f3b
Epacridaceae	<i>Melichrus urceolatus</i> R.Br.	Native		2d, 4a, 4b, 5a, 5b, 6a, 7a, 7c, 7d, 7e, 7f, 7g, 7h, 8a, f1a, f2a, f2b, f2c, f3b, f4a, f4b, f4c, f4d, f4e, f4f, f5a, f5b
Epacridaceae	<i>Monotoca scoparia</i> (Sm.) R.Br.	Native		1a, 1c, 2a, 2b, 2c, 2d, 2e, 2f, 3a, 4b, 5a, 7a, 7e, f1a, f1b, f1c, f1d, f2a, f2b, f2c, f3a, f3b, f4a, f4c, f4e, f4f
Epacridaceae	<i>Styphelia perileuca</i> J.M.Powell	Native	2VC-	f1a
Epacridaceae	<i>Styphelia triflora</i> Andrews	Native		2a, 4b, 4c, 5a, 5b, 8a, f2b, f2c, f3b, f4e, f4f, f5a
Epacridaceae	<i>Styphelia viridis</i> Andrews	Native		2d, 2f, f2a
Epacridaceae	<i>Trochocarpa laurina</i> (Rudge) R.Br.	Native		2a, f1c, f1d
Epacridaceae	<i>Trochocarpa</i> sp. A	Native		2c
Escalloniaceae	<i>Quintinia sieberi</i> A.DC.	Native		2f
Euphorbiaceae	<i>Amperea xiphoclada</i> (Sieber ex Spreng.) Druce var. <i>xiphoclada</i>	Native		2a, 2d, 2e, 2f, f1a, f3a
Euphorbiaceae	<i>Bertya cunninghamii</i> Planch.	Native	RK	2a, 6b, f2c
Euphorbiaceae	<i>Bertya glandulosa</i> Gruning	Native	2KC-	f2a
Euphorbiaceae	<i>Bertya gummifera</i> Planch.	Native		5a, 5b
Euphorbiaceae	<i>Bertya oleifolia</i> Planch.	Native		8a

Euphorbiaceae	<i>Beyeria viscosa</i> (Labill.) Miq.	Native		7d, 7g, 8a, f5b
Euphorbiaceae	<i>Breynia cernua</i> (Poir.) Muell.Arg.	Native		f5a, f5b
Euphorbiaceae	<i>Chamaesyce drummondii</i> (Boiss.) D.C.Hassall	Native		7g, 8a, f5a
Euphorbiaceae	<i>Euphorbia eremophila</i> A.Cunn.	Native		6a
Euphorbiaceae	<i>Euphorbia planiticola</i> D.C.Hassall	Native		f5a
Euphorbiaceae	<i>Micrantheum ericoides</i> Desf.	Native	RK	4b
Euphorbiaceae	<i>Micrantheum hexandrum</i> Hook.f.	Native	RK	2d, 7a
Euphorbiaceae	<i>Monotaxis macrophylla</i> Benth.	Native	RK TSC	1a, 1b
Euphorbiaceae	<i>Phyllanthus gunnii</i> Hook.f.	Native		f1c
Euphorbiaceae	<i>Phyllanthus carpentariae</i> Benth.	Native	RK	8a
Euphorbiaceae	<i>Phyllanthus hirtellus</i> (F.Muell.) Muell.Arg.	Native		2e, 3a, f1c, f1d, f2a, f3a, f3b
Euphorbiaceae	<i>Phyllanthus occidentalis</i> J.T.Hunter & J.J.Bruhl	Native		4b, 5b, 7d, f2b, f2c
Euphorbiaceae	<i>Phyllanthus subcrenulatus</i> F.Muell.	Native		7g
Euphorbiaceae	<i>Phyllanthus virgatus</i> G.Forst.	Native		1a, 6a, 7d, 8a, f4e, f4f
Euphorbiaceae	<i>Poranthera corymbosa</i> Brongn.	Native		4b, f2c
Euphorbiaceae	<i>Poranthera microphylla</i> Brongn.	Native		1a, 2d, f1a, f1b, f1c, f1d, f2a, f2b, f3a, f4a, f4b, f4d, f4f
Euphorbiaceae	<i>Pseudanthus divaricatissimus</i> (Muell.Arg.) Benth.	Native	3RCa	1c
Euphorbiaceae	<i>Pseudanthus ovalifolius</i> F.Muell.	Native	RK NSW	4b
Euphorbiaceae	<i>Pseudanthus pimeleoides</i> Sieber ex Spreng.	Native	RK	3a
Fabaceae	<i>Acacia adunca</i> A.Cunn. ex G.Don.	Native	3RC-	2d, 2f, 4a, 7a, f1c, f2a, f4e
Fabaceae	<i>Acacia barringtonensis</i> Tindale	Native	3RCa	3a, f3b
Fabaceae	<i>Acacia betchei</i> Maiden & Blakely	Native	2RC	4b, f2b, f2c
Fabaceae	<i>Acacia brownei</i> (Poir.) Steud.	Native		2d
Fabaceae	<i>Acacia brunioides</i> A.Cunn. ex G.Don.	Native	3RC-	3a
Fabaceae	<i>Acacia buxifolia</i> A.Cunn.	Native		5a, 5b, 7a, f2b, f2c, f4e, f4f
Fabaceae	<i>Acacia cheelii</i> Blakely	Native		7f, 7g, f4c
Fabaceae	<i>Acacia eborensis</i> m.s.	Native	2VCi	7e
Fabaceae	<i>Acacia falcata</i> Willd.	Native		7c
Fabaceae	<i>Acacia falciformis</i> DC.	Native		1a, 1c, 2a, 2b, 2c, 2d, 2e, 3a, 4b, 4c, 5a, 7g, 9a, f1a, f1b, f1c, f1d, f2a, f2c, f3a, f3b, f4b, f4d
Fabaceae	<i>Acacia filicifolia</i> Cheel & M.B.Welch ex M.B.Welch, Coombs & McGlynn	Native		f1a, f1b, f1c, f2a, f2b
Fabaceae	<i>Acacia fimbriata</i> A.Cunn. ex G.Don.	Native		7a, f1a, f1b, f2a, f2b, f4b, f4e
Fabaceae	<i>Acacia floribunda</i> (Vent.) Willd.	Native		f2a

Fabaceae	<i>Acacia floydii</i> Tindale	Native	2RC-	2a, 2d, f1c
Fabaceae	<i>Acacia granitica</i> Maiden	Native	3RC-	4b, 7e, 7g, 9a
Fabaceae	<i>Acacia gunnii</i> Benth.	Native		5a, f1a, f2c
Fabaceae	<i>Acacia implexa</i> Benth.	Native		f1c
Fabaceae	<i>Acacia juncifolia</i> Benth.	Native		7a
Fabaceae	<i>Acacia latisejala</i> Pedley	Native	3RC-	2d, 2e, 2f, 4b
Fabaceae	<i>Acacia leiocalyx</i> (Domin) Pedley	Native		7g, 8a, f4b, f5a
Fabaceae	<i>Acacia leptoclada</i> A.Cunn. ex Benth.	Native		f5b, f6a
Fabaceae	<i>Acacia longifolia</i> (Andrews) Willd.	Native		1b, 2a
Fabaceae	<i>Acacia macnuttiana</i> Maiden & Blakely	Native	3VC-	2d, 4b, 7a, 7d, f2a, f2b
Fabaceae	<i>Acacia mitchellii</i> Benth.	Native	RK	f1a, f3b
Fabaceae	<i>Acacia myrtifolia</i> (Sm.) Willd.	Native		f1d, f2a
Fabaceae	<i>Acacia neriifolia</i> A.Cunn. ex Benth.	Native		4b, 5a, 6a, 6b, 7a, 7c, 7d, 7f, 7g, 7h, 9a, 9b, f2a, f2c, f4a, f4b, f4c, f4d, f4e, f4f, f5b
Fabaceae	<i>Acacia obtusifolia</i> A.Cunn.	Native		1b, 2a, 2b, 3a, 4a, f1d, f2b, f3a, f3b
Fabaceae	<i>Acacia orites</i> Pedley	Native	2RC-	f1c
Fabaceae	<i>Acacia penninervis</i> Sieber ex DC.	Native		5b, 7f, 7g, f2c, f4c, f4e
Fabaceae	<i>Acacia polybotrya</i> Benth.	Native		5b, f2c, f4e
Fabaceae	<i>Acacia pruinosa</i> A.Cunn. ex Benth.	Native		5a, 5b, 7a, 7c, 7g, f2c, f4b, f4f
Fabaceae	<i>Acacia pycnostachya</i> F.Muell.	Native	2V	4a, 7a
Fabaceae	<i>Acacia rubida</i> A.Cunn.	Native		7a
Fabaceae	<i>Acacia</i> sp. aff. <i>torringtonensis</i>	Native	2ECt	3a
Fabaceae	<i>Acacia stricta</i> (Andrews) Willd.	Native		7e, f2a
Fabaceae	<i>Acacia suaveolens</i> (Sm.) Willd.	Native		2a, 3a, f1d
Fabaceae	<i>Acacia torringtonensis</i> Tindale	Native	3RC	4b, 5a, 5b, f2c
Fabaceae	<i>Acacia triptera</i> Benth.	Native		7c, 7e, 7f, 9a, 9b, f4d
Fabaceae	<i>Acacia ulicifolia</i> (Salisb.) Court	Native		1a, 1b, 1c, 2b, 2d, 2e, 3a, 4b, 5a, 5b, 7g, 7h, f1c, f2a, f2b, f2c, f3a, f3b, f4b, f4d, f4f
Fabaceae	<i>Acacia venulosa</i> Benth.	Native		1a, 1b, 1c, 2c, 2d, 2e, 2f, 3a, 4a, 4b, 5a, 5b, 7a, 7e, f1c, f2c, f3b, f4b, f4e
Fabaceae	<i>Acacia viscidula</i> Benth.	Native		1a, 1b, 1c, 2b, 2d, 2e, 2f, 4a, 4b, 6b, 7a, 7b, 7e, 7f, 7g, 9a, f1d, f4b
Fabaceae	<i>Acacia williamsiana</i> J.T.Hunter	Native	2RC-	5a, 5b, 8a, f2c, f5a
Fabaceae	<i>Aotus subglauca</i> Blakely & McKie	Native		1a, 1b, 2d, 4b, 5a, 5b, 7e, f1c, f2a, f2b, f2c, f3b, f4a
Fabaceae	<i>Bossiaea heterophylla</i> Vent.	Native		f4d

Fabaceae	<i>Bossiaea neo-anglica</i> F.Muell.	Native		1a, 2a, 3a, fl a, fl b, fl c, f2c, f3a, f3b
Fabaceae	<i>Bossiaea obcordata</i> (Vent.) Druce	Native		4c, f4d
Fabaceae	<i>Bossiaea prostrata</i> R.Br.	Native		f4c
Fabaceae	<i>Bossiaea rhombifolia</i> Sieber ex DC.	Native		1a, 1c, 2d, 4b, fl a, f2a, f2c
Fabaceae	<i>Bossiaea scortechinii</i> F.Muell.	Native		1a, 2a, 4b, fl a, fl b, fl c, fl d, f2a, f2b, f2c, f3a, f3b, f4e
Fabaceae	<i>Cullen tenax</i> (Lindl.) J.W.Grimes	Native		fl b
Fabaceae	<i>Daviesia latifolia</i> R.Br.	Native		fl c, f2a, f4b
Fabaceae	<i>Daviesia ulicifolia</i> C.R.P.Andrews subsp. <i>pilligensis</i> G.Chandler & Crisp	Native		4b, 5b, fl a, f2c
Fabaceae	<i>Daviesia ulicifolia</i> C.R.P.Andrews subsp. <i>stenophylla</i> G.Chandler & Crisp	Native		f2a, f3a
Fabaceae	<i>Daviesia umbellulata</i> Sm.	Native		f3b
Fabaceae	<i>Daviesia villifera</i> A.Cunn. ex Benth.	Native		fl c, f3a, f3b
Fabaceae	<i>Daviesia wyattiana</i> F.M.Bailey	Native		fl d
Fabaceae	<i>Desmodium brachypodum</i> A.Gray	Native		6a, 6b, fl c, f4b, f4e, f5a, f5b
Fabaceae	<i>Desmodium varians</i> (Labill.) G.Don	Native		2d, 7g, fl b, fl c, f2a, f2b, f4a, f4b, f4c, f4e, f5a, f5b
Fabaceae	<i>Dillwynia phyllicoides</i> A.Cunn.	Native		1a, 1b, 1c, 2c, 2e, 3a, 4a, 7c, 7g, fl a, fl b, fl c, f2c, f3a, f3b, f4f
Fabaceae	<i>Dillwynia retorta</i> (J.C.Wendl.) Druce	Native		7e, f2b
Fabaceae	<i>Dillwynia sieberi</i> Steud.	Native		2a, 3a, 5a, 7g, f4d, f4f
Fabaceae	<i>Genista stenopetala</i> Webb & Berth.	Introduced		f4b
Fabaceae	<i>Glycine clandestina</i> J.C.Wendl.	Native		2d, 6a, 6b, 7a, 7f, 7g, 9b, fl a, fl b, fl c, fl d, f2a, f2b, f4b, f4c, f4d, f4e, f4f, f5a, f5b
Fabaceae	<i>Glycine microphylla</i> (Benth.) Tindale	Native		2d, fl c, f3a
Fabaceae	<i>Glycine tabacina</i> (Labill.) Benth.	Native		7g, fl a, f2a, f4a, f4b, f4e, f5a
Fabaceae	<i>Gompholobium huegelii</i> Benth.	Native		4b, fl a, f2b, f2c
Fabaceae	<i>Gompholobium inconspicuum</i> Crisp	Native	RK	f3b
Fabaceae	<i>Gompholobium latifolium</i> Sm.	Native		f3b
Fabaceae	<i>Hardenbergia violacea</i> (Schneev.) Stearn	Native		2a, 2b, 2d, 2f, 4a, 4b, 7a, 7g, 7h, fl a, fl b, fl c, fl d, f2a, f2b, f2c f4b, f4c, f4d, f4e, f4f
Fabaceae	<i>Hovea lanceolata</i> J.Sims	Native		3a, 4b, 5a, 5b, 6b, 7a, 7c, 7d, 7g, 8a, 9a, fl a, f4b, f4d, f5a
Fabaceae	<i>Hovea linearis</i> (Sm.) R.Br.	Native		fl a, fl b, fl c, f2a, f2b, f2c, f3a, f3b, f4b
Fabaceae	<i>Hovea purpurea</i> Sweet	Native		2d, 2e
Fabaceae	<i>Hovea</i> sp. A	Native		1a, 1b, 1c, 2a, 2d, 2f, 3a, 4a, 4b, 7b, 7e, 7f, 7g, f3b
Fabaceae	<i>Indigofera adesmiifolia</i> A.Gray	Native		fl c, f4a, f4b, f4c

Fabaceae	<i>Indigofera australis</i> Willd.	Native		4b, f2a, f4d
Fabaceae	<i>Indigofera brevidens</i> Benth.	Native		f2b, f4e
Fabaceae	<i>Jacksonia scoparia</i> R.Br. ex Sm.	Native		2d, 7a, 8a, f1d, f2a, f2c, f4e, f4f
Fabaceae	<i>Kennedia rubicunda</i> (Schneev.) Vent.	Native		f1c, f1d
Fabaceae	<i>Medicago arabica</i> (L.) Huds.	Introduced		f4b, f5b
Fabaceae	<i>Mirbelia confertiflora</i> Pedley	Native	3RCa	1a, 1b, 1c, 2e, 3a, 4a, 7a, 7e, f3b
Fabaceae	<i>Mirbelia pungens</i> A.Cunn. ex G.Don.	Native		2d, 3a, 4b, 7c, 7f, 7g, 8a
Fabaceae	<i>Mirbelia rubiifolia</i> (Andrews) G.Don.	Native		3a, 4b, 7a, f3b
Fabaceae	<i>Mirbelia speciosa</i> Sieber ex DC. subsp. <i>speciosa</i>	Native		1b, 2b, 2d, 2e, 2f, 3a, 4b, 5a, 5b, f2c, f3b
Fabaceae	<i>Phyllota phyllicoides</i> (Sieber ex DC.) Benth.	Native		2a, 3a, f3b
Fabaceae	<i>Podolobium arborescens</i> R.Br.	Native		2f, f3b
Fabaceae	<i>Podolobium ellipticum</i> (Vent.) R.Br. ex W.T.Aiton	Native		7g, f4b
Fabaceae	<i>Podolobium ilicifolium</i> (Andrews) Domin	Native		2a, 2d, f1a, f1c, f1d, f3a, f3b
Fabaceae	<i>Pultenaea campbellii</i> Maiden & Betche	Native	3V	f2b
Fabaceae	<i>Pultenaea foliolosa</i> A.Cunn. ex Benth.	Native		5a, 5b, f2c, f4f
Fabaceae	<i>Pultenaea hartmannii</i> F.Muell.	Native		f2a
Fabaceae	<i>Pultenaea pycnocephala</i> F.Muell. ex Benth.	Native	3RCa	f3a, f3b
Fabaceae	<i>Pultenaea retusa</i> Smith	Native		3a, f1d, f3b
Fabaceae	<i>Pultenaea</i> sp. B	Native		3a, f1d, f3b, f4a
Fabaceae	<i>Pultenaea</i> sp. C	Native		5a, 7c, 7g, f2c, f4b, f4d, f4e, f4f
Fabaceae	<i>Pultenaea</i> sp. G	Native		f4a, f4c
Fabaceae	<i>Pultenaea</i> sp. aff. <i>obovata</i>	Native		2a
Fabaceae	<i>Pultenaea stuartiana</i> H.B.Will.	Native	3VC-	2e, 4b, f2c
Fabaceae	<i>Senna artemisioides</i> (DC.) Randall	Native		7d
Fabaceae	<i>Swainsona galegifolia</i> (Andrews) R.Br.	Native		6a, f4b, f4f, f5a, f5b
Fabaceae	<i>Trifolium repens</i> L.	Introduced		6a, 6b, 7g, 7h, 9b, f1c, f5b
Fabaceae	<i>Vicia villosa</i> Roth	Introduced		f6a
Gentianaceae	<i>Centaurium erythraea</i> Rafn	Introduced		f1b, f1c, f2b, f4a
Geraniaceae	<i>Geranium molle</i> L.	Introduced		6b, f4b, f5b
Geraniaceae	<i>Geranium potentilloides</i> L'Her. ex DC.	Native		f1b
Geraniaceae	<i>Geranium solanderi</i> Carolin var. <i>grande</i> Carolin	Native		6a, f2b
Geraniaceae	<i>Geranium solanderi</i> Carolin var. <i>solanderi</i>	Native		2d, 6a, 7g, f1a, f1b, f1c, f1d, f2a, f2b, f4a, f4b, f4c, f4e, f4f, f5a, f5b
Geraniaceae	<i>Pelargonium australe</i> Willd.	Native		2d, 2e, 7g, f1a, f1c, f5b
Geraniaceae	<i>Pelargonium inodorum</i> Willd.	Native		f1c, f2a

Gleicheniaceae	<i>Gleichenia dicarpa</i> R.Br.	Native	1c, fld, f3b
Goodeniaceae	<i>Dampiera lanceolata</i> A.Cunn. ex DC.	Native	5a, 5b, f2c
Goodeniaceae	<i>Dampiera stricta</i> (Sm.) R.Br.	Native	1a, 2a, 3a, fla, flc, fld, f2b, f2c, f3b
Goodeniaceae	<i>Goodenia bellidifolia</i> Sm. subsp. <i>argentea</i> Carolin	Native	1a, 1b, 2b, 2d, 2e, 3a, 4b, 5a, 5b, 6a, 7a, 7c, 7g, 9a, fla, flb, flc, f2a, f2b, f2c, f3a, f4a, f4c, f4e, f4f, f5a
Goodeniaceae	<i>Goodenia hederacea</i> Sm.	Native	1a, 1c, 2d, 2e, 3a, 4a, 4b, 5b, 7a, 7d, 7e, 7g, 8a, fla, flb, flc, fld, f2a, f2b, f2c, f3a, f3b, f4b, f4c, f4d, f4e, f4f, f5a
Goodeniaceae	<i>Velleia paradoxa</i> R.Br.	Native	1a, 2a
Haemodoraceae	<i>Haemodorum planifolium</i> R.Br.	Native	3a, flc, f3a
Haloragaceae	<i>Gonocarpus elatus</i> (A.Cunn. ex Fenzl) Orchard	Native	8a, fla
Haloragaceae	<i>Gonocarpus micranthus</i> Thunb. subsp. <i>micranthus</i>	Native	1a, 1b, 1c, 2b, 2d, 2e, 2f, 3a, 4a, 4b, 7c, 7e, 7f, 9a, flc, f4a
Haloragaceae	<i>Gonocarpus oreophilus</i> Orchard	Native	1b, 2a, 2d, 2e, 2f, 3a, 4a, flc, fld, f3b
Haloragaceae	<i>Gonocarpus tetragynus</i> Labill.	Native	1c, 2a, 2b, 2d, 4b, 5a, 6b, 7a, 7e, 7f, 7g, 8a, 9a, fla, flb, flc, fld, f2a, f2b, f2c, f3a, f4a, f4b, f4d, f4f, f5a
Haloragaceae	<i>Gonocarpus teucroides</i> DC.	Native	1a, 1b, 1c, 2a, 2b, 2d, 2e, 2f, 3a, 4a, 4b, 5a, 5b, 6b, 7a, 7b, 7c, 7e, 7g, 7h, 9a, 9b, fla, flc, f2c, f3b, f4a, f4d, f4f
Haloragaceae	<i>Haloragis aspera</i> Lindl.	Native	7a, 7g, fld, f2a, f3a, f3b, f4b, f4f
Haloragaceae	<i>Haloragis heterophylla</i> Brongn.	Native	flc, f2a, f4a, f4b
Hypoxidaceae	<i>Hypoxis exilis</i> R.J.F.Hend.	Native	7a, f4f
Iridaceae	<i>Patersonia glabrata</i> R.Br.	Native	1b, 1c, 2a, 2e, 3a, 4b, fla, flc, fld, f2a, f2c, f3a, f3b
Iridaceae	<i>Patersonia sericea</i> R.Br.	Native	1a, 1b, 1c, 2a, 2b, 2d, 2e, 3a, 4a, 4b, 4c, 5a, 7a, 7e, 9b, fla, flc, fld, f2a, f2b, f2c, f3a, f3b, f4b, f4c, f4d, f4f
Juncaceae	<i>Juncus bufonius</i> L.	Native	2d, 2e, 8a, f4a
Juncaceae	<i>Juncus continuus</i> L.A.S.Johnson	Native	2d, 2e, 4a, 4b, 7g, f2a, f2b, f4b, f5b
Juncaceae	<i>Juncus firmus</i> L.A.S.Johnson	Native	1b, f6a
Juncaceae	<i>Juncus laeviusculus</i> L.A.S.Johnson	Native	7a, f2a
Juncaceae	<i>Juncus remotiflorus</i> L.A.S.Johnson	Native	1c, 2a, 4b, 4c, 7g, 8a, 9a, fla, f4a, f4f
Juncaceae	<i>Juncus subsecundus</i> N.A.Wakef.	Native	4b, f4a
Juncaceae	<i>Luzula flaccida</i> (Buchenau) Edger	Native	1a, 1c, 3a, 7e, 7f, f4b
Lamiaceae	<i>Ajuga australis</i> R.Br.	Native	1a, 2d, 7f, 7g, flb, f2a, f2b, f4b, f4e, f4f, f5a, f5b, f6a
Lamiaceae	<i>Marrubium vulgare</i> L.	Introduced	7g
Lamiaceae	<i>Mentha diemenica</i> Spreng.	Native	7e, flb, flc, f4e
Lamiaceae	<i>Plectranthus graveolens</i> R.Br.	Native	1c, 2d, 4a, 7a
Lamiaceae	<i>Plectranthus parviflorus</i> Willd.	Native	2d, 4a, 5a, 7a, 7g, 8a, 9a, 9b, flc, fld, f5a

Lamiaceae	<i>Plectranthus suaveolens</i> S.T.Blake	Native	3RC-	2d, 2e, 2f, f1c
Lamiaceae	<i>Prostanthera howelliae</i> Blakely	Native		7f
Lamiaceae	<i>Prostanthera nivea</i> A.Cunn. ex Benth.	Native		2b, 4a, 4b, 5a, 5b, 6b, 7a, 7b, 7c, 7e, 7f, 7g, 9a, 9b, f2a, f4c, f4d
Lamiaceae	<i>Prostanthera saxicola</i> R.Br.	Native		2d, 2e, 2f, 3a, 4a, 4b, 5a, 5b, 8a, f1b, f3b, f4e
Lamiaceae	<i>Prostanthera scutellarioides</i> (R.Br.) Briq.	Native		1a, 1c, 2c, 3a, f3b
Lamiaceae	<i>Prostanthera</i> sp. Boonoo Boonoo	Native	2RC-	2d, 2f
Lamiaceae	<i>Prostanthera staurophylla</i> F.Muell.	Native	2RC	4b
Lamiaceae	<i>Prunella vulgaris</i> L.	Native		2d
Lamiaceae	<i>Scutellaria humilis</i> R.Br.	Native		6b, f5b
Lamiaceae	<i>Westringia eremicola</i> A.Cunn. ex Benth.	Native		9a
Lamiaceae	<i>Westringia longifolia</i> R.Br.	Native		f4f
Lauraceae	<i>Cassytha filiformis</i> L.	Native		2a, 2c, 3a, 4a, 4b, f1a, f1d
Lauraceae	<i>Cassytha globella</i> R.Br.	Native		3a, 5a, 7a, f2c, f3b
Lauraceae	<i>Cassytha pubescens</i> R.Br.	Native		2e, 4b, 5a, 5b, 7e, 7g, f2b, f2c, f4c
Lindsaeaceae	<i>Lindsaea linearis</i> Sw.	Native		1b, 1c, 3a, f3a, f3b
Lobeliaceae	<i>Isotoma anethifolia</i> Summerh.	Native		1b, 2d, 2e, 2f, 4a, 5b, 7a, 7c, 7f, 9a, 9b, f1d, f4c, f4d
Lobeliaceae	<i>Isotoma axillaris</i> Lindl.	Native		1c, 4b, 4c, 5a, 5b, 6a, 6b, 7a, 7b, 7c, 7d, 7e, 7g, 7h, 9a, 9b, f4b
Lobeliaceae	<i>Lobelia gibbosa</i> Labill.	Native		2d, 2f, 7a
Lobeliaceae	<i>Lobelia gracilis</i> Andrews	Native		2b, 4a, 4b, 4c, 5a, 7a, 7b, 7c, 7e, 7f, 7g, 7h, 8a, 9a, 9b, f4c, f5a
Lobeliaceae	<i>Pratia purpurascens</i> (R.Br.) E. Wimm.	Native		2d, 2e, 7a, f1a, f1b, f1c, f1d, f2a, f4b, f4e
Loganiaceae	<i>Logania albiflora</i> (Andrews) Druce	Native		4b, f2a, f4b
Lomandraceae	<i>Lomandra confertifolia</i> (F.M.Bailey) Fahn.	Native		2d, f1c, f4c
Lomandraceae	<i>Lomandra cylindrica</i> A.T.Lee	Native		7e, f2b, f2c
Lomandraceae	<i>Lomandra elongata</i> (Benth.) Ewart	Native		f1a, f3b
Lomandraceae	<i>Lomandra filiformis</i> (Thunb.) Britten subsp. <i>filiformis</i>	Native		1a, 2e, 3a, 4b, 5a, 5b, 7a, 7c, 7e, 7g, 8a, 9a, f1a, f1b, f1c, f1d, f2a, f2b, f2c, f3a, f3b, f4b, f4d, f4e, f5a
Lomandraceae	<i>Lomandra longifolia</i> Labill.	Native		1a, 1b, 1c, 2a, 2b, 2c, 2d, 2e, 2f, 3a, 4a, 4b, 4c, 5a, 6b, 7a, 7c, 7e, 7f, 7g, 7h, 8a, f1a, f1b, f1c, f1d, f2a, f2b, f2c, f3a, f3b, f4a, f4b, f4c, f4d, f4e, f4f, f5a
Lomandraceae	<i>Lomandra multiflora</i> (R.Br.) Britten	Native		4b, 5a, 5b, 7a, 7c, 7d, 7f, 7g, 8a, 9b, f1a, f1d, f2a, f2b, f2c, f3a, f3b, f4a, f4b, f4c, f4d, f4e, f4f, f5a
Loranthaceae	<i>Amyema cambagei</i> (Blakely) Danser	Native		2d, 4b, 7g
Loranthaceae	<i>Amyema miquelii</i> (Lehm. ex Miq.) Tiegh.	Native		4b, 4c, 5b, 7f, 7g, f4e, f5b
Loranthaceae	<i>Amyema pendulum</i> (Sieber ex Spreng.) Tiegh.	Native		2b, 2d, 4b, 4c, 7a, 7c, 7g, 7h, 9a, f1b, f1c, f2a, f2b, f3a, f4b, f4d, f5b

Loranthaceae	<i>Muellerina celastroides</i> (Sieber ex Schult. & Schult.f.) Tiegh.	Native		9a, f4d
Loranthaceae	<i>Muellerina eucalyptoides</i> (DC.) Barlow	Native		4a, 7d, 8a
Luzuriagaceae	<i>Eustrephus latifolius</i> R.Br. ex Ker Gawl.	Native		1a, 2d, 6b, f1c, f1d, f2a, f4b, f4c
Lycopodiaceae	<i>Lycopodium deuterodensum</i> Herter	Native		f3b
Lycopodiaceae	<i>Lycopodium laterale</i> R.Br.	Native		2e
Moraceae	<i>Ficus rubiginosa</i> Desf. ex Vent.	Native		4a, 4c, 6b, 7a, 7g, 8a, 9a, f4c, f4d, f5a, f5b
Myoporaceae	<i>Myoporum montanum</i> R.Br.	Native		6b
Myrsinaceae	<i>Rapanea variabilis</i> (R.Br.) Mez	Native		f1c
Myrtaceae	<i>Angophora floribunda</i> (Sm.) Sweet	Native		7f, 7g, 8a, 9a, f2a, f4a, f4b, f4c, f4d, f4e, f5a, f5b
Myrtaceae	<i>Babingtonia densifolia</i> (Sm.) F.Muell.	Native		4b, 5a, 5b, 7e, 7g, 9a, 9b
Myrtaceae	<i>Babingtonia odontocalyx</i> A.R.Bean	Native	2VC	4b, 4c
Myrtaceae	<i>Baeckea</i> sp. C	Native		3a, 7e
Myrtaceae	<i>Callistemon citrinus</i> (Curtis) Skeels	Native		4b, 8a
Myrtaceae	<i>Callistemon comboynensis</i> Cheel	Native	2V	3a
Myrtaceae	<i>Callistemon flavovirens</i> (Cheel) Cheel	Native	3RC-	2d, f2a
Myrtaceae	<i>Callistemon linearis</i> DC.	Native		f4e
Myrtaceae	<i>Callistemon pallidus</i> (Bonpl.) DC.	Native		1a, 1c, 2d, 2e, 2f, 3a, f1a, f3b
Myrtaceae	<i>Callistemon pungens</i> Lumley & R.D.Spencer	Native	3RC-	1b, 7a, 7c, 7f, f2b, f2c, f6a
Myrtaceae	<i>Calytrix tetragona</i> Labill.	Native		1a, 1b, 1c, 2f, 3a, 4a, 4b, 5a, 5b, 7a, 7b, 7c, 7d, 7e, 7f, 7g, 7h, 9a, f4c, f5a
Myrtaceae	<i>Corymbia dolichocarpa</i> (D.J.Carr. & S.G.M.Carr.) K.D.Hill & L.A.S.Johnson	Native		8a, f5a
Myrtaceae	<i>Eucalyptus acaciiformis</i> H.Deane & Maiden	Native		1a, 1b, 3a, f1a, f1c
Myrtaceae	<i>Eucalyptus albens</i> Miq. ex Benth.	Native		7a, 7g, f2a, f2b, f4b, f4f, f5b
Myrtaceae	<i>Eucalyptus andrewsii</i> Maiden	Native		1b, 2a, 2b, 2d, 4b, 4c, 7a, 7c, 7e, f1d, f2a, f2b, f2c, f3a, f4b, f4c
Myrtaceae	<i>Eucalyptus banksii</i> Maiden	Native		2d, 2e, 2f, f2b, f2c, f4d, f4f
Myrtaceae	<i>Eucalyptus blakelyi</i> Maiden	Native		f4a, f4b, f5b
Myrtaceae	<i>Eucalyptus bridgesiana</i> R.T.Baker	Native		2a, 4a, f1d, f2a, f4a, f4d, f6a
Myrtaceae	<i>Eucalyptus brunnea</i> L.A.S.Johnson & K.D.Hill	Native		2b, f1c, f2b
Myrtaceae	<i>Eucalyptus caleyi</i> Maiden	Native		5a, 5b, 7a, 7c, 7f, f2c, f4c, f4d, f4f, f5a
Myrtaceae	<i>Eucalyptus caliginosa</i> Blakely & McKie	Native		1a, 1c, 2c, 4a, f1a, f1b, f1d, f2a, f2b, f3b, f4a
Myrtaceae	<i>Eucalyptus campanulata</i> R.T.Baker & H.G.Sm.	Native		1b, 2a, 2d, 2e, 2f, f1c, f1d, f3a, f3b
Myrtaceae	<i>Eucalyptus codonocarpa</i> Blakely & McKie	Native	3RC-	1a, 1b, 1c, 2a, 2e, 2f, 3a

Myrtaceae	<i>Eucalyptus crebra</i> F.Muell.	Native		5a, f2c, f4b, f4e, f4f, f6a
Myrtaceae	<i>Eucalyptus dalrympleana</i> Maiden	Native		1a, 1c, 2e, 2f, f1a, f1b, f1c, f1d, f2a, f2b, f4a, f4b
Myrtaceae	<i>Eucalyptus dealbata</i> A.Cunn. ex Schauer	Native		2d, 2f, 4a, 4b, 5a, 5b, 6b, 7a, 7c, 7d, 7e, 7f, 7g, 8a, 9a, 9b, f2a, f2b, f2c, f4b, f4c, f4d, f4e, f4f, f5a, f5b
Myrtaceae	<i>Eucalyptus dunnii</i> Maiden	Native	3RCa	f1c
Myrtaceae	<i>Eucalyptus exserta</i> F.Muell.	Native	RK NSW	f2c
Myrtaceae	<i>Eucalyptus laevopinea</i> R.T.Baker	Native		f2c
Myrtaceae	<i>Eucalyptus ligustrina</i> DC.	Native		3a, f3b
Myrtaceae	<i>Eucalyptus macrorhyncha</i> F.Muell. ex Benth.	Native		7d, 7f, f2c, f4c, f4e
Myrtaceae	<i>Eucalyptus malacoxylon</i> Blakely	Native	3R	f4b
Myrtaceae	<i>Eucalyptus mckieana</i> Blakely	Native	2VC	5a, f4f
Myrtaceae	<i>Eucalyptus melliodora</i> A.Cunn. ex Schauer	Native		f1c, f2a, f2b, f4a, f4b, f4f, f5b
Myrtaceae	<i>Eucalyptus notabilis</i> Maiden	Native		3a, f3b
Myrtaceae	<i>Eucalyptus nova-anglica</i> H.Deane & Maiden	Native		f1a, f1b, f1c, f4d
Myrtaceae	<i>Eucalyptus pauciflora</i> Sieber ex Spreng.	Native		f1a, f1b, f1c, f2b
Myrtaceae	<i>Eucalyptus prava</i> L.A.S.Johnson & K.D.Hill	Native		2d, 2f, 4a, 4b, 4c, 5a, 5b, 6a, 6b, 7a, 7b, 7c, 7d, 7e, 7f, 7g, 7h, 8a, 9a, 9b, f2c, f4a, f4b, f4c, f4d, f4e, f4f, f5a, f5b
Myrtaceae	<i>Eucalyptus quinniorum</i> J.T.Hunter & J.J.Bruhl	Native	2RCi	7f, 7g, 7h, f4b, f4c
Myrtaceae	<i>Eucalyptus radiata</i> Sieber ex DC.	Native		2f, 3a, f3b
Myrtaceae	<i>Eucalyptus scias</i> L.A.S.Johnson & K.D.Hill subsp. <i>apoda</i> L.A.S.Johnson & K.D.Hill	Native	2VC-	2a, 2d, f1c
Myrtaceae	<i>Eucalyptus scoparia</i> Maiden	Native	2VCi	2d, 2f
Myrtaceae	<i>Eucalyptus sideroxylon</i> A.Cunn. ex Woolls	Native		f4d
Myrtaceae	<i>Eucalyptus subtilior</i> L.A.S.Johnson & K.D.Hill	Native		f2a, f2c, f4b
Myrtaceae	<i>Eucalyptus williamsiana</i> L.A.S.Johnson & K.D.Hill	Native	3RC	1b, f1a, f1c, f3b
Myrtaceae	<i>Eucalyptus youmanii</i> Blakely & McKie	Native	2R	7g, 7h, f2b, f4b, f4d, f5b
Myrtaceae	<i>Homoranthus biflorus</i> Craven & S.R.Jones	Native	2VC-	5a, f2c
Myrtaceae	<i>Homoranthus bornhardtensis</i> J.T.Hunter	Native	2EC	7f
Myrtaceae	<i>Homoranthus croftianus</i> J.T.Hunter	Native	2ECt	4a
Myrtaceae	<i>Homoranthus papillatus</i> Byrnes	Native	2RC-	2d, 2e
Myrtaceae	<i>Homoranthus prolixus</i> Craven & S.R.Jones	Native	2V	7c, 7f, 7g, 9a, 9b
Myrtaceae	<i>Kunzea bracteolata</i> Maiden & Betche	Native	3RC-	2a, 2d, 2e, 2f, 3a, 4a, 4b, 7a, f1c, f3b
Myrtaceae	<i>Kunzea obovata</i> Byrnes	Native		1a, 1b, 1c, 2a, 4a, 4b, 5a, 5b, 7a, 7e, 7g, f2a, f4f
Myrtaceae	<i>Kunzea opposita</i> F.Muell.	Native		2b

Myrtaceae	<i>Kunzea parvifolia</i> Schauer	Native		7a, 7f
Myrtaceae	<i>Leptospermum arachnoides</i> Gaertn.	Native		3a, 4b, 5b, f2a, f2c, f3b
Myrtaceae	<i>Leptospermum brachyandrum</i> (F.Muell.) Druce	Native		3a, 7c, f2c, f4d
Myrtaceae	<i>Leptospermum brevipes</i> F.Muell.	Native		1a, 1c, 2d, 2f, 4a, 4b, 4c, 5a, 5b, 7a, 7b, 7c, 7d, 7e, 7f, 7g, 7h, 8a, 9a, f1a, f2a, f4a, f4b, f4e, f4f, f5a, f5b
Myrtaceae	<i>Leptospermum minutifolium</i> C.T.White	Native		3a, f1c, f3b
Myrtaceae	<i>Leptospermum novae-angliae</i> Joy Thomps.	Native		1a, 1b, 1c, 2a, 2b, 2c, 2d, 2e, 2f, 3a, 4a, 4b, 5a, 5b, 7a, 7e, 7f, 7g, 7h, 9a, f3b
Myrtaceae	<i>Leptospermum parvifolium</i> Sm.	Native		f4f
Myrtaceae	<i>Leptospermum polygalifolium</i> Salisb. subsp. <i>transmontanum</i>	Native		1b, 2a, 2d, 2f, f1d, f2a, f2b, f2c, f4b, f4e, f6a
Myrtaceae	<i>Leptospermum trinervium</i> (Sm.) Joy Thomps.	Native		2a, 2d, 3a, 4b, 4c, f1c, f2a, f2c, f3b
Myrtaceae	<i>Leptospermum variabile</i> Joy Thomps.	Native		2e, 7f, f4a
Myrtaceae	<i>Lophostemon confertus</i> Peter G.Wilson & J.T.Waterh.	Native		2a, 2d
Myrtaceae	<i>Meleleuca erubescens</i> Otto	Native		f2c, f4e
Myrtaceae	<i>Micromyrtus grandis</i> J.T.Hunter	Native	2EC-	5a
Myrtaceae	<i>Micromyrtus sessilis</i> J.W.Green	Native		2b, 2f, 4a, 4b, 5b, 7a, 7g, 9a, f2a, f2c
Myrtaceae	<i>Syzigium luehmannii</i> (F.Muell.) L.A.S.Johnson	Native		2a
Nyctaginaceae	<i>Boerhavia dominii</i> Meikle & Hewson	Native		2d, 6a
Olacaceae	<i>Olax stricta</i> R.Br.	Native		4b, 5a, 5b
Oleaceae	<i>Jasminum lineare</i> R.Br.	Native		f4e
Oleaceae	<i>Notelaea linearis</i> Benth.	Native		1c, 2a, 2d, 2e, 4b, 7a, 7d, 8a, f1a, f1c, f2a, f3b, f4e, f5a
Oleaceae	<i>Notelaea microcarpa</i> R.Br.	Native		6a, 6b, 7a, 7f, 7g, 9a, f2a, f4b, f4d, f4e, f5b
Oleaceae	<i>Notelaea</i> sp. A.	Native		1a, 1b, 2a, 2b, 2c, 2f, f1d
Onagraceae	<i>Epilobium billardierianum</i> Sir. var. <i>cinereum</i> (Rich.) Raven & Engelhorn	Native		f4a
Ophioglossaceae	<i>Ophioglossum lusitanicum</i> L.	Native		6b
Orchidaceae	<i>Acianthus apprimus</i> D.L.Jones	Native		2a, 2d, f1c, f3a
Orchidaceae	<i>Acianthus collinus</i> D.L.Jones	Native		7f, f4c
Orchidaceae	<i>Acianthus exiguus</i> D.L.Jones	Native	3RC-	f1c
Orchidaceae	<i>Acianthus exsertus</i> R.Br.	Native		7f, f4c
Orchidaceae	<i>Bulbophyllum bracteatum</i> F.M.Bailey	Native		f1a
Orchidaceae	<i>Bulbophyllum elisae</i> (F.Muell.) F.Muell. ex Benth.	Native		2a, 2d, 4a
Orchidaceae	<i>Caladenia catenata</i> (Sm.) Druce	Native		7a, f1d, f2a, f4b

Orchidaceae	<i>Caladenia fuscata</i> (Rchb.f.) M.A.Clem. & D.L.Jones	Native	1a, 1c, 4b, flc
Orchidaceae	<i>Caladenia tentaculata</i> Schldl.	Native	7g, f4b, f5b
Orchidaceae	<i>Calochilus campestris</i> R.Br.	Native	1c
Orchidaceae	<i>Chiloglottis diphylla</i> R.Br.	Native	f3a
Orchidaceae	<i>Chiloglottis reflexa</i> (Labill.) Druce	Native	1c, 2e, 3a, 7g, fla, fld
Orchidaceae	<i>Chiloglottis</i> sp.	Native	2d
Orchidaceae	<i>Corybas fimbriatus</i> (R.Br.) Rchb.f.	Native	2b, fld
Orchidaceae	<i>Cryptostylis subulata</i> (Labill.) Rchb.f.	Native	1b, 1c, 2a, 2d, 2e, 2f, 3a, 4a, 4b, 7a, fld, f3b, f4b
Orchidaceae	<i>Cymbidium canaliculatum</i> R.Br.	Native	7g
Orchidaceae	<i>Cyrtostylis reniformis</i> R.Br.	Native	fld
Orchidaceae	<i>Dendrobium kingianum</i> Bidwill ex Lindl.	Native	2b, 2d, 2e, 2f, flc
Orchidaceae	<i>Dendrobium pugioforme</i> A.Cunn.	Native	2d, 2e, 3a
Orchidaceae	<i>Dendrobium speciosum</i> Sm.	Native	2a, 2d
Orchidaceae	<i>Dipodium variegatum</i> D.L.Jones & M.A.Clem.	Native	6b, flc, f2b
Orchidaceae	<i>Diuris abbreviata</i> F.Muell. ex Benth.	Native	4b, 7a, f2a
Orchidaceae	<i>Eriochilus cucullatus</i> (Labill.) Rchb.f.	Native	flc
Orchidaceae	<i>Genoplesium fimbriatum</i> (R.Br.) D.L.Jones & M.A.Clem.	Native	3a
Orchidaceae	<i>Glossodia major</i> R.Br.	Native	5b
Orchidaceae	<i>Microtis unifolia</i> (G.Forst.) Rchb.f.	Native	1c
Orchidaceae	<i>Prasophyllum brevilabre</i> (Lindl.) Hook.f.	Native	1a, 1b, 3a, 4b, f2c
Orchidaceae	<i>Prasophyllum patens</i> R.Br.	Native	flc
Orchidaceae	<i>Pterostylis boormanii</i> Rupp	Native	7g, f4c, f5b
Orchidaceae	<i>Pterostylis coccinea</i> Fitzg.	Native	5a, 7f, f4c, f4f
Orchidaceae	<i>Pterostylis daintreana</i> F.Muell. ex Benth.	Native	2a, 2d, 2f, 4b, 5a, 5b, 7b, 7d, 7g, 8a, f5a
Orchidaceae	<i>Pterostylis decurva</i> R.S.Rogers	Native	1a, 1b, flb
Orchidaceae	<i>Pterostylis fischii</i> Nicholls	Native	1a, flb
Orchidaceae	<i>Pterostylis furcata</i> Lindl.	Native	4a, f2a
Orchidaceae	<i>Pterostylis longifolia</i> R.Br.	Native	1c, 2c, 2d, 2e, 2f, 3a, 4a, 7g, fla, flc, fld, f3b, f4b
Orchidaceae	<i>Pterostylis mutica</i> R.Br.	Native	4b, 7a, 7g, f4b, f5b
Orchidaceae	<i>Pterostylis parviflora</i> R.Br.	Native	3a, 5a, fld, f2c, f4e
Orchidaceae	<i>Pterostylis praetermissa</i> M.A.Clem. & D.L.Jones	Native	7g
Orchidaceae	<i>Pterostylis reflexa</i> R.Br.	Native	7e, f2b
Orchidaceae	<i>Pterostylis setifera</i> M.A.Clem., Matthias & D.L.Jones	Native	4b, 9a, f4d

Orchidaceae	<i>Pterostylis woollsii</i> Fitzg.	Native	3RCi	9a, f4d
Orchidaceae	<i>Thelymitra pauciflora</i> R.Br.	Native		1b, 4b, f2a
Orchidaceae	<i>Thelymitra</i> sp.	Native		f1c, f3a
Oxalidaceae	<i>Oxalis chnoodes</i> Lourteig	Native		2d, 6b, 7a, 7g, 9a, 9b, f1d, f2a, f4b, f4c, f4d, f4e, f5b, f6a
Oxalidaceae	<i>Oxalis exilis</i> A.Cunn.	Native		6a, f1c, f5b
Oxalidaceae	<i>Oxalis perennans</i> Haw.	Native		6a, 7d, 8a, f1b, f1c, f2a, f2b, f4a, f4e, f4f, f5a
Oxalidaceae	<i>Oxalis radicata</i> A.Rich.	Native		9a, f4d
Phormiaceae	<i>Dianella caerulea</i> Sims var. <i>assera</i> R.J.F.Hend.	Native		2a
Phormiaceae	<i>Dianella caerulea</i> Sims var. <i>caerulea</i>	Native		1a, 2a, 2b, 2c, 2d, 3a, 4a, 4b, 5a, 5b, 7a, 7c, 7d, 7e, 7f, 7g, 8a, 9a, 9b, f1a, f1b, f1c, f1d, f2a, f2b, f2c, f3a, f3b, f4a, f4b, f4c, f4d, f4e, f5a, f5b
Phormiaceae	<i>Dianella longifolia</i> R.Br.	Native		9a
Phormiaceae	<i>Dianella revoluta</i> R.Br.	Native		1c, 2a, 2b, 2d, 2e, 2f, 4a, 4b, 4c, 5a, 5b, 6b, 7a, 7d, 7g, f1a, f1c, f1d, f2a, f2b, f2c, f3a, f4a, f4b, f4c, f4e, f4f
Phormiaceae	<i>Dianella tasmanica</i> Hook.f.	Native		1a, 1b, 1c, 2a, 2c, 3a, 4a, 4b, 7a, f1a, f1c
Phormiaceae	<i>Stypandra glauca</i> R.Br.	Native		1a, 1b, 2b, 2d, 2e, 2f, 4a, 4b, 5a, 5b, 6b, 7a, 7b, 7c, 7e, 7f, 7g, 7h, 8a, 9a, f1c, f2a, f2c
Phormiaceae	<i>Thelionema caespitosum</i> (R.Br.) R.J.F.Hend.	Native		1a, 1b, 1c, 2c, 3a, 7c, 7h, f1d
Phormiaceae	<i>Thelionema grande</i> (C.T.White) R.J.F.Hend.	Native	3RC-	2d, 2e, 2f, 4a
Phytolaccaceae	<i>Phytolacca octandra</i> L.	Introduced		1b, 2d, 2f, 3a, 6a, f4d
Pittosporaceae	<i>Billardiera scandens</i> Sm.	Native		1a, 1c, 2d, f1a, f1b, f1c, f1d, f2a, f2b, f3a, f3b
Pittosporaceae	<i>Bursaria spinosa</i> Cav. subsp. <i>obovata</i>	Native		1a, 2a, 6b, 7g, f1b, f2a, f4b, f5b
Pittosporaceae	<i>Citriobatus pauciflorus</i> Ettingsh.	Native		f1d
Pittosporaceae	<i>Rhynchospora procumbens</i> (Hook.) F.Muell.	Native		5a, 5b, 8a, f1a, f2b, f3a, f4e
Plantaginaceae	<i>Plantago debilis</i> R.Br.	Native		6b, 7e, 7g, f1b, f1c, f2a, f2b, f4b, f4d, f4f, f5b
Plantaginaceae	<i>Plantago lanceolata</i> L.	Introduced		7g, 9a, f4b
Plantaginaceae	<i>Plantago major</i> L.	Introduced		f1c
Plantaginaceae	<i>Plantago varia</i> R.Br.	Native		7d, 7f, f1b, f4a, f4c, f4e, f5a, f5b, f6a
Poaceae	<i>Agrostis avenacea</i> J.F.Gmel.	Native		7e, f2b
Poaceae	<i>Agrostis</i> sp. A	Native		2c, f1a
Poaceae	<i>Aira cupaniana</i> Guss.	Introduced		f4b, f5b
Poaceae	<i>Amphipogon strictus</i> R.Br.	Native		3a, f4a
Poaceae	<i>Aristida jerichoensis</i> (Domin) Domin ex Henrard subsp. <i>subspinulifera</i>	Native		1b, 2a, 2b, 2d, 2e, 2f, 4a, 4b, 5a, 5b, 7a, 7b, 7c, 7d, 7e, 7f, 7g, 7h, 8a, 9a, f1d, f2a, f2b, f2c, f3a, f4a, f4b, f4d, f4e, f4f, f5a, f6a

Poaceae	<i>Aristida ramosa</i> R.Br.	Native	1c, 2e, 3a, 4a, 4b, 6a, 7c, 8a, f1a, f1c, f2a, f2c, f3b, f4b, f4f, f5a, f5b
Poaceae	<i>Aristida vagans</i> Cav.	Native	6a, 6b, 7a, 7d, 7f, 7g, 8a, 9a, 9b, f1d, f4b, f4e, f5a, f5b
Poaceae	<i>Arundinella nepalensis</i> Trin.	Native	4b, 7a, 7c, 7d, 7g, 8a, 9a, f2c, f4b, f4d, f4e, f4f
Poaceae	<i>Austroanthonia linkii</i> Kunth	Native	2b, 2d, 2e, 2f, 5a, 6b, 7a, 7c, 7e, 7f, 7g, 9a, 9b, f2c, f4b, f4c
Poaceae	<i>Austroanthonia monticola</i> Vickery	Native	1a, 1b, 1c, 2c, 4a, 4b, 5a, 5b, 7a, 7b, 7d, 7f, 7g, 7h, 9a, f2b, f2c, f4b, f4f, f5a, f5b
Poaceae	<i>Austroanthonia penicillata</i> (Labill.) R.Br. ex P.Beauv.	Native	7d, f4e, f6a
Poaceae	<i>Austroanthonia pilosa</i> R.Br.	Native	1a, f1b
Poaceae	<i>Austroanthonia racemosa</i> R.Br.	Native	2e, 2f, 6a, f2a, f2c, f4b, f4e, f5b, f6a
Poaceae	<i>Austroanthonia richardsonii</i> Cashmore	Native	3a, 4a, f1d, f3b
Poaceae	<i>Austrostipa aristiglumis</i> F.Muell.	Native	7a, 7g, f1d, f2a, f4b
Poaceae	<i>Austrostipa bigeniculata</i> Hughes	Native	3a, f4d
Poaceae	<i>Austrostipa pubescens</i> R.Br.	Native	2a, 2d, f3a
Poaceae	<i>Austrostipa rudis</i> Spreng.	Native	f1b, f1d, f3a, f4e
Poaceae	<i>Austrostipa scabra</i> Lindl.	Native	3a, 4a, f1b, f1c
Poaceae	<i>Austrostipa setacea</i> R.Br.	Native	1a, 4b, 7a, 7c, 7g, f2a, f4b, f5b, f6a
Poaceae	<i>Austrostipa tuckeri</i> F.Muell.	Native	9a
Poaceae	<i>Austrostipa verticillata</i> Nees ex Spreng.	Native	f2b
Poaceae	<i>Bothriochloa decipiens</i> (Hack.) C.E.Hubb.	Native	f6a
Poaceae	<i>Bothriochloa macra</i> (Steud.) S.T.Blake	Native	6b
Poaceae	<i>Briza minor</i> L.	Introduced	f4b
Poaceae	<i>Bromus catharticus</i> Vahl	Introduced	9a, 9b
Poaceae	<i>Chionochloa pallida</i> (R.Br.) S.W.L.Jacobs	Native	4b
Poaceae	<i>Chloris truncata</i> R.Br.	Native	f2b, f4e, f6a
Poaceae	<i>Cleistochloa rigida</i> (S.T.Blake) R.D.Webster	Native	3a, 5a, 6b, 7c, 7d, 7g, 9a, 9b, f4e
Poaceae	<i>Cymbopogon obtectus</i> S.T.Blake	Native	5a, 7a, 7g, 8a, f4b
Poaceae	<i>Cymbopogon refractus</i> (R.Br.) A.Camus	Native	2d, 4a, 4b, 5a, 5b, 6a, 6b, 7a, 7b, 7c, 7d, 7e, 7f, 7g, 8a, 9a, f1c, f2a, f2b, f2c, f4a, f4b, f4c, f4d, f4e, f4f, f5a, f5b
Poaceae	<i>Cynodon dactylon</i> (L.) Pers.	Native	1b, 8a, 9a
Poaceae	<i>Danthonia induta</i> Vickery	Native	7e, f2b
Poaceae	<i>Deyeuxia mckiei</i> Vickery	Native	7f, f1c, f4c
Poaceae	<i>Deyeuxia parviseta</i> Vickery	Native	f1b
Poaceae	<i>Dichanthium setosum</i> S.T.Blake	Native	6b

Poaceae	<i>Dichelachne crinita</i> (L.f.) Hook.f.	Native	f4f
Poaceae	<i>Dichelachne micrantha</i> (Cav.) Domin	Native	2d, 4b, 4c, 7a, 7c, 7g, 7h, f2a, f2b, f2c, f4a, f4b
Poaceae	<i>Dichelachne rara</i> (R.Br.) Vickery	Native	2d, f1c, f6a
Poaceae	<i>Dichelachne sieberiana</i> Trin. & Rupr.	Native	7e, 7f, f2a, f2b, f4a, f4c
Poaceae	<i>Digitaria breviglumis</i> (Domin) Henrard	Native	1a, 1b, 1c, 2b, 2d, 2f, 3a, 4a, 4b, 5a, 5b, 7a, 7b, 7c, 7d, 7e, 7f, 7g, 7h, 8a, 9a, f1a, f1c, f2a, f2b, f2c, f4a, f4b, f4e, f5a, f6a
Poaceae	<i>Digitaria brownii</i> (Roem. & Schult.) Hughes	Native	5a, 6a, 6b, 7g, f4e, f6a
Poaceae	<i>Digitaria diffusa</i> Vickery	Native	f4f
Poaceae	<i>Digitaria longiflora</i> (Retz.) Pers.	Native	2d
Poaceae	<i>Digitaria ramularis</i> (Trin.) Henrard	Native	f4f
Poaceae	<i>Echinopogon caespitosus</i> C.E.Hubb.	Native	1a, 1b, 2a, 2d, 4b, 6a, 7a, 7g, 9a, 9b, f1d, f2a, f2b, f2c, f4a, f4b, f4c, f4d, f4e, f4f, f5b
Poaceae	<i>Echinopogon cheelii</i> C.E.Hubb.	Native	f2a, f2b, f4b, f4c, f6a
Poaceae	<i>Echinopogon intermedius</i> C.E.Hubb.	Native	f5a
Poaceae	<i>Echinopogon nutans</i> C.E.Hubb.	Native	f2a, f4a
Poaceae	<i>Echinopogon ovatus</i> (G.Forst.) P.Beauv.	Native	2d, 4a, 4b, 7a, 7d, 7g, f1a, f1b, f1c, f1d, f2a, f2b, f6a
Poaceae	<i>Enneapogon nigricans</i> (R.Br.) P.Beauv.	Native	6a, 6b, f1c, f5a
Poaceae	<i>Entolasia stricta</i> (R.Br.) Hughes	Native	1a, 1b, 1c, 2a, 2b, 2c, 2d, 2e, 2f, 3a, 4a, 4b, 4c, 5a, 5b, 6a, 6b, 7a, 7b, 7c, 7d, 7e, 7f, 7g, 7h, 8a, 9a, 9b, f1a, 1fb, f1c, f1d, f2a, f2b, f2c, f3a, f3b, f4a, f4b, f4d, f4e, f4f, f5a
Poaceae	<i>Eragrostis benthamii</i> Mattei	Native	4a
Poaceae	<i>Eragrostis brownii</i> (Kunth) Nees	Native	2c, 4a, 4b, 5a, 6a, 6b, 7a, 7f, 7g, 9a, 9b, f2a, f4a, f4d, f5b
Poaceae	<i>Eragrostis elongata</i> (Willd.) J.Jacq.	Native	2d, 4b, 7a, 7d, 7g, 8a, f2c, f4e, f4f, f5a, f6a
Poaceae	<i>Eragrostis laniflora</i> Benth.	Native	f4f
Poaceae	<i>Eragrostis leptostachya</i> (R.Br.) Steud.	Native	2b, 2d, 2f, 4b, 5a, 5b, 7d, 7g, 8a, f5a, f5b
Poaceae	<i>Eragrostis mollybdea</i> Vickery	Native	7e
Poaceae	<i>Eragrostis tenuifolia</i> (A.Rich.) Hochst. ex Steud.	Native	1a, 1c, f3b, f4a
Poaceae	<i>Eulalia aurea</i> (Bory) Kunth	Native	7g, 8a, 9b, f5b
Poaceae	<i>Imperata cylindrica</i> (L.) P.Beauv.	Native	2d, 7g, f1a, f1b, f1c, f1d, f2a, f2b, f2c, f3b, f4a, f4b, f4d, f4f
Poaceae	<i>Lolium multiflorum</i> Lam.	Introduced	1c
Poaceae	<i>Microlaena stipoides</i> (Labill.) R.Br.	Native	1a, 1b, 2d, 6a, 6b, 7a, 7d, 7e, 7f, 7g, 9b, f1b, f1d, f2a, f2b, f4a, f4b, f4e, f4f, f5b
Poaceae	<i>Panicum antidotale</i> Retz.	Introduced	f4d
Poaceae	<i>Panicum effusum</i> R.Br.	Native	1c, 2c, 2e, f2c, f4e, f4f

Poaceae	<i>Panicum miliaceum</i> L.	Introduced		6a, 6b, 9b
Poaceae	<i>Panicum simile</i> Domin	Native		5b, 7g
Poaceae	<i>Paspalidium constrictum</i> (Domin) C.E.Hubb.	Native		1a, 1c, 2a, 2b, 2d, 3a, 4a, 4b, 5a, 5b, 6a, 6b, 7a, 7c, 7e, 7g, 7h, 8a, 9a, 9b, f1a, f1b, f1d, f2a, f2b, f2c, f4a, f4b, f4e, f4f, f5a, f5b, f6a
Poaceae	<i>Paspalum dilatatum</i> Poir.	Introduced		f2a, f6a
Poaceae	<i>Paspalum distichum</i> L.	Native		1c, f4f
Poaceae	<i>Poa fax</i> J.H.Willis & Court	Native		6b, 7g, f5b
Poaceae	<i>Poa labillardieri</i> Steud.	Native		2d, f1c
Poaceae	<i>Poa sieberiana</i> Spreng.	Native		1a, 1b, 1c, 2a, 2c, 2d, 2e, 3a, 4a, 4b, 7a, 7b, 7c, 7f, 7g, 7h, 9a, f1a, f1b, f1c, f1d, f2a, f2b, f2c, f3b, f4a, f4b, f4c, f4d, f5b
Poaceae	<i>Secale cereale</i> L.	Introduced		f6a
Poaceae	<i>Setaria pumila</i> (Poir.) Roem. & Schult.	Introduced		f5a
Poaceae	<i>Setaria verticillata</i> (L.) P.Beauv.	Introduced		2e, 9a, f1c
Poaceae	<i>Sorghum leiocladum</i> (Hack.) C.E.Hubb.	Native		f1a, f1b
Poaceae	<i>Sporobolus creber</i> De Nardi	Native		7d, 7f, 8a, f4a, f4b, f4e, f5a, f6a
Poaceae	<i>Tetrarrhena juncea</i> R.Br.	Native		2a, 2e, 3a, f1a, f1c, f3b
Poaceae	<i>Thanondia longifolia</i> R.Br.	Native		2e, 4b, f1c, f2a, f3a, f4a, f4b, f5b
Poaceae	<i>Themeda triandra</i> Forsskal	Native		2a, 2b, 2d, 2e, 3a, 6b, 7f, f1a, f1b, f1c, f1d, f2a, f2b, f3b, f4a, f4c, f4d
Poaceae	<i>Triodia scariosa</i> N.T.Burb.	Native		5a, 6b, 7d
Poaceae	<i>Tripogon loliiformis</i> (F.Muell.) C.E.Hubb.	Native		1c, 2d, 2f, 3a, 4a, 4b, 5a, 5b, 6a, 6b, 7a, 7b, 7c, 7d, 7e, 7f, 7g, 8a, 9a, 9b, f2c, f4f, f5a
Poaceae	<i>Vulpia bromoides</i> (L.) Gray	Introduced		f5b
Polygalaceae	<i>Comesperma ericinum</i> DC.	Native		1a, 2a, 3a, f1d, f2c, f3b
Polygalaceae	<i>Comesperma sylvestre</i> Lindl.	Native		2c
Polygonaceae	<i>Acetosella vulgaris</i> Fourr.	Introduced		1b, 1c
Polygonaceae	<i>Muehlenbeckia costata</i> m.s.	Native	3VCa	1a, 1b, 2a, 2d, 2e, 2f
Polygonaceae	<i>Muehlenbeckia rhyticarya</i> F.Muell. ex Benth.	Native		2a
Polygonaceae	<i>Rumex brownii</i> Campd.	Native		7e, 7f, 7g, 7h, 9b, f4a, f4b, f5b, f6a
Polypodiaceae	<i>Platynerium bifurcatum</i> (Cav.) C.Chr.	Native		2a, 2d, 7a
Polypodiaceae	<i>Pyrrosia confluens</i> (R.Br.) Ching	Native		2a, f1c
Polypodiaceae	<i>Pyrrosia rupestris</i> (R.Br.) Ching	Native		1a, 1b, 1c, 2a, 2c, 2d, 2f, 7a, f1a, f1c
Portulacaceae	<i>Calandrinia eremaea</i> Ewart	Native		1b, 2e, 3a, 4b, 4c, 6b, 7a, 7c, 7e, 7f, 7g, 7h, 9a, f1c, f4c, f5b
Portulacaceae	<i>Calandrinia pickeringii</i> A.Gray	Native		2d, 2e, 2f, 4a
Portulacaceae	<i>Calandrinia</i> sp.	Native	RK	1c

Portulacaceae	<i>Portulaca bicolor</i> F.Muell.	Native		1b, 1c, 5a, 6a, 6b, 7a, 7d, 7f, 7g, 8a, 9a, 9b
Portulacaceae	<i>Portulaca flifolia</i> F.Muell.	Native		6b, 7d, 8a, 9b, f2a, f5a, f5b
Portulacaceae	<i>Portulaca oleracea</i> L.	Native		6a, 9b
Primulaceae	<i>Anagallis arvensis</i> L.	Introduced		6a, 6b, 7e, 7g, f5b
Proteaceae	<i>Banksia integrifolia</i> L.f. subsp. A	Native		1c, 2c, f1a, f1b, f1c, f1d, f2a, f2b, f4b
Proteaceae	<i>Banksia spinulosa</i> Sm. var. <i>collina</i> (R.Br.) A.S.George	Native		1a, 1b, 1c, 2a, 2e, 3a, f1a, f1c, f1d, f3a, f3b
Proteaceae	<i>Conospermum burgessiorum</i> L.A.S.Johnson & McGill.	Native	3RCa	f3b
Proteaceae	<i>Conospermum taxifolium</i> C.F.Gaertn.	Native		f1c
Proteaceae	<i>Grevillea acerata</i> McGill.	Native	2RC-	3a, f3b
Proteaceae	<i>Grevillea floribunda</i> R.Br.	Native		5a, 5b, f4f
Proteaceae	<i>Grevillea linearifolia</i> (Cav.) Druce	Native		4b, f2c, f3b
Proteaceae	<i>Grevillea mucronulata</i> R.Br.	Native		3a
Proteaceae	<i>Grevillea ramosissima</i> C.F.W.Meissn.	Native		7c, f4d
Proteaceae	<i>Grevillea scortechinii</i> (F.M.Bailey) F.Muell. var. <i>sarmentosa</i> (Blakely & McKie) McGill.	Native	2VC-	f1a
Proteaceae	<i>Grevillea triternata</i> R.Br.	Native		5a, 5b, f2c, f4e, f4f
Proteaceae	<i>Hakea dactyloides</i> (Gaertn.) Cav.	Native		1a, 1b, 1c, 2a, 2b, 2d, 3a, 5a, 5b, 7e, f1c, f1d, f2b, f3a, f3b
Proteaceae	<i>Hakea decurrens</i> R.Br.	Native		5b, f2c
Proteaceae	<i>Hakea eriantha</i> R.Br.	Native		2d, f1a, f1c, f1d, f2a, f3a
Proteaceae	<i>Hakea macrorrhyncha</i> W.R.Barker	Native	3RC-	3a, 4b
Proteaceae	<i>Isopogon petiolaris</i> R.Br.	Native		3a, 5a, 5b, f2c, f3b
Proteaceae	<i>Lomatia fraseri</i> R.Br.	Native		1a, 1b, f1a, f1b, f1c, f2a, f2b
Proteaceae	<i>Lomatia silaifolia</i> (Sm.) R.Br.	Native		1a, 1c, 2a, 2d, 2e, f1a, f1c, f1d, f2a, f2b, f2c, f3a, f3b, f4b
Proteaceae	<i>Persoonia cornifolia</i> A.Cunn. ex R.Br.	Native		1a, 1b, 1c, 2a, 2d, 2e, 2f, 3a, 4b, 4c, 5a, 7a, 7b, 7c, 7d, 7e, 7g, 7h, 9a, 9b, f1a, f1b, f1c, f2a, f2b, f2c, f4a, f4b, f4c, f4d, f4e, f4f, f5b
Proteaceae	<i>Persoonia daphnoides</i> R.Br.	Native	3RC-	f1c
Proteaceae	<i>Persoonia fastigiata</i> R.Br.	Native		f2b
Proteaceae	<i>Persoonia oleoides</i> L.A.S.Johnson & P.H.Weston	Native		1b, 2a, 2d, f1a, f1c, f1d, f3a
Proteaceae	<i>Persoonia procumbens</i> L.A.S.Johnson & P.H.Weston	Native	2RC-	f1a
Proteaceae	<i>Persoonia rufa</i> L.A.S.Johnson & P.H.Weston	Native	2RCa	2a, 2b, 3a, f1d, f3a, f3b
Proteaceae	<i>Persoonia sericea</i> R.Br.	Native		5a, 5b, f1d, f2a, f2b, f2c, f4c
Proteaceae	<i>Persoonia tenuifolia</i> R.Br.	Native		2d, f1c, f2a, f2c, f4b

Proteaceae	<i>Persoonia terminalis</i> L.A.S.Johnson & P.H.Weston subsp. <i>recurva</i> L.A.S.Johnson & P.H.Weston	Native	2RC	5b, f2c
Proteaceae	<i>Persoonia terminalis</i> L.A.S.Johnson & P.H.Weston subsp. <i>terminalis</i>	Native	2RC	4b, 4c, 5b, f2c
Proteaceae	<i>Petrophile canescens</i> A.Cunn. ex R.Br.	Native		2d, 2e, 3a, f1a, f1c, f2c, f3a, f3b
Proteaceae	<i>Telopea aspera</i> Crisp & P.H.Weston	Native	2RCa	f3b
Ranunculaceae	<i>Clematis aristata</i> R.Br. ex Ker Gawl.	Native		f1a, f1d, f2a
Ranunculaceae	<i>Clematis glycinoides</i> DC.	Native		6b, 7g, f1c, f1d, f2a, f4b, f4e, f5b
Ranunculaceae	<i>Ranunculus lappaceus</i> Sm.	Native		2d
Ranunculaceae	<i>Ranunculus sessiliflorus</i> R.Br. ex DC.	Native		6b, 7g, 9a, f1d, f4a, f4b, f5a, f5b
Restionaceae	<i>Empodisma minus</i> (Hook.f.) L.A.S.Johnson & D.F.Cutler	Native		1b, 1c, 2a, 2b, 3a, f1d
Restionaceae	<i>Lepyrodia anarthria</i> F.Muell.	Native		3a
Restionaceae	<i>Lepyrodia leptocaulis</i> L.A.S.Johnson & O.D.Evans	Native		2a, 3a, 4a, 7c, f1d
Restionaceae	<i>Lepyrodia scariosa</i> R.Br.	Native		3a, 4b
Restionaceae	<i>Restio fimbriatus</i> L.A.S.Johnson & O.D.Evans	Native		1a, f2b, f3b
Restionaceae	<i>Restio stenocoleus</i> L.A.S.Johnson & O.D.Evans	Native		f3a
Rhamnaceae	<i>Alphitona excelsa</i> (Fenzl) Benth.	Native		6a, 7a, 8a, f5a
Rhamnaceae	<i>Cryptandra amara</i> Sm. subsp. <i>amara</i>	Native		9a, f1a
Rhamnaceae	<i>Cryptandra amara</i> Sm. subsp. <i>floribunda</i> F.Muell. ex Maiden & Betche	Native		1b, 1c, 4b, 5a, 5b, 7a, 7b, 7c, 7d, 7e, 7f, 7g, 7h, 9a, 9b, f1a, f2c
Rhamnaceae	<i>Cryptandra lanosiflora</i> F.Muell.	Native	3RCa	1b, 1c, 3a, 4a
Rhamnaceae	<i>Pomaderris andromedifolia</i> A.Cunn.	Native		2a, 2b, 8a, f5a
Rhamnaceae	<i>Pomaderris lanigera</i> (Andrews) Sims	Native		2e, f1c
Rhamnaceae	<i>Pomaderris nitidula</i> (Benth.) N.A.Wakef.	Native		1c, f2a
Rhamnaceae	<i>Pomaderris notata</i> S.T.Blake	Native	2RC-	2d
Rosaceae	<i>Acaena novae-zelandiae</i> Kirk	Native		7g, f1a, f1b, f1c, f2a, f2b, f4b, f4f, f5b
Rosaceae	<i>Rosa rubiginosa</i> L.	Introduced		7g
Rosaceae	<i>Rubus fruticosus</i> L.	Native		7g, 9b, f1c, f2a, f4b
Rosaceae	<i>Rubus parvifolius</i> L.	Native		7a, 7e, f1a, f1b, f1c, f2a, f4f, f6a
Rubiaceae	<i>Canthium odoratum</i> (G.Forst.) Seemen	Native		6a, 7a, 7d, 7g
Rubiaceae	<i>Galium aparine</i> L.	Introduced		f4b, f5b
Rubiaceae	<i>Galium ciliare</i> Hook.f.	Native		f1a
Rubiaceae	<i>Galium gaudichaudii</i> DC.	Native		8a, f4d, f5a

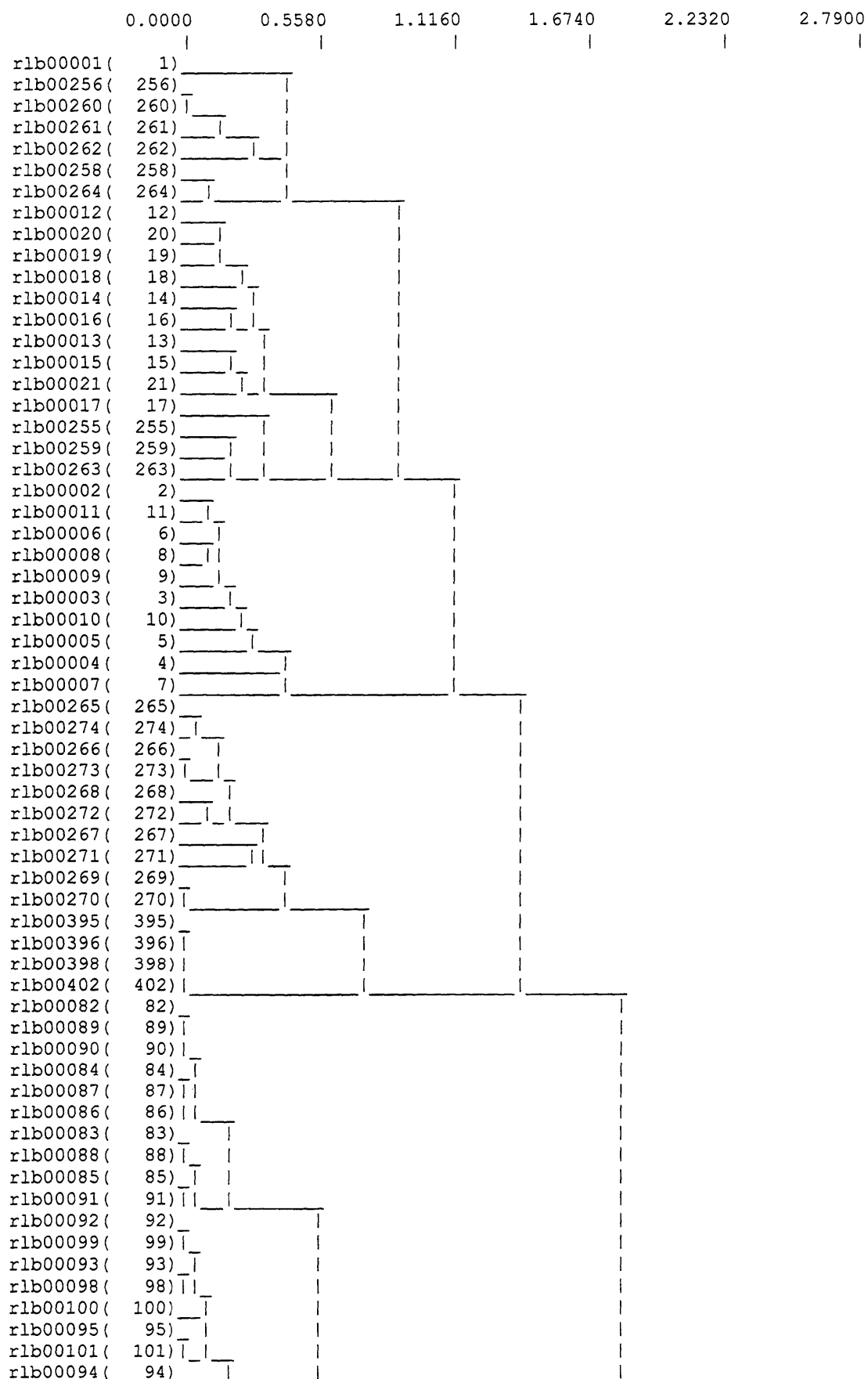
Rubiaceae	<i>Galium migrans</i> Ehrend. & McGill.	Native		6b, 7a, 7b, 7g, 7h, f1b, f1c, f2a, f4b, f4c, f4f, f5a, f5b
Rubiaceae	<i>Galium propinquum</i> A.Cunn.	Native		f1b, f1c, f2a, f2b, f4a, f4b, f4c, f4e
Rubiaceae	<i>Opercularia aspera</i> Gaertn.	Native		1a, 7d, 7g, f1d, f2a, f2b, f2c, f4b, f4c, f4d, f4e, f4f
Rubiaceae	<i>Opercularia hispida</i> Spreng.	Native		1a, 2c, 4b, 5b, 7d, 7f, 7g, 9a, f1a, f1b, f1c, f1d, f2a, f2b, f3b, f4b, f4c, f4e
Rubiaceae	<i>Pomax umbellata</i> (Gaertn.) Benth.	Native		1a, 1c, 2d, 2f, 3a, 4a, 4b, 4c, 5a, 5b, 7a, 7b, 7c, 7d, 7e, 7f, 7g, 9a, 9b, f1b, f1c, f1d, f2a, f2b, f2c, f3b, f4b, f4c, f4d, f4e, f4f
Rutaceae	<i>Boronia algida</i> F.Muell.	Native		1c, 3a, 4b, f2b, f2c, f3b
Rutaceae	<i>Boronia amabilis</i> S.T.Blake	Native		2d
Rutaceae	<i>Boronia anemonifolia</i> A.Cunn.	Native		1a, 1c, 2b, 7a, f3b
Rutaceae	<i>Boronia anethifolia</i> A.Cunn. ex Endl.	Native		1b, 2a, 3a, 4a, 4c, 5a, 7e, 7f, f2a, f3b
Rutaceae	<i>Boronia granitica</i> Maiden & Betche	Native	3VC-	4b, 4c, 5a, 7e, 9a, f2c
Rutaceae	<i>Boronia microphylla</i> Sieber ex Rchb.	Native		3a, 4b, f2a, f2b, f3b
Rutaceae	<i>Boronia boliviensis</i> m.s.	Native	2E	4a
Rutaceae	<i>Correa reflexa</i> (Labill.) Vent.	Native		1a, 2a, 2b, 6b, 7e, 7f, 7g, 7h, 8a, f1d, f2a, f2b, f4b, f4c, f4d, f5a
Rutaceae	<i>Eriostemon australasius</i> Pers.	Native		3a
Rutaceae	<i>Eriostemon myoporoides</i> DC. subsp. <i>conduplicatus</i> P.G.Wilson	Native		4b, 5a, 9a, 9b
Rutaceae	<i>Eriostemon myoporoides</i> DC. subsp. <i>epilosus</i> P.G.Wilson	Native	3RC-	1b, 2a, 2d, 2e, 2f, 4a, 7a
Rutaceae	<i>Phebalium ambiens</i> (F.Muell.) Maiden & Betche	Native	3RC-	1a, 2d, 2e, 2f, 4b
Rutaceae	<i>Phebalium dentatum</i> Sm.	Native	RK	2b, 3a
Rutaceae	<i>Phebalium glandulosum</i> Hook.	Native	2VCi	4b
Rutaceae	<i>Phebalium ozothamnoides</i> F.Muell.	Native	RK	1a
Rutaceae	<i>Phebalium rotundifolium</i> (A.Cunn. ex Endl.) Benth.	Native	3RC-	2d, 2f, 4b, 4c, 5a, 5b, 9a
Rutaceae	<i>Phebalium squamulosum</i> Vent.	Native		2a, 2d, 2f, 3a, 4b, 4c, 7d
Rutaceae	<i>Zieria arborescens</i> Sims	Native		f3b
Rutaceae	<i>Zieria cytisoides</i> Sm.	Native		1c, 2b, 6b, 7a, 7b, 7f
Rutaceae	<i>Zieria fraseri</i> Hook.	Native		1a, 1c, 3a, 4a, 5a, 7a, 7e, f1d, f2a, f2c
Rutaceae	<i>Zieria laevigata</i> Bonpl.	Native		1a, 1b, 4b
Rutaceae	<i>Zieria odorifera</i> m.s.	Native	3RCi	5a, 7a, 7c, 9a, 9b, f2c, f4d
Santalaceae	<i>Choretrum candollei</i> F.Muell. ex Benth.	Native		2a, f2b, f3a, f3b
Santalaceae	<i>Choretrum glomeratum</i> R.Br.	Native		f4e
Santalaceae	<i>Choretrum pauciflorum</i> DC.	Native		f1a

Santalaceae	<i>Choretrum</i> sp. A	Native		3a, f1d
Santalaceae	<i>Exocarpus cupressiformis</i> Labill.	Native		1a, 1c, 2a, 2b, 2d, 2e, 2f, 4a, 4b, 7a, 7e, 7f, 7g, f1a, f1b, f1c, f2a, f2b, f2c, f4c, f4d
Santalaceae	<i>Exocarpus strictus</i> R.Br.	Native		2a, f3b
Santalaceae	<i>Leptomeria drupacea</i> (Labill.) Druce	Native		f1c, f1d, f3b
Santalaceae	<i>Thesium australe</i> R.Br.	Native	3VCi	f4a
Sapindaceae	<i>Dodonaea boroniifolia</i> G.Don	Native		5b, 7g, f4e
Sapindaceae	<i>Dodonaea falcata</i> J.G.West	Native		5b, f2c, f4e
Sapindaceae	<i>Dodonaea hirsuta</i> (Maiden & Betche) Maiden & Betche	Native	3RC-	2d, 4b, 5a, f2c
Sapindaceae	<i>Dodonaea stenophylla</i> F.Muell.	Native	RK TSC	9a
Sapindaceae	<i>Dodonaea triquetra</i> J.C.Wendl.	Native		7d, 7g, f1d
Sapindaceae	<i>Dodonaea viscosa</i> Jacq.	Native		1a, 1b, 1c, 2d, 2e, 2f, 4b, 5a, 5b, 6b, 7a, 7b, 7c, 7e, 7f, 7g, f1c, f2a, f2c, f4a, f4b, f4c, f4e, f4f, f5b
Schizaeaceae	<i>Schizaea bifida</i> Willd.	Native		2a, 2e
Schizaeaceae	<i>Schizaea dichotoma</i> (L.) Sm.	Native		f3b
Scrophulariaceae	<i>Derwentia arcuata</i> B.G.Briggs & Ehrend.	Native		f1a, f1b, f4e
Scrophulariaceae	<i>Derwentia derwentiana</i> (Andrews) B.G.Briggs & Ehrend.	Native		f2b, f4f
Scrophulariaceae	<i>Derwentia perfoliata</i> (R.Br.) B.G.Briggs & Ehrend	Native		f4c
Scrophulariaceae	<i>Gratiola peruviana</i> L.	Introduced		6a, 8a, f2a, f4b
Scrophulariaceae	<i>Verbascum thapsus</i> L.	Introduced		7g, f4b
Scrophulariaceae	<i>Veronica calycina</i> R.Br.	Native		2d, 7g, 7h, f1a, f1b, f2a, f2b, f4a, f4b, f4c, f4e, f5b
Simaroubaceae	<i>Ailanthus altissima</i> (Mill.) Swingle	Introduced		f4d
Sinopteridaceae	<i>Cheilanthes distans</i> (R.Br.) Mett.	Native		2d, 6a, 6b, 7d, 7f, 7g, 8a, f4b, f5a, f5b
Sinopteridaceae	<i>Cheilanthes sieberi</i> Kunze subsp. <i>sieberi</i>	Native		1a, 1b, 1c, 2b, 2d, 2e, 2f, 3a, 4a, 4b, 5a, 5b, 6a, 6b, 7a, 7b, 7c, 7d, 7e, 7f, 7g, 7h, 8a, 9a, 9b, f1c, f2a, f2c, f4a, f4b, f4c, f4d, f4e, f4f, f5a, f5b
Sinopteridaceae	<i>Pellaea falcata</i> (R.Br.) Fée var. <i>falcata</i>	Native		1a, 7g, f4b, f4c, f4f
Sinopteridaceae	<i>Pellaea falcata</i> (R.Br.) Fée var. <i>nana</i> Hook.	Native		f1c
Smilacaceae	<i>Smilax australis</i> R.Br.	Native		1b, 2a, 3a, f1a, f1b, f1c, f1d, f3a
Smilacaceae	<i>Smilax glycyphylla</i> Sm.	Native		2a, f1c, f1d, f3b
Solanaceae	<i>Cyphanthera albicans</i> (A.Cunn.) Miers subsp. <i>albicans</i>	Native	RK	1c, 7f
Solanaceae	<i>Datura stamonium</i> L.	Introduced		8a

Solanaceae	<i>Solanum campanulatum</i> R.Br.	Native		2d, f1c, f2a, f4e, f6a
Solanaceae	<i>Solanum cinereum</i> R.Br.	Native		2d, 6b, 9b, f1c, f1d, f2a
Solanaceae	<i>Solanum cleistogamum</i> Symon	Native		f5a
Solanaceae	<i>Solanum elegans</i> Dunal ex Poir.	Native		2d, f1c, f2c, f4c, f4e
Solanaceae	<i>Solanum opacum</i> A.Braum & Bouche	Native		1a, 7e, 9b, f1b, f4d
Solanaceae	<i>Solanum prinophyllum</i> Dunal	Native		f1b
Stackhousiaceae	<i>Stackhousia monogyna</i> Labill.	Native		1a, 2d, f1b, f1d, f3a, f5b
Stackhousiaceae	<i>Stackhousia muricata</i> Lindl.	Native		2d
Stackhousiaceae	<i>Stackhousia viminea</i> Sm.	Native		1a, 1b, 1c, 2b, 2d, 2e, 4a, 4b, 6a, 7e, 9a, f2a, f2b, f4a, f4b, f4d, f4e, f4f
Sterculiaceae	<i>Brachychiton populneus</i> (Schott & Endl.) R.Br.	Native		6b, 7g, f4b, f5a
Sterculiaceae	<i>Lasiopetalum ferrugineum</i> Sm. ex Andrews var. <i>cordatum</i> Benth.	Native		1b
Stylidiaceae	<i>Stylidium graminifolium</i> Sw. ex Willd.	Native		2b, 2e, 2f, f1a, f1b, f1c, f2a, f2b, f2c, f3a
Stylidiaceae	<i>Stylidium laricifolium</i> A.Rich.	Native		2a, 2b, 2d, 2e, 2f, 3a, 4a, 4b, 8a, f2a, f2b, f3b
Thymelaeaceae	<i>Pimelea linifolia</i> Sm.	Native		1a, 1b, 1c, 2a, 2d, 2e, 2f, 3a, 5a, 5b, 7a, 7d, 7g, f1b, f1c, f2a, f3a, f3b, f4b, f4c, f4e, f5b, f6a
Tremandraceae	<i>Tetratheca thymifolia</i> Sm.	Native		f1d
Urticaceae	<i>Urtica incisa</i> Poir.	Native		7e, 7g, 7h, 8a, 9b, f4f, f5b
Verbenaceae	<i>Verbena bonariensis</i> L.	Introduced		2d
Verbenaceae	<i>Verbena rigida</i> Spreng.	Introduced		7g, f4f, f6a
Violaceae	<i>Hybanthus monopetalus</i> (Schult.) Domin	Native		1b, 5a, f3a
Violaceae	<i>Viola betonicifolia</i> Sm.	Native		2d, f1a, f1b, f1c, f1d, f2a, f2b, f3b, f4a, f4b, f4f
Violaceae	<i>Viola hederacea</i> Labill.	Native		2d, 4b, f1d, f2a, f4a, f4b
Viscaceae	<i>Notothixos cornifolius</i> Oliv.	Native		6b
Winteraceae	<i>Tasmannia glaucifolia</i> J.B.Williams	Native	3VCi	1a
Winteraceae	<i>Tasmannia stipitata</i> (Vickery) A.C.Sm.	Native		2c
Xanthorrhoeaceae	<i>Xanthorrhoea acaulis</i> (A.T.Lee) D.J.Bedford	Native		3a, 7c, f4d
Xanthorrhoeaceae	<i>Xanthorrhoea glauca</i> D.J.Bedford	Native		1a, 2a, 3a, f1c, f1d, f3b
Xanthorrhoeaceae	<i>Xanthorrhoea johnsonii</i> A.T.Lee	Native		2d, 4b, 5a, 5b, 7a, 7d, 7g, 8a, f1a, f1c, f2a, f2b, f2c, f4b, f4e, f4f, f5a, f5b
Zamiaceae	<i>Macrozamia heteromera</i> C.Moore	Native		f4c

Full dendrogram of all 402 temporal fire trial plots.

01/29/99 22:42:14.51 dend Bald Rock Fire Trials



rlb00097(97)				
rlb00096(96)				
rlb00173(173)				
rlb00181(181)				
rlb00175(175)				
rlb00177(177)				
rlb00178(178)				
rlb00174(174)				
rlb00176(176)				
rlb00182(182)				
rlb00179(179)				
rlb00180(180)				
rlb00257(257)				
rlb00042(42)				
rlb00049(49)				
rlb00046(46)				
rlb00050(50)				
rlb00044(44)				
rlb00047(47)				
rlb00043(43)				
rlb00051(51)				
rlb00048(48)				
rlb00045(45)				
rlb00163(163)				
rlb00164(164)				
rlb00169(169)				
rlb00170(170)				
rlb00172(172)				
rlb00166(166)				
rlb00171(171)				
rlb00165(165)				
rlb00168(168)				
rlb00167(167)				
rlb00217(217)				
rlb00218(218)				
rlb00222(222)				
rlb00224(224)				
rlb00219(219)				
rlb00221(221)				
rlb00225(225)				
rlb00223(223)				
rlb00388(388)				
rlb00220(220)				
rlb00226(226)				
rlb00232(232)				
rlb00233(233)				
rlb00229(229)				
rlb00227(227)				
rlb00234(234)				
rlb00228(228)				
rlb00230(230)				
rlb00231(231)				
rlb00397(397)				
rlb00387(387)				
rlb00389(389)				
rlb00393(393)				
rlb00386(386)				
rlb00390(390)				
rlb00391(391)				
rlb00394(394)				
rlb00401(401)				
rlb00400(400)				
rlb00361(361)				
rlb00385(385)				
rlb00392(392)				
rlb00399(399)				
rlb00022(22)				
rlb00023(23)				

rlb00028	(28)		
rlb00029	(29)		
rlb00025	(25)		
rlb00031	(31)		
rlb00030	(30)		
rlb00037	(37)		
rlb00034	(34)		
rlb00339	(339)		
rlb00340	(340)		
rlb00345	(345)		
rlb00346	(346)		
rlb00348	(348)		
rlb00342	(342)		
rlb00347	(347)		
rlb00343	(343)		
rlb00341	(341)		
rlb00344	(344)		
rlb00329	(329)		
rlb00335	(335)		
rlb00336	(336)		
rlb00330	(330)		
rlb00338	(338)		
rlb00337	(337)		
rlb00331	(331)		
rlb00332	(332)		
rlb00333	(333)		
rlb00334	(334)		
rlb00024	(24)		
rlb00027	(27)		
rlb00306	(306)		
rlb00133	(133)		
rlb00140	(140)		
rlb00134	(134)		
rlb00139	(139)		
rlb00135	(135)		
rlb00137	(137)		
rlb00138	(138)		
rlb00141	(141)		
rlb00136	(136)		
rlb00142	(142)		
rlb00026	(26)		
rlb00297	(297)		
rlb00295	(295)		
rlb00298	(298)		
rlb00305	(305)		
rlb00296	(296)		
rlb00301	(301)		
rlb00302	(302)		
rlb00299	(299)		
rlb00303	(303)		
rlb00032	(32)		
rlb00036	(36)		
rlb00040	(40)		
rlb00033	(33)		
rlb00041	(41)		
rlb00035	(35)		
rlb00039	(39)		
rlb00038	(38)		
rlb00300	(300)		
rlb00304	(304)		
rlb00383	(383)		
rlb00307	(307)		
rlb00308	(308)		
rlb00367	(367)		
rlb00374	(374)		
rlb00368	(368)		
rlb00372	(372)		
rlb00375	(375)		

rlb00369(369)	_____		
rlb00371(371)	___ _		
rlb00373(373)	_____		
rlb00123(123)	_____		
rlb00125(125)	___ _		
rlb00127(127)	_		
rlb00128(128)	_		
rlb00131(131)	___ _		
rlb00124(124)	___ _		
rlb00129(129)	___ _		
rlb00132(132)	___ _		
rlb00126(126)	___ _		
rlb00130(130)	___ _		
rlb00052(52)	___ _		
rlb00057(57)	___ _		
rlb00060(60)	___ _		
rlb00056(56)	___ _		
rlb00058(58)	___ _		
rlb00059(59)	___ _		
rlb00055(55)	___ _		
rlb00061(61)	___ _		
rlb00053(53)	___ _		
rlb00054(54)	___ _		
rlb00183(183)	_____		
rlb00189(189)	___ _		
rlb00186(186)	___ _		
rlb00190(190)	___ _		
rlb00192(192)	___ _		
rlb00193(193)	___ _		
rlb00195(195)	___ _		
rlb00196(196)	___ _		
rlb00198(198)	___ _		
rlb00184(184)	___ _		
rlb00350(350)	___ _		
rlb00185(185)	___ _		
rlb00191(191)	___ _		
rlb00188(188)	___ _		
rlb00187(187)	___ _		
rlb00194(194)	___ _		
rlb00197(197)	___ _		
rlb00351(351)	___ _		
rlb00355(355)	___ _		
rlb00352(352)	___ _		
rlb00354(354)	___ _		
rlb00358(358)	___ _		
rlb00356(356)	___ _		
rlb00357(357)	___ _		
rlb00365(365)	___ _		
rlb00359(359)	___ _		
rlb00364(364)	___ _		
rlb00349(349)	___ _		
rlb00353(353)	___ _		
rlb00370(370)	___ _		
rlb00360(360)	___ _		
rlb00366(366)	___ _		
rlb00362(362)	___ _		
rlb00363(363)	___ _		
rlb00199(199)	___ _		
rlb00208(208)	___ _		
rlb00211(211)	___ _		
rlb00215(215)	___ _		
rlb00202(202)	___ _		
rlb00206(206)	___ _		
rlb00379(379)	___ _		
rlb00200(200)	___ _		
rlb00204(204)	___ _		
rlb00207(207)	___ _		
rlb00201(201)	___ _		

rlb00205 (205)	__				
rlb00203 (203)	_____				
rlb00209 (209)	_____				
rlb00377 (377)	_____				
rlb00384 (384)	__				
rlb00378 (378)	_____				
rlb00380 (380)	_____				
rlb00376 (376)	_____				
rlb00381 (381)	_____				
rlb00382 (382)	_____				
rlb00210 (210)	_____				
rlb00213 (213)	_____				
rlb00216 (216)	__				
rlb00214 (214)	__				
rlb00212 (212)	_____				
rlb00062 (62)	_____				
rlb00070 (70)	_____				
rlb00066 (66)	_____				
rlb00065 (65)	_____				
rlb00063 (63)	_____				
rlb00068 (68)	_____				
rlb00071 (71)	_____				
rlb00069 (69)	_____				
rlb00074 (74)	_____				
rlb00077 (77)	_____				
rlb00064 (64)	_____				
rlb00067 (67)	_____				
rlb00072 (72)	_____				
rlb00080 (80)	_____				
rlb00073 (73)	_____				
rlb00078 (78)	_____				
rlb00079 (79)	_____				
rlb00075 (75)	_____				
rlb00081 (81)	_____				
rlb00076 (76)	_____				
rlb00235 (235)	_____				
rlb00243 (243)	_____				
rlb00239 (239)	_____				
rlb00236 (236)	_____				
rlb00244 (244)	_____				
rlb00241 (241)	_____				
rlb00242 (242)	_____				
rlb00238 (238)	_____				
rlb00240 (240)	_____				
rlb00250 (250)	_____				
rlb00247 (247)	_____				
rlb00237 (237)	_____				
rlb00245 (245)	_____				
rlb00252 (252)	_____				
rlb00246 (246)	_____				
rlb00251 (251)	_____				
rlb00249 (249)	_____				
rlb00253 (253)	_____				
rlb00248 (248)	_____				
rlb00254 (254)	_____				
rlb00102 (102)	_____				
rlb00103 (103)	_____				
rlb00108 (108)	_____				
rlb00106 (106)	_____				
rlb00110 (110)	_____				
rlb00109 (109)	_____				
rlb00105 (105)	_____				
rlb00111 (111)	_____				
rlb00104 (104)	_____				
rlb00107 (107)	_____				
rlb00112 (112)	_____				
rlb00114 (114)	_____				
rlb00117 (117)	_____				

rlb00116(116)	___			
rlb00120(120)	__ _			
rlb00113(113)	___			
rlb00118(118)	___			
rlb00119(119)	__			
rlb00115(115)	___			
rlb00121(121)	_____			
rlb00320(320)	_____			
rlb00122(122)	_____			
rlb00275(275)	_____			
rlb00283(283)	_____			
rlb00276(276)	_____			
rlb00281(281)	___			
rlb00282(282)	___			
rlb00284(284)	___			
rlb00277(277)	_____			
rlb00278(278)	_____			
rlb00279(279)	_____			
rlb00280(280)	_____			
rlb00285(285)	_____			
rlb00293(293)	___			
rlb00294(294)	___			
rlb00289(289)	___			
rlb00291(291)	___			
rlb00292(292)	___ _			
rlb00290(290)	___			
rlb00287(287)	_____			
rlb00288(288)	_____			
rlb00286(286)	_____			
rlb00143(143)	___			
rlb00147(147)	___			
rlb00151(151)	___			
rlb00145(145)	___			
rlb00148(148)	___			
rlb00144(144)	___			
rlb00149(149)	___			
rlb00146(146)	___			
rlb00152(152)	___ _			
rlb00150(150)	_____			
rlb00153(153)	_____			
rlb00160(160)	___			
rlb00161(161)	___			
rlb00154(154)	___			
rlb00159(159)	___ _			
rlb00156(156)	___			
rlb00157(157)	___			
rlb00162(162)	___ _			
rlb00155(155)	___			
rlb00158(158)	___			
rlb00314(314)	_____			
rlb00309(309)	_____			
rlb00317(317)	_____			
rlb00318(318)	_____			
rlb00312(312)	_____			
rlb00311(311)	_____			
rlb00310(310)	_____			
rlb00315(315)	_____			
rlb00316(316)	_____			
rlb00313(313)	_____			
rlb00319(319)	_____			
rlb00325(325)	___			
rlb00326(326)	___			
rlb00322(322)	___			
rlb00327(327)	___			
rlb00328(328)	___ _			
rlb00323(323)	___			
rlb00321(321)	___			
rlb00324(324)	_____			

0.0000	0.5580	1.1160	1.6740	2.2320	2.7900
--------	--------	--------	--------	--------	--------

Publications

At the time of submission, a number of articles had been published that include the bulk of some chapters and parts of others.

Chapter 3

Hunter, J.T. (*in review*) How insular are ecological 'islands'? An example from the granite outcrops of the New England Batholith of Australia. *Proceedings of the Royal Society of Queensland*.

Chapter 4

A majority of Chapter 2 has been published as:

Hunter, J.T. & Clarke, P.J. (1988) The vegetation of granitic outcrop communities on the New England Batholith of eastern Australia. *Cunninghamia* 5: 547-618.

Chapter 9

Some issues raised in regards to fire have been published:

Hunter, J.T. (1998) The botany of Howell, New South Wales: a tin granite flora (revisited). *The Victorian Naturalist* 115: 94-99.

Hunter, J.T. (1998) Notes on the occurrence of *Monotaxis macrophylla* Benth. (Euphorbiaceae), with particular reference to New South Wales. *The Queensland Naturalist* 36: 21-24.

Hunter, J.T. (1998) Granite outcrop vegetation of Wilsons Promontory. *The Victorian Naturalist* 115: 322-325.

Hunter, J.T., Fallavollita, E. & Hunter, V.H. (1998) Observations on the ecology of *Muehlenbeckia costata* m.s. (Polygonaceae), a rare fire-ephemeral species occurring on the New England Batholith of northern New South Wales and southern Queensland. *The Victorian Naturalist* 115: 9-17.

Miscellaneous

Miscellaneous taxonomic papers arising from new species described by the author based largely on discoveries and made during this project:

- Hunter, J.T. (1998) Two new rare species of *Homoranthus* (Myrtaceae: Chamelaucieae) from the Northern Tablelands of New South Wales. *Telopea* 8: 35-40.
- Hunter, J.T. (1997) *Acacia williamsiana* (Fabaceae: Juliflorae): A new granitic outcrop species from northern New South Wales. *Journal of the Royal Society of Western Australia* 80: 235-237.
- Hunter, J.T. (1996) *Micromyrtus grandis* (Myrtaceae) a new species from New South Wales. *Telopea* 7: 77-81.
- Hunter, J.T. & Bruhl, J.J. (1999) Two new species of *Eucalyptus* (Myrtaceae) from northern New South Wales (series *Viminales* section *Maidenaria*). *Telopea* 8: 257-263.

New distribution records:

- Hunter, J.T. (1996) A further record of *Leucopogon cicatricatus* J.Powell (Epacridaceae) for Queensland. *The Queensland Naturalist* 34: 20-21.
- Hunter, J.T. (1996) A further record of *Homoranthus lunatus* Craven & S.R. Jones (Myrtaceae) for northern New South Wales. *The Queensland Naturalist* 34: 24-25.
- Hunter, J.T. (1996) Significant range extensions for 10 species of vascular plants in northern New South Wales. *Austrobaileya* 4: 691-694.
- Richards, P.G. & Hunter, J.T. (1997) Range extensions for several restricted plant species, Northern Tablelands, New South Wales. *Cunninghamia* 5: 275-279.

Anecdotal observations

- Hunter, J.T. (1995) Some observations on the fire responses of two rare species in the Girraween and Bald Rock National Parks. *The Queensland Naturalist* 33: 5-6.
- Hunter, J.T. (1994) Interesting vegetation on rocky outcrops in north eastern New South Wales. *Armidale Tree Group Newsletter* 61: 10-13