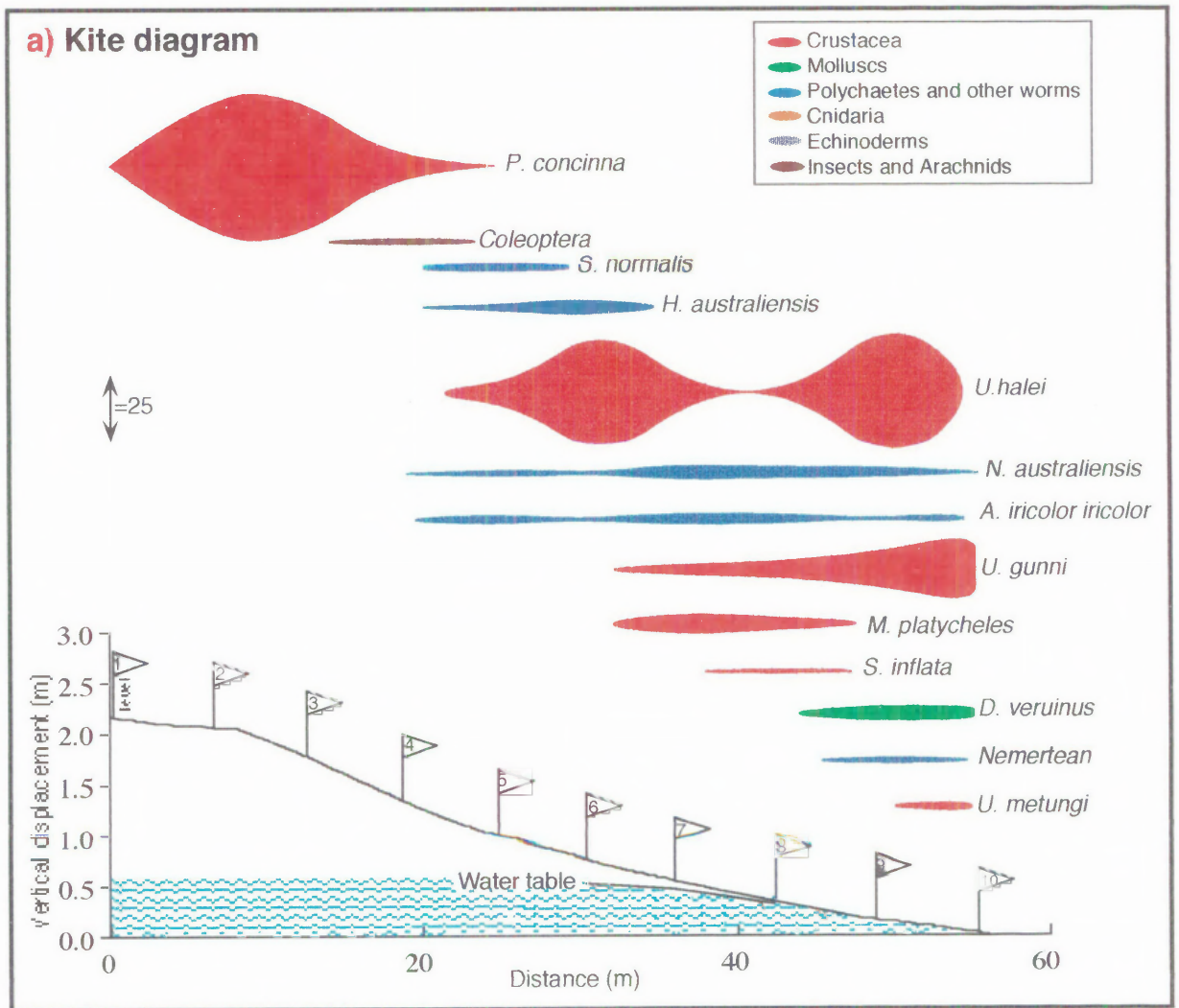


Figure 12.19:
Hearn's Lake beach macrofaunal distribution (Warm Temperate)
 [At low tide: 6th January, 1994]

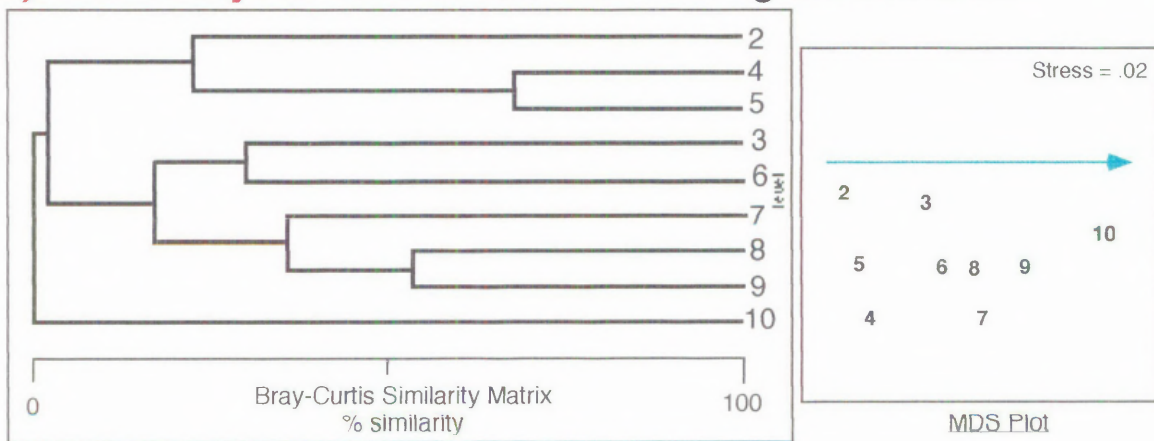


(continued next page.....)

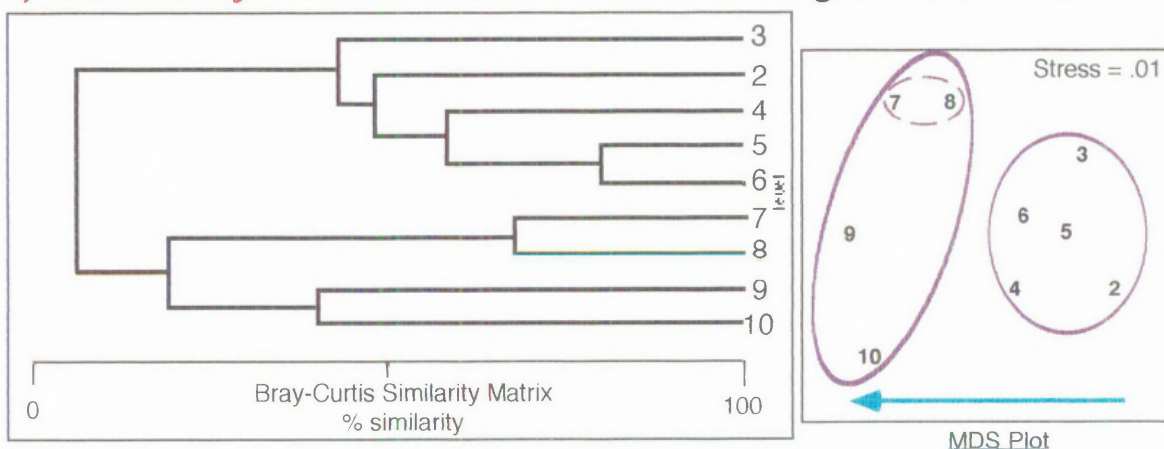
Figure 12.19 (continued)..

Hearn's Lake beach macrofaunal distribution (Warm Temperate)

b) Community: Untransformed data dendrogram and MDS



c) Community: Presence/absence data dendrogram and MDS



d) Crustacea: Fourth root transformed data dendrogram and MDS

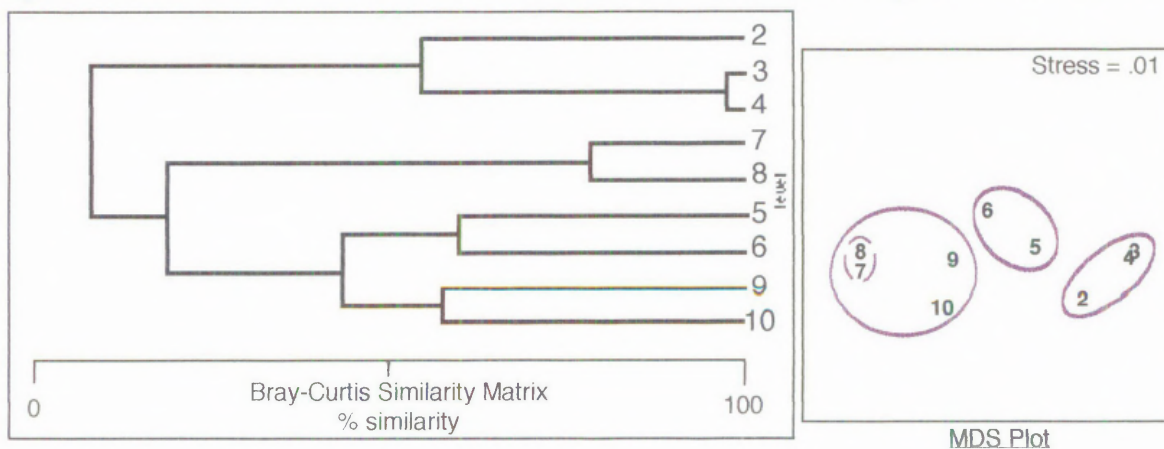
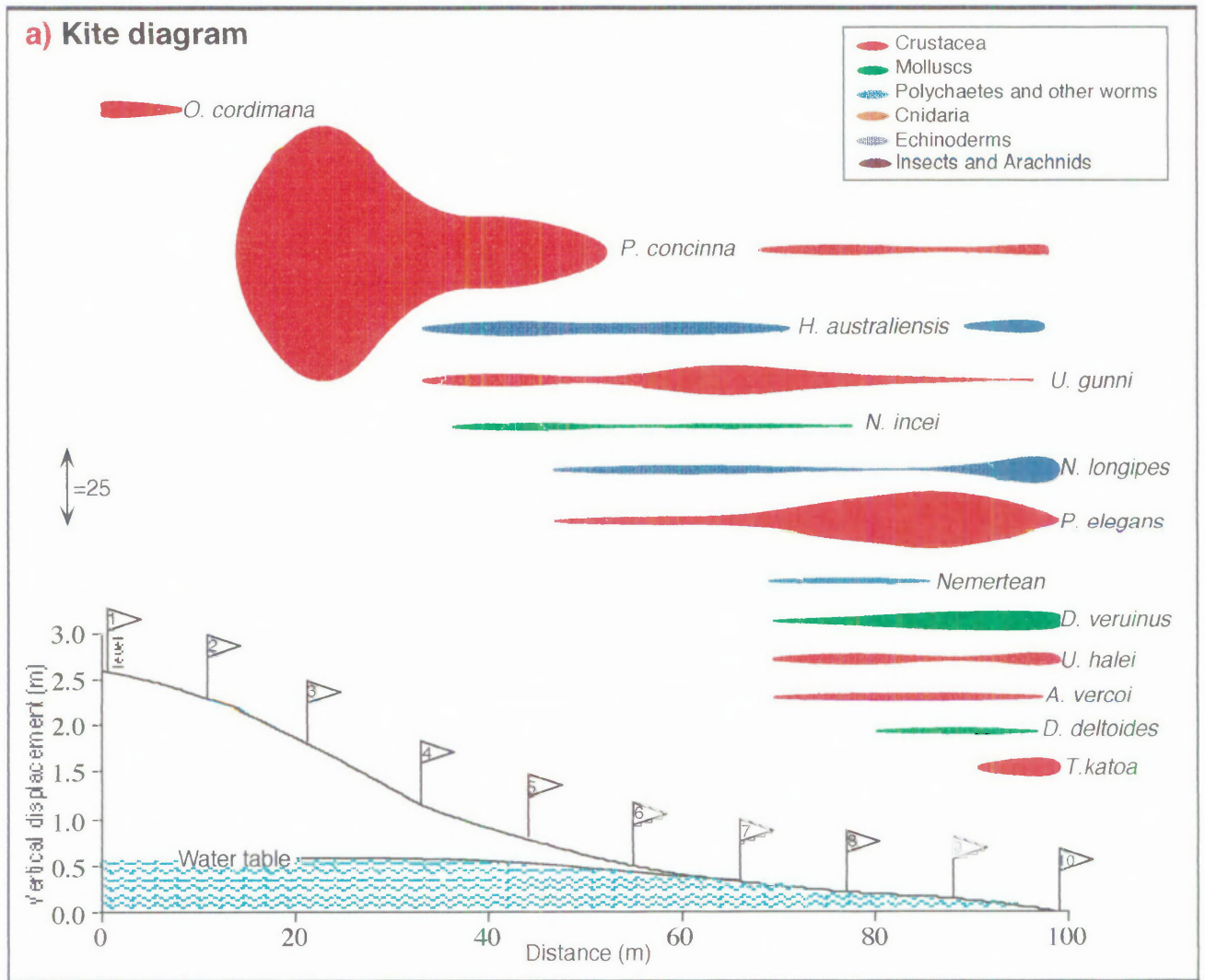


Figure 12.20:
Cudgen beach macrofaunal distribution (Warm Temperate)

[At low tide: 14th January, 1994]



(continued next page.....)

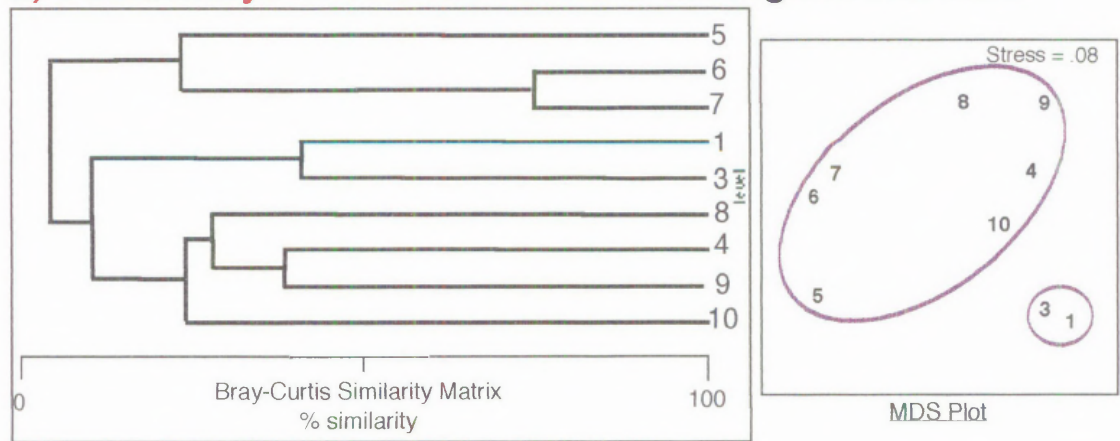
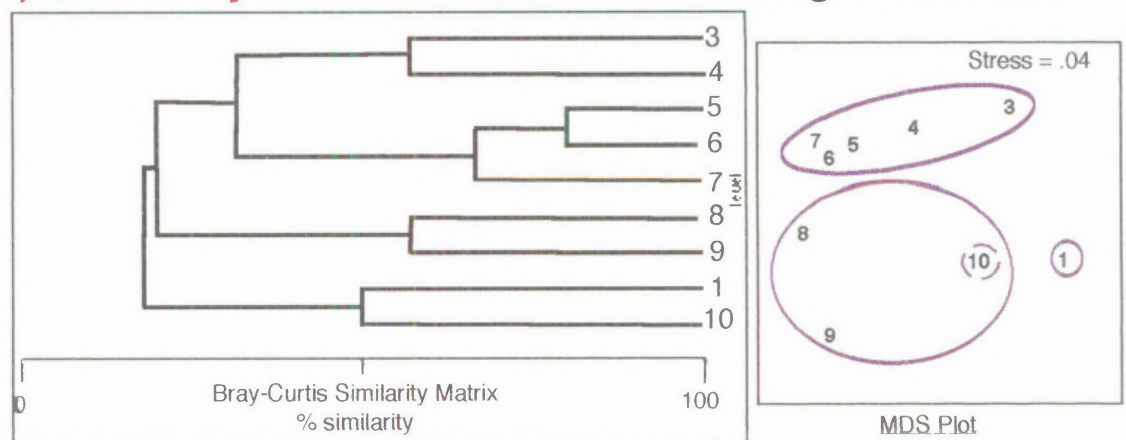
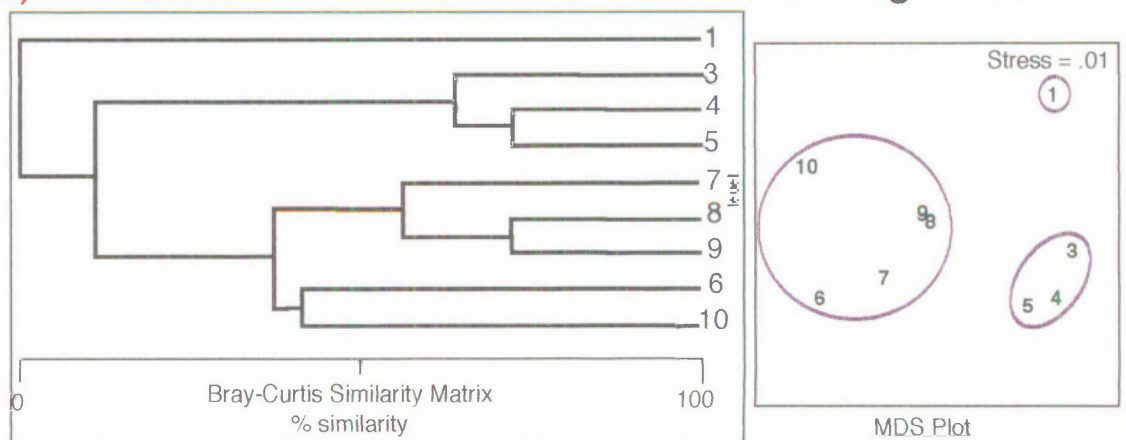
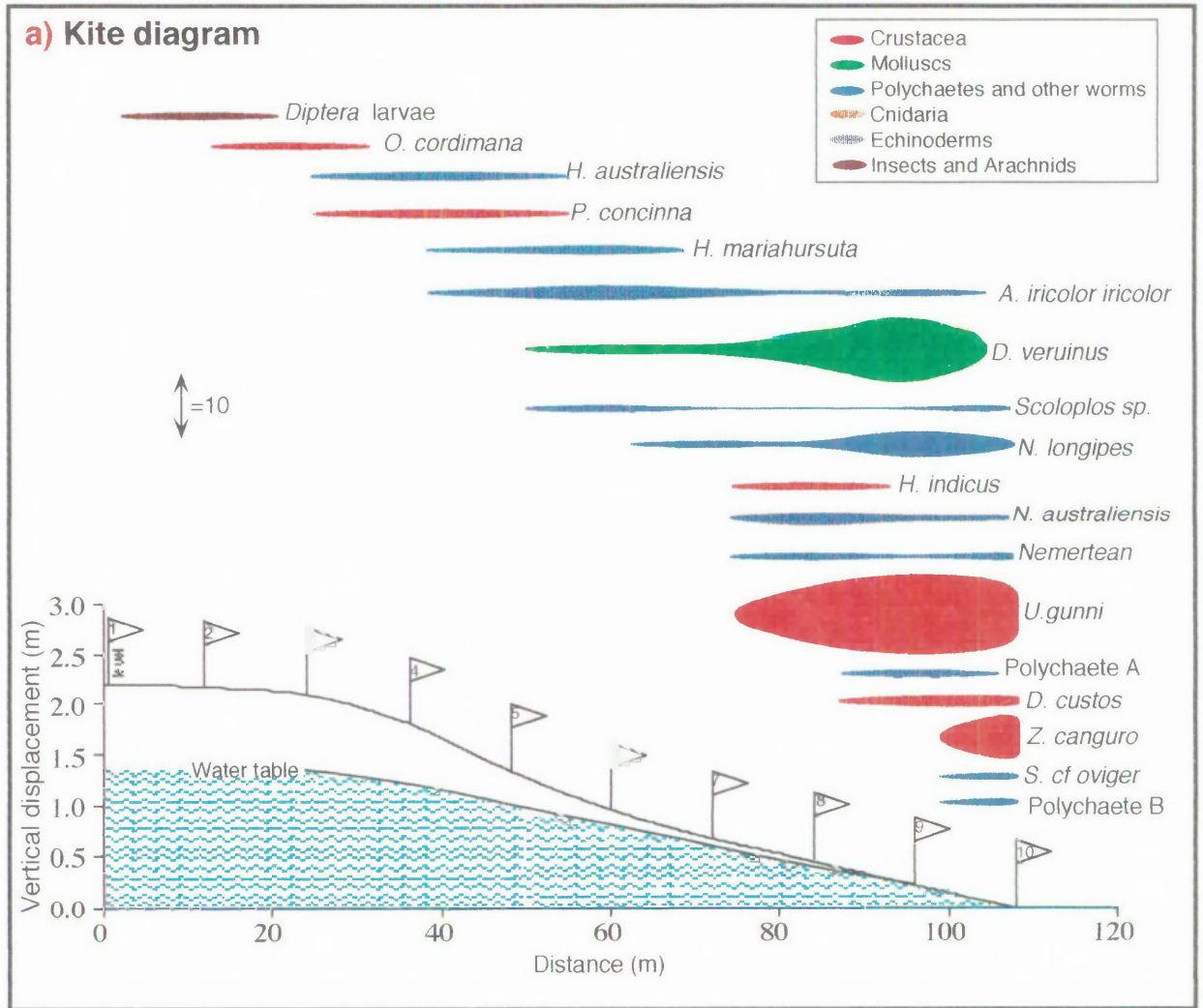
Figure 12.20 (continued)..**Cudgen beach macrofaunal distribution (Warm Temperate)****b) Community: Untransformed data dendrogram and MDS****c) Community: Presence/absence data dendrogram and MDS****d) Crustacea: Fourth root transformed data dendrogram and MDS**

Figure 12.21:

Boambee beach macrofaunal distribution (Warm Temperate)

[At low tide: 12th January, 1994]



(continued next page.....)

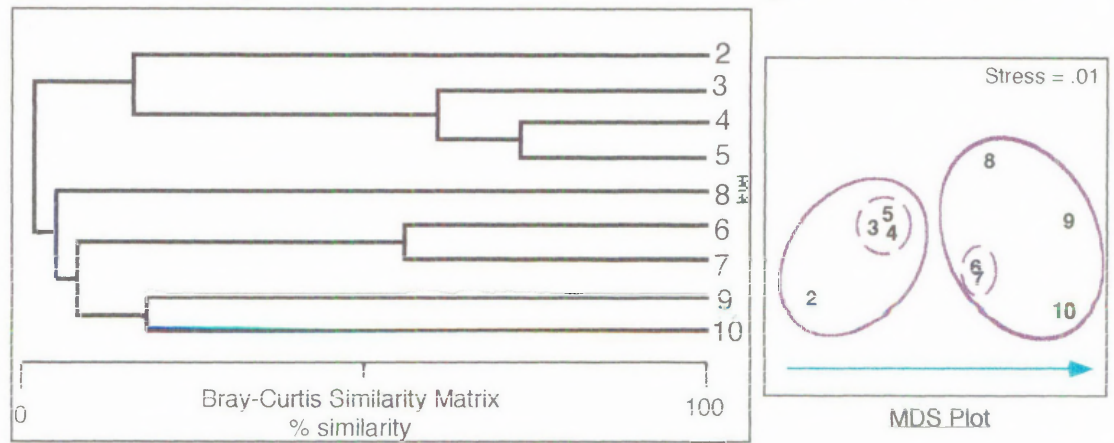
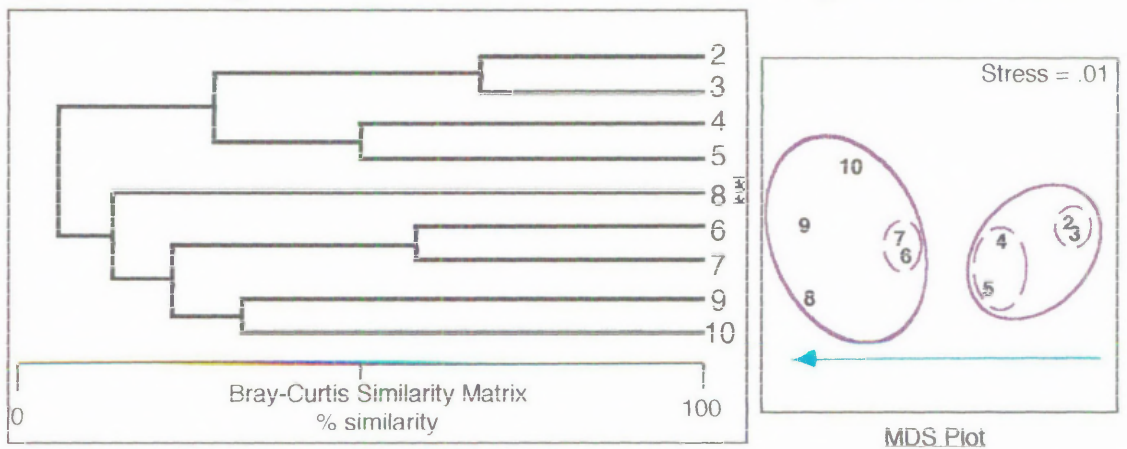
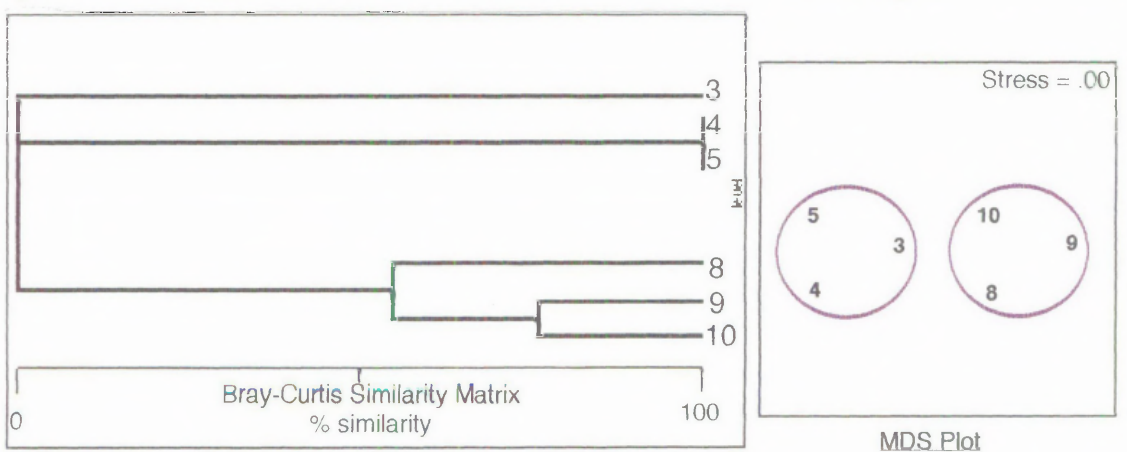
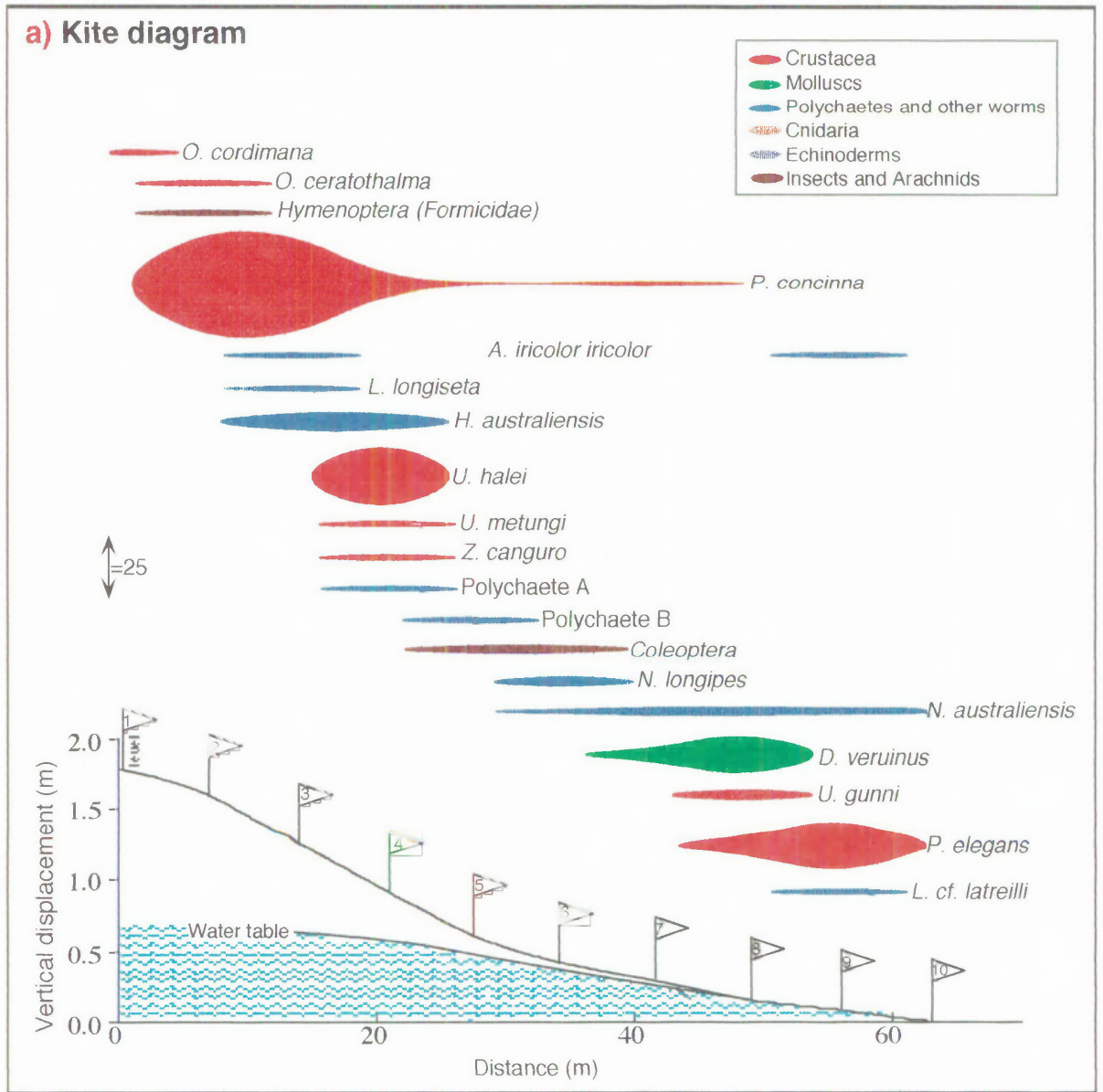
Figure 12.21 (continued)..**Boambee beach macrofaunal distribution (Warm Temperate)****b) Community: Untransformed data dendrogram and MDS****c) Community: Presence/absence data dendrogram and MDS****c) Crustacea: Fourth root transformed data dendrogram and MDS**

Figure 12.22:

Moonee beach macrofaunal distribution (Warm Temperate)

[At low tide: 8th January, 1994]



(continued next page.....)

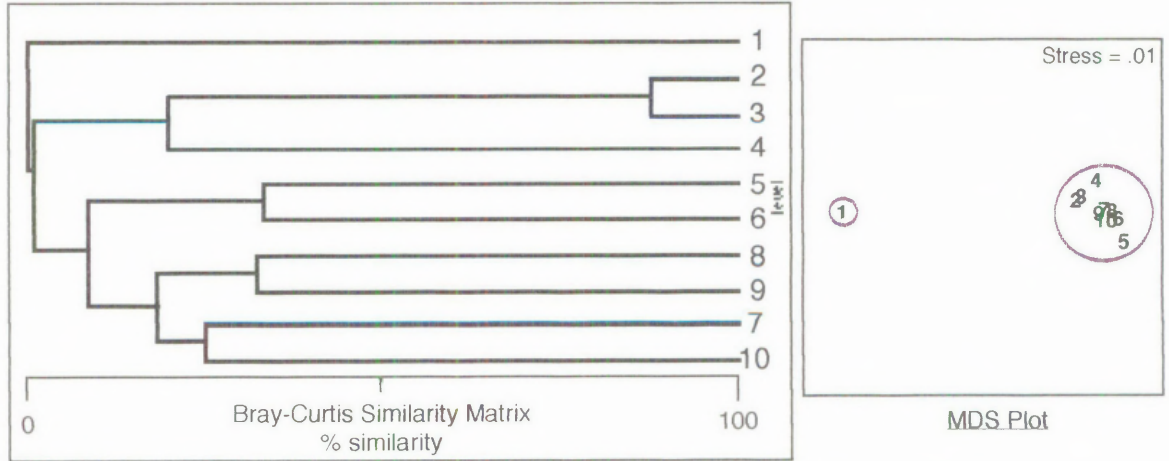
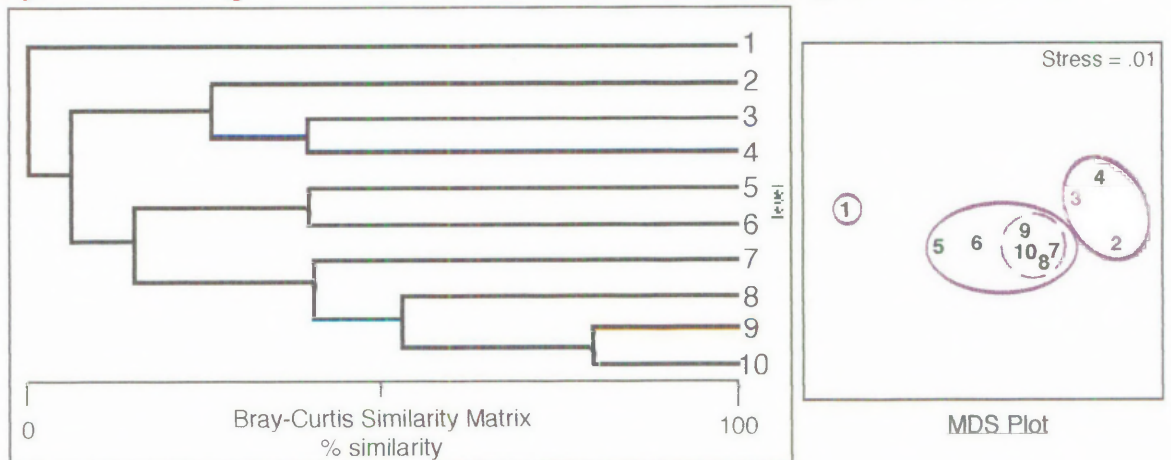
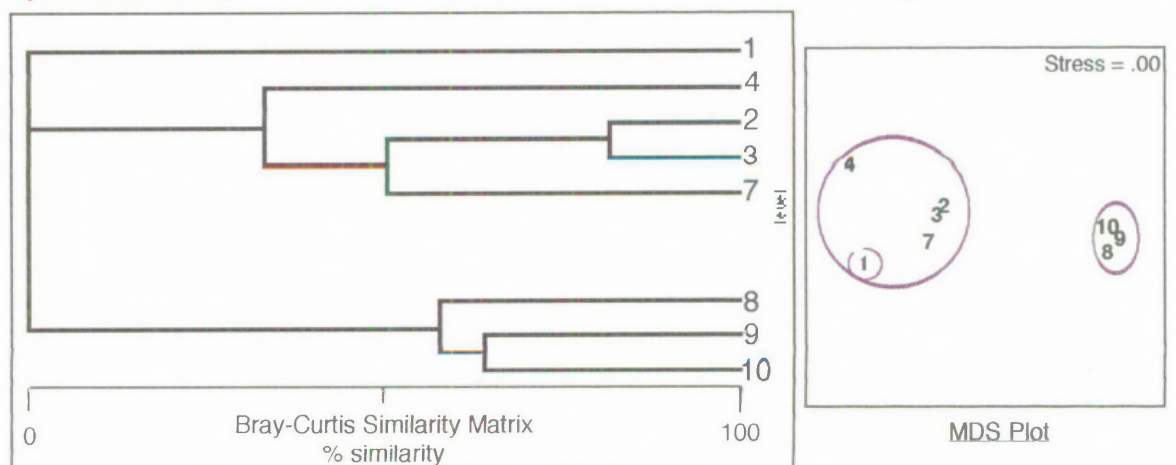
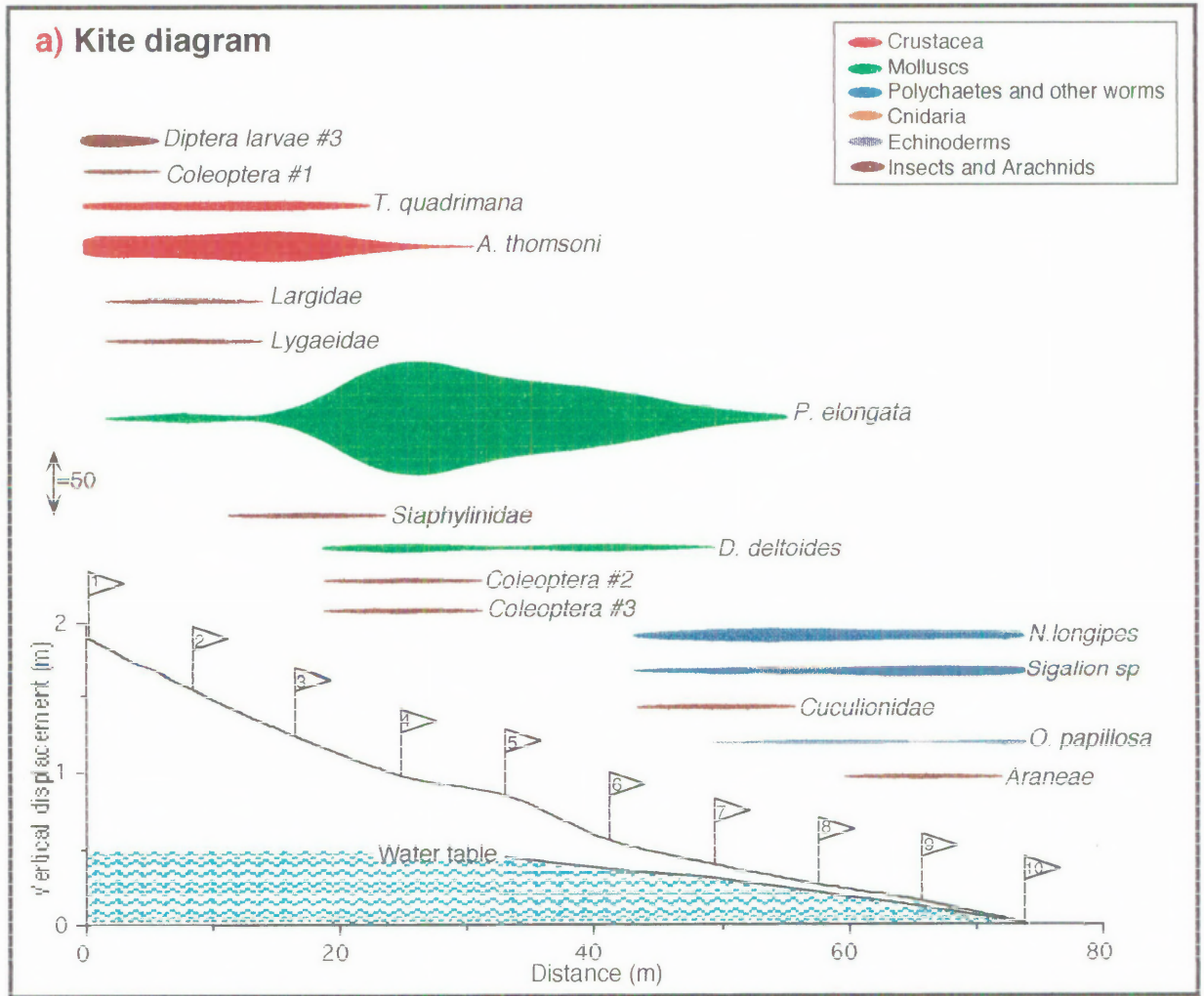
Figure 12.22 (continued)..**Moonee beach macrofaunal distribution** (Warm Temperate)**b) Community: Untransformed data dendrogram and MDS****c) Community: Presence/absence data dendrogram and MDS****d) Crustacea: Fourth root transformed data dendrogram and MDS**

Figure 12.23:

Granites beach macrofaunal distribution (Cool Temperate)

[At low tide: 5th January, 1995]

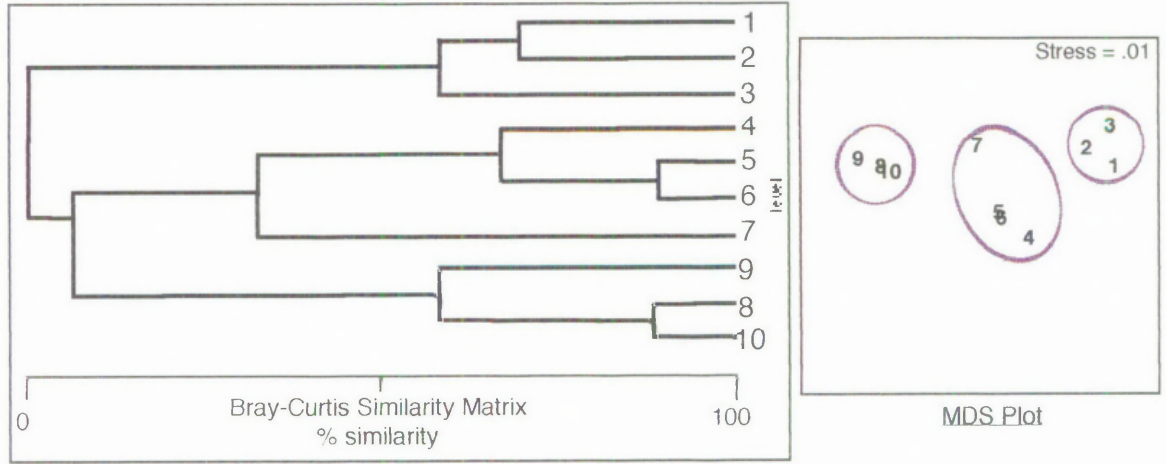


(continued next page.....)

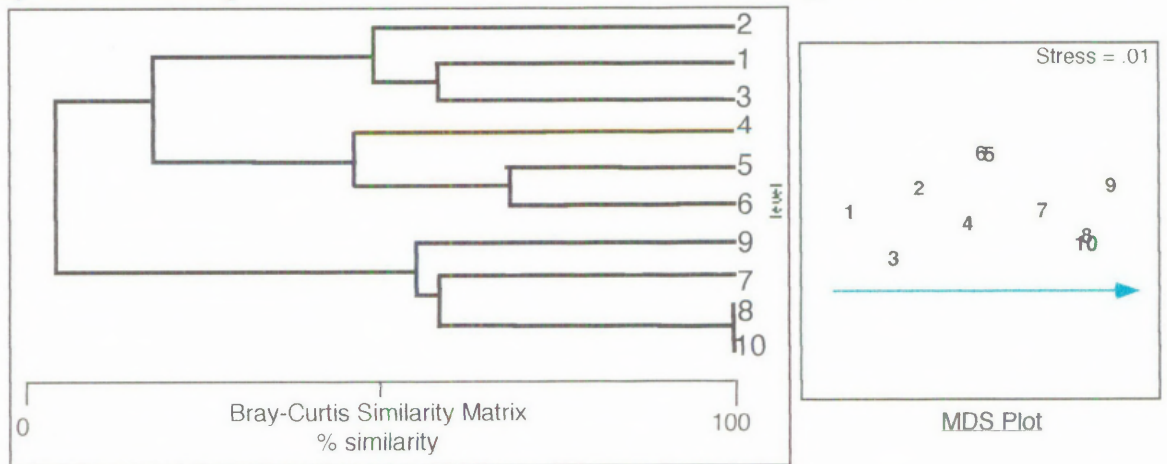
Figure 12.23 (continued)..

Granites beach macrofaunal distribution (Cool Temperate)

b) Community: Untransformed data dendrogram and MDS



c) Community: Presence/absence data dendrogram and MDS



c) Crustacea: Fourth root transformed data dendrogram and MDS

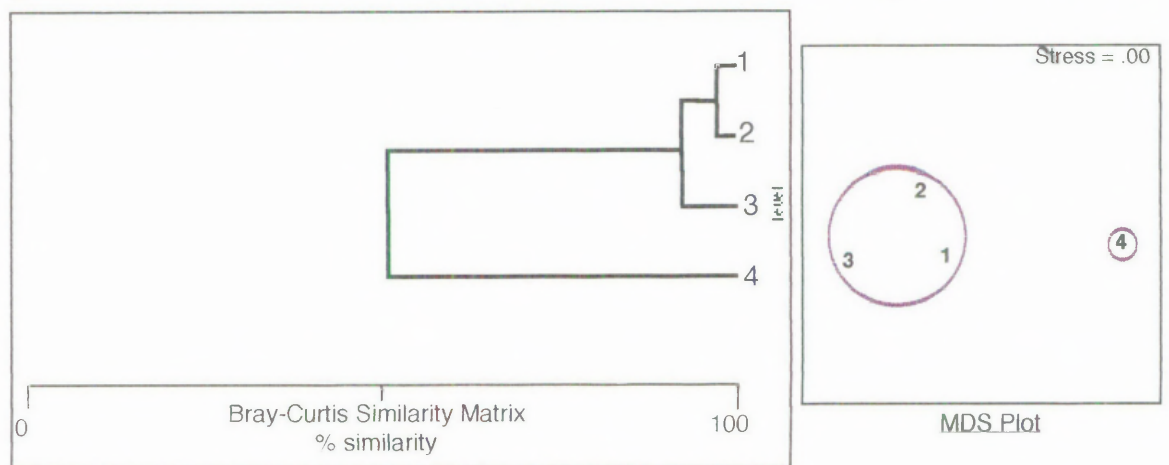
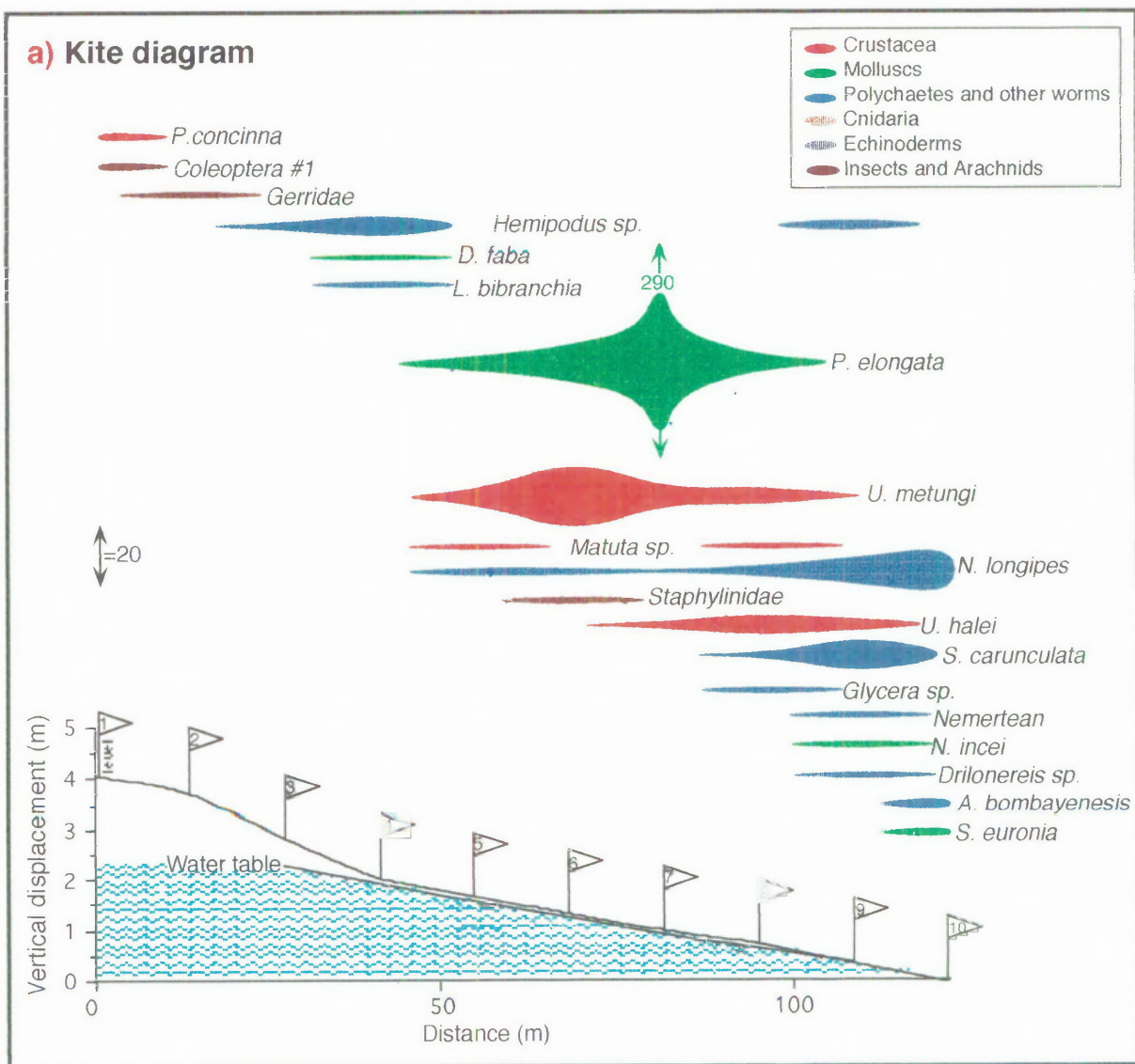


Figure 12.24:

Lammermoor beach macrofaunal distribution (Tropical)

[At low tide: 19th December, 1994]



(continued next page.....)

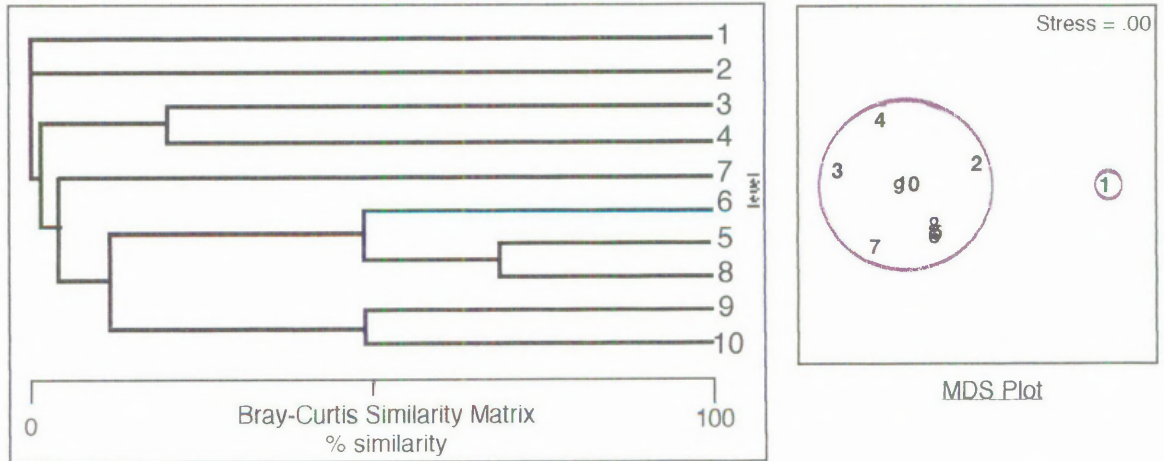
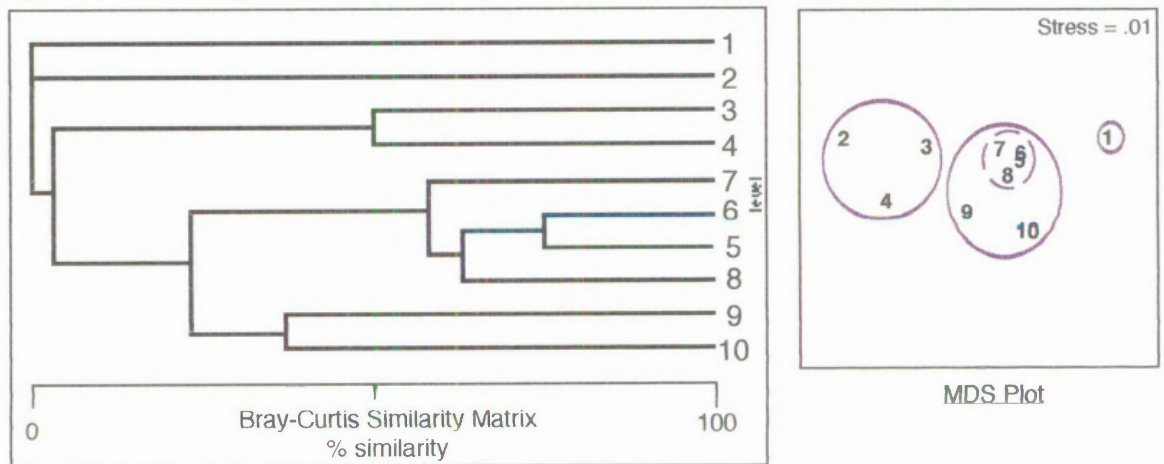
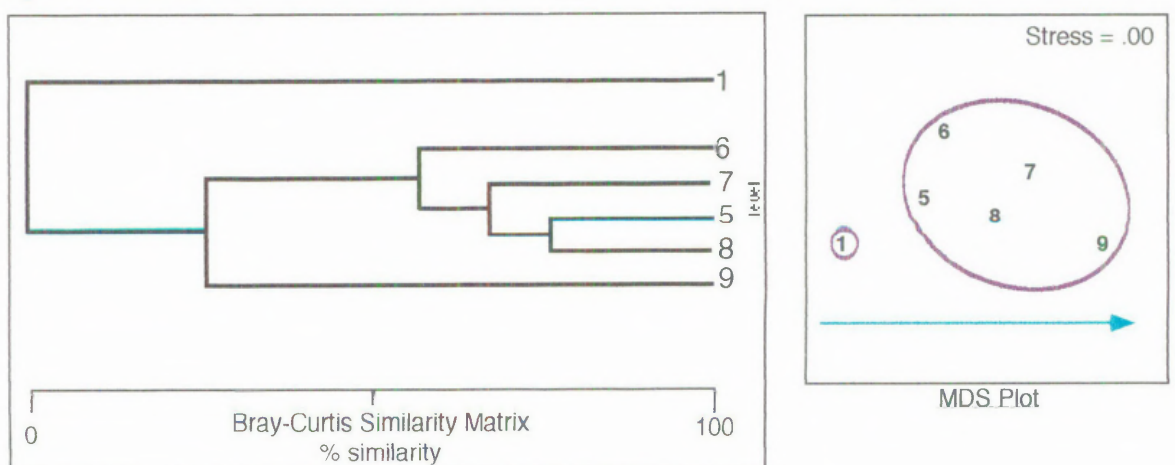
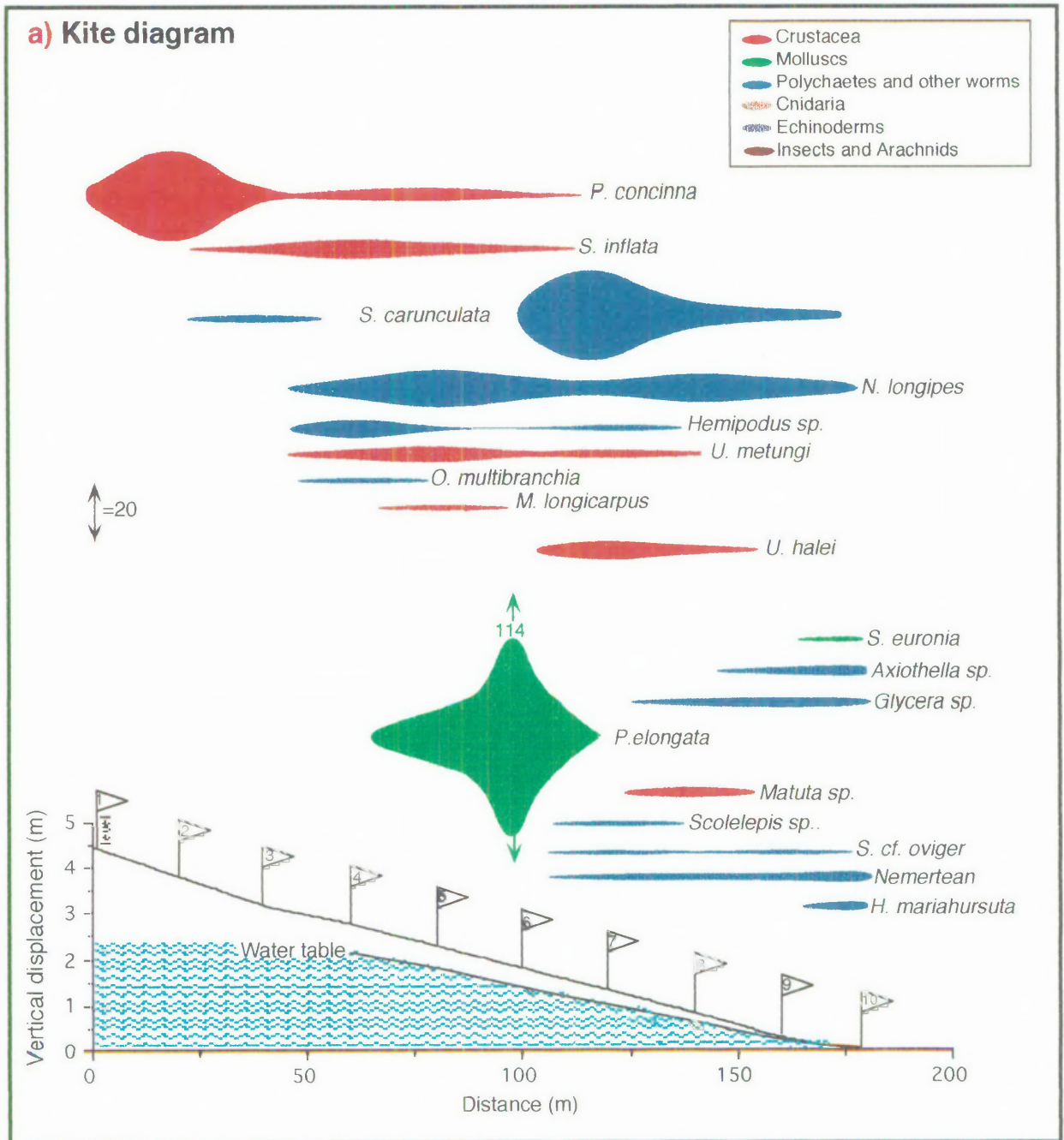
Figure 12.24 (continued)..**Lammermoor beach macrofaunal distribution** (Tropical)**b) Community: Untransformed data dendrogram and MDS****c) Community: Presence/absence data dendrogram and MDS****d) Crustacea: Fourth root transformed data dendrogram and MDS**

Figure 12.25:

Farnborough (south) beach macrofaunal distribution (Tropical)

[At low tide: 20th December, 1994]



(continued next page.....)

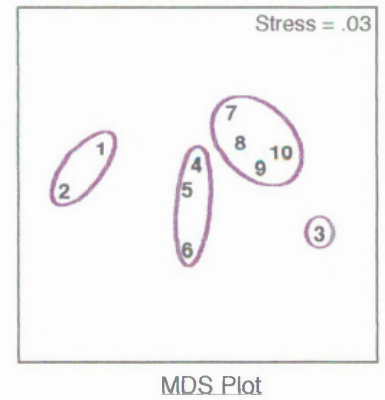
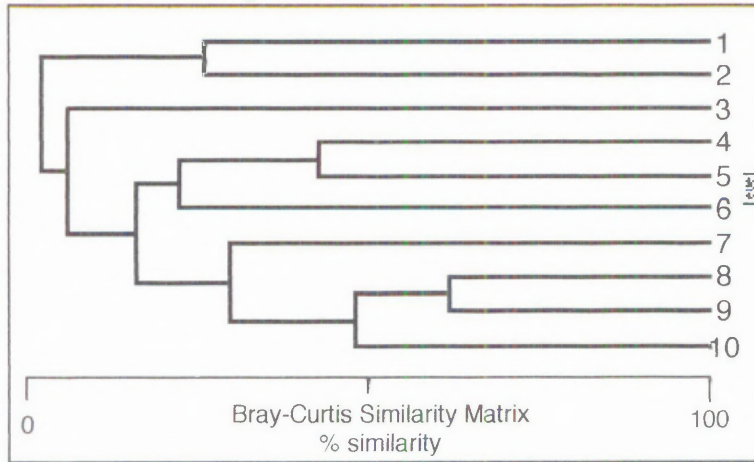
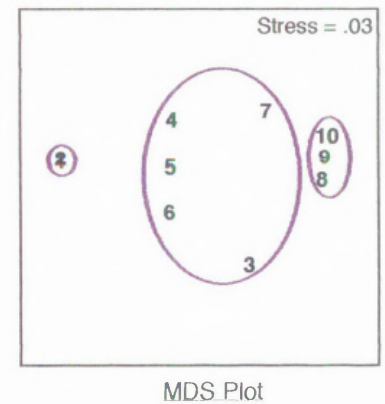
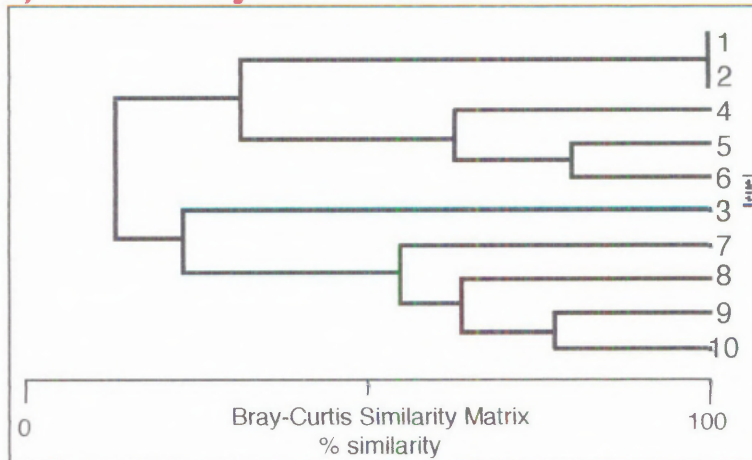
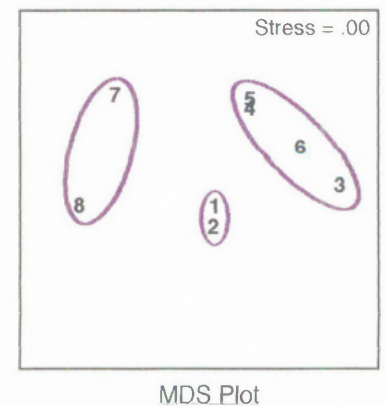
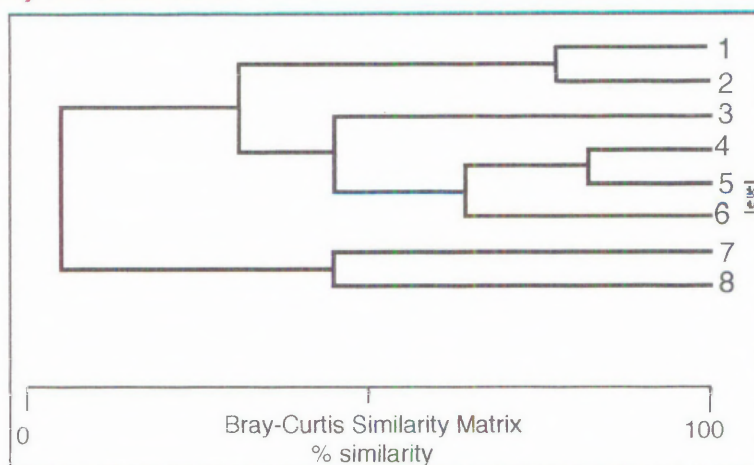
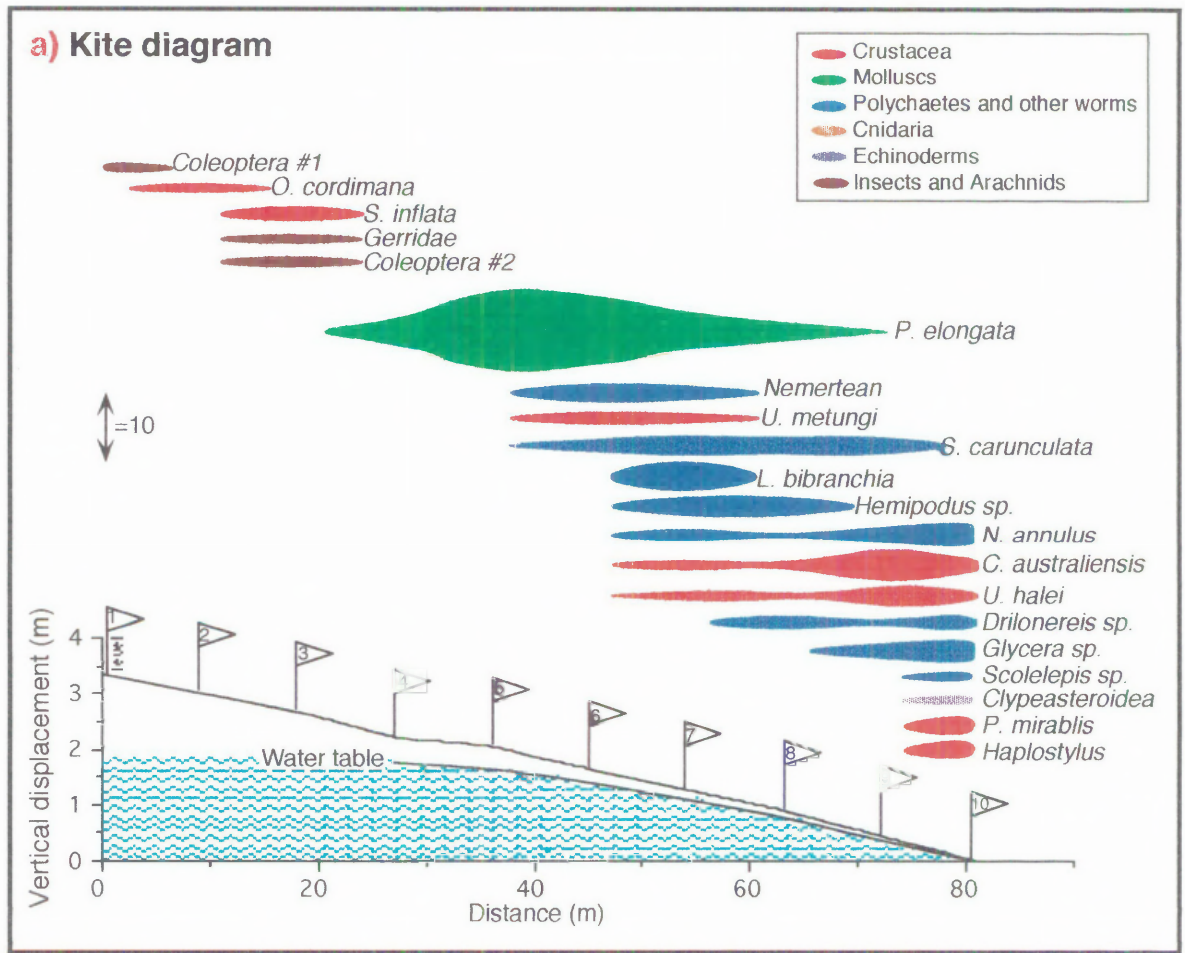
Figure 12.25(continued)..**Farnborough (south) beach macrofaunal distribution (Tropical)****b) Community: Untransformed data dendrogram and MDS****c) Community: Presence/absence data dendrogram and MDS****d) Crustacea: Fourth root transformed data dendrogram and MDS**

Figure 12.26:

Blacks beach macrofaunal distribution (Tropical)

[At low tide: 11th December, 1994]

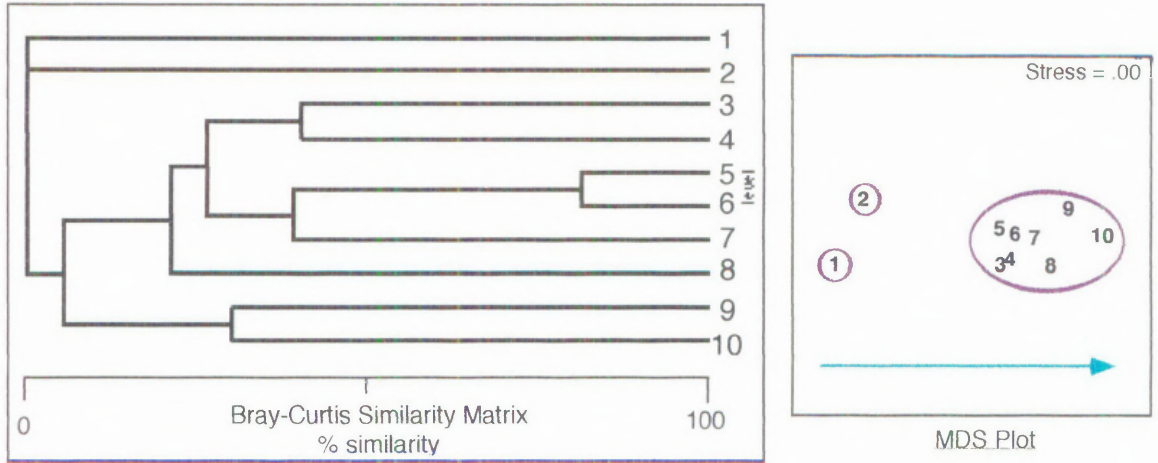


(continued next page.....)

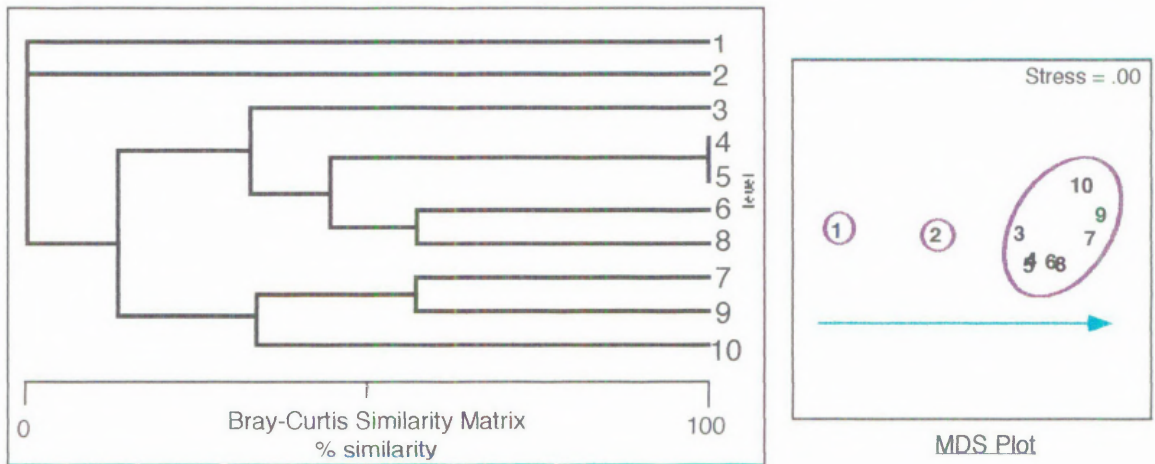
Figure 12.26 (continued)..

Blacks beach macrofaunal distribution (Tropical)

b) Community: Untransformed data dendrogram and MDS



c) Community: Presence/absence data dendrogram and MDS



d) Crustacea: Fourth root transformed data dendrogram and MDS

