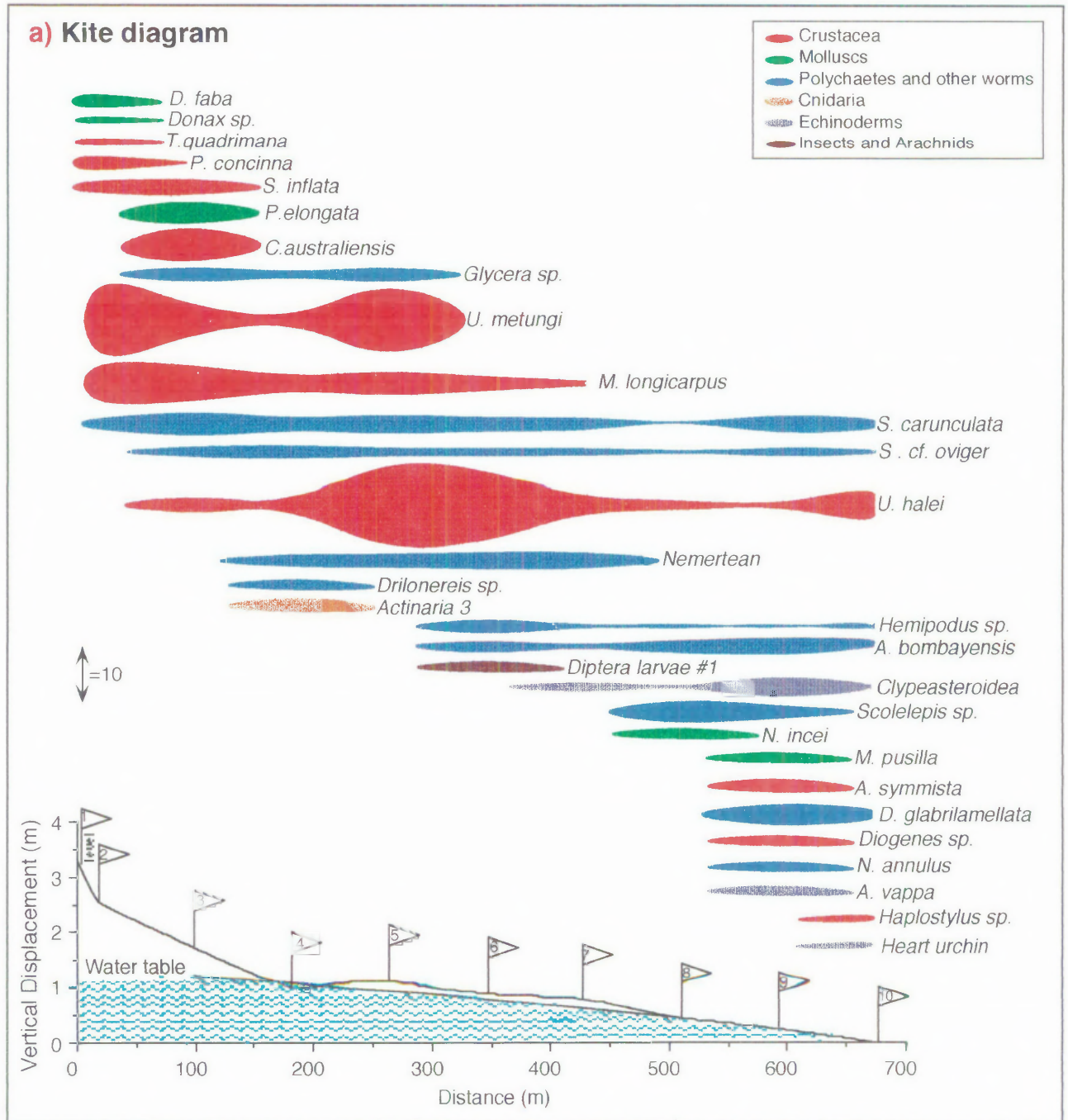


Figure 12.34:

Shoal Point beach macrofaunal distribution (Tropical)

[At low tide: 12th December, 1994]



(Continued next page...)

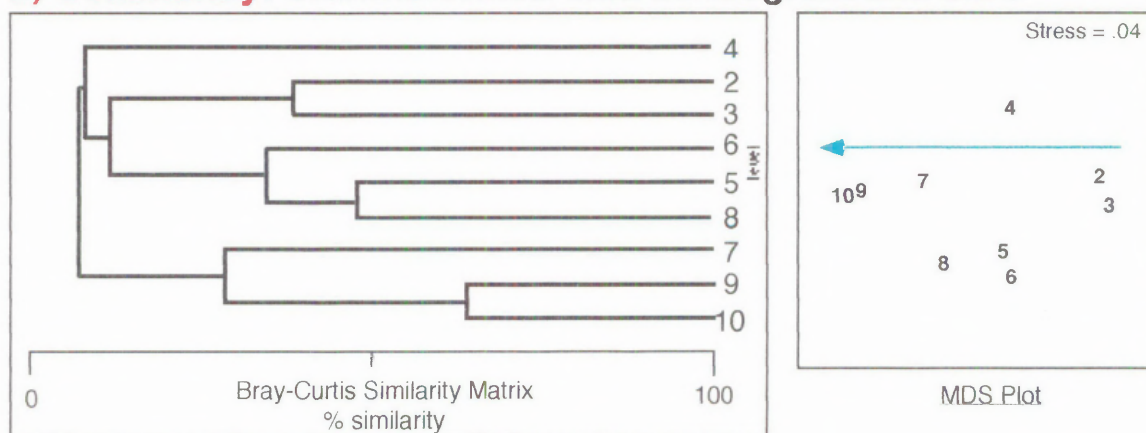
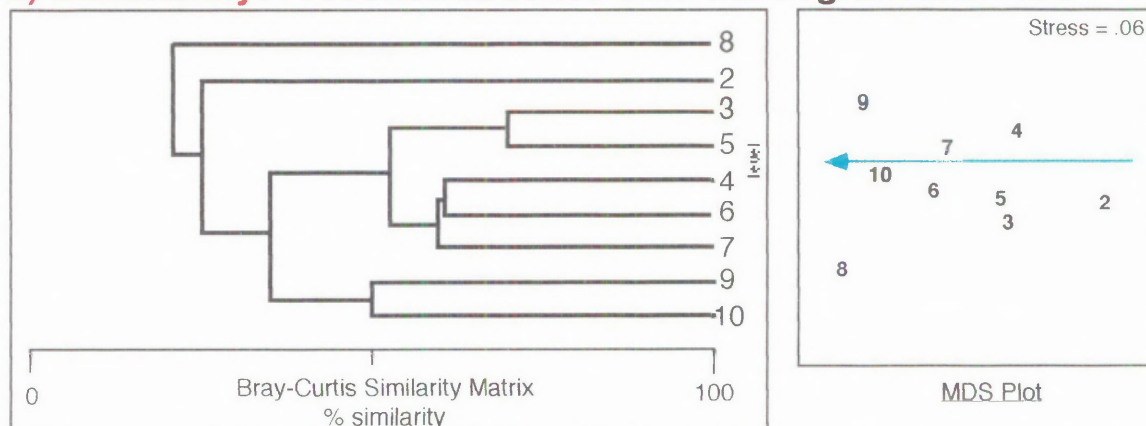
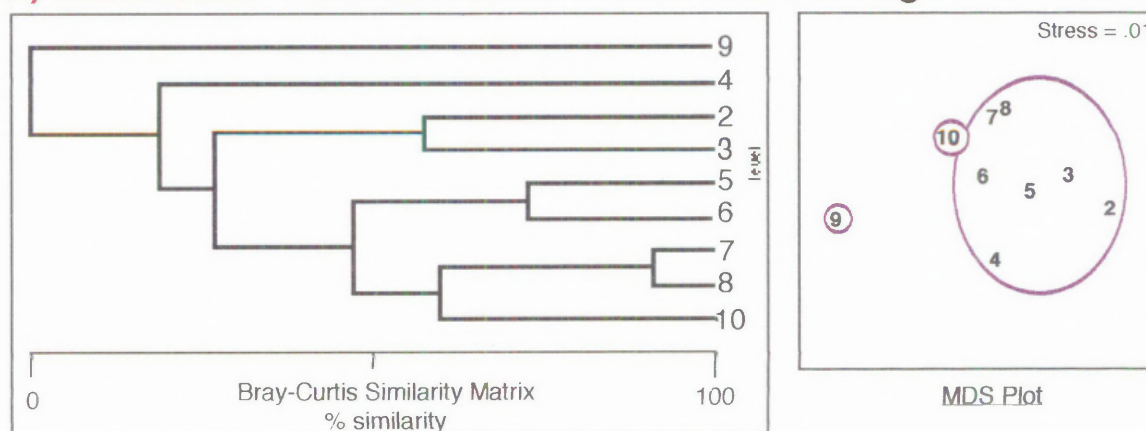
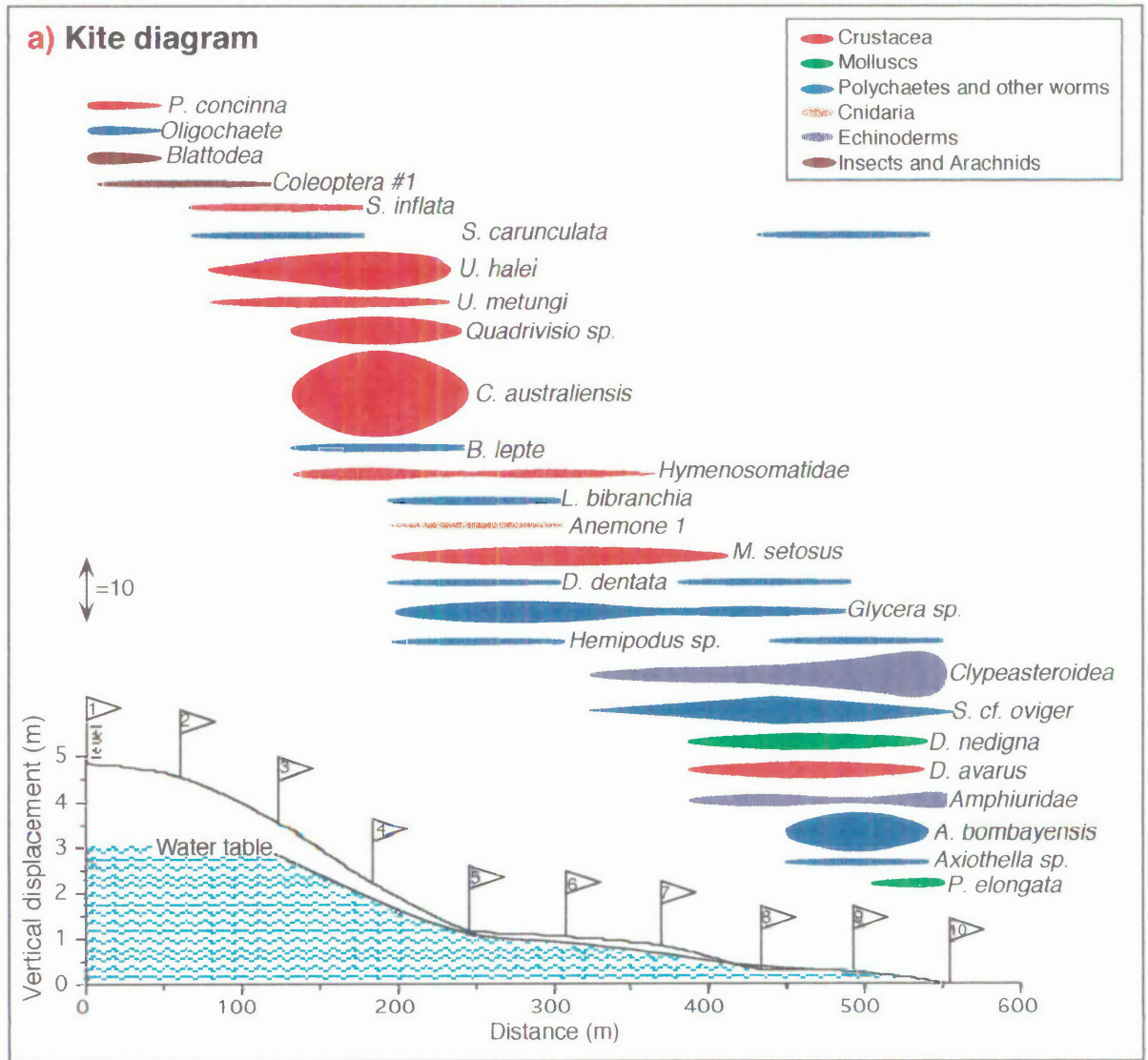
Figure 12.34 (continued)..**Shoal Point beach macrofaunal distribution (Tropical)****b) Community: Untransformed data dendrogram and MDS****c) Community: Presence/absence data dendrogram and MDS****d) Crustacea: Fourth root transformed data dendrogram and MDS**

Figure 12.35:
Armstrongs beach macrofaunal distribution (Tropical)

[At low tide: 18th December, 1994]



(Continued next page...)

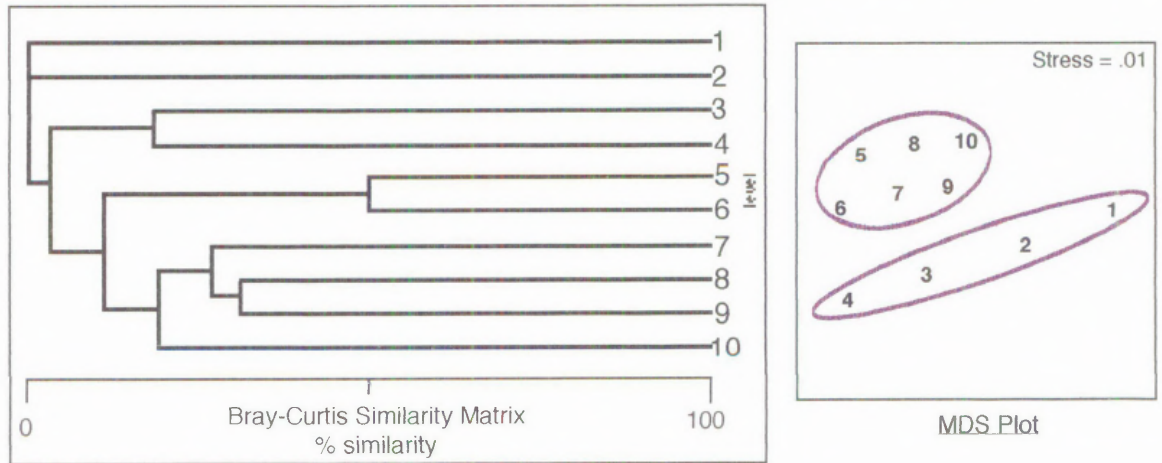
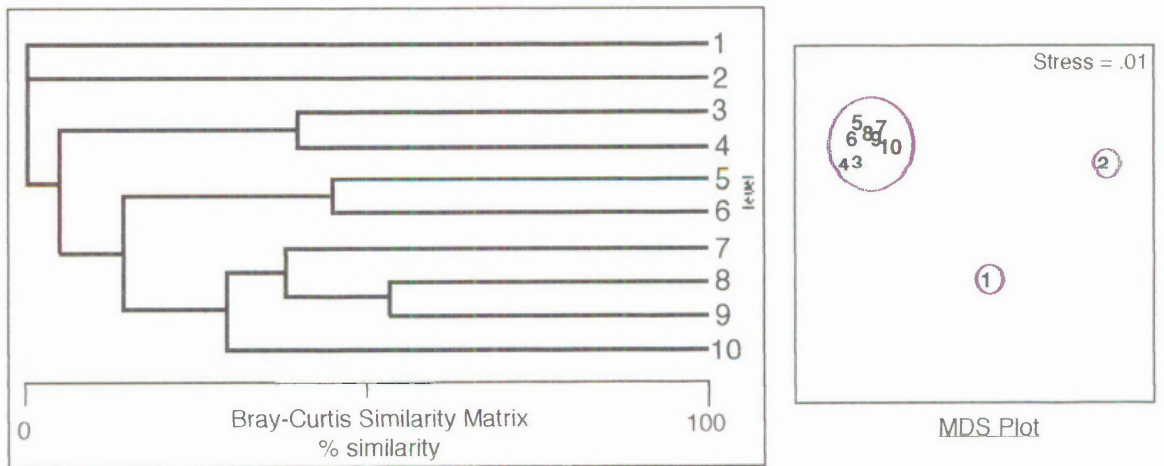
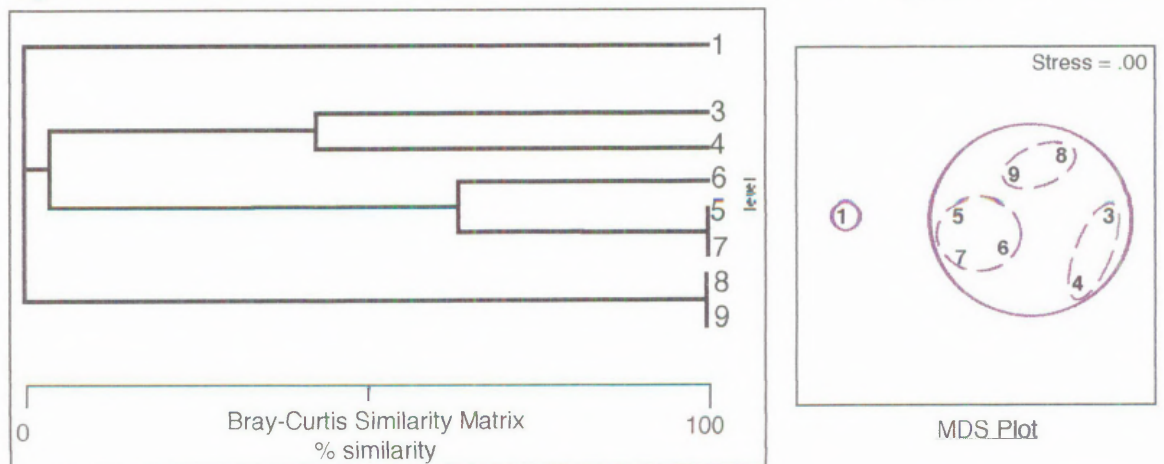
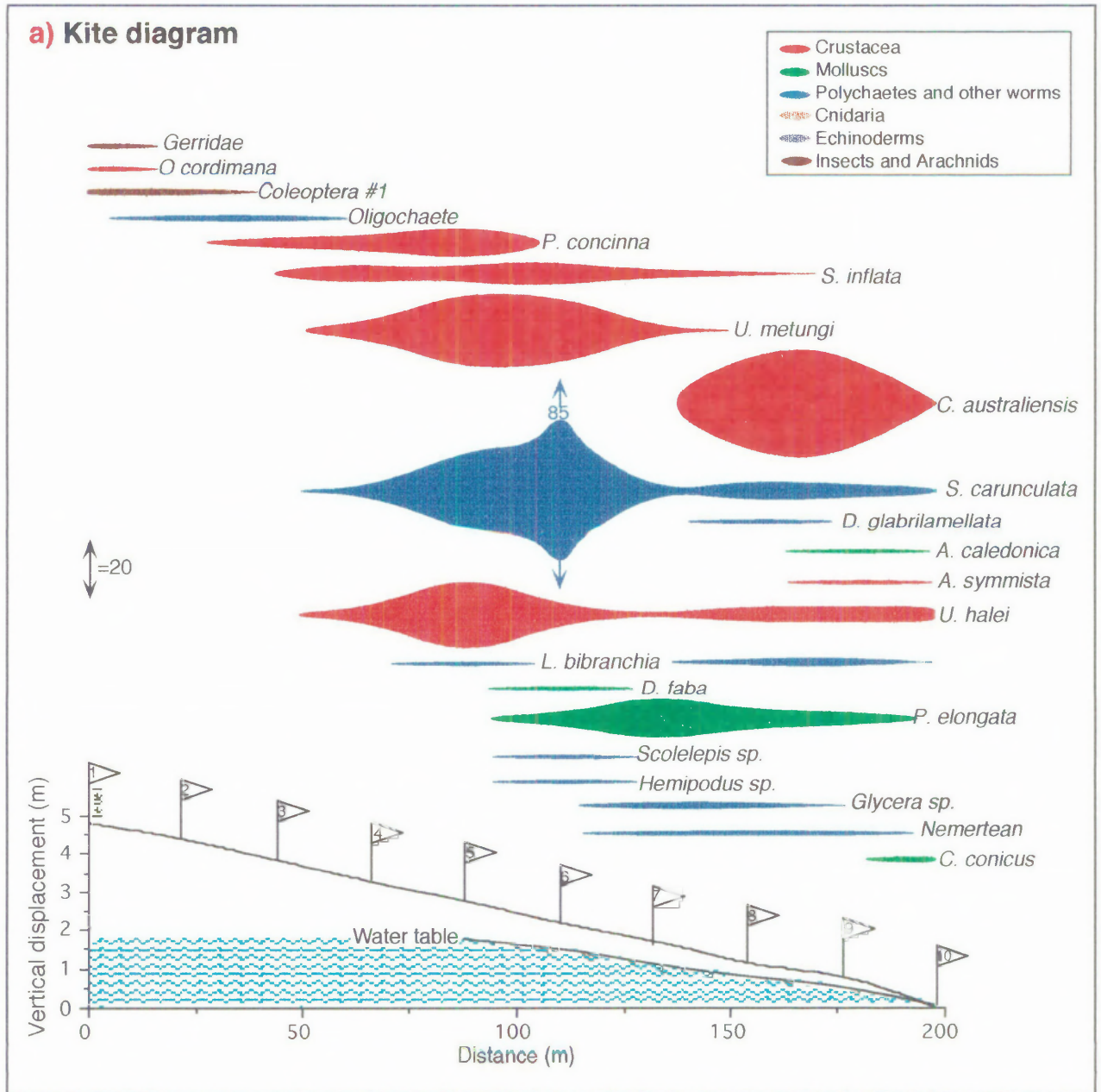
Figure 12.35 (continued)..**Armstrongs beach macrofaunal distribution (Tropical)****b) Community: Untransformed data dendrogram and MDS****c) Community: Presence/absence data dendrogram and MDS****d) Crustacea: Fourth root transformed data dendrogram and MDS**

Figure 12.36:

Bucasia beach macrofaunal distribution (Tropical)

[At low tide: 10th December 1994]



(Continued next page...)

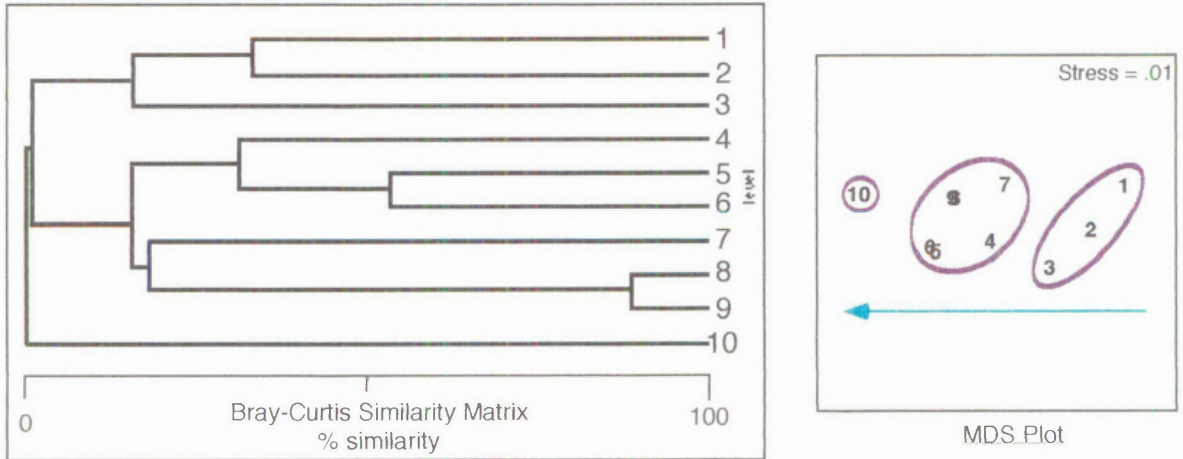
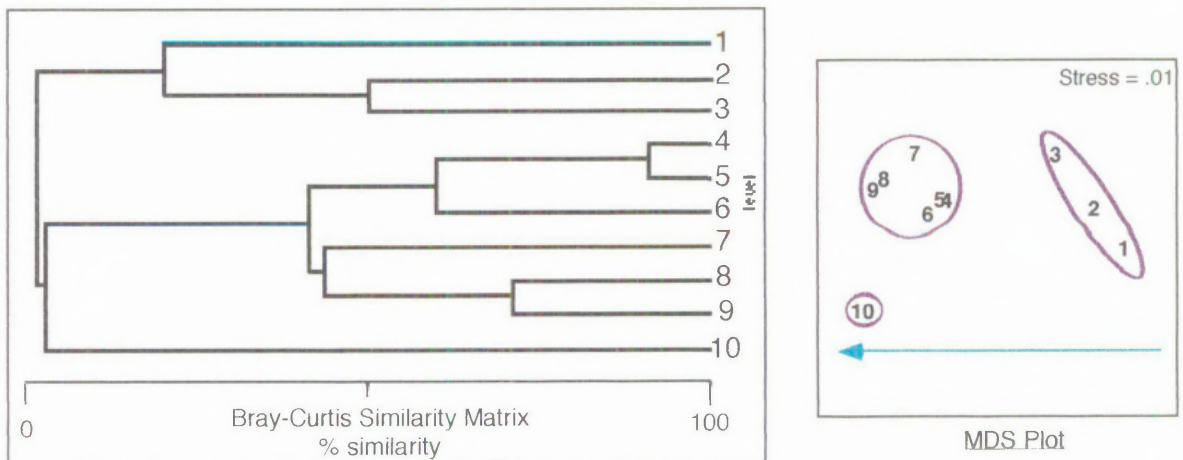
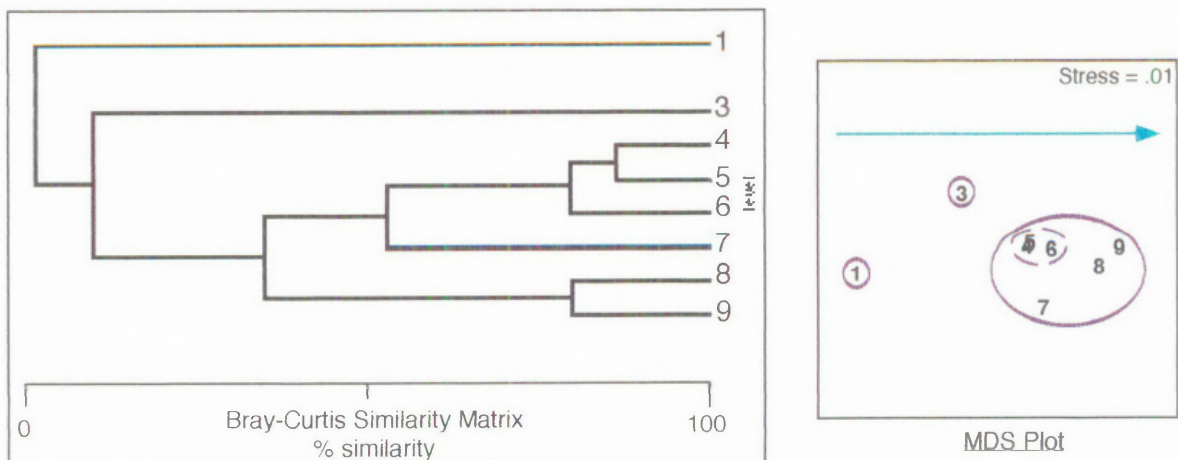
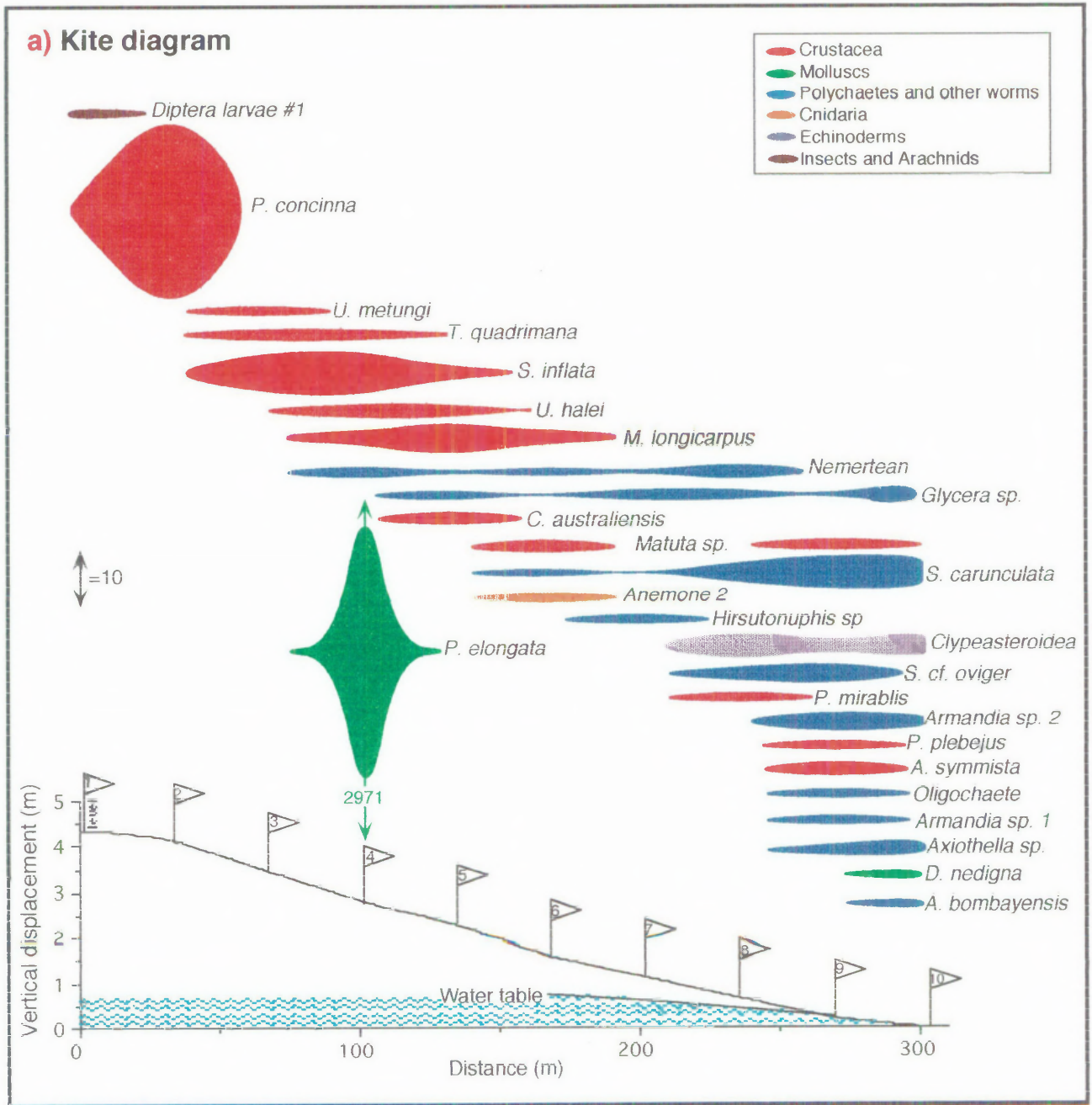
Figure 12.36 (continued)..**Bucasia beach macrofaunal distribution (Tropical)****b) Community: Untransformed data dendrogram and MDS****c) Community: Presence/absence data dendrogram and MDS****d) Crustacea: Fourth root transformed data dendrogram and MDS**

Figure 12.37:

Ball Bay beach macrofaunal distribution (Tropical)

[At low tide: 17th December, 1994]



(Continued next page...)

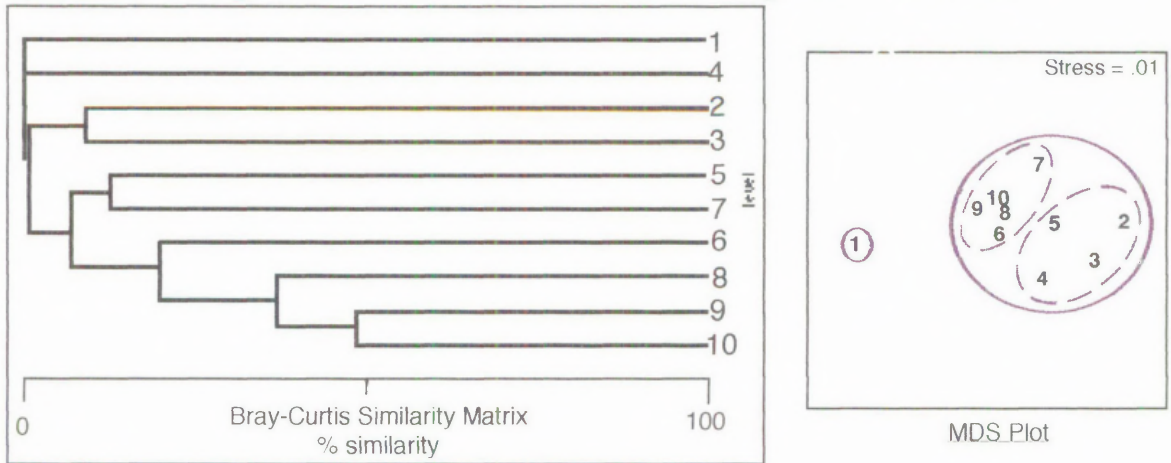
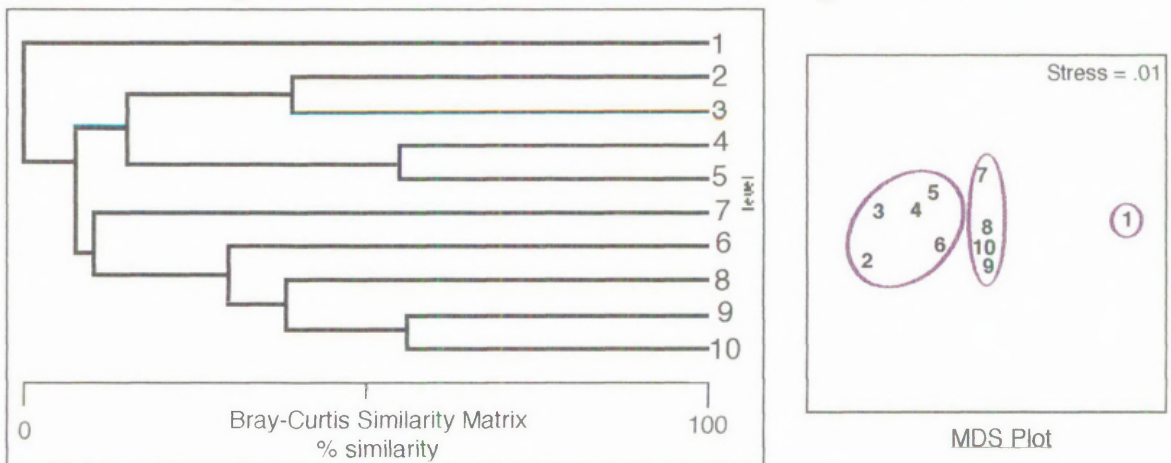
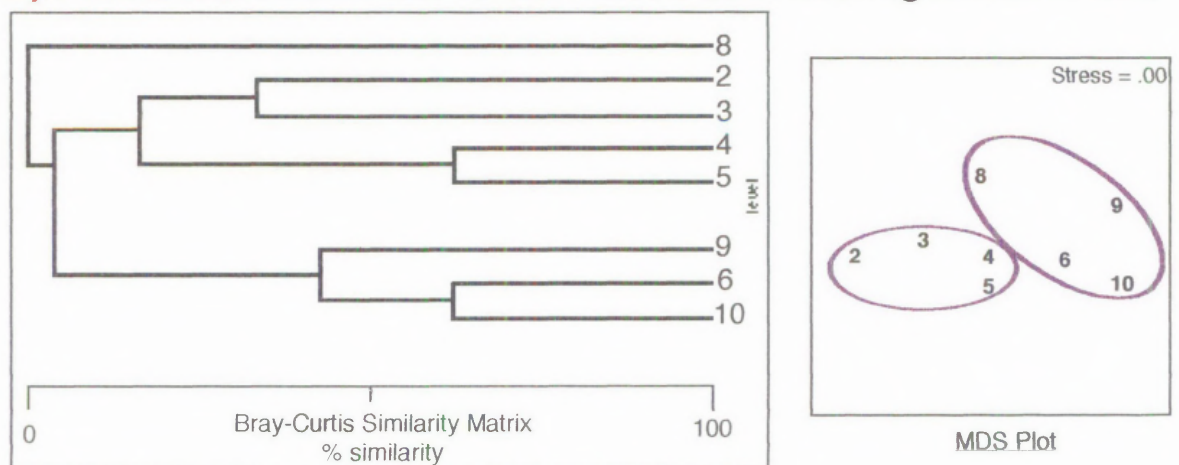
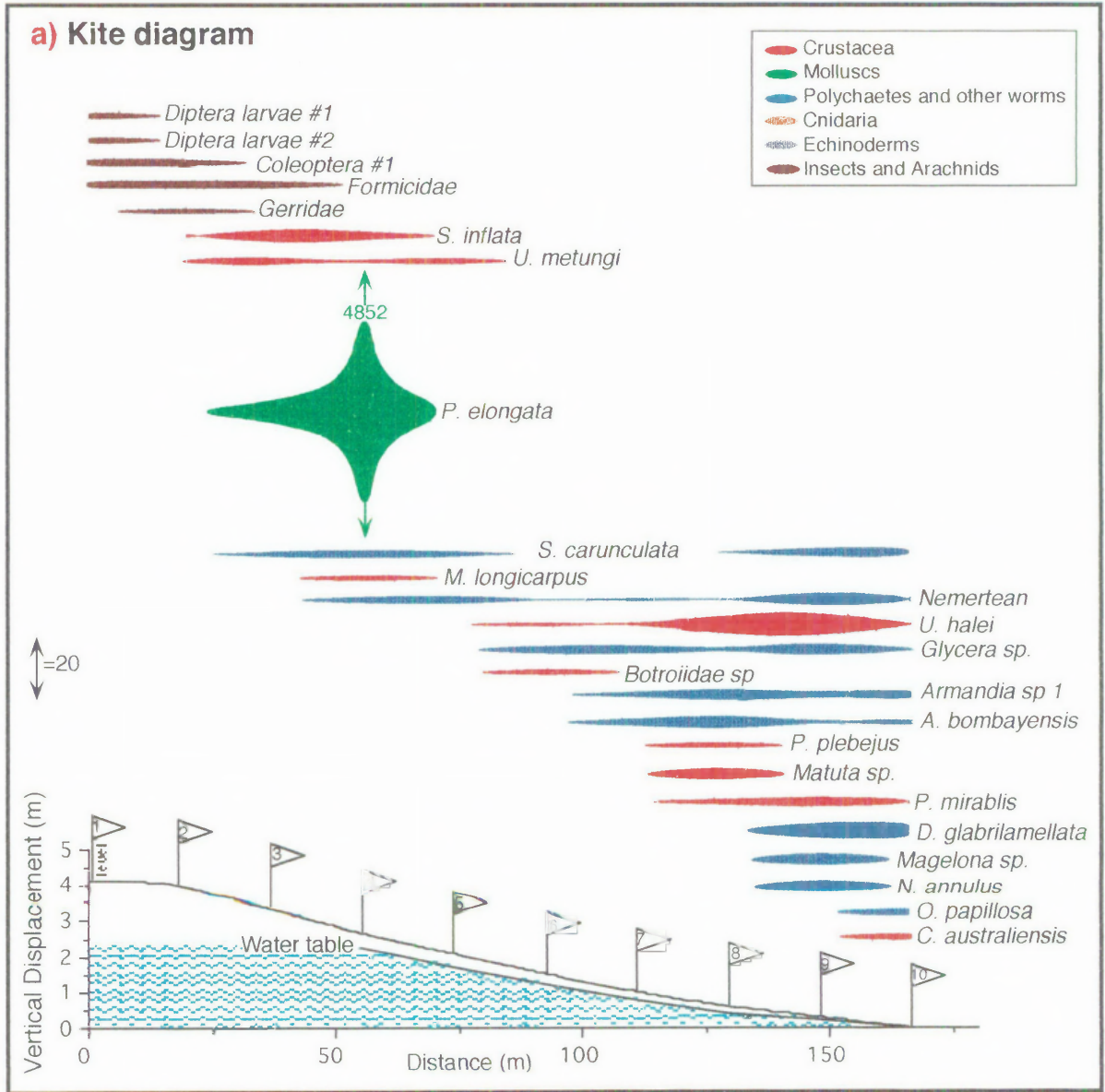
Figure 12.37 (continued)..**Ball Bay beach macrofaunal distribution (Tropical)****b) Community: Untransformed data dendrogram and MDS****c) Community: Presence/absence data dendrogram and MDS****d) Crustacea: Fourth root transformed data dendrogram and MDS**

Figure 12.38:

Casuarina beach macrofaunal distribution (Tropical)

[At low tide: 15th December, 1994]

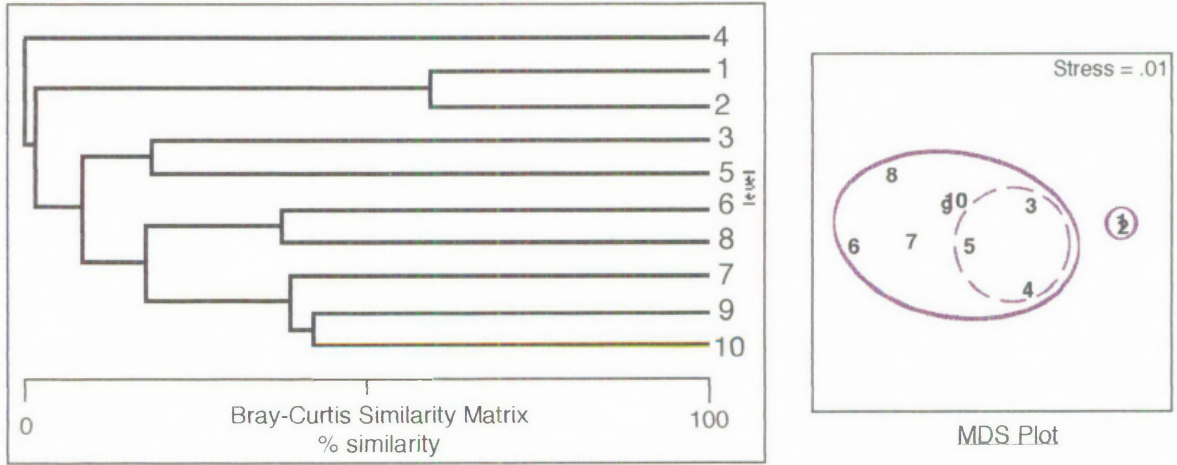


(Continued next page...)

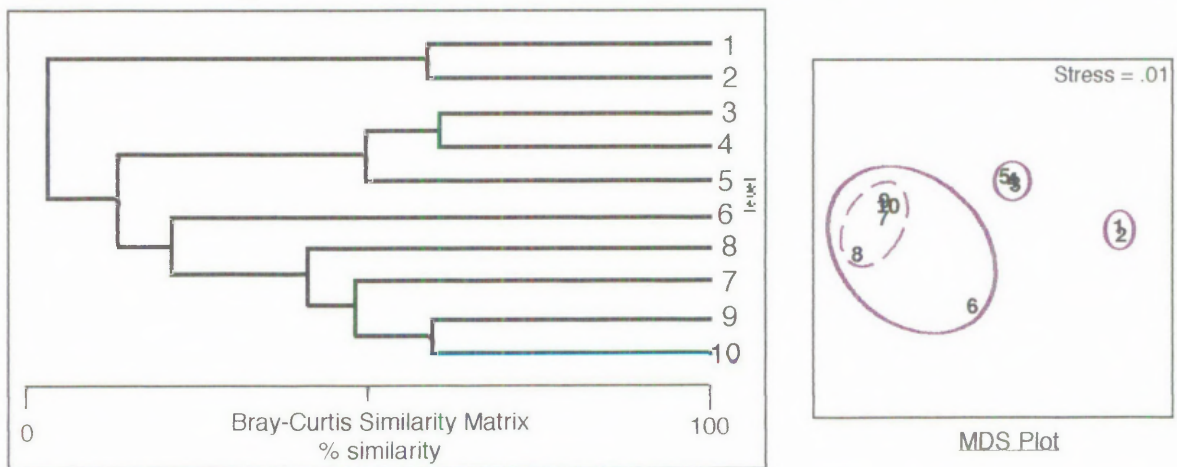
Figure 12.38 (continued)..

Casuarina beach macrofaunal distribution (Tropical)

b) Community: Untransformed data dendrogram and MDS



c) Community: Presence/absence data dendrogram and MDS



c) Crustacea: Fourth root transformed data dendrogram and MDS

