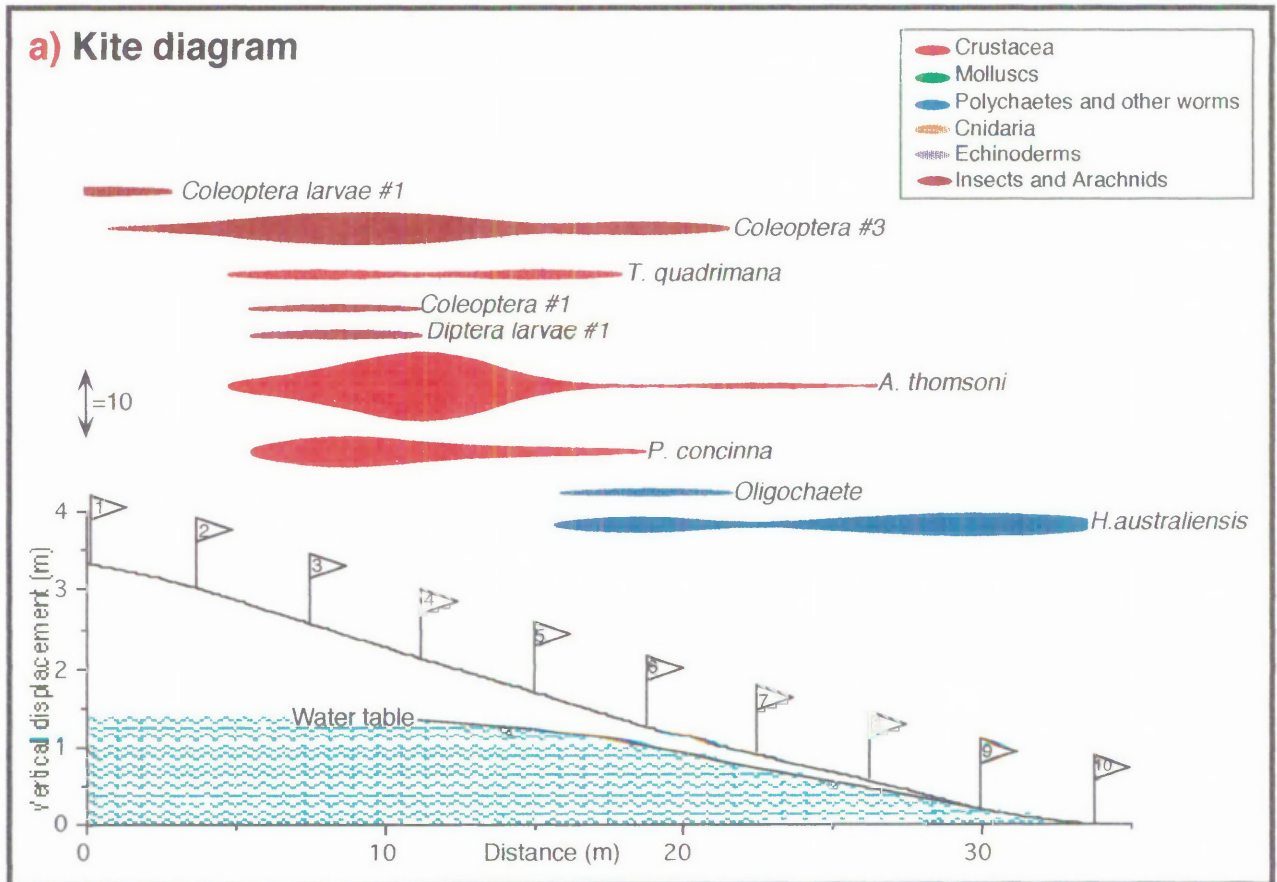
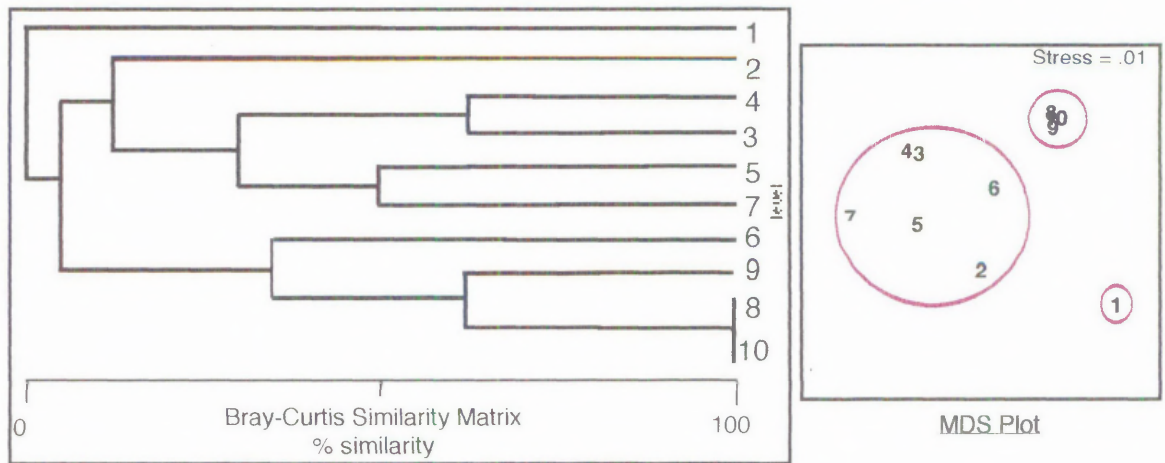
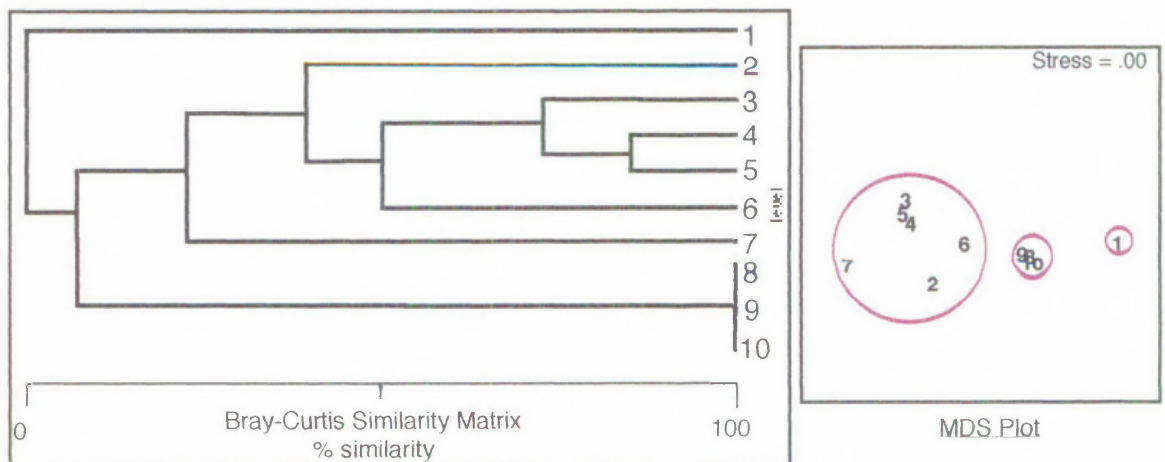
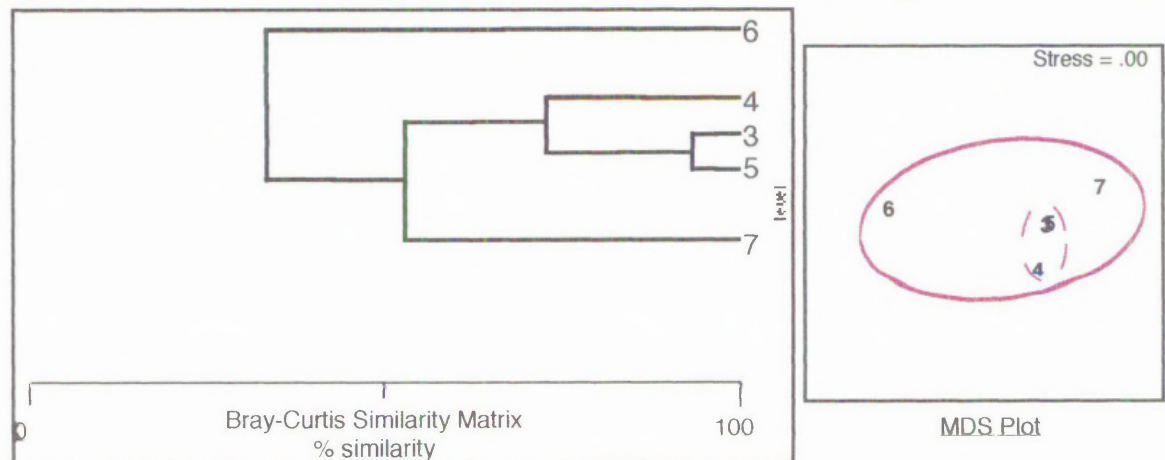


**Figure 12.4:****Bashams beach macrofaunal distribution (Cool Temperate)**

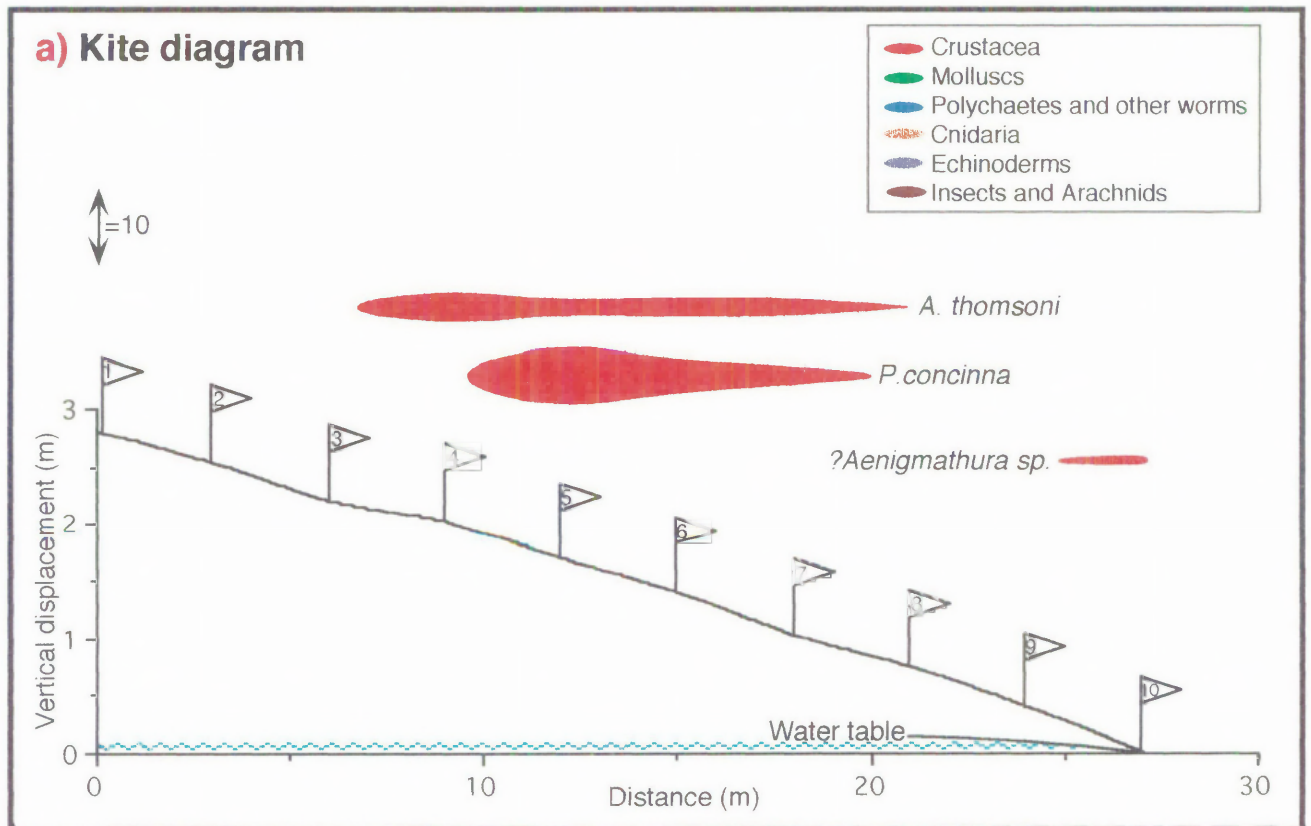
[At low tide: 2nd January, 1995]



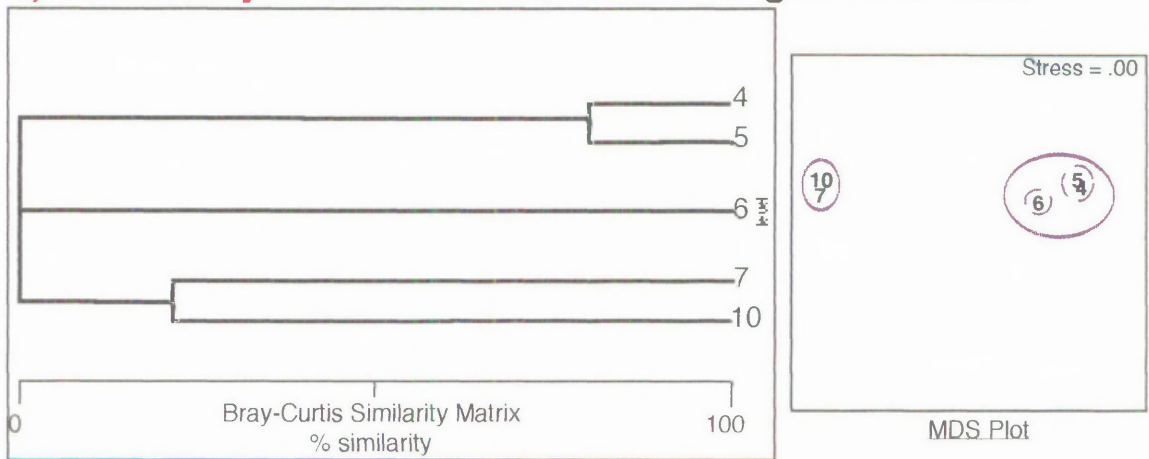
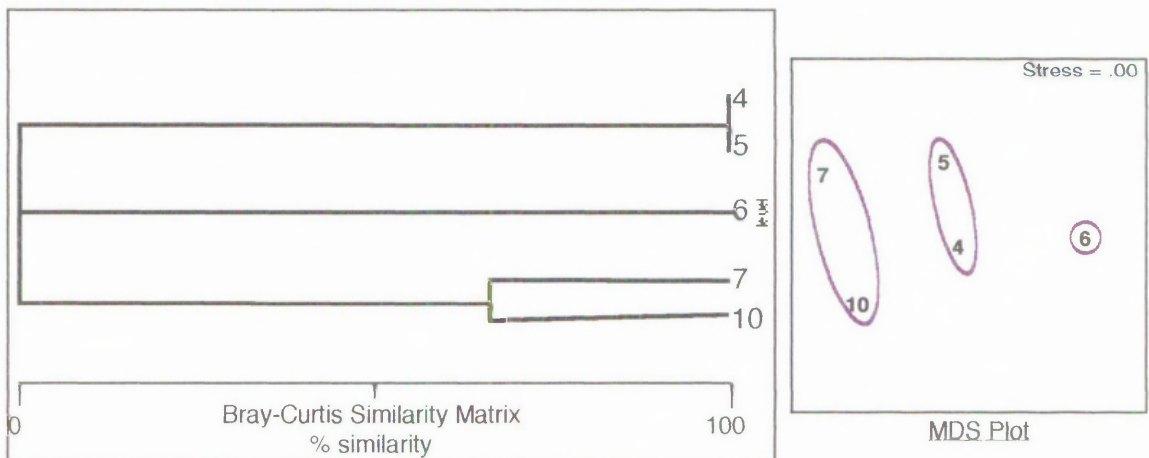
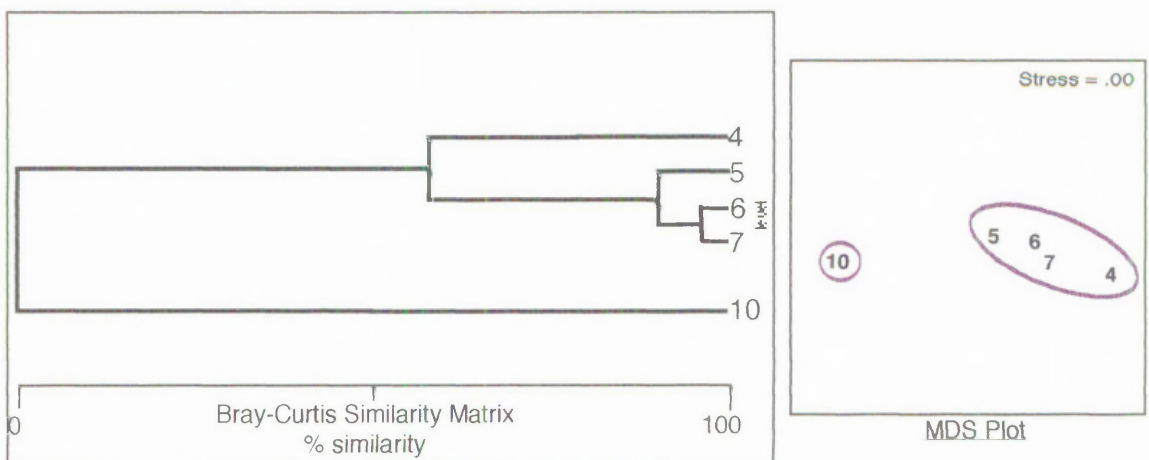
(continued next page.....)

**Figure 12.4:** (continued)..**Bashams beach macrofaunal distribution (Cool Temperate)****b) Community: Untransformed data dendrogram and MDS****c) Community: Presence/absence data dendrogram and MDS****d) Crustacea: Fourth root transformed data dendrogram and MDS**

**Figure 12.5:**  
**Chiton Rocks beach macrofaunal distribution (Cool Temperate)**  
 [At low tide: 31st December, 1994]

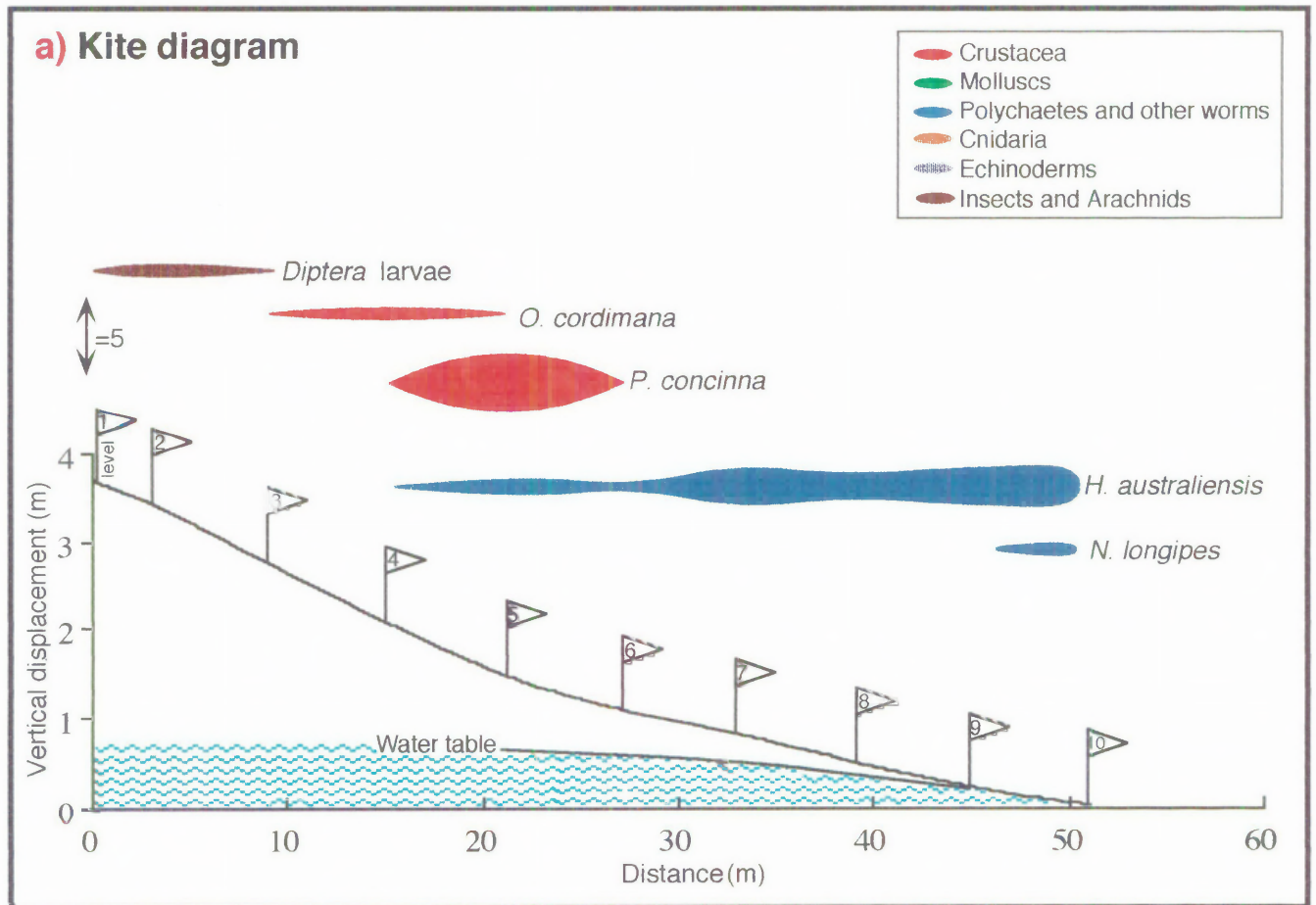


(continued next page.....)

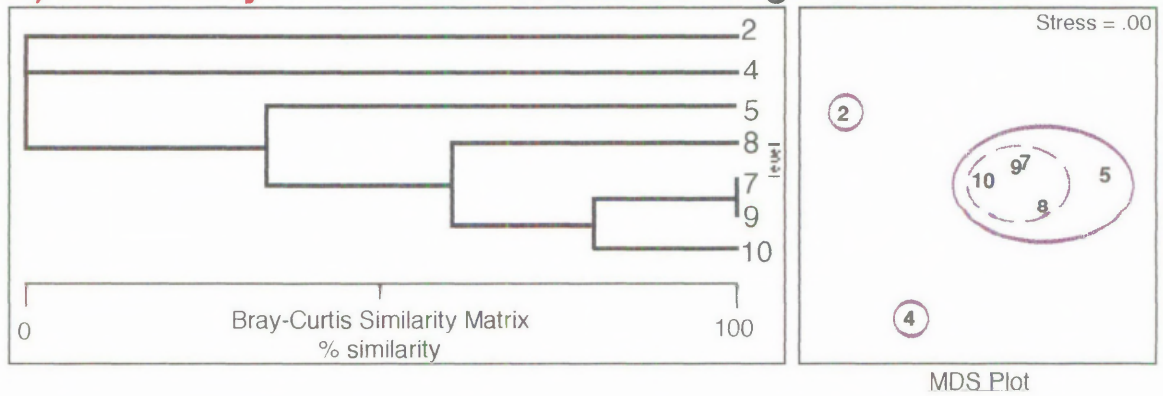
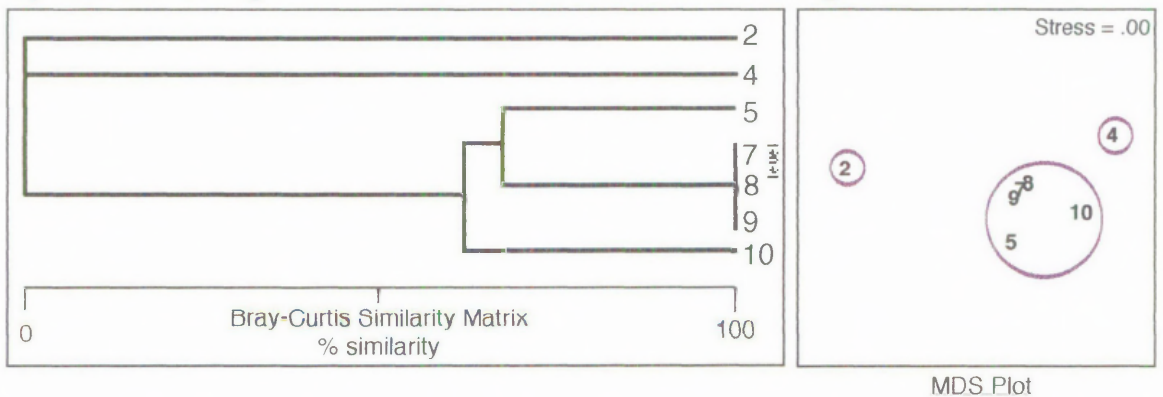
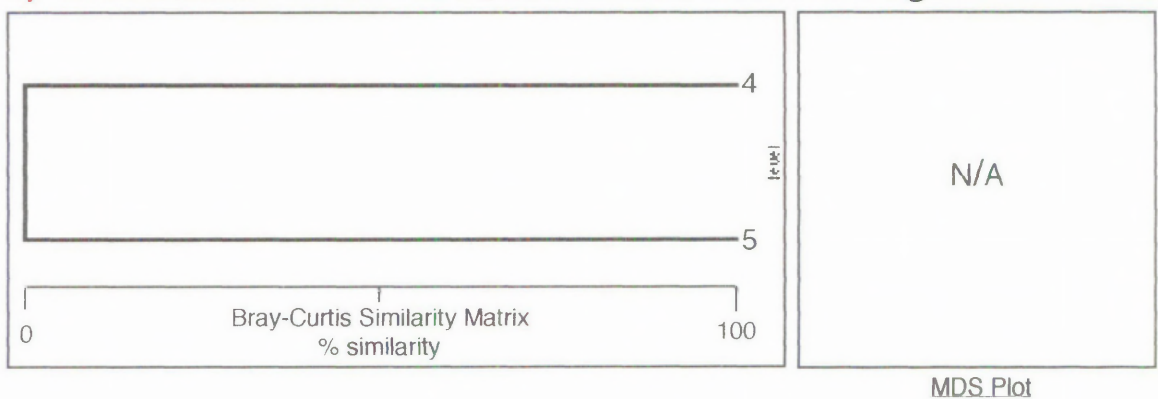
**Figure 12.5** (continued)..**Chiton Rocks beach macrofaunal distribution (Cool Temperate)****b) Community: Untransformed data dendrogram and MDS****c) Community: Presence/absence data dendrogram and MDS****c) Crustacea: Fourth root transformed data dendrogram and MDS**

**Figure 12.6:****Korora beach macrofaunal distribution (Warm Temperate)**

[At low tide: 10th January, 1994]

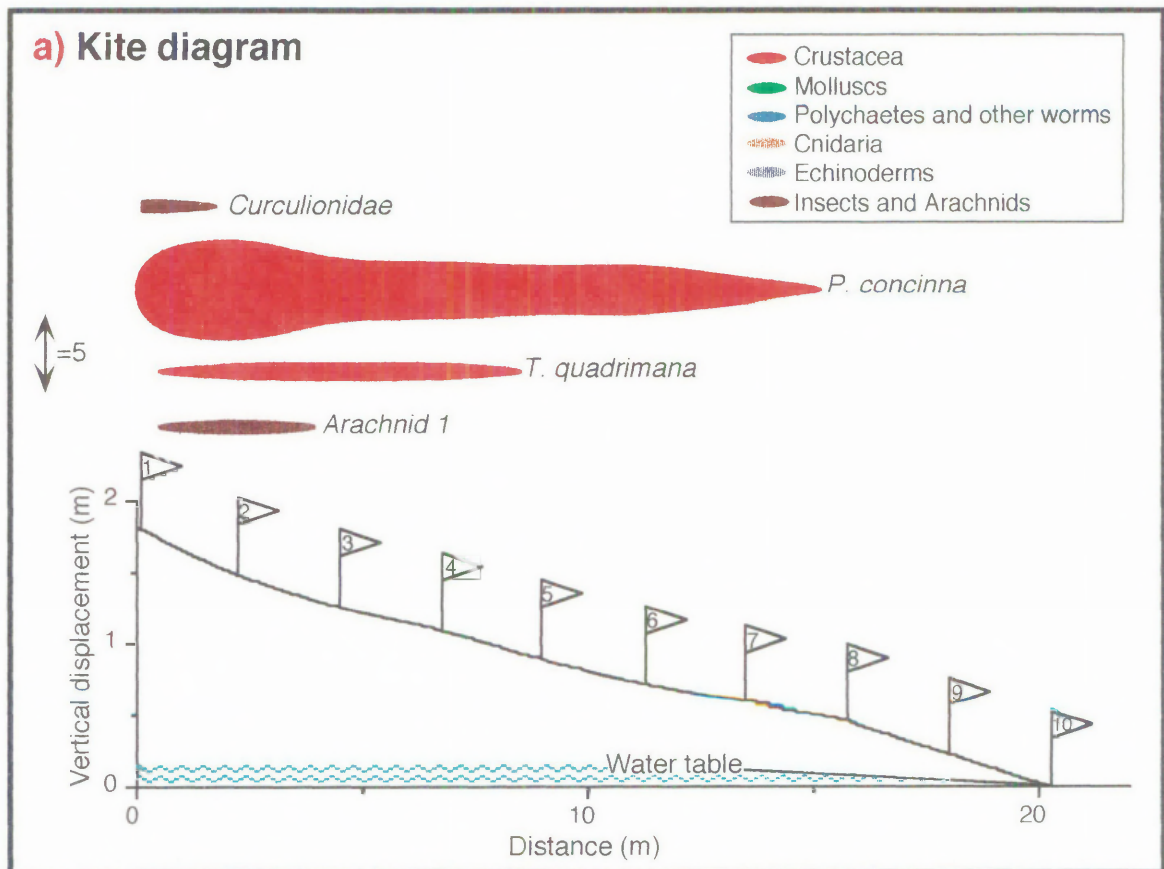


(continued next page.....)

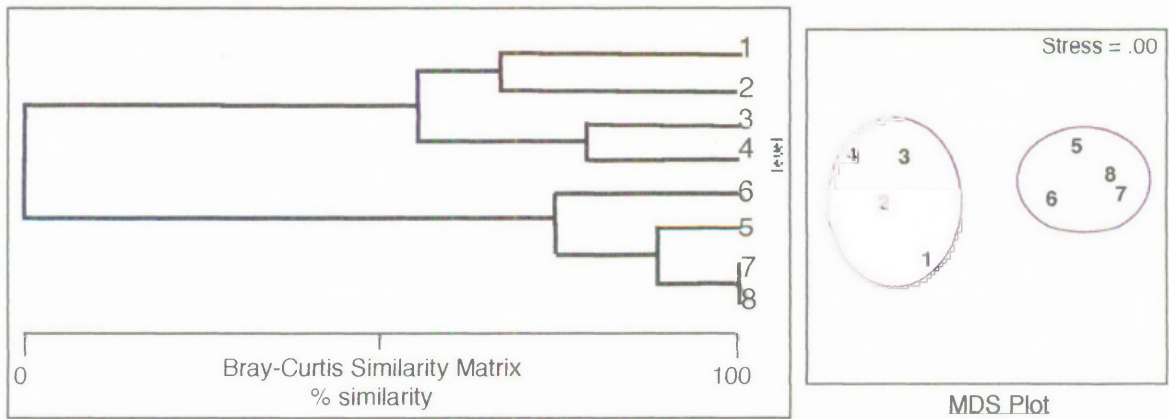
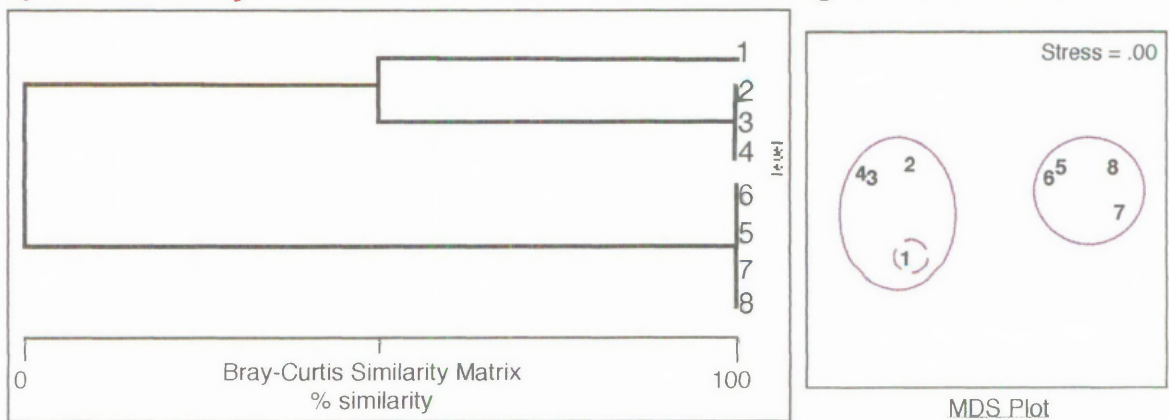
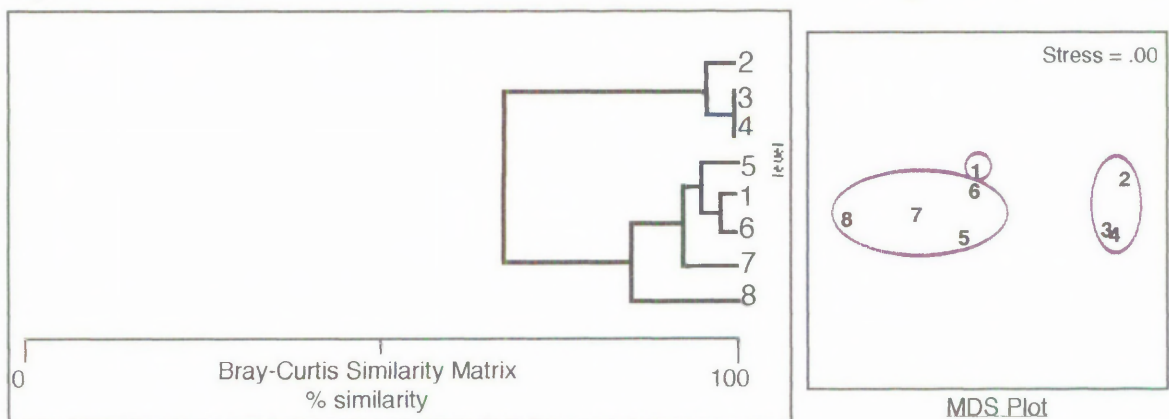
**Figure 12.6** (continued)..**Korora beach macrofaunal distribution (Warm Temperate)****b) Community: Untransformed data dendrogram and MDS****c) Community: Presence/absence data dendrogram and MDS****d) Crustacea: Fourth root transformed data dendrogram and MDS**

**Figure 12.7:****Evans Cave beach macrofaunal distribution (Cool Temperate)**

[At low tide: 4th January, 1995]



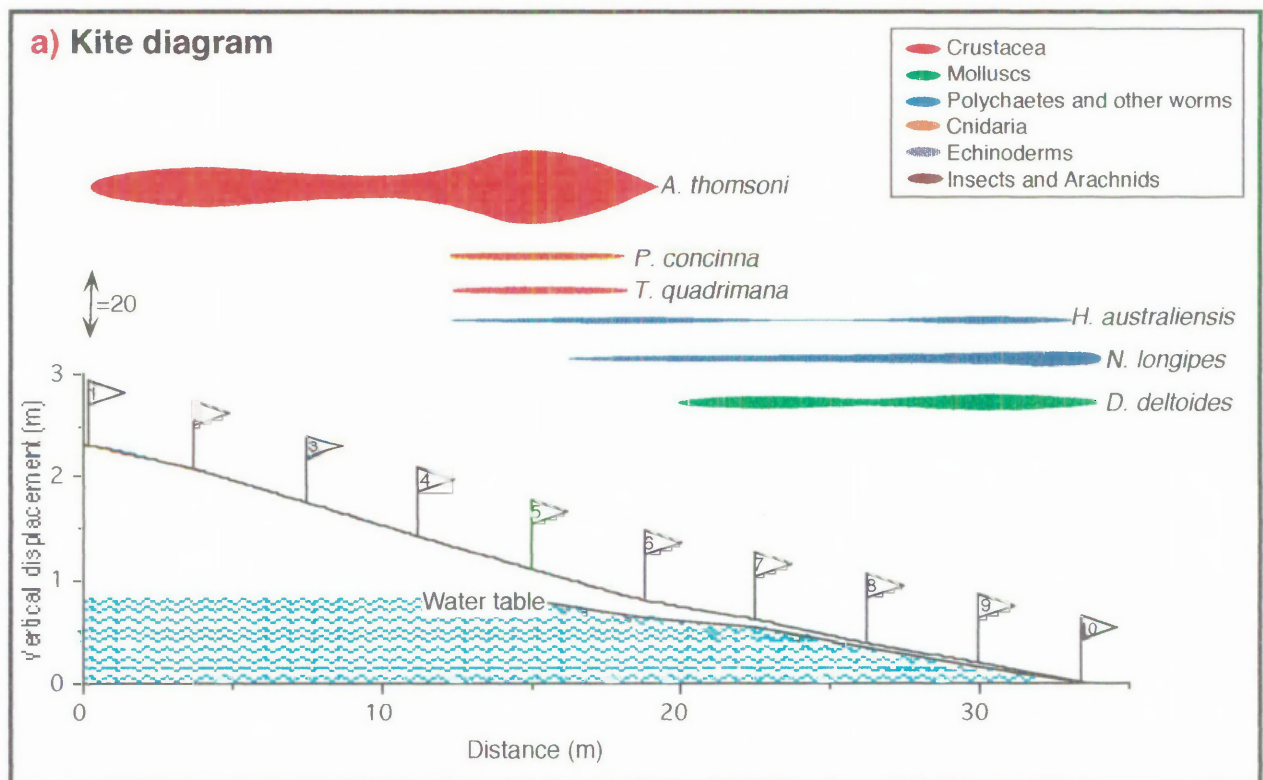
(continued next page.....)

**Figure 12.7** (continued)..**Evans Cave beach macrofaunal distribution (Cool Temperate)****b) Community: Untransformed data dendrogram and MDS****c) Community: Presence/absence data dendrogram and MDS****d) Crustacea: Fourth root transformed data dendrogram and MDS**

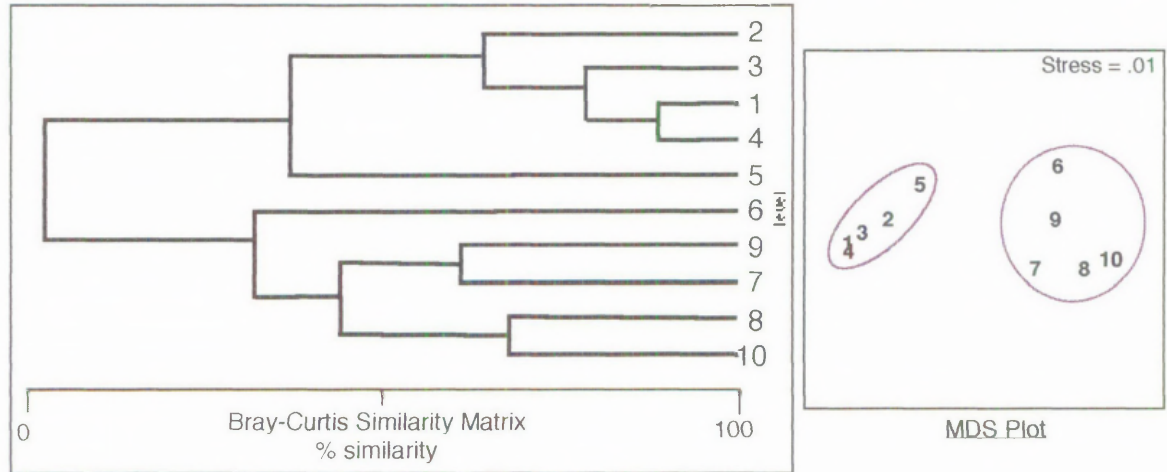
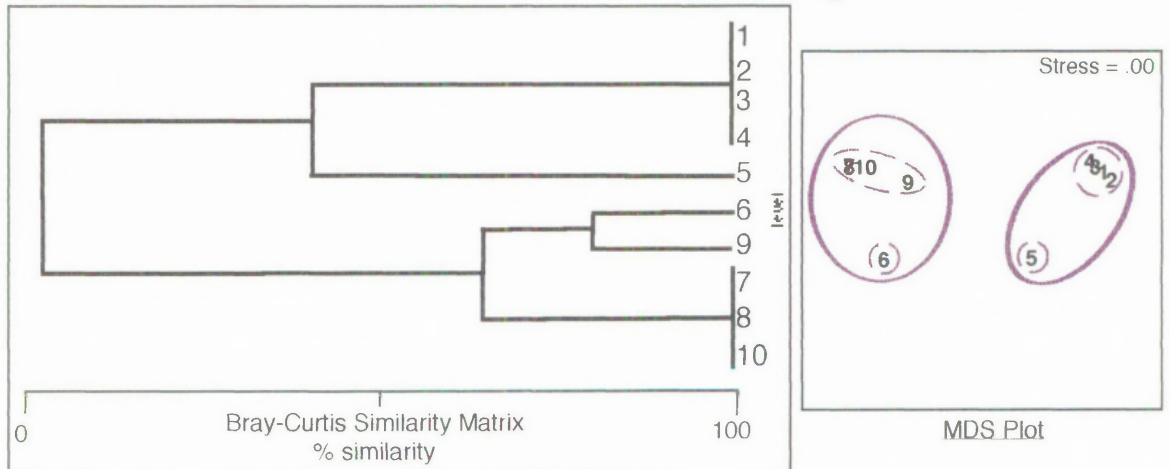
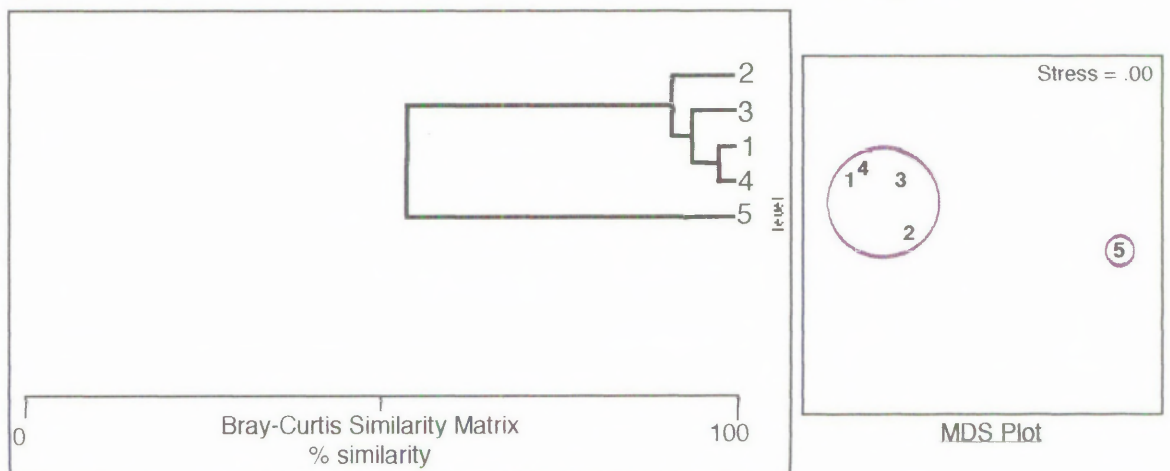


**Figure 12.8:****Goolwa (west) beach macrofaunal distribution (Cool Temperate)**

[At low tide: 30th December, 1994]

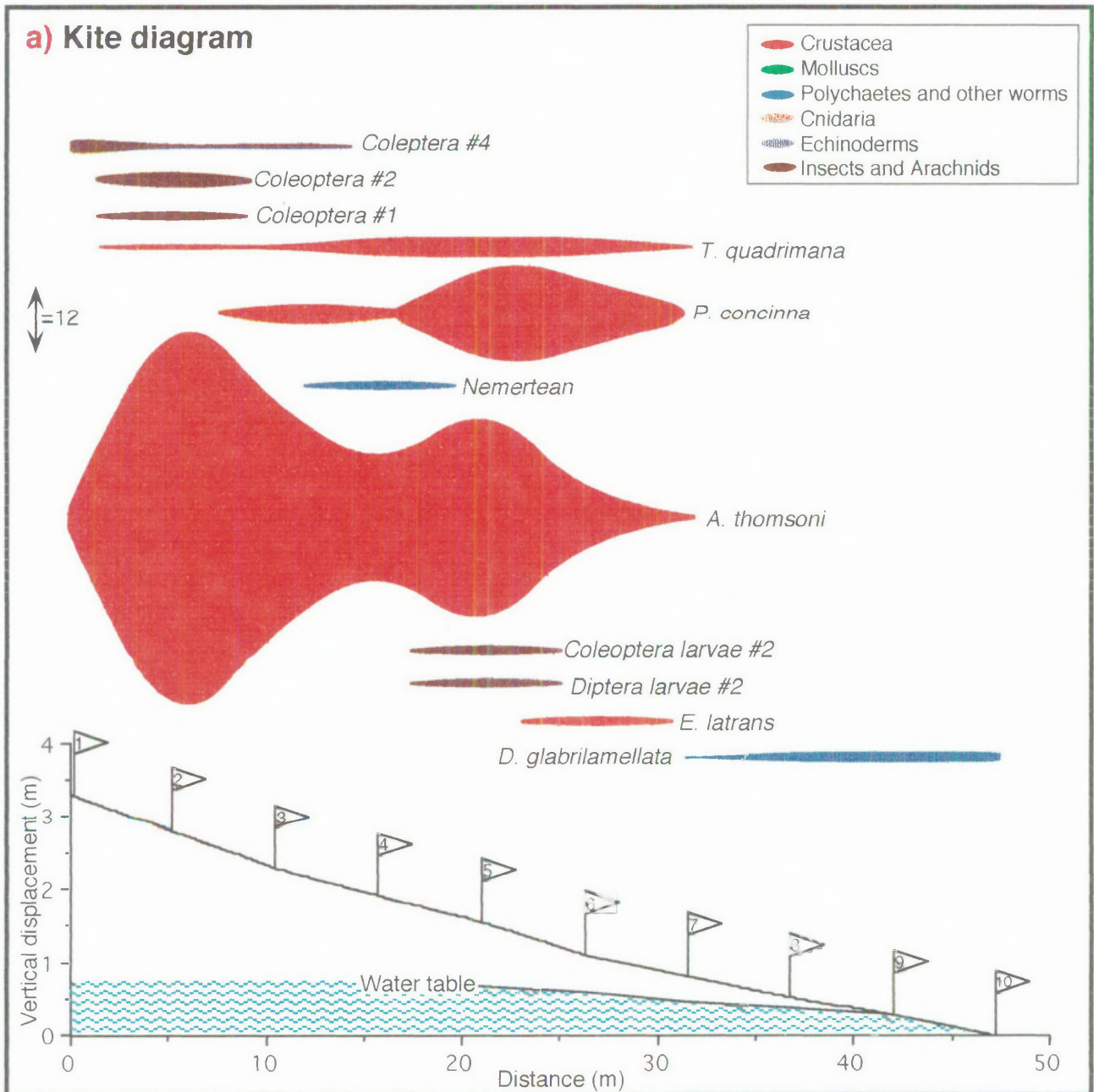


(continued next page.....)

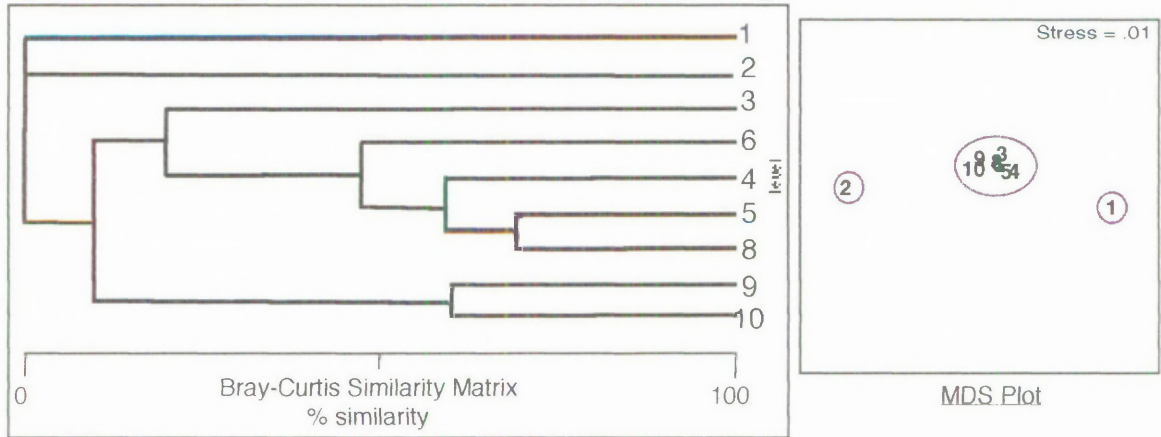
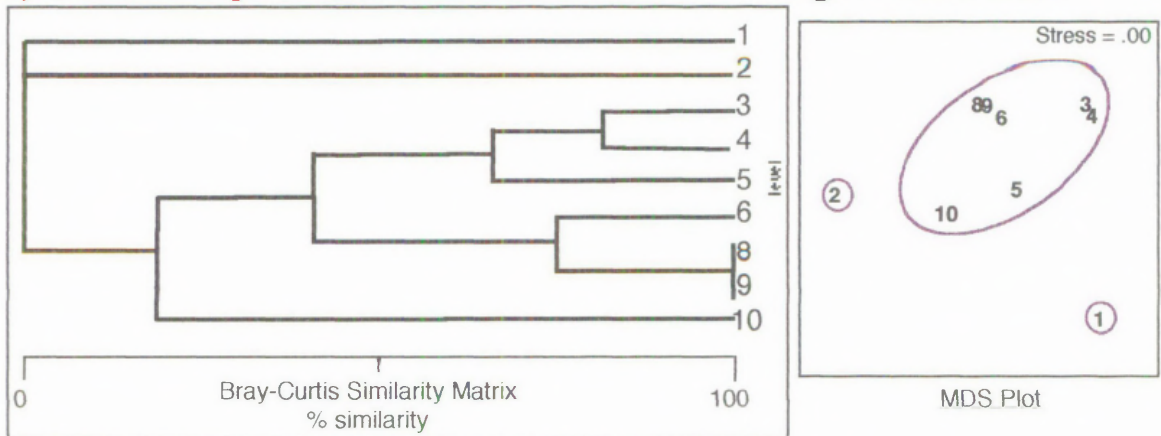
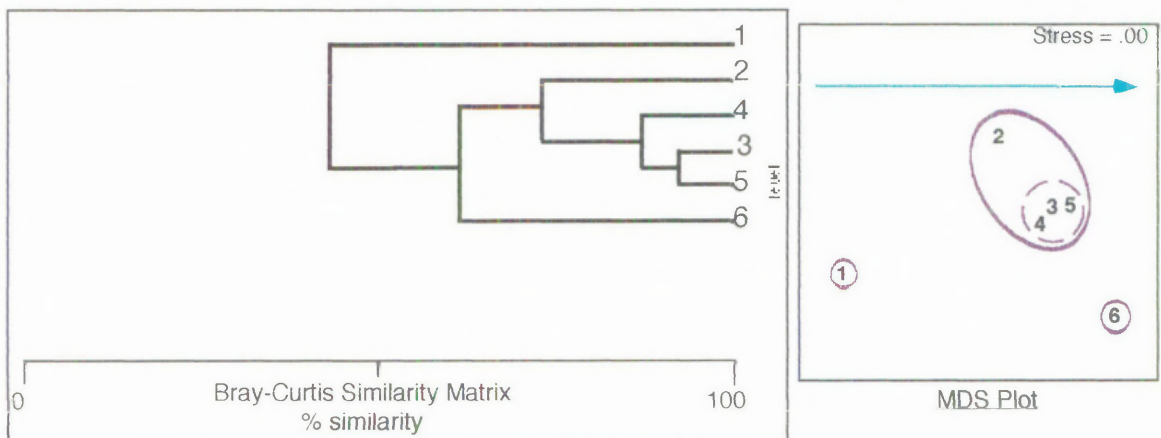
**Figure 12.8** (continued)..**Goolwa (west) beach macrofaunal distribution (Cool Temperate)****b) Community: Untransformed data dendrogram and MDS****c) Community: Presence/absence data dendrogram and MDS****d) Crustacea: Fourth root transformed data dendrogram and MDS**

**Figure 12.9:****Waitpinga beach macrofaunal distribution (Cool Temperate)**

[At low tide: 31st December, 1994]



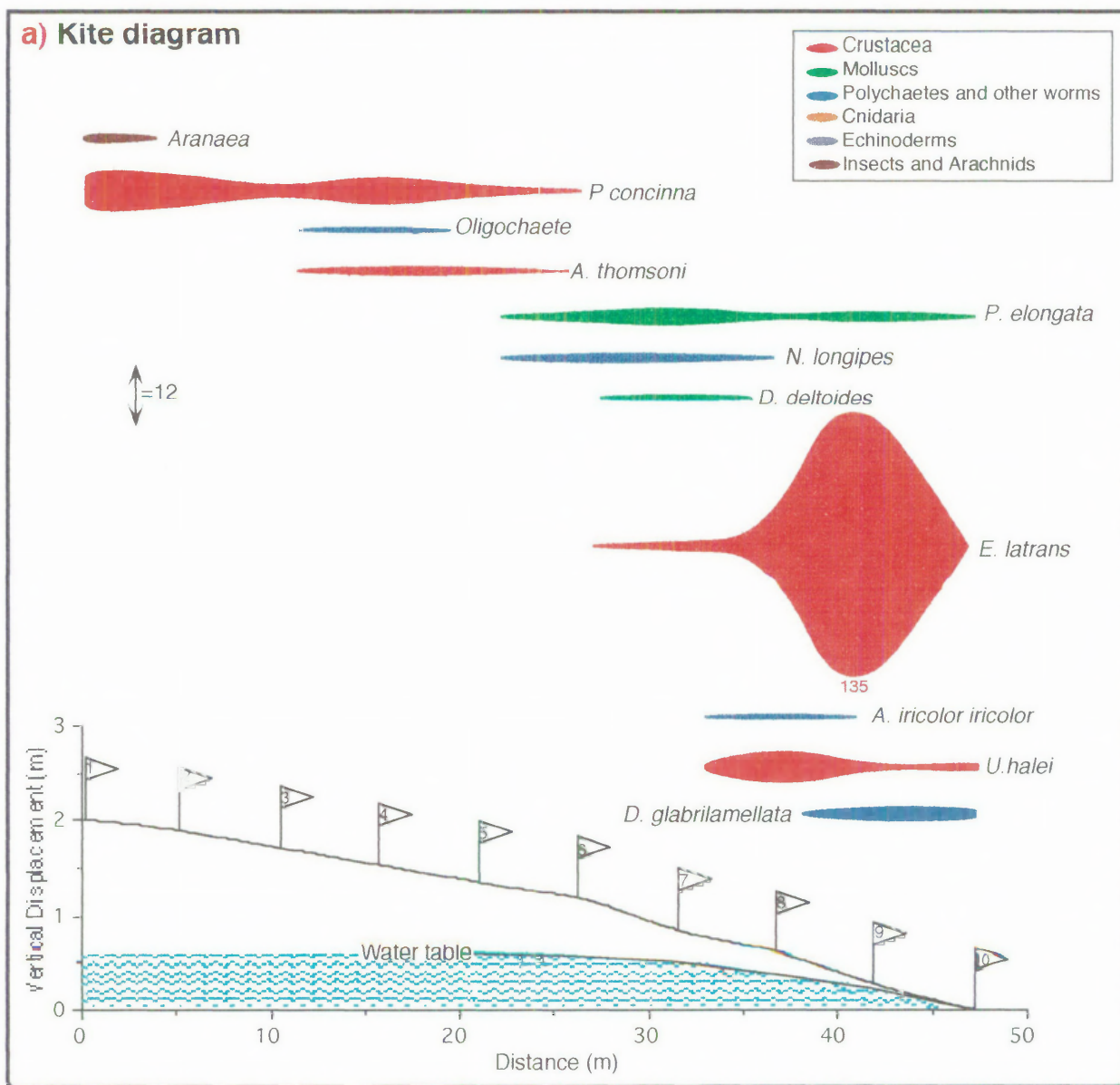
(continued next page.....)

**Figure 12.9:** (continued)..**Waitpinga beach macrofaunal distribution (Cool Temperate)****b) Community: Untransformed data dendrogram and MDS****c) Community: Presence/absence data dendrogram and MDS****d) Crustacea: Fourth root transformed data dendrogram and MDS**

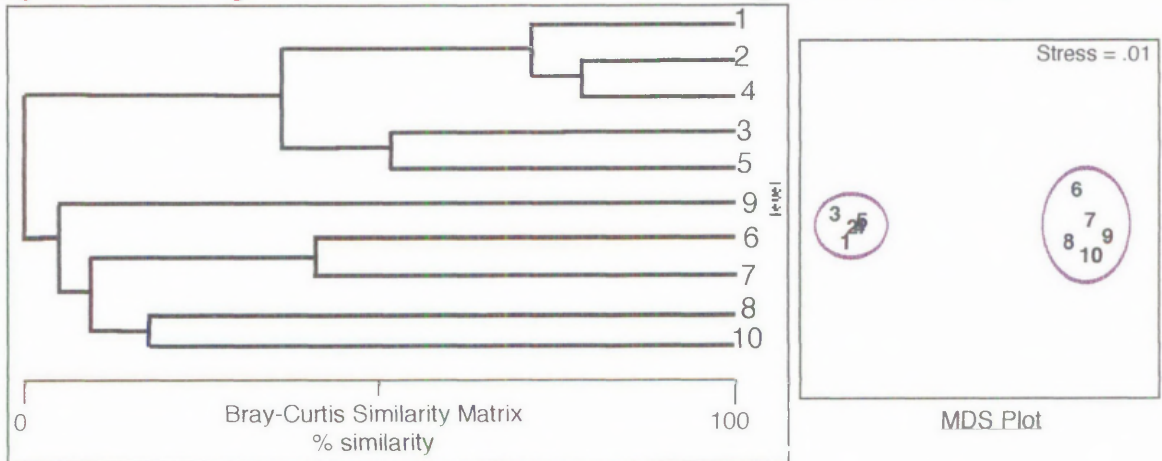
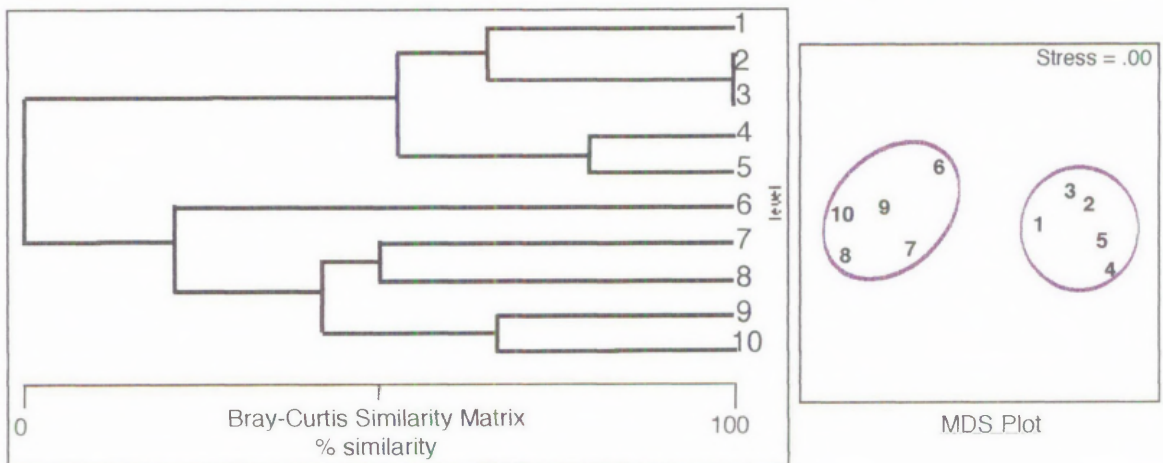
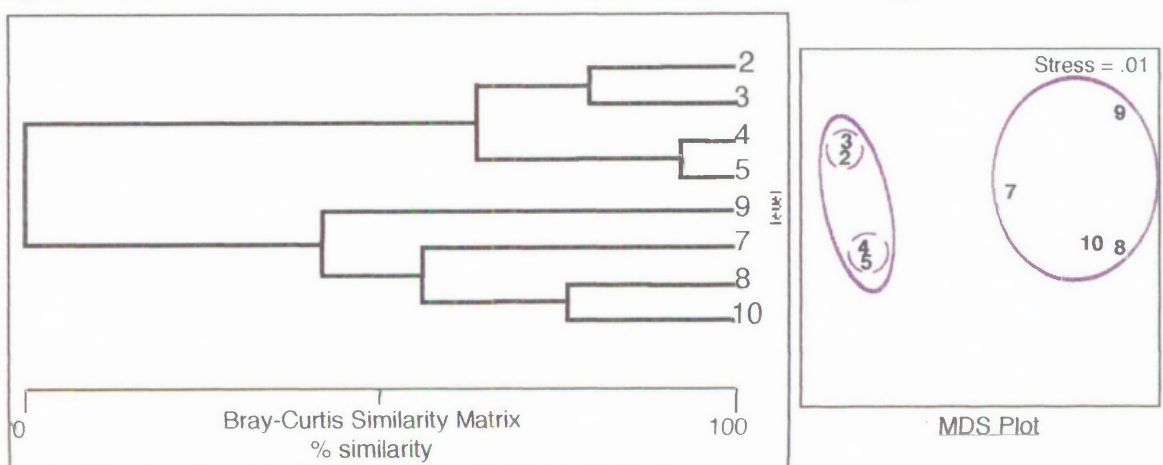
**Figure 12.10:**

**Longbeach macrofaunal distribution (Cool Temperate)**

[At low tide: 4th January, 1995]

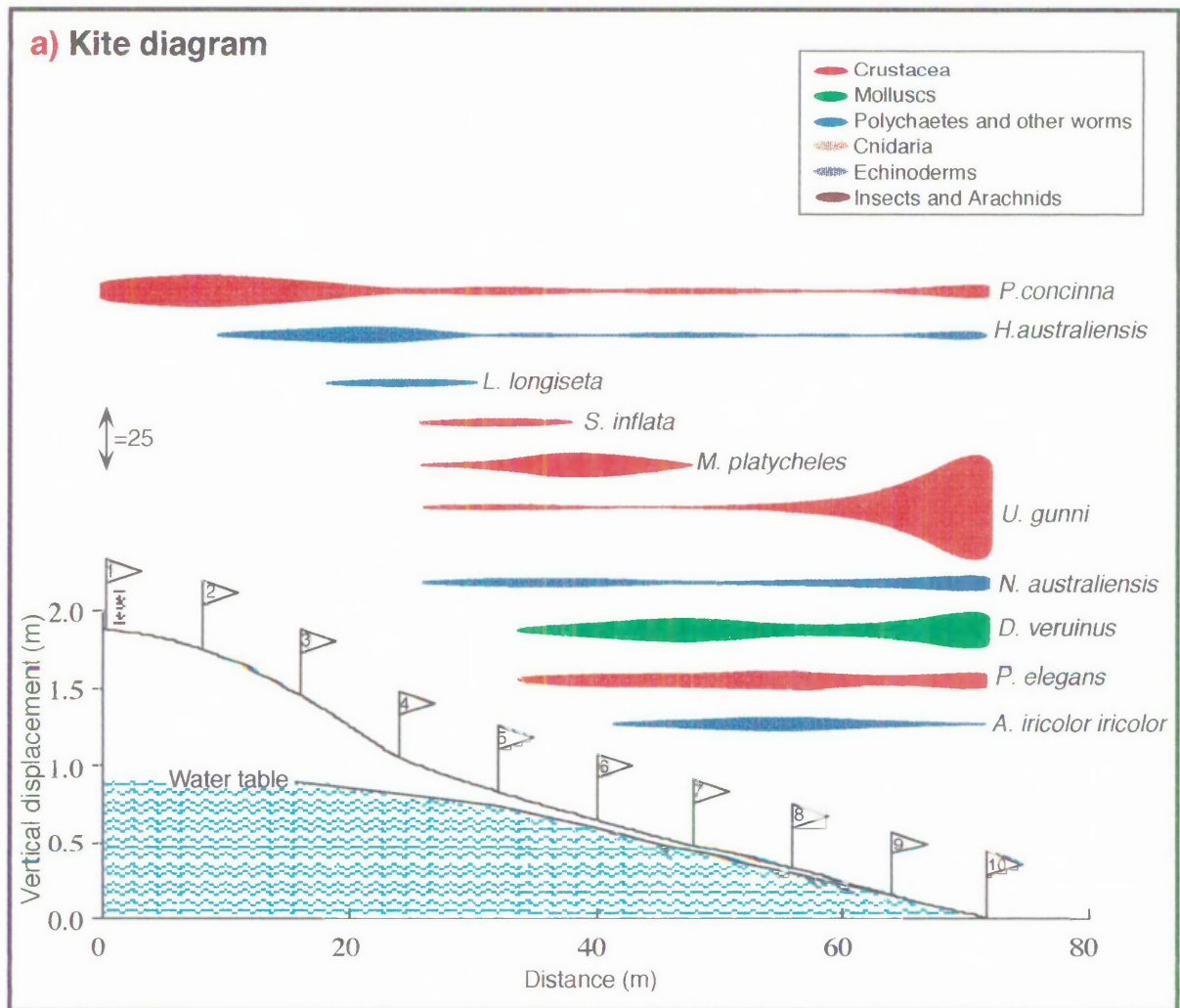


(continued next page.....)

**Figure 12.10:** (continued)..**Longbeach macrofaunal distribution (Cool Temperate)****b) Community: Untransformed data dendrogram and MDS****c) Community: Presence/absence data dendrogram and MDS****d) Crustacea: Fourth root transformed data dendrogram and MDS**

**Figure 12.11:****North Corindi beach macrofaunal distribution (Warm Temperate)**

[At low tide: 9th January, 1994]



(continued next page....)