

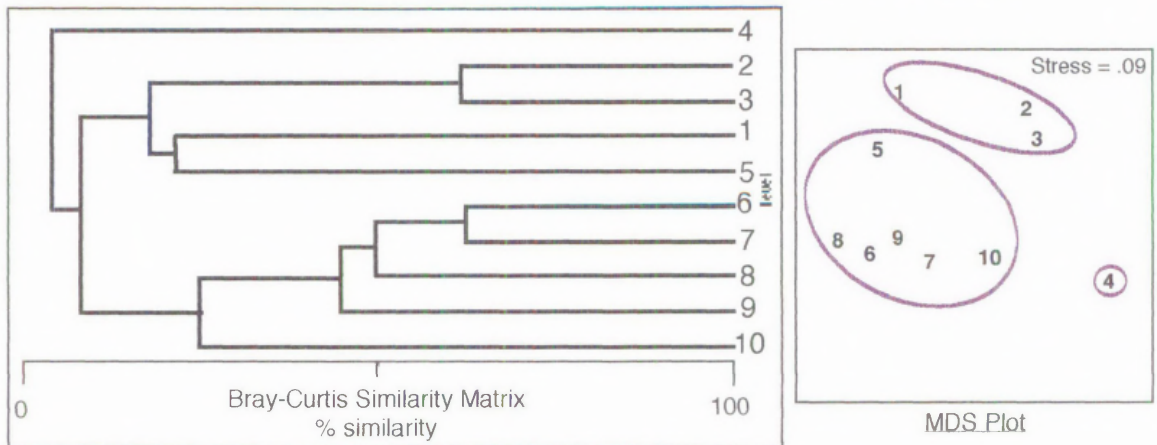
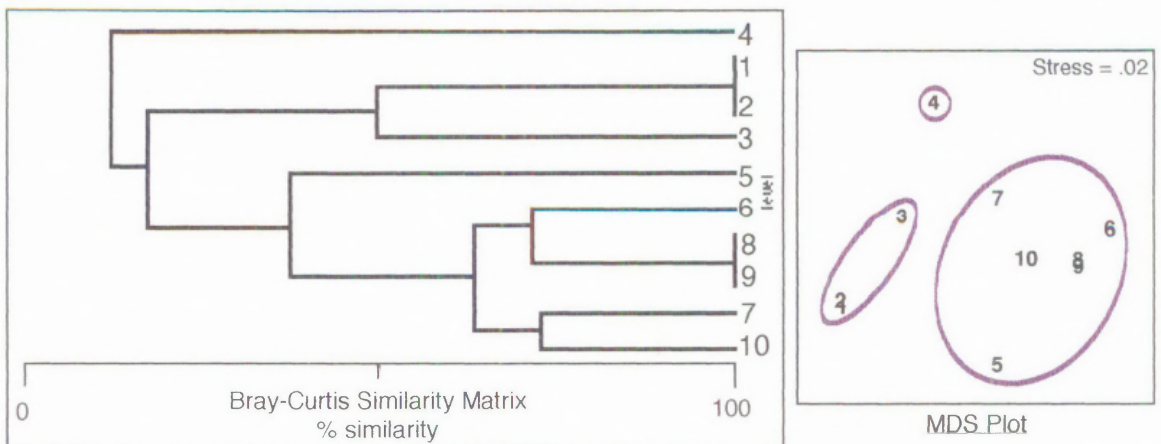
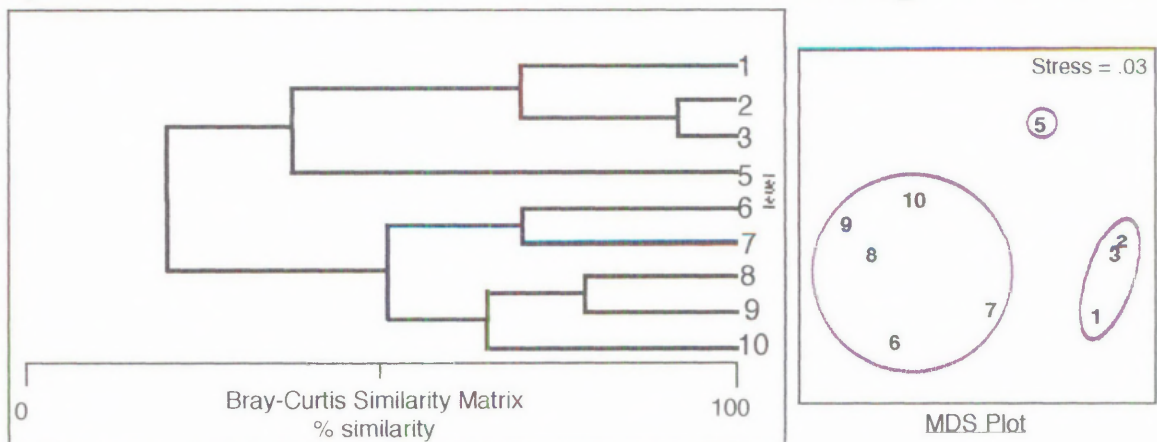
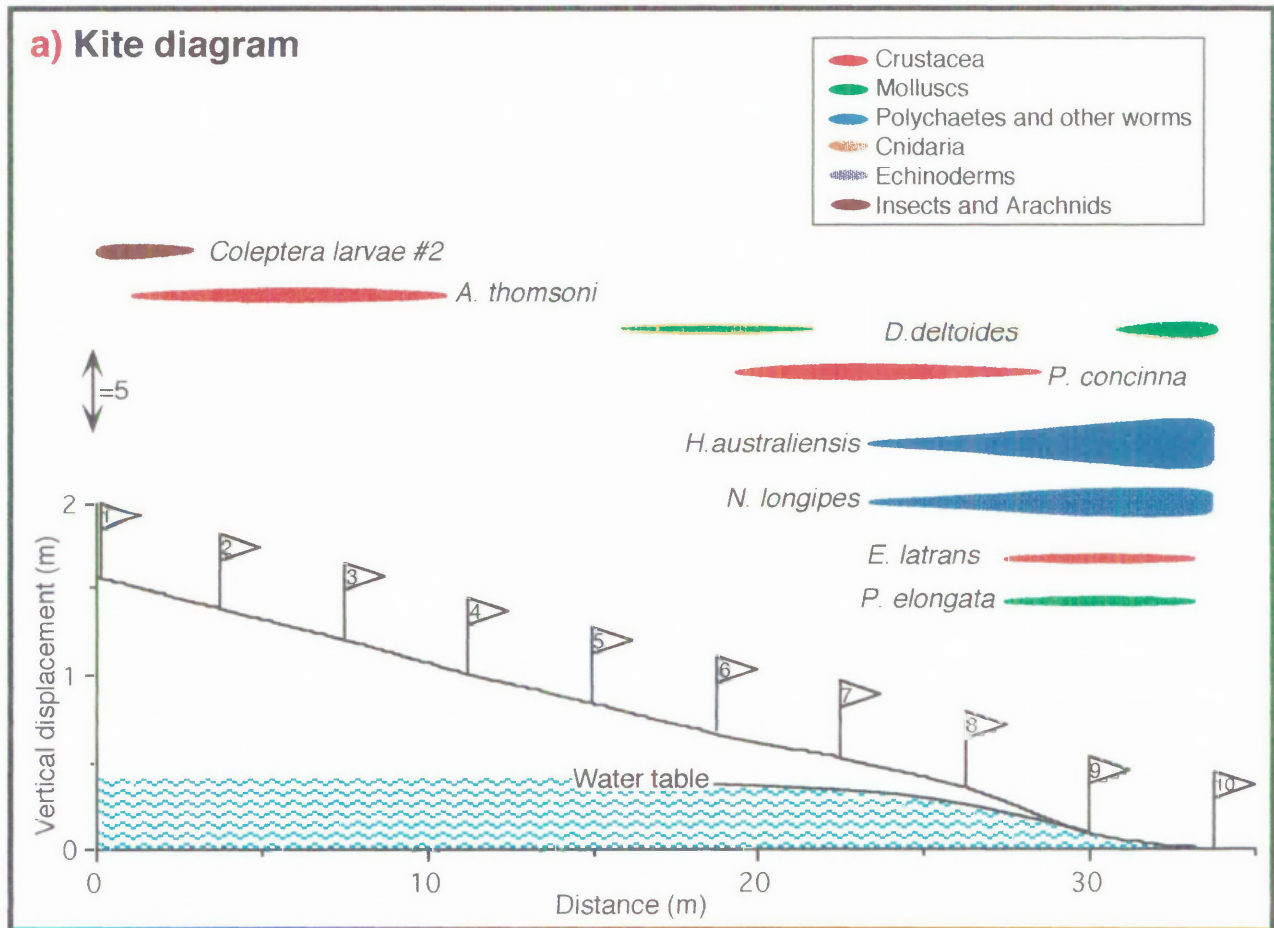
Figure 12.11 (continued)..**North Corindi beach macrofaunal distribution** (Warm Temperate)**b) Community: Untransformed data dendrogram and MDS****c) Community: Presence/absence data dendrogram and MDS****d) Crustacea: Fourth root transformed data dendrogram and MDS**

Figure 12.12:**Goolwa beach macrofaunal distribution (Cool Temperate)**

[At low tide: 29th December, 1994]



(continued next page.....)

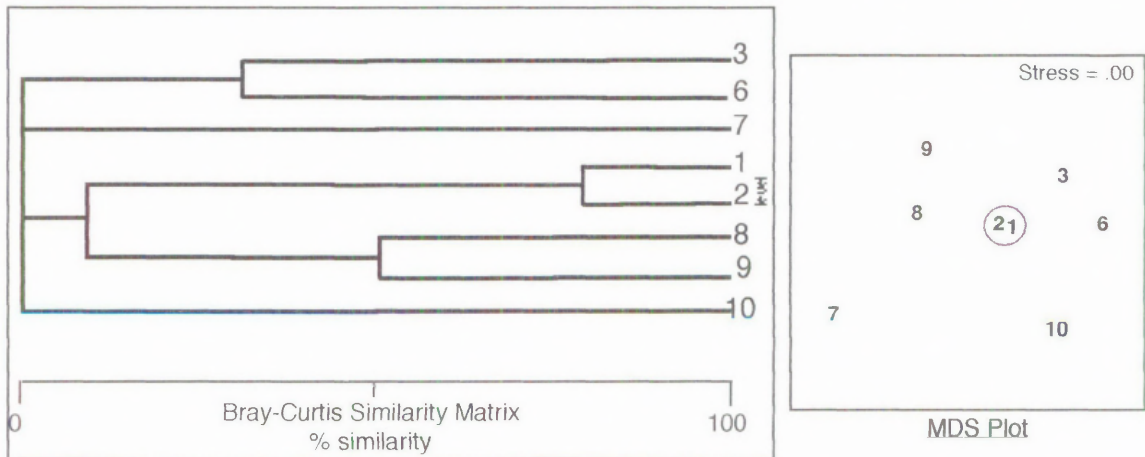
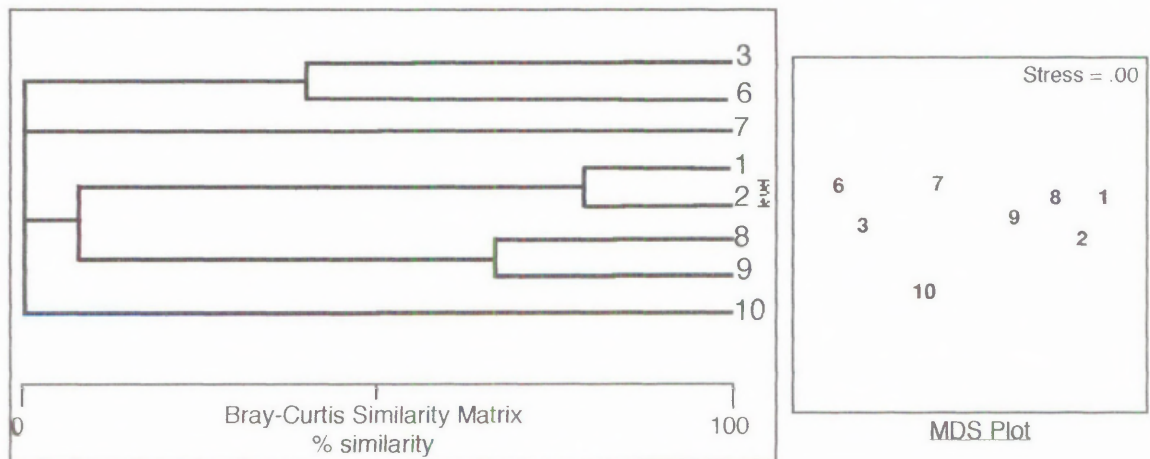
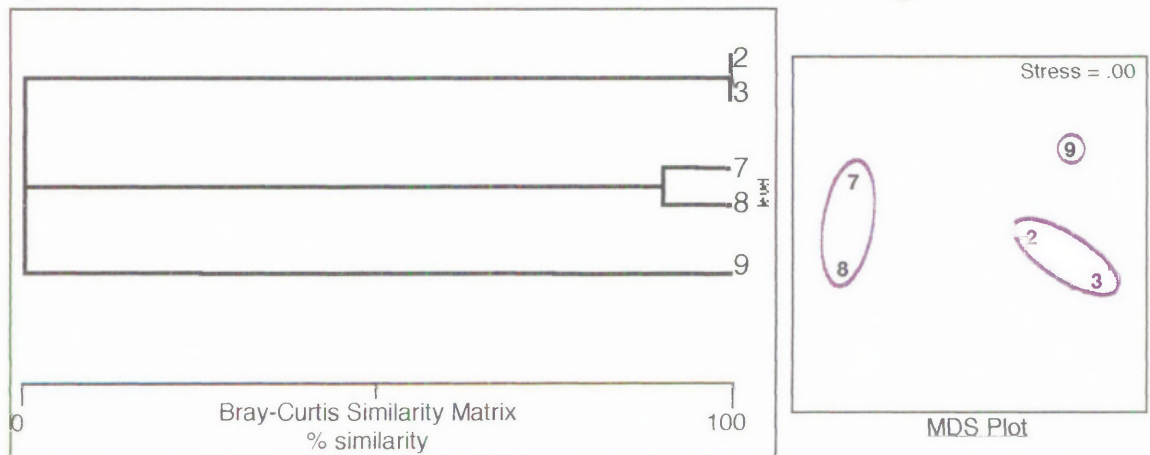
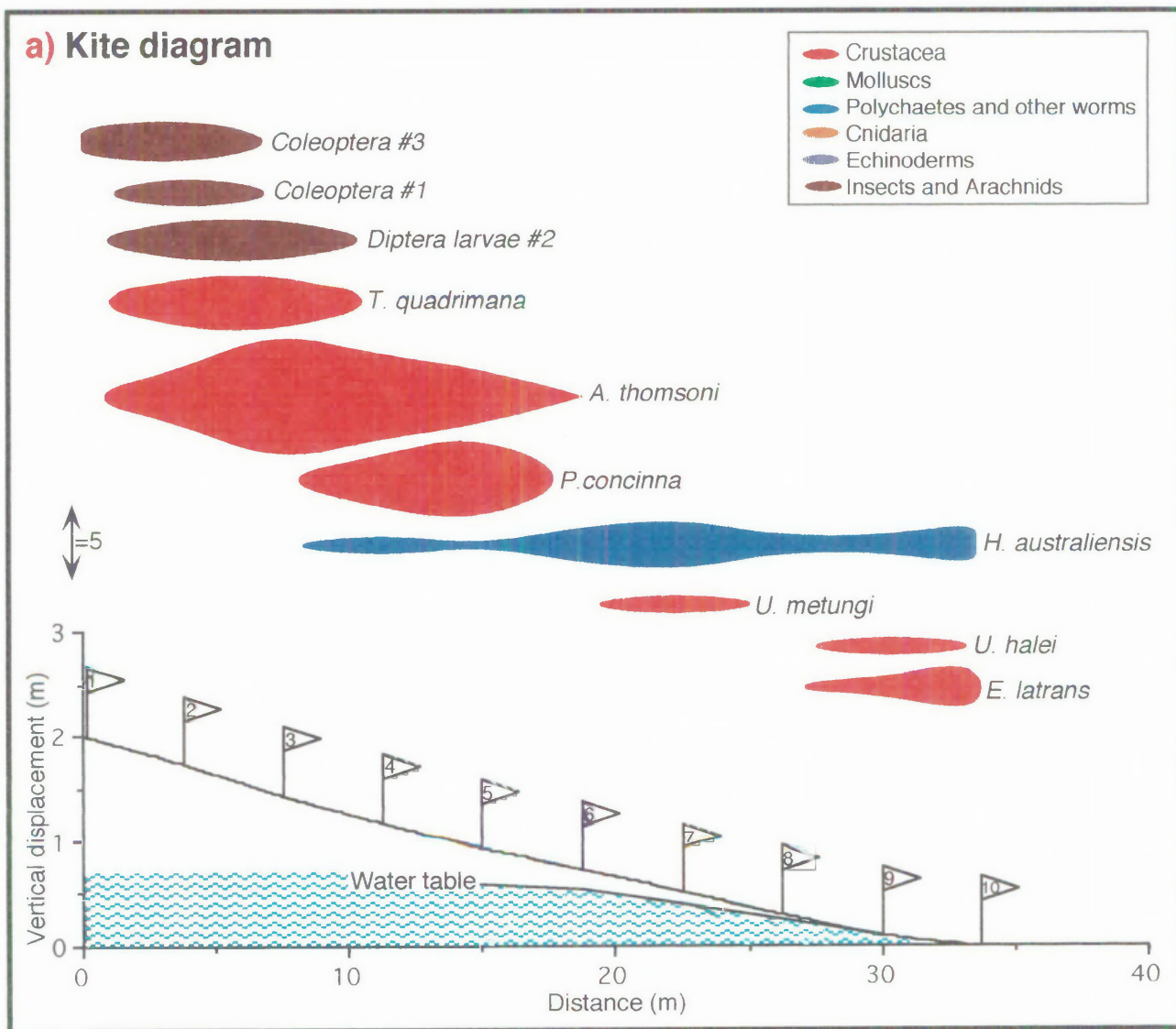
Figure 12.12(continued)..**Goolwa beach macrofaunal distribution (Cool Temperate)****b) Community: Untransformed data dendrogram and MDS****c) Community: Presence/absence data dendrogram and MDS****d) Crustacea: Fourth root transformed data dendrogram and MDS**

Figure 12.13:

Parsons beach macrofaunal distribution (Cool Temperate)

[At low tide: 1st January, 1995]



(continued next page.....)

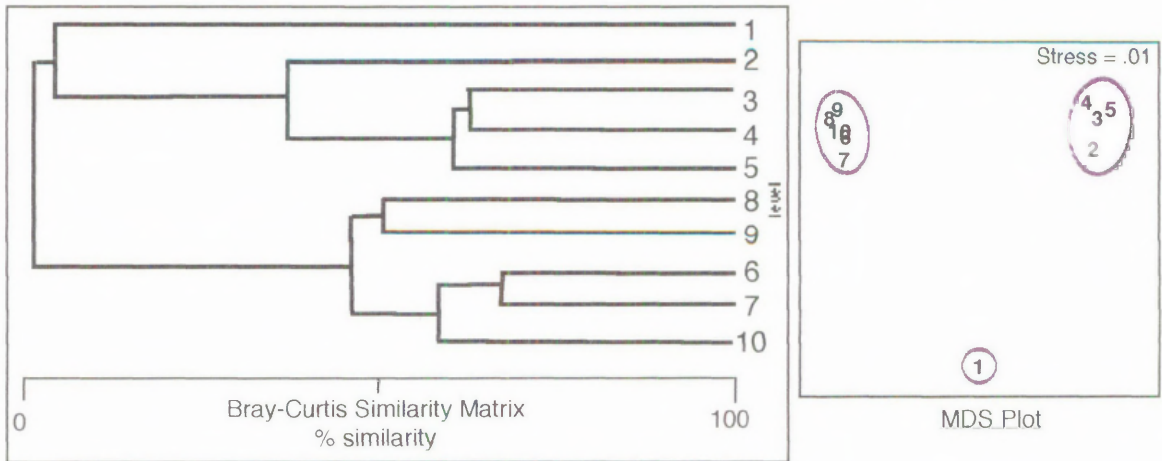
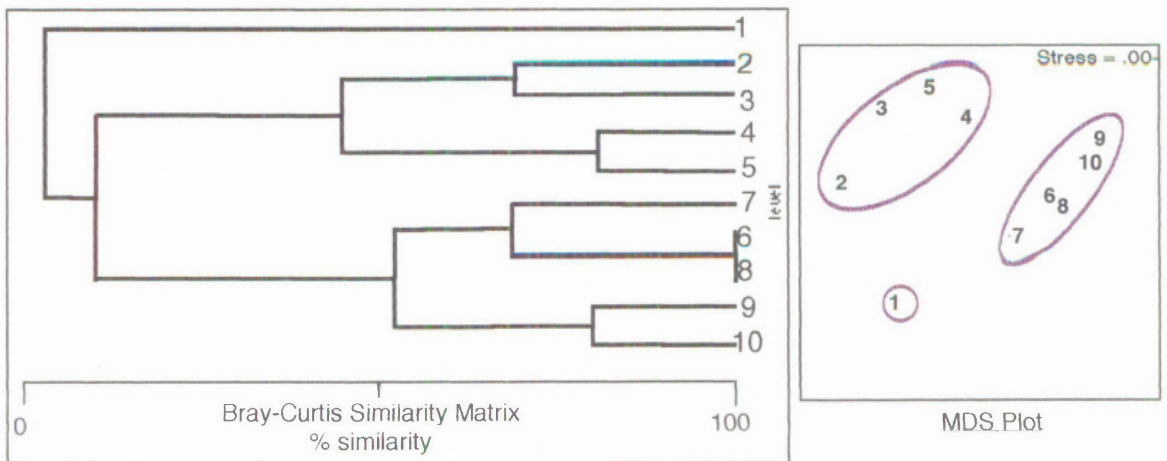
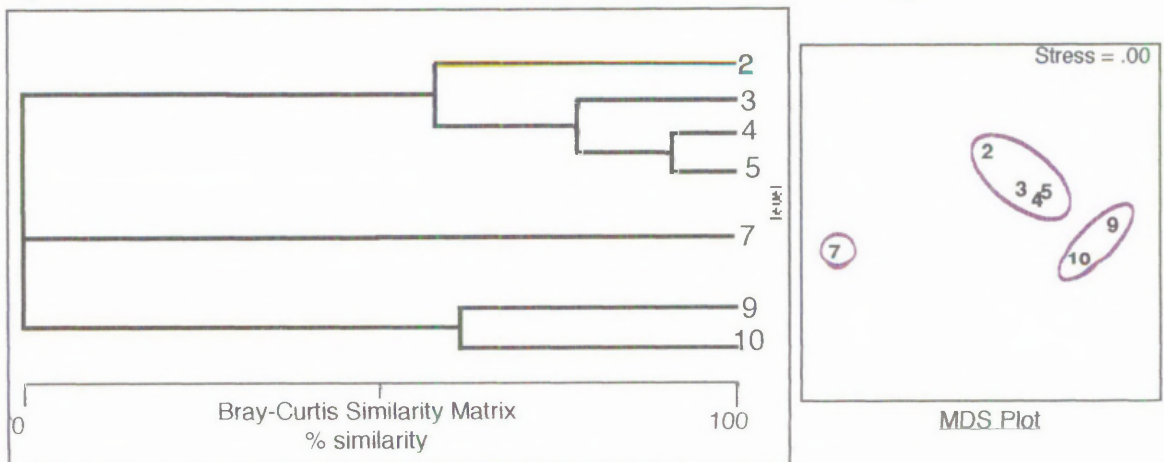
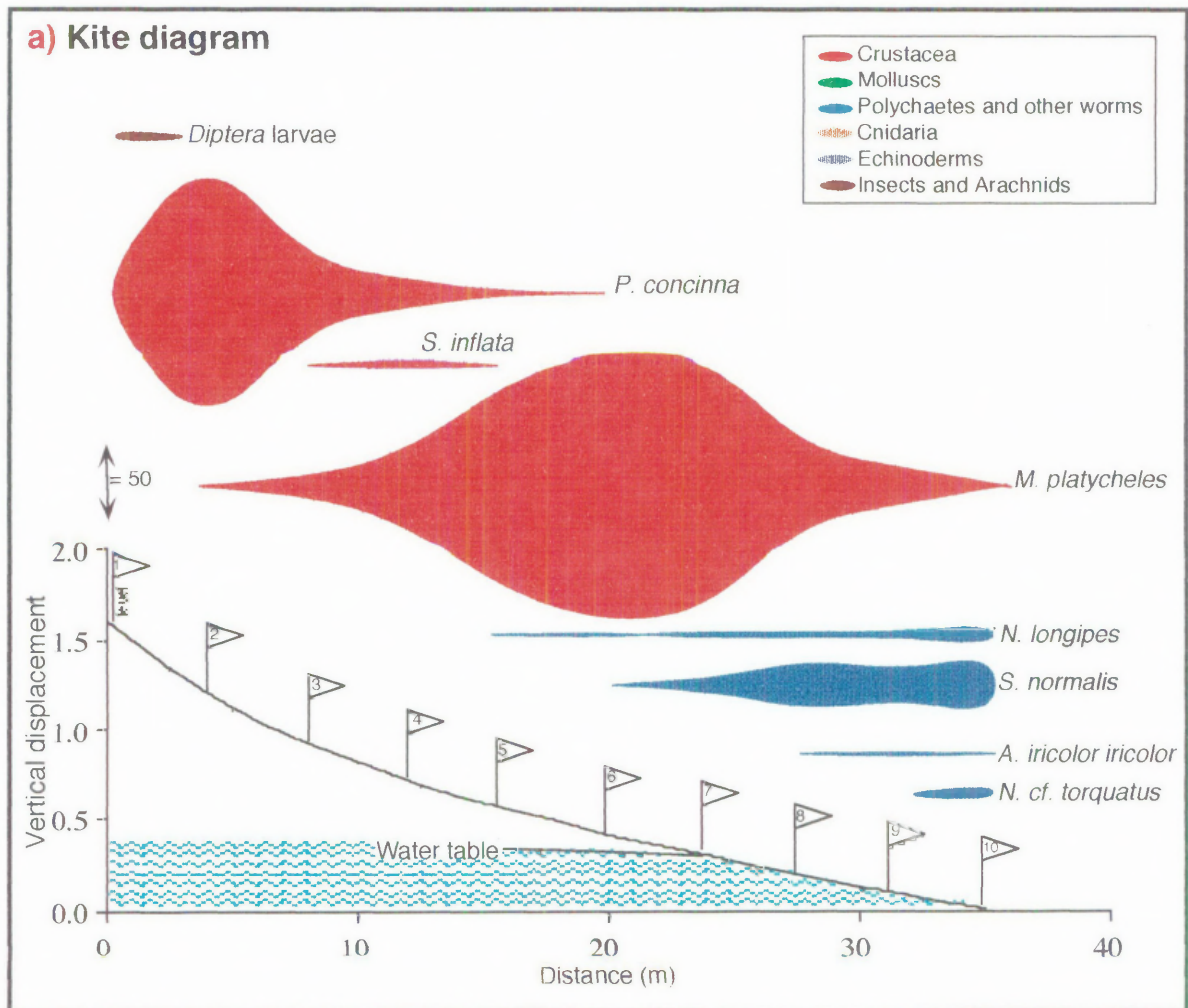
Figure 12.13: (continued).**Parsons beach macrofaunal distribution (Cool Temperate)****b) Community: Untransformed data dendrogram and MDS****c) Community: Presence/absence data dendrogram and MDS****d) Crustacea: Fourth root transformed data dendrogram and MDS**

Figure 12.14:**Arrawarra beach macrofaunal distribution (Warm Temperate)**

[At low tide: 7th January, 1994]

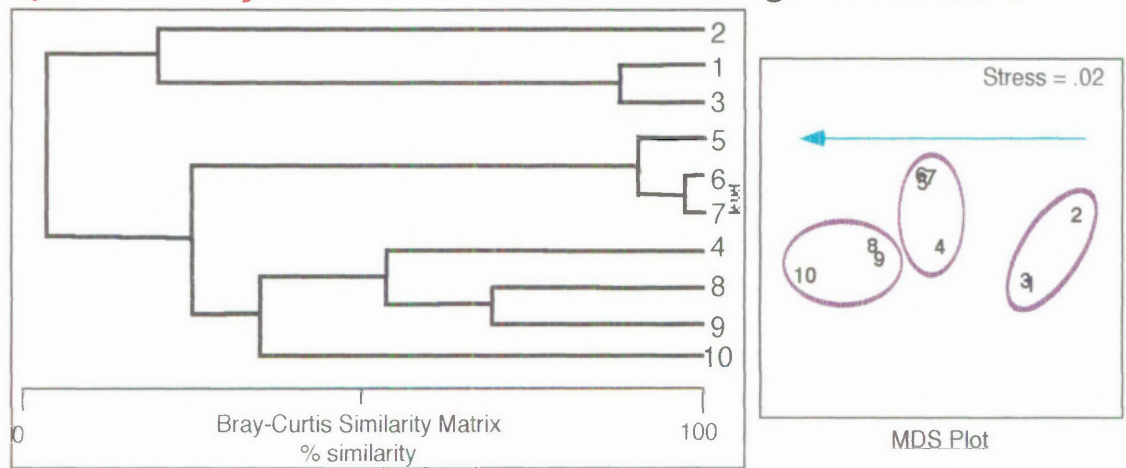


(continued next page.....)

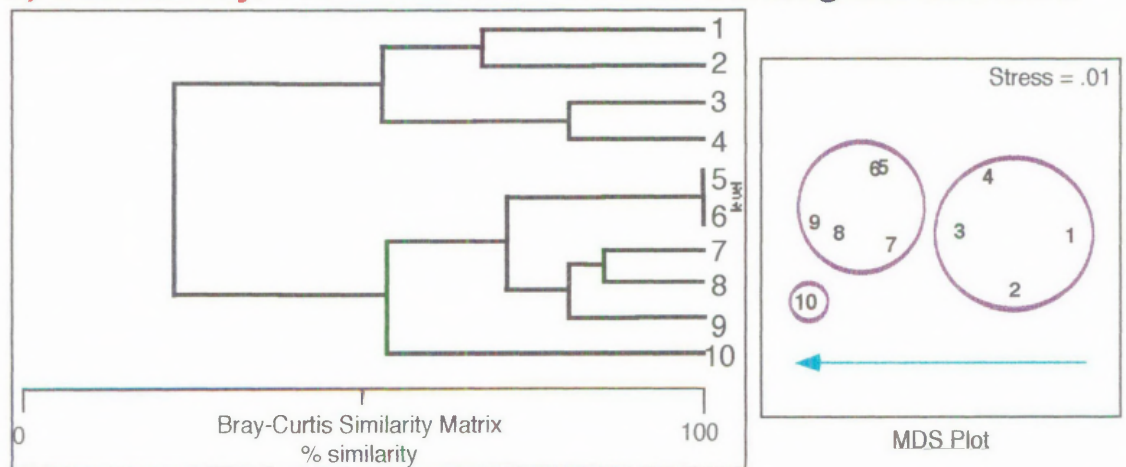
Figure 12.14 (continued)..

Arwarra beach macrofaunal distribution (Warm Temperate)

b) Community: Untransformed data dendrogram and MDS



c) Community: Presence/absence data dendrogram and MDS



c) Crustacea: Fourth root transformed data dendrogram and MDS

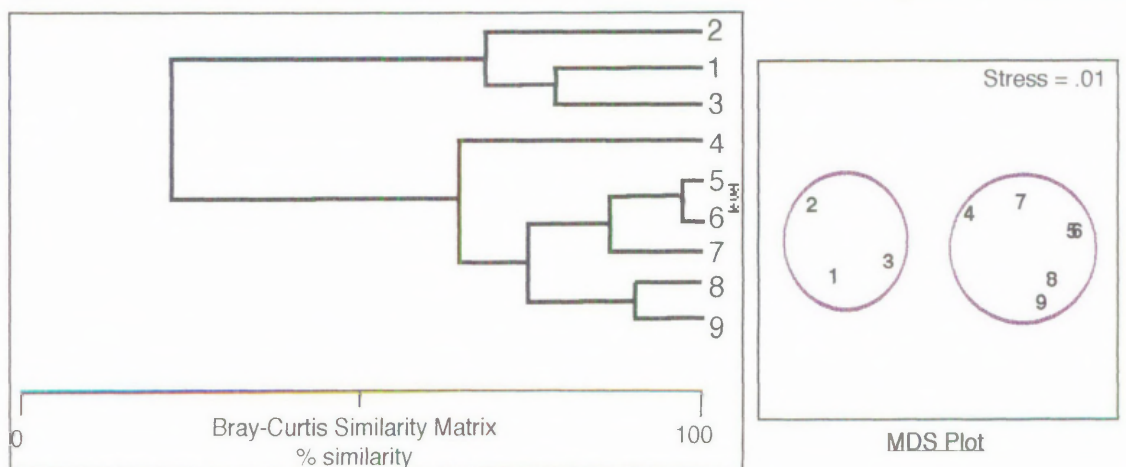
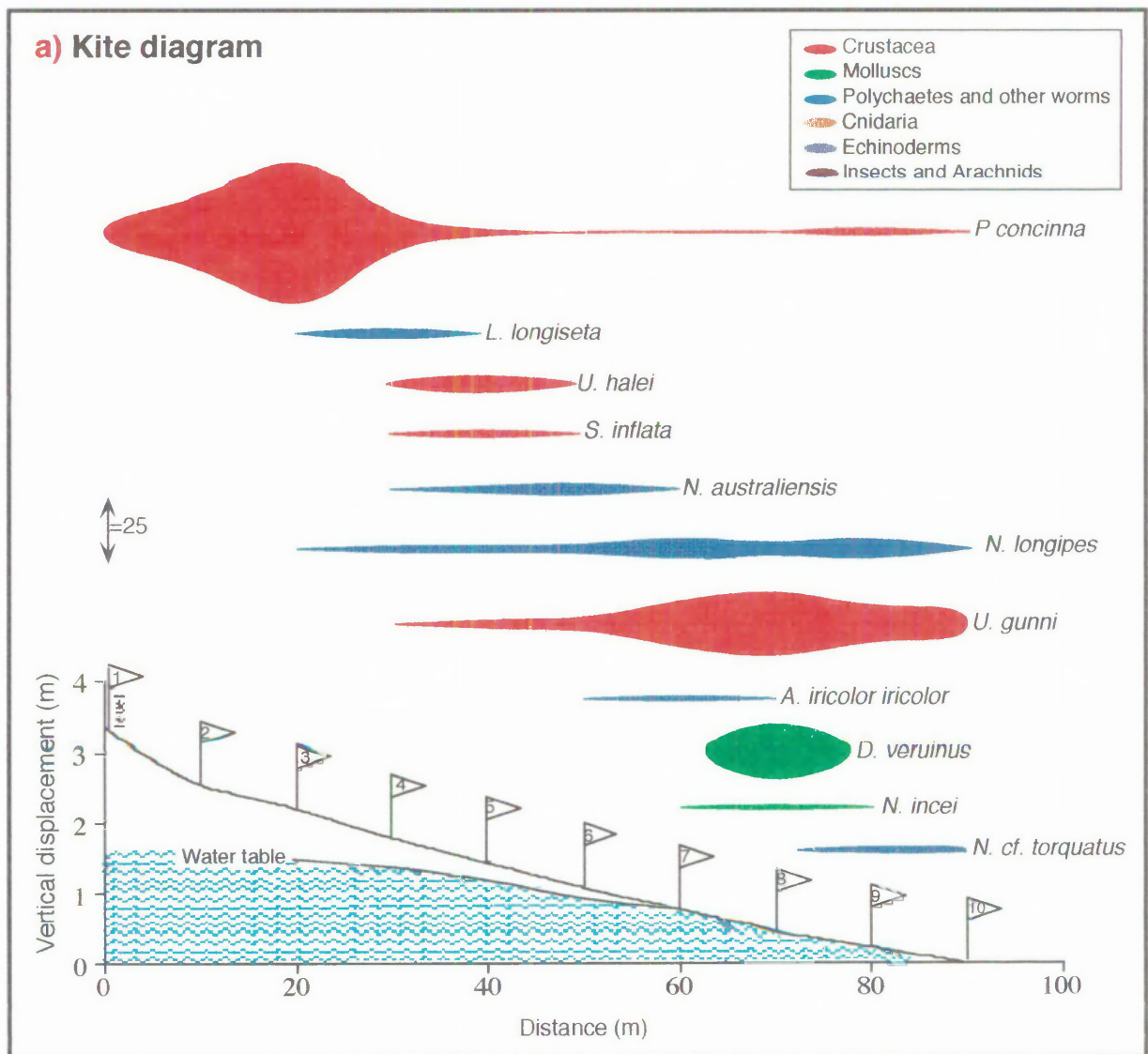


Figure 12.15:**Shelley beach macrofaunal distribution (Warm Temperate)**

[At low tide: 11th January, 1994]



(continued next page.....)

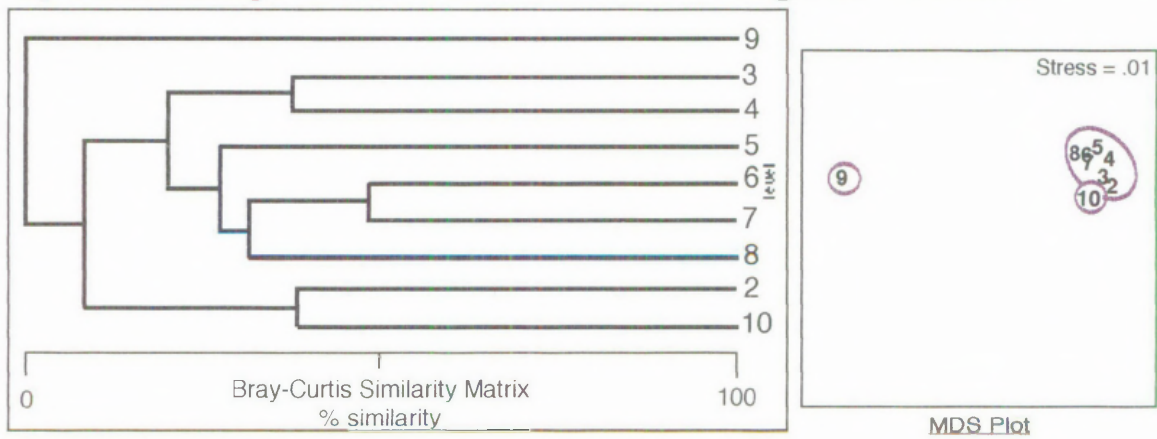
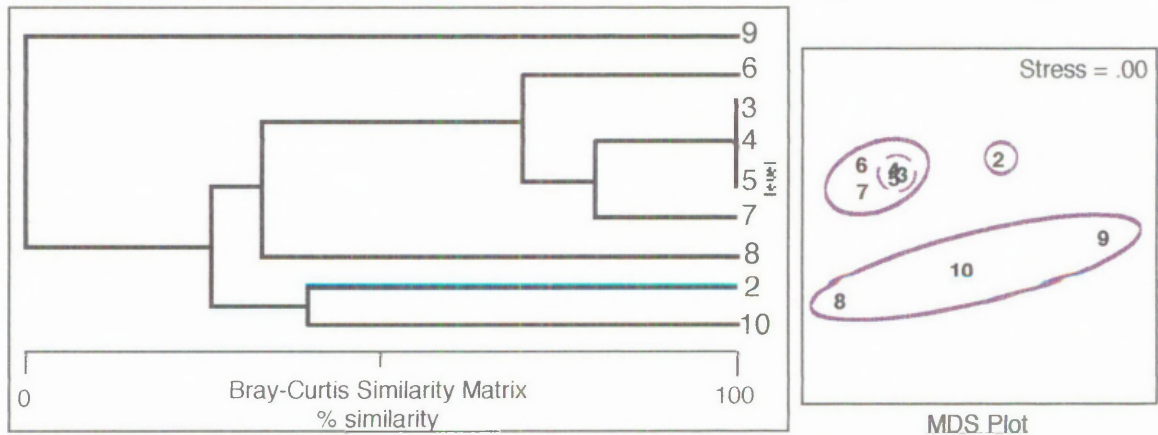
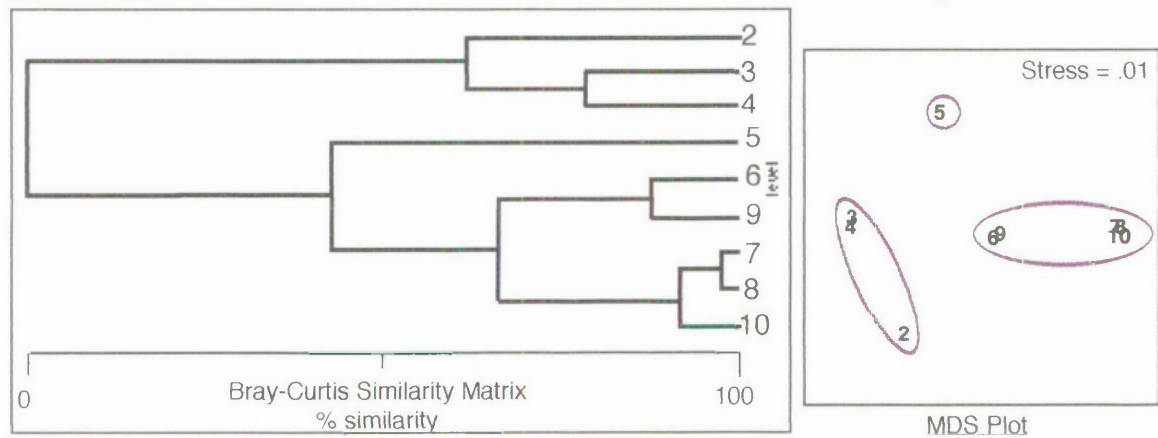
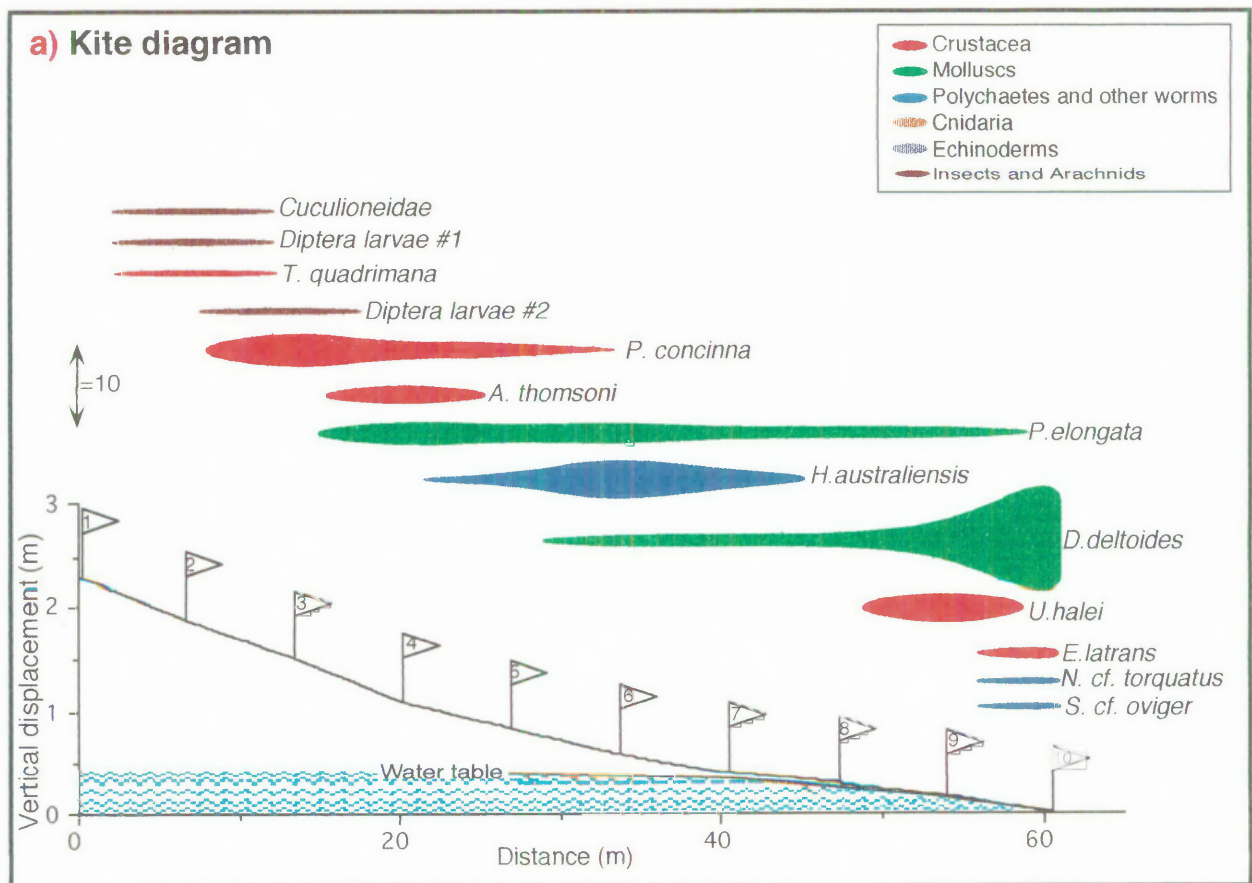
Figure 12.15 (continued)..**Shelley beach macrofaunal distribution (Warm Temperate)****b) Community: Untransformed data dendrogram and MDS****c) Community: Presence/absence data dendrogram and MDS****d) Crustacea: Fourth root transformation data dendrogram and MDS**

Figure 12.16:
Coorong beach macrofaunal distribution (Cool Temperate)
 [At low tide: 5th January, 1995]



(continued next page.....)

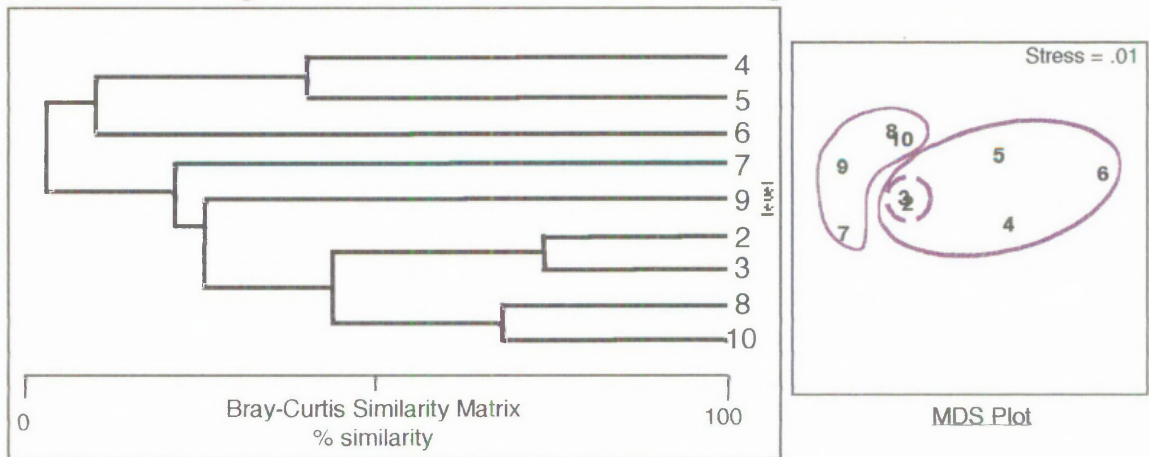
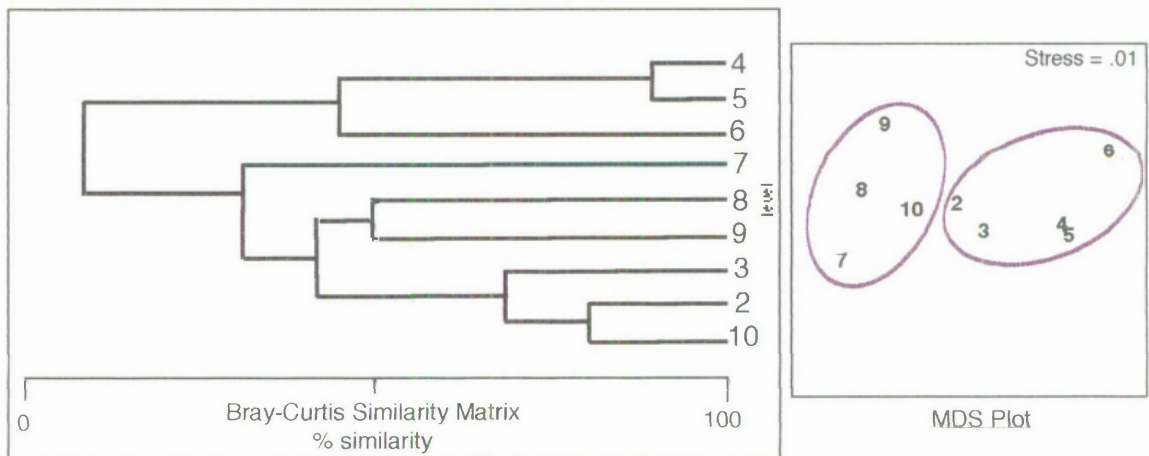
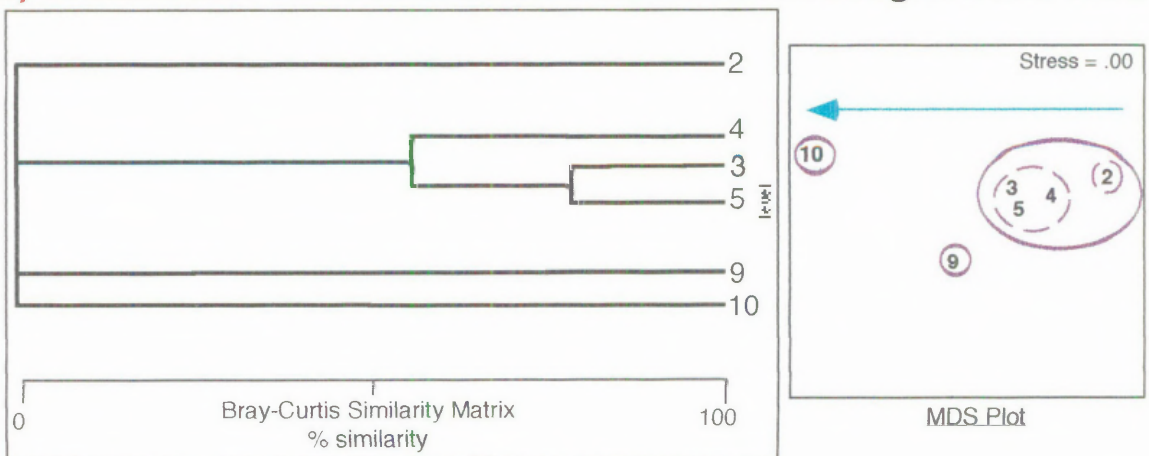
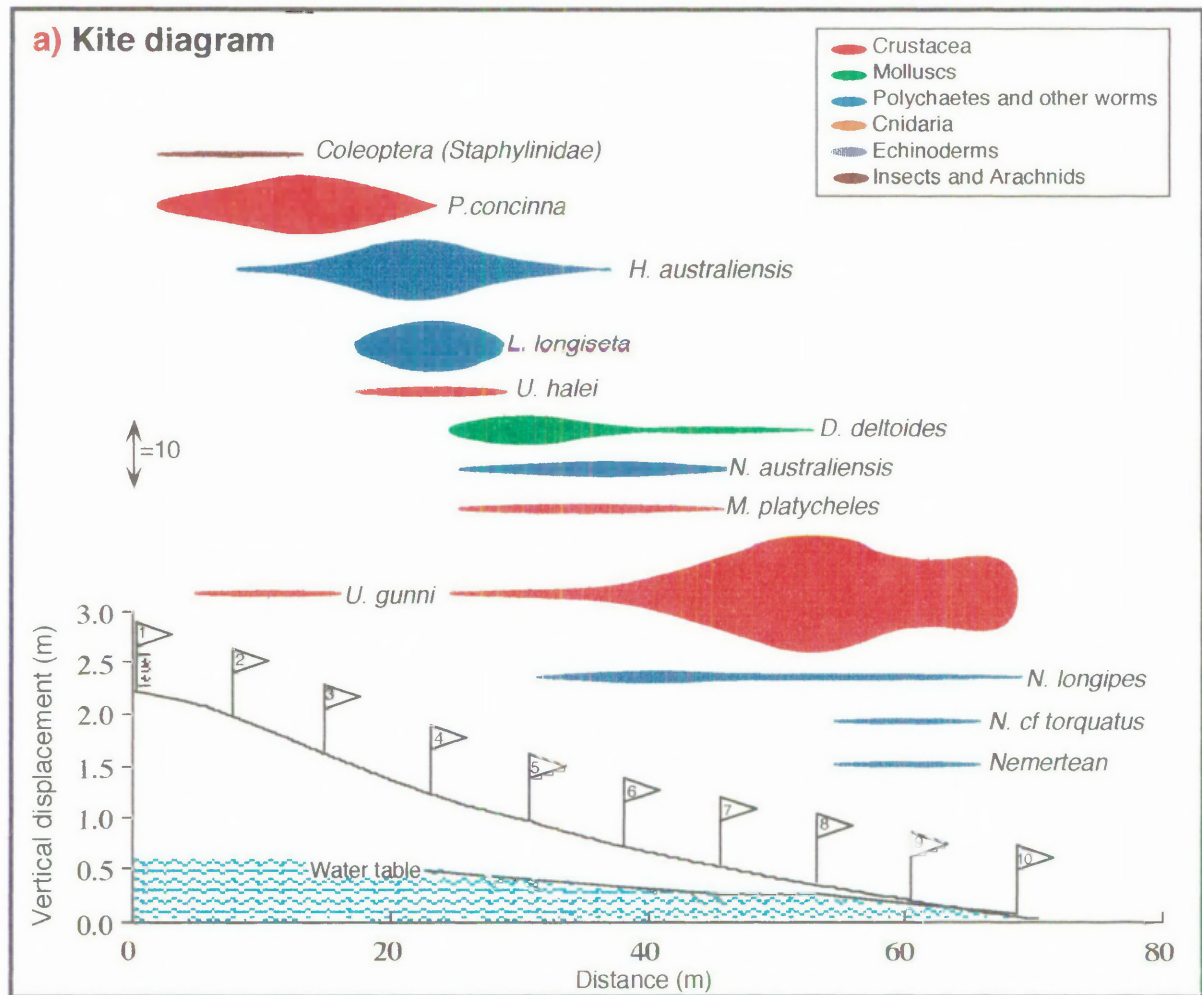
Figure 12.16: (continued)..**Coorong beach macrofaunal distribution (Cool Temperate)****b) Community: Untransformed data dendrogram and MDS****c) Community: Presence/absence data dendrogram and MDS****d) Crustacea: Fourth root transformed data dendrogram and MDS**

Figure 12.17:
Ocean View beach macrofaunal distribution (Warm Temperate)
 [At low tide: 5th January, 1994]



(continued next page.....)

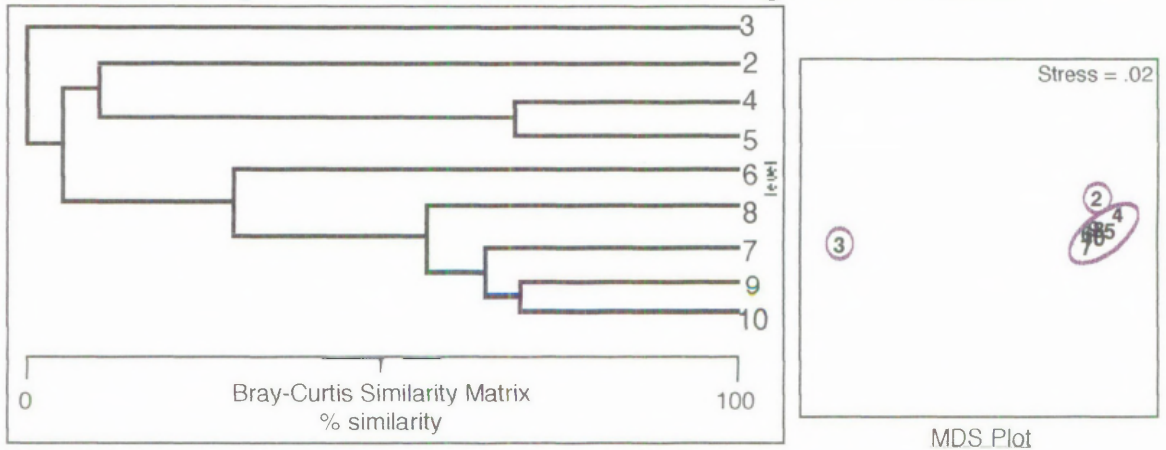
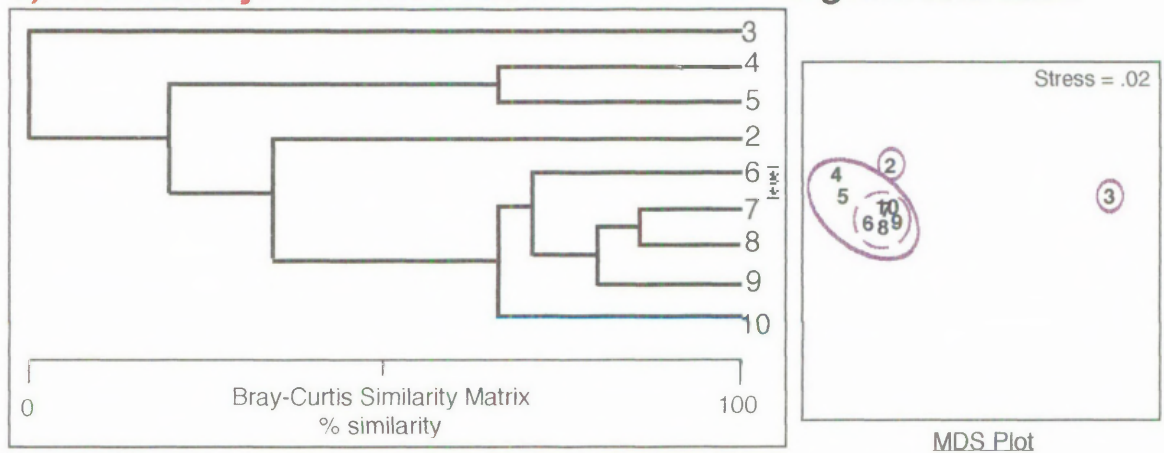
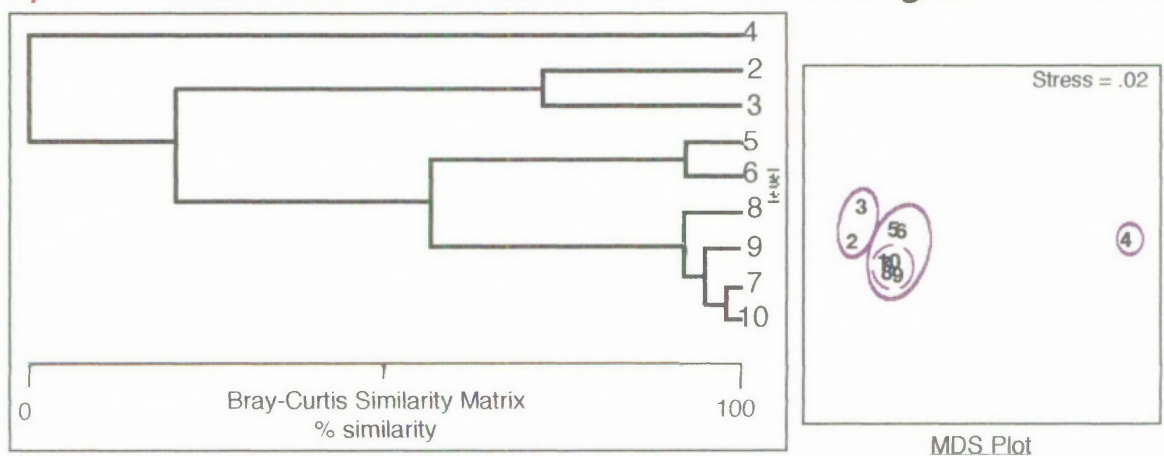
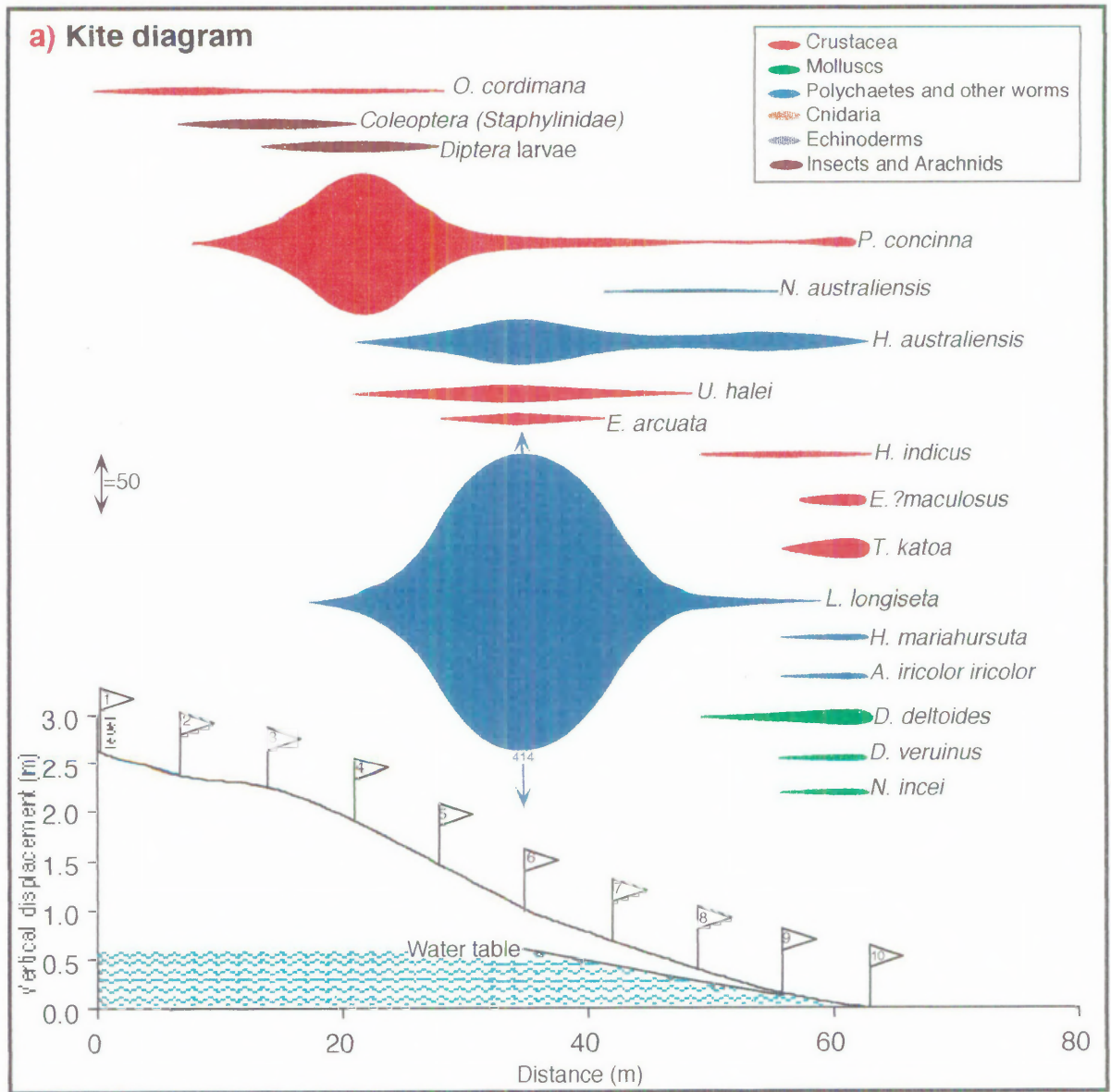
Figure 12.17 (continued)..**Ocean View beach macrofaunal distribution (Warm Temperate)****b) Community: Untransformed data dendrogram and MDS****c) Community: Presence/absence data dendrogram and MDS****d) Crustacea: Fourth root transformed data dendrogram and MDS**

Figure 12.18:

Cabarita beach macrofaunal distribution (Warm Temperate)

[At low tide: 15th January, 1994]

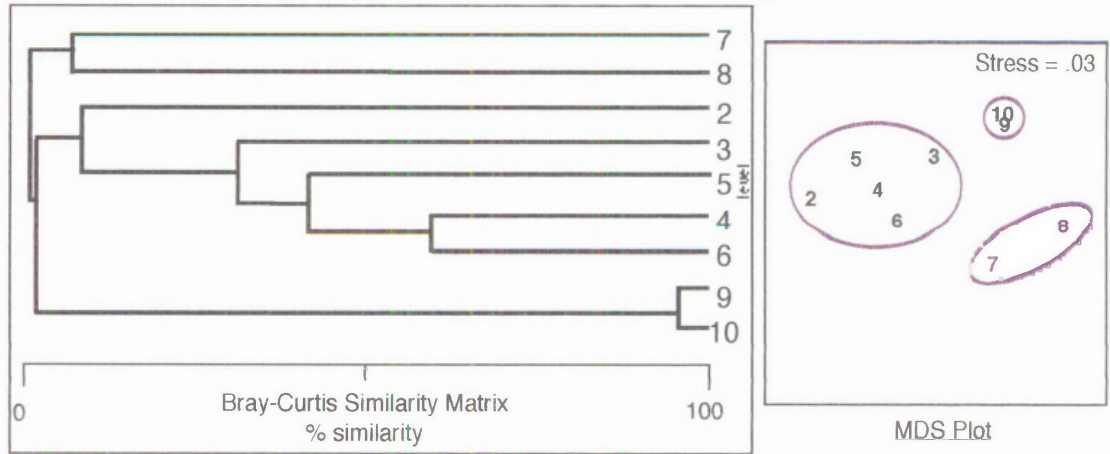


(continued next page.....)

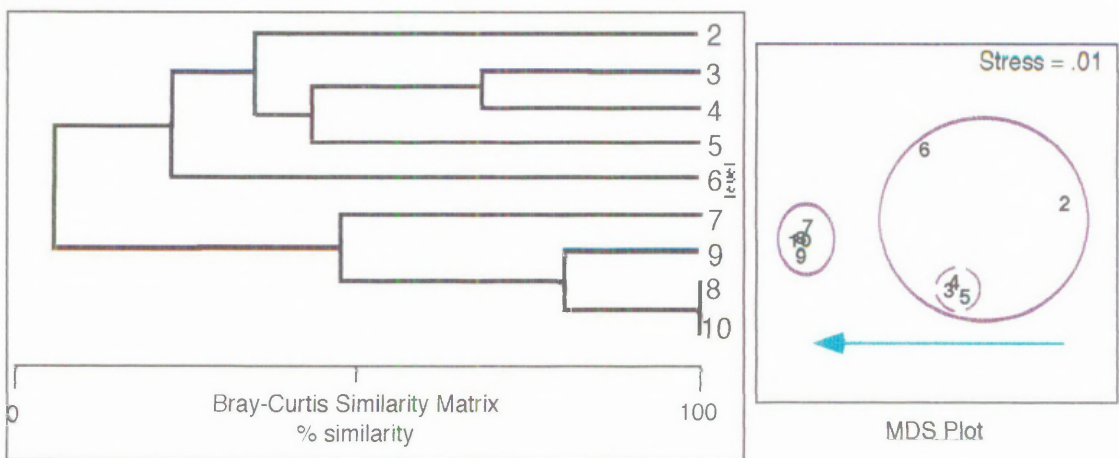
Figure 12.18 (continued)..

Cabarita beach macrofaunal distribution (Warm Temperate)

b) Community: Untransformed data dendrogram and MDS



c) Community: Presence/absence data dendrogram and MDS



d) Crustacea: Fourth root transformed data dendrogram and MDS

