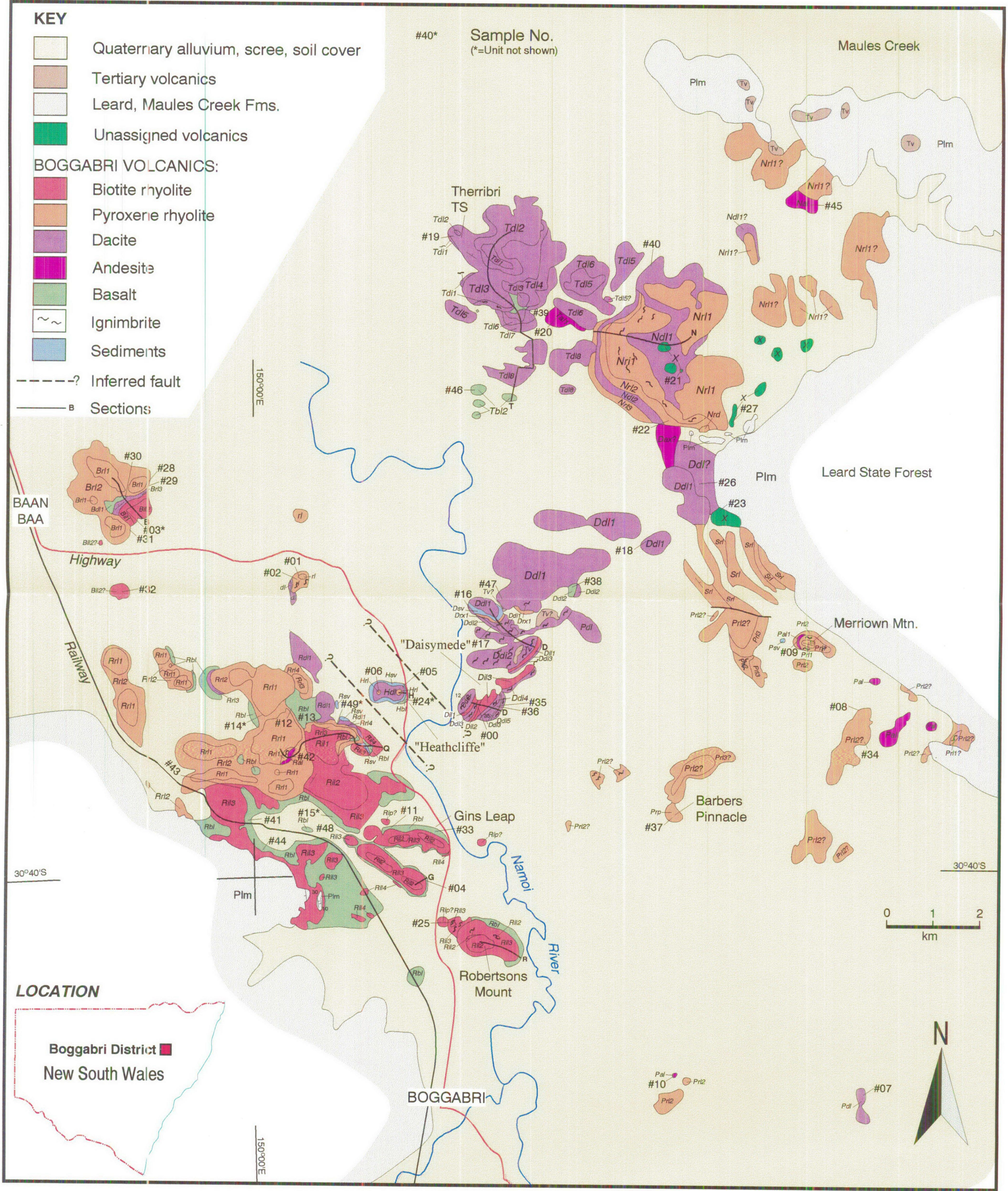


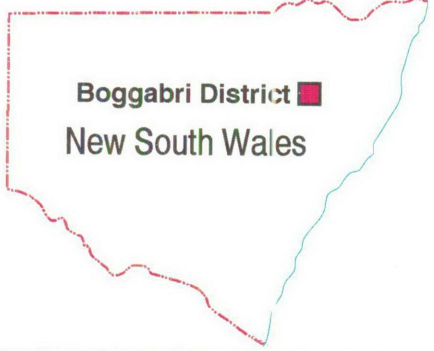
KEY

- Quaternary alluvium, scree, soil cover
 - Tertiary volcanics
 - Leard, Maules Creek Fms.
 - Unassigned volcanics
- BOGGABRI VOLCANICS:**
- Biotite rhyolite
 - Pyroxene rhyolite
 - Dacite
 - Andesite
 - Basalt
 - Ignimbrite
 - Sediments
- Inferred fault
 - Sections

#40* Sample No.
(*=Unit not shown)



LOCATION



Boggabri District ■
New South Wales

